

# AB 617 Community Air Monitoring

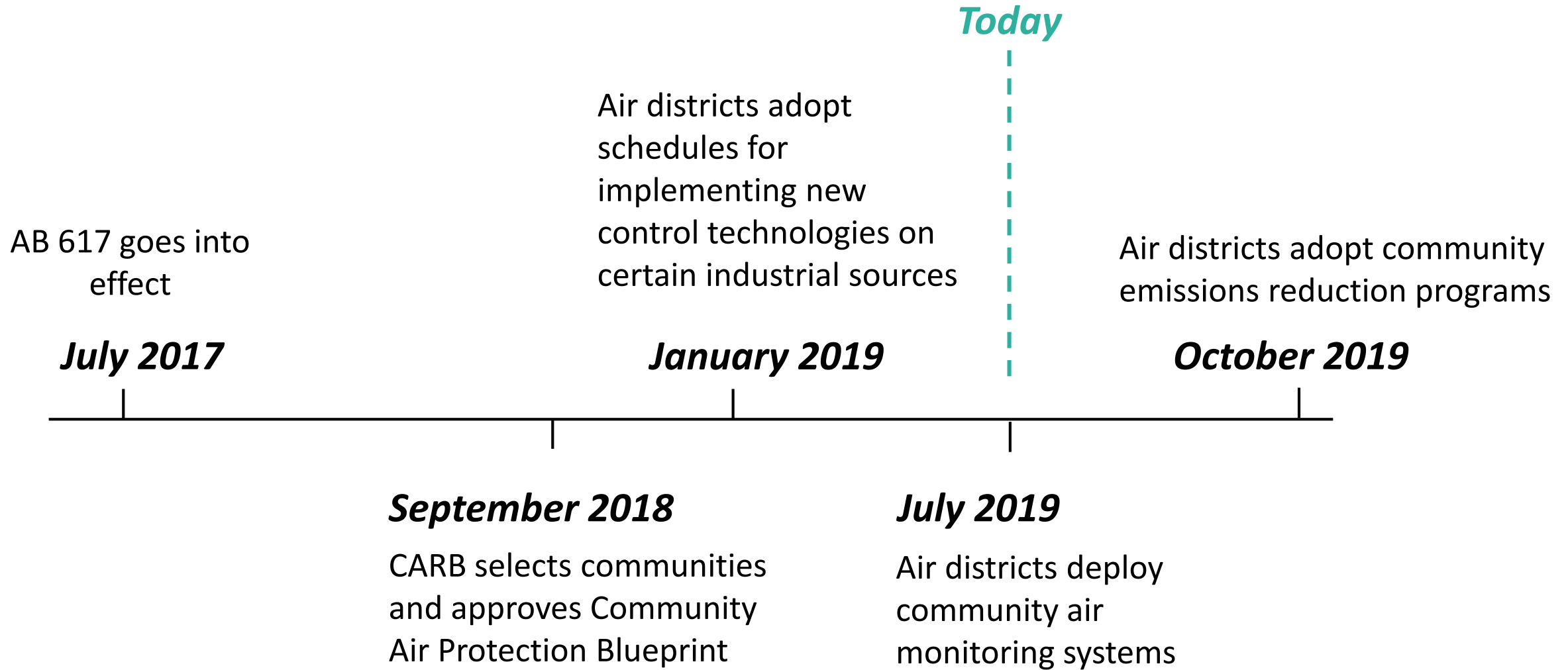
California Air Resources Board  
Monitoring and Laboratory Division

Jeremy Smith  
[Jeremy.smith@arb.ca.gov](mailto:Jeremy.smith@arb.ca.gov)

*“The state board shall select, concurrent with the monitoring plan, in consultation with the districts and based on an assessment of the locations of sensitive receptors and disadvantaged communities, the highest priority locations around the state to deploy community air monitoring systems, which shall be communities with high exposure burdens for toxic air contaminants and criteria air pollutants.*

*By July 1, 2019, any district containing a location selected pursuant to this subdivision shall deploy a community air monitoring system in the selected location or locations.”*

# Year 1 Implementation Timeline



# First Year AB 617 Communities

- 10 communities selected
- All 10 communities except West Oakland **include air monitoring**



# What is CARB's Role?

- Statewide Air Monitoring Plan
- Online Resource Center
  - Review air monitoring technologies
  - Review current community air monitoring systems
  - Provide resources for community scientists



# Air Monitoring Planning: 14 Elements

## ***What is the reason for conducting air monitoring?***

- Form community partnerships
- State the community-specific purpose
- Identify scope of actions
- Define air monitoring objectives
- Establish roles and responsibilities

## ***How will monitoring be conducted?***

- Define data quality objectives
- Select monitoring methods and equipment
- Determine monitoring areas
- Develop quality control procedures
- Describe data management
- Provide work plan for conducting field measurements

## ***How will data be used to take action?***

- Specify process for evaluating effectiveness
- Analyze and interpret data
- Communicate results to support action

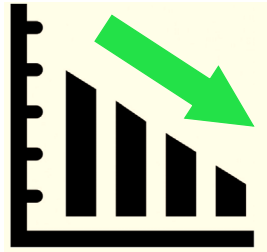
# Actionable Air Monitoring Data



*Inform personal choices, e.g. activity*



*Evaluate source impacts (source attribution)*



*Track progress of community emissions reduction programs*



*Support enforcement activities,  
new rules and regulations*

# What is CARB's Role?

- **Development**

- Statewide Air Monitoring Plan
- Online Resource Center

- **Implementation**

- Technical support
- Monitoring plan review
- Special monitoring studies
- Limited field and laboratory assistance

## FEATURED



Existing Community Monitoring Systems



Outline of Measurement Technologies



Community Science Resources



# What is the District's role?

- Action driven monitoring based on local concerns
- Focus on criteria and toxic air contaminants related to human health
- Major identified source concerns:

- **Ports**
- **Railyards**
- **Refineries**
- **Oil/Gas Extraction**
- **Trucks**
- **Agriculture**
  - **Ag Burning**
  - **Pesticides**



Reference  
Methods



Air Toxics



Mobile  
Platforms



Fenceline

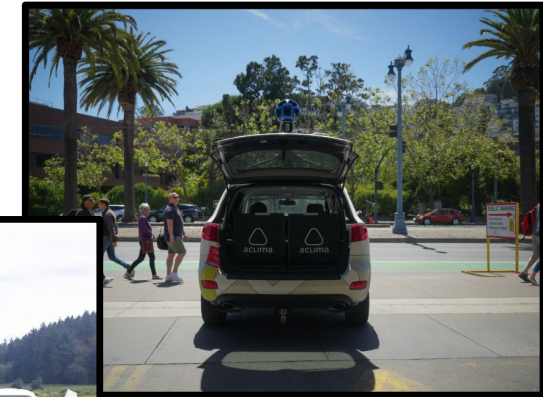


Remote  
Sensing



Air Sensors

# District Monitoring Approaches



# Questions Looking Forward

- Are there any relevant emerging toxic air contaminants districts and communities should be aware of?
- What measurement density and longevity would be most useful to adequately evaluate exposure?
- What monitoring data types and applications would the SRP be looking for or find the most useful?



# Questions or Comments?

