

Pursuant to the authority vested in the Air Resources Board by the Health and Safety Code, Division 26, Part 5, Chapters 1 and 2; and

Pursuant to the authority vested in the undersigned by Health and Safety Code Sections 39515 and 39516 and Executive Order G-14-012;

IT IS ORDERED AND RESOLVED: That the following engine and emission control systems produced by the manufacturer are certified for use in small off-road equipment. Production engines shall be in all material respects the same as those for which certification is granted.

MODEL YEAR	ENGINE FAMILY	DISPLACEMENT (cc)	ENGINE CLASS	FUEL TYPE (CNG/LNG=compressed/liquefied natural gas LPG=liquefied petroleum gas)
2015	FYMXS.3572EK	357	4-stroke, ≥225 cc	Gasoline
DURABILITY HOURS	SPECIAL FEATURES & EMISSION CONTROL SYSTEMS		TYPICAL EQUIPMENT APPLICATION	
1000	TBI		Golf Cart	
ENGINE CODES/MODELS (rated power in kilowatt, kW)	See Attachment			
<small>ABBREVIATIONS: EM=engine modification TWC/OC=three-way/oxidizing catalyst WUTWC/WUOC=warm-up TWC/OC O2S=oxygen sensor HO2S=heated O2S EGR=exhaust gas recirculation AIR=secondary air injection PAIR=pulsed AIR MFI=multi port fuel injection SFI=sequential MFI TBI=throttle body fuel injection DFI=direct fuel injection TC/SC=turbo/super charger CAC=charge air cooler 2(prefix)=parallel (2)(suffix)=in series ECM=engine control module</small>				

The following are the hydrocarbon plus oxides of nitrogen (HC+NO_x), carbon monoxide (CO), and particulate matter (PM) emission standards (Title 13, California Code of Regulations, (13 CCR) Section 2403(b)), and certification emission levels for this engine family in grams per kilowatt-hour (g/kW-hr). Engines within this engine family shall have closed crankcases in conformance with Section 1054.115(a) of the "California Exhaust Emission Standards and Test Procedures for New 2013 and Later Small Off-Road Engines," adopted October 25, 2012.

*=not applicable	HC+NO _x (g/kW-hr)	CO (g/kW-hr)	PM (g/kW-hr)
STANDARD	8.0	549	*
FAMILY EMISSION LEVEL	*	*	*
CERTIFICATION LEVEL	6.4	312	*

BE IT FURTHER RESOLVED: That the family emission level(s) (FELs), as applicable, is an emission limit declared by the manufacturer for use in the averaging, banking and trading program and in lieu of an emission standard for certification. It serves as the applicable emission standard for determining compliance of any engine within this engine family under 13 CCR Sections 2403(e)(1) and 2407(a).

BE IT FURTHER RESOLVED: That for the listed engines, the manufacturer has submitted, and the Executive Officer hereby approves, the information and materials to demonstrate certification compliance with 13 CCR Section 2404 (emission control labels) and 13 CCR Sections 2405 and 2406 (emission control system warranty).

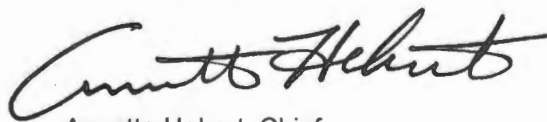
Engines certified under this Executive Order must conform to all applicable California emission regulations.

Quarterly reports of engines produced in this engine family for sale in California shall be submitted to the Executive Officer no later than 45 days after the end of each calendar quarter.

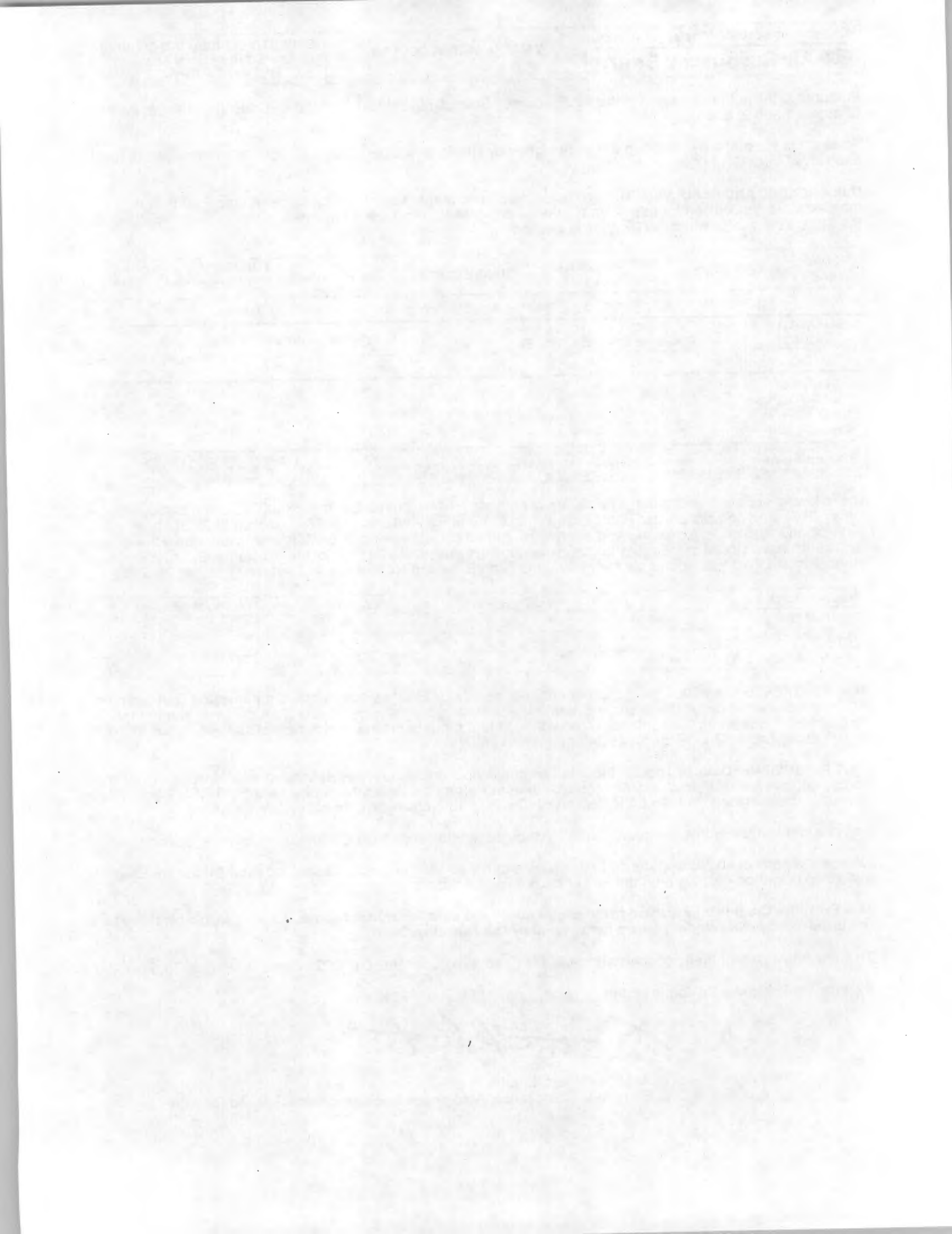
This Executive Order is only granted to the engine family and model-year listed above. Engines in this family that are produced for any other model-year are not covered by this Executive Order.

This Executive Order hereby cancels and replaces Executive Order U-U-017-0229 dated November 26, 2014.

Executed at El Monte, California on this 13 day of February 2015.



Annette Hebert, Chief
 Emissions Compliance, Automotive Regulations and Science Division



Model Year: 2015
 Manufacturer: YAMAHA MOTOR CO.,LTD.
 Engine Family: FYMXS.3572EK

Issued:
 Revised: 1/13/2015
 E.O. Number: u-u-017-0229-1

Small Off-Road Engine Model Summary Form

Units for Table: kW

Worst Case?	47. Model Designation	48. Sales Code	49. Displ (cc)	50. Bore/ Stroke	51. Ignition Timing	52. Max Power	53. Rated Speed (RPM)	54. Rated Torque	55. Torque Speed (RPM)	56. Emiss Control Sys
X	YDRAX5 PTV	50-State	357	85x63mm	BTDC 30	6.7kw	3400	22.03	2000	EM, TBI
	YDRAX5F	50-State	357	85x63mm	BTDC 30	6.7kw	3400	22.03	2000	EM, TBI
	YTF1AX5F	50-State	357	85x63mm	BTDC 30	6.7kw	3400	22.03	2000	EM, TBI
	YTF2AX5F	50-State	357	85x63mm	BTDC 30	6.7kw	3400	22.03	2000	EM, TBI
	YDRAX5 PTV-6	50-State	357	85x63mm	BTDC 30	6.7kw	3400	22.03	2000	EM, TBI
	YDRAX5 PTV-4	50-State	357	85x63mm	BTDC 30	6.7kw	3400	22.03	2000	EM, TBI
	YTF2AX5	50-State	357	85x63mm	BTDC 30	6.7kw	3400	22.03	2000	EM, TBI
	YDRAX5 SPORTS	50-State	357	85x63mm	BTDC 30	6.7kw	3400	22.03	2000	EM, TBI
	YTF1AX5 SPORTS	50-State	357	85x63mm	BTDC 30	6.7kw	3400	22.03	2000	EM, TBI
	YDRAX6 PTV	50-State	357	85x63mm	BTDC 30	6.7kw	3400	22.03	2000	EM, TBI
	YDRAX6F	50-State	357	85x63mm	BTDC 30	6.7kw	3400	22.03	2000	EM, TBI
	YTF1AX6F	50-State	357	85x63mm	BTDC 30	6.7kw	3400	22.03	2000	EM, TBI
	YTF2AX6F	50-State	357	85x63mm	BTDC 30	6.7kw	3400	22.03	2000	EM, TBI
	YDRAX6 PTV-6	50-State	357	85x63mm	BTDC 30	6.7kw	3400	22.03	2000	EM, TBI
	YDRAX6 PTV-4	50-State	357	85x63mm	BTDC 30	6.7kw	3400	22.03	2000	EM, TBI
	YTF2AX6	50-State	357	85x63mm	BTDC 30	6.7kw	3400	22.03	2000	EM, TBI
	YDRAX6 SPORTS	50-State	357	85x63mm	BTDC 30	6.7kw	3400	22.03	2000	EM, TBI
	YTF1AX6 SPORTS	50-State	357	85x63mm	BTDC 30	6.7kw	3400	22.03	2000	EM, TBI
	YDRAX5 Super	50-State	357	85x63mm	BTDC 30	6.7kw	3400	22.03	2000	EM, TBI
	YDRAX6 Super	50-State	357	85x63mm	BTDC 30	6.7kw	3400	22.03	2000	EM, TBI