

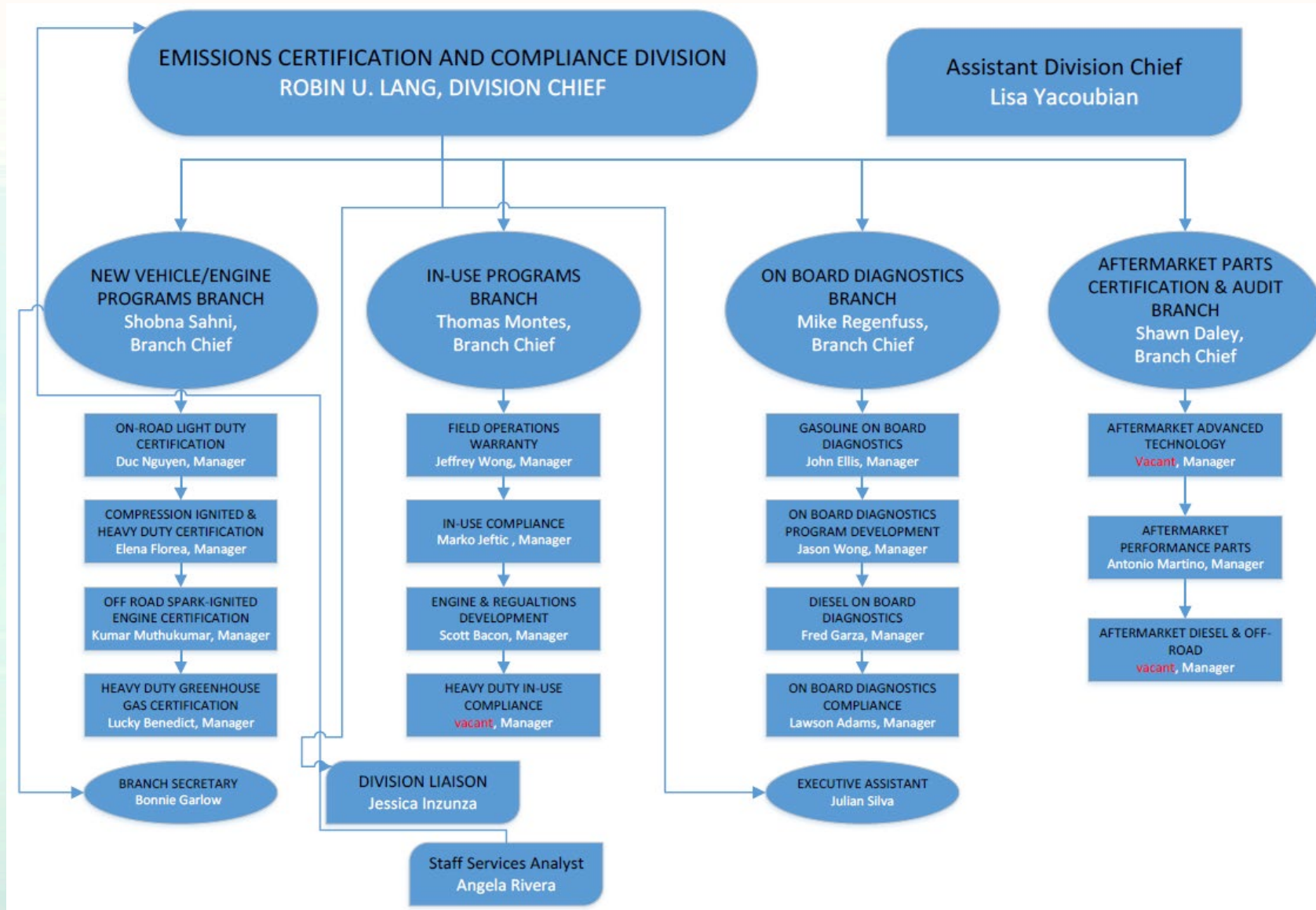


2024 Truck and Engine Manufacturers Association Compliance Workshop

Opening Session

April 24, 2024

Emissions Certification and Compliance Division Organization Update



Program Goals

- Ensure vehicles/engines meet regulatory requirements before they are sold in California
- Verify compliance in the field, and resolve issues
- Protect against emissions increases from aftermarket parts and
- Reduce in-use emissions through emission control retrofit program implementation

Heavy-Duty Engine/Vehicle Certification Process



CPP MEETINGS

CARB Staff & OEMs to preview products and timelines.
Highly Encouraged



APPLICATION SUBMITTED

Cert-Fee, E-File and E-Cert applications.
Be registered and allow Time



DOCUMENT REVIEW

AECD Documents
SCR Strategy Review
A/C Review
Alternative Testing



POST-PRODUCTION REPORTS

Templates available on our website
Check website for latest version

2023 Calendar Year Executive Orders Issued for New Vehicles/Engines



Background - Omnibus Regulation

- Omnibus Regulation - Adopted in 2021
- Clean Truck Partnership (CTP) – July 2023
- Omnibus 2023 (Legacy) Amendments
 - Impacts 2024-2026 model year requirements
 - Executive Officer Hearing – October 2023
 - Provided additional flexibility by incorporating CTP commitments in the regulatory language
- March 2024 Workshop
- Omnibus 2025 (Harmonization) Amendments
 - Planned for Nov. 2025 Board Hearing
 - Will impact 2027 and subsequent model year (MY) requirements
 - Mostly align/harmonize with federal requirements with some modifications

Omnibus Harmonization Elements

- Omnibus amendments will include changes to the following program elements:
 - Emissions Standards and Test Procedures
 - In-Use Corrective Action Requirements
 - On-Board Diagnostic (OBD)-related Amendments
 - Heavy-Duty (HD) In-Use Compliance Program

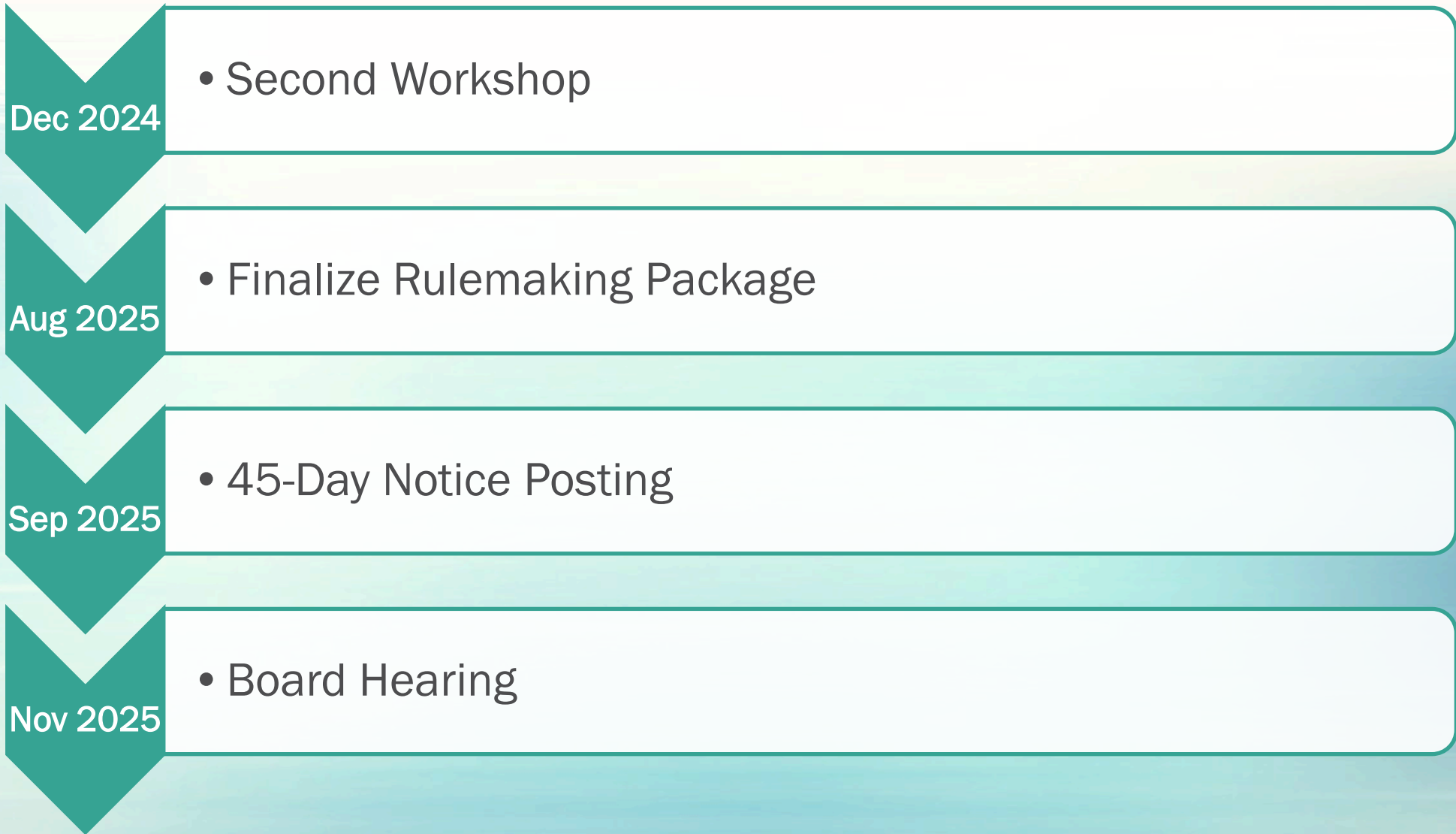
CARB Omnibus & U.S. EPA-NOx Rule*

CARB Omnibus Regulation	U.S. EPA-NOx Rule
Adopted on	
9/21/2021	1/24/2023
Applicability	
2024 and later MY	2027 and later MY
Spark-Ignition (SI) and Compression-Ignition (CI) > 10,000 pounds Heavy-Duty Engines (HDE)	SI and CI > 8,500 pounds HDEs
Elements included	
Certification Standards and Test Procedures	Certification Standards and Test Procedures
Averaging, Banking, and Trading (ABT)	ABT
In-Use Testing – 3-Bin Moving Average Window (MAW) Methodology	In-Use Testing – 2-Bin MAW
Emissions Warranty and Useful Life Periods	Emissions Warranty and Useful Life Periods

Omnibus / U.S. EPA-NOx Rule Harmonization

- Staff proposes to largely align with the U.S. EPA-NOx Rule with some modifications
- CARB is not committing to issue “deemed to comply certifications” based on U.S. EPA certifications
- Areas where CARB will maintain separate programs:
 - Certification program
 - OBD Program
 - Emissions Warranty Information Reporting Program
 - HD in-use compliance program (with adopting 2-Bin MAW methodology)
 - Clean Idle Label requirement – (mandatory program - not voluntary as required by U.S. EPA)

Omnibus Rulemaking Timeline



Questions?