



Enforcement Division

# Advisory

**To: PUBLIC & PRIVATE ON-ROAD FLEETS  
(COMMERCIAL VEHICLES), FLEET  
OPERATORS AND OTHER INTERESTED  
PARTIES**

Number 354

August 2007  
Rev. Jan 2011

## HEAVY DUTY DIESEL VEHICLE & ENGINE LABEL REQUIREMENTS:

This advisory is to inform heavy duty diesel fleet owners/operators of the labeling requirements of ARB's programs and regulations.

### 1. Engine Emission Certification Label

- For Engine Emission Certification Label Regulation background information, please visit our website at: <http://www.arb.ca.gov/enf/hdvp/bip/bip.htm>.
- Obtain label from Manufacturer/Dealer.
- Vehicles found in violation are subject to citation and penalties.
- Label must be maintained in a legible condition at the location placed by the engine manufacturer and must be the correct label for the engine (i.e. correspond to the engine serial number).
- Label must show engine was certified to US EPA emissions standards at the time of manufacture.
- See Advisory [364](#) for further information.
- If you have any questions on Engine Emission Certification Labels, please contact Gretchen Ratliff at [gratliff@arb.ca.gov](mailto:gratliff@arb.ca.gov).

### 2. Label for Solid Waste Collection Vehicle (SWCV) and Public Agency & Utility Fleets (PAU)

- SWCV & PAU Fleets are required to have labels on their vehicles stating the vehicle's compliance status.
- For SWCV Rule/Regulation information, please visit our website at: <http://www.arb.ca.gov/msprog/swcv/swcv.htm>
- For PAU Rule/Regulations information please visit our website at: <http://www.arb.ca.gov/msprog/publicfleets/publicfleets.htm>
- Fleets must install and maintain the labels.
- Frequently Asked Questions Link: <http://www.arb.ca.gov/msprog/swcv/swcvq&a.htm> and <http://www.arb.ca.gov/msprog/publicfleets/faq.htm>
- Vehicles found in violation are subject to citation and penalties.
- If you have any questions on vehicle labels please contact Kathleen Mead at [kmead@arb.ca.gov](mailto:kmead@arb.ca.gov).

#### EXAMPLE Engine Emission Certification LABEL:



#### For more Engine Emission Certification Label examples:

<http://www.arb.ca.gov/enf/advs/advs354/eec1.pdf>

#### EXAMPLE SWCV LABEL:

REFUSE COLLECTION VEHICLE EMISSION SYSTEM INFORMATION	
<b>COMPLIANT</b>	
OWNER:	
CONTRACTED TO:	
EMISSION CONTROL STRATEGY (ECS) NAME:	
INSTALLATION DATE:	

#### For more SWCV Label examples:

<http://www.arb.ca.gov/msprog/swcv/wastevehiclelabels.pdf>

#### EXAMPLE PAU LABEL:

PUBLIC AGENCY OR UTILITY VEHICLE EMISSION SYSTEM INFORMATION	
<b>COMPLIANT</b>	
OWNER/OPERATOR:	
EMISSION CONTROL STRATEGY FAMILY NAME:	
ENGINE MODEL YEAR:	INSTALLATION DATE:

#### For more PAU Label examples:

<http://www.arb.ca.gov/msprog/publicfleets/samplelabels.htm>

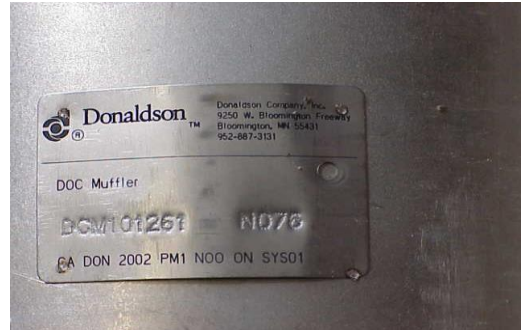
### 3. Label for Diesel Emission Control Devices (DECS)

- Fleet regulations require Best Available Control Technology installed on each vehicle. Verified DECS are one option for compliance.
- Two labels are required for the installation of a verified DECS (i.e. Diesel Particulate Filters & Diesel Oxidation Catalysts), one on the device and one on the engine.
- Label Requirements:
  - Name, Address, and Phone number of Manufacturer.
  - Diesel Emission Control Strategy Family Name (CA/MMM/YYYY/PM#/N#/APR/xxxx).
  - Product Serial Number (unique # to the device).
  - Month and Year Manufactured (xx-xx or 06-02) (this is not required if the information is readily obtained from the applicant by reference to the serial number).
- Label requirement are also found under Title 13,CCR, Section 2706(g):  
<http://www.arb.ca.gov/diesel/verdev/reg/oalapprovedprocedurefeb07.pdf>
- For general information on ARB's diesel emission control strategies verification program, please visit our website at:  
<http://www.arb.ca.gov/diesel/verdev/verdev.htm>
- If you have any questions on diesel emission control device labels, please contact Kathleen Mead at [kmead@arb.ca.gov](mailto:kmead@arb.ca.gov) or Shaun Daley at [sdaley@arb.ca.gov](mailto:sdaley@arb.ca.gov).

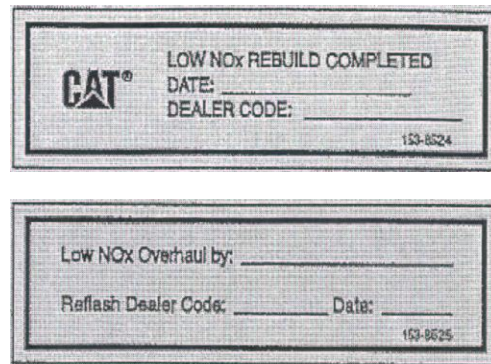
### 4. Low NOx REFLASH Software Label

- Owners of heavy-duty diesel trucks; school, transit and tour buses; and motor homes (gross vehicle rating over 6,000 pounds) operating in California, regardless of their state of registration, with select **1993-1998 model-year** heavy-duty diesel engines manufactured by Caterpillar, Cummins, Detroit Diesel, International, Mack/Renault, and Volvo are strongly encouraged to voluntarily have low NOx (nitrogen oxides) software installed prior to rebuild.
- At the time of engine rebuild, this software is required to be installed.
- For Low NOx REFLASH program background information please visit our website at:  
<http://www.arb.ca.gov/msprog/hdsoftware/hdsoftware.htm>
- Obtain Low NOx REFLASH software from an authorized dealers in California for eligible 1993-1998 diesel engines by area and by engine manufacturer. See link:  
<http://www.arb.ca.gov/msprog/hdsoftware/authdealers/authdealers.htm>
- Frequently Asked Questions Link:  
<http://www.arb.ca.gov/msprog/hdsoftware/hdsoftware.htm>
- If you have any questions on the Low NOx REFLASH program, please contact Hortencia Mora at [hmora@arb.ca.gov](mailto:hmora@arb.ca.gov).

### EXAMPLE DIESEL EMISSION CONTROL DEVICES (DECS) LABEL:



### EXAMPLE of a Low NOx REFLASH LABEL:



For more REFLASH Label examples: See Link:  
<http://www.arb.ca.gov/enf/advs/advs354/rle.pdf>

**RECOMMENDED: Keep a copy of the invoice from your REFLASH Label installation in the glove box of your vehicle. Also, keep documentation if your engine cannot be configured.**

If you have any questions regarding any of these labeling programs and regulations, please contact 1-800-END-SMOG.