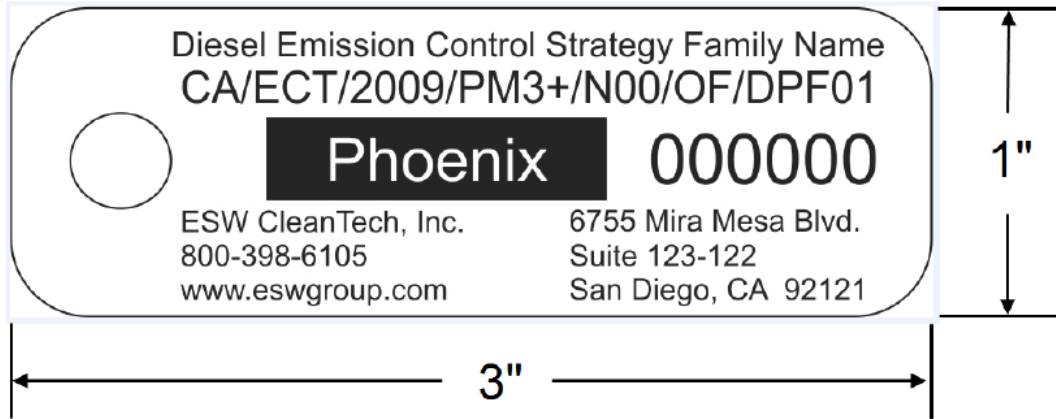


Labels for the ESW CleanTech Phoenix System
Relating to Executive Order Series DE-13-004
Effective Date: September 6, 2013
Page 1 of 2



Notes:

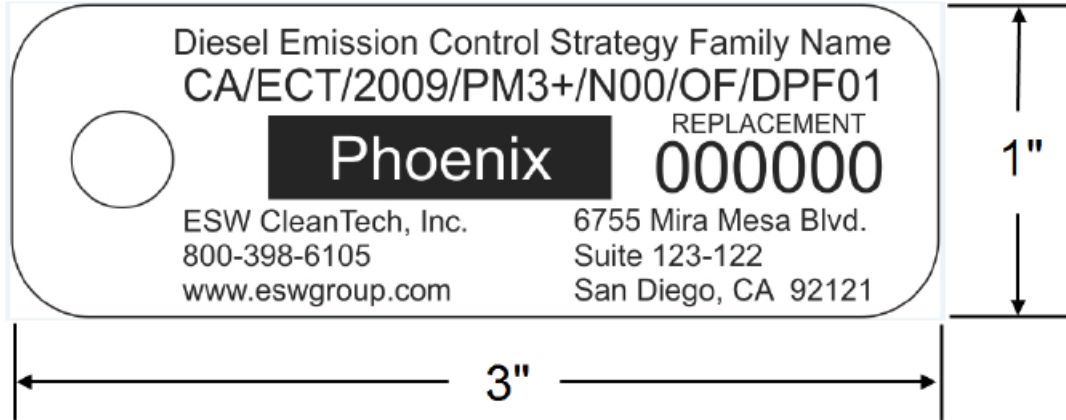
- Month and year of manufacture are not included. This information is readily obtained from ESW CleanTech by reference to the serial number.
- The labels that are attached to the Phoenix and engine are identical. The figures below illustrate typical installations: one on an engine stud, the other on the electronic controller's wiring harness.



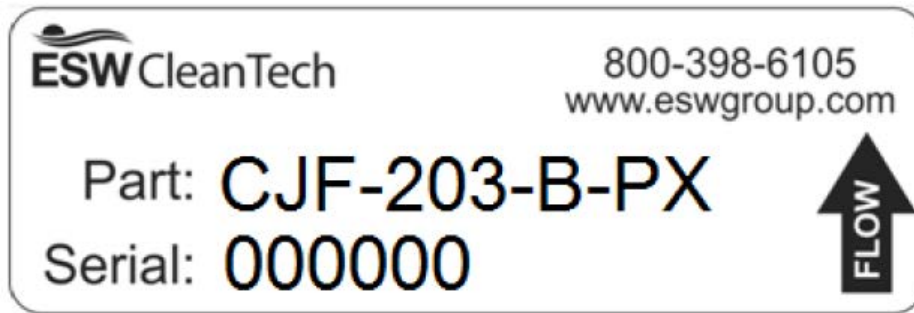
Labels for the ESW CleanTech Phoenix System
Relating to Executive Order Series DE-13-004
Effective Date: September 6, 2013
Page 2 of 2

Additional System Labels

The following is a sample of the replacement label:



The following is a sample of the label that is permanently attached to the diesel particulate filter:



The following is a sample of the label that is permanently attached to the inlet cone:

