

California Verification Labels For Purifilter EGR On-road Top Level Product Label "A" and Engine Label

VERIFIED APPLICATIONS

Label - Top Level Product
 Label on DPF
 (stainless steel)

Engine Label
 (foil / plastic composite)

CDTi Engine Control Systems
 MADE IN CANADA
CA/ECS/2013/PM3+/N00/ON/DPF01
 PRODUCT: **Purifilter™ EGR PCSXX**
 PART NO.: **A76M-XXXX***
 SERIAL NO.: **UXXXXX**
 MFG. DATE: **MM/DD/YY ZYYYYYY**
 83 Commerce Valley Dr E, Thornhill, ON, CAN L3T 7T3 1-800-661-9963
 1621 Fiske Place, Oxnard, CA, USA 93033 1-800-331-9247

↑
FLOW

CDTi Engine Control Systems
 83 Commerce Valley Dr E, Thornhill, ON, CAN L3T 7T3 1-800-661-9963
 1621 Fiske Place, Oxnard, CA, USA 93033, 1-800-331-9247
Purifilter™ EGR
CA/ECS/2013/PM3+/N00/ON/DPF01
 Serial #: U
 Date of Manufacture: (month/year)

Window area {

Notes on Engine Label


- Serial Number and Date of Mfr will be under adhesive window allowing installer to transfer information from product label- instructions will be provided in product manual
- Dual DPF Systems will have both applicable serial numbers and date of manufacture written into the window

*Notes on Product Label

- Product PCSXX or DCSXX; XX = Purifilter EGR Model / Filter Size / single or dual DPF exhaust
- Part Number*: If sold as a complete system, the Part Number begins with an A76M pre-fix. XXXX= numeral from 0 thru 9.
- Serial Number Pre-fix "U" on all A76M system or C19E spare filters will denote ARB warranted product if returned under warranty claim to CDTi. XXXXX= numerals from 1 thru 9
- Serial Number Pre-fix will also denote which Verification Order was applicable to product
- Serial Number also links to Date of Mfr in CDTi internal records
- ZYYYYYY represents filter lot code and may be 7 to 11 digits in length

Purifilter EGR DOC Subcomponent Labels On-road

Label B- DOC component label (stainless steel)

	MADE IN CANADA <i>Engine Control Systems</i>
PRODUCT:	<input type="text"/>
PART NO.:	C10M-XXXX
SERIAL NO.:	XXXXXXXX
MFG. DATE:	<input type="text"/>
83 Commerce Valley Dr E. Thornhill, ON, CAN L3T 7T3 1-800-661-9963 1621 Fiske Place, Oxnard, CA, USA, 93033 1-800-331-9247	

↑
FLOW

*Notes on Product Label

- Product field left blank
- Serial Number links to Date of Mfr in CDTi internal records
- MFG.DATE. Left blank

California Verification Labels For Purifilter EGR On-road

Verified Hwy Applications
Spare Filters

Engine Label


(foil / plastic composite)

- Not Applicable

Notes on Engine Label

- Not applicable for spare filters as they are used on multiple vehicles for short periods of time

Label - Top Level Product
Label on DPF
(stainless steel)

		MADE IN CANADA <i>Engine Control Systems</i>		
CA/ECS/2013/PM3+/N00/ON/DPF01				
PRODUCT:	Purifilter™ EGR PCSXX			
PART NO.:	C19E-XXXX*			
SERIAL NO.:	UXXXXX	S	↑ FLOW ← Note	
MFG. DATE:	MM/DD/YY	ZYYYYYY		
<small>83 Commerce Valley Dr E, Thornhill, ON, CAN L3T 7T3 1-800-661-9963 1621 Fiske Place, Oxnard, CA, USA 93033 1-800-331-9247</small>				

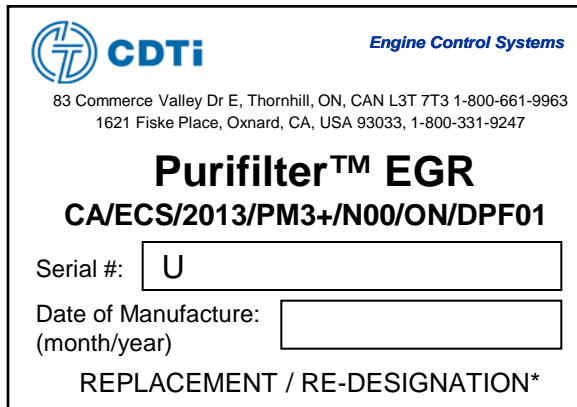
*Notes on Product Label

- Product PCSXX or DCSXX; XX = Purifilter Model / Filter Size / Filter Size / single or dual DPF exhaust
- Part Number*: If sold as a spare centerbody, it would have a C19E pre-fix in the part number. XXXX= numeral from 0 thru 9.
- Serial Number Pre-fix "U" on all A76M system or C19E spare or replacement filters will denote ARB warranted product if returned under warranty claim to CDTi. XXXXX= numerals from 1 thru 9
- **NOTE: S represents a spare appears only if applicable**
- Serial Number Pre-fix will also denote which Verification Order was applicable to product
- Serial Number also links to Date of Mfr in CDTi internal records
- ZYYYYYY represents filter lot code and may be 7 to 11 digits in length

California Verification Labels For Purifilter EGR On-road

Verified Hwy Applications
Warranty Replacement
Filters & Engine Labels

Engine Label (foil / plastic composite)

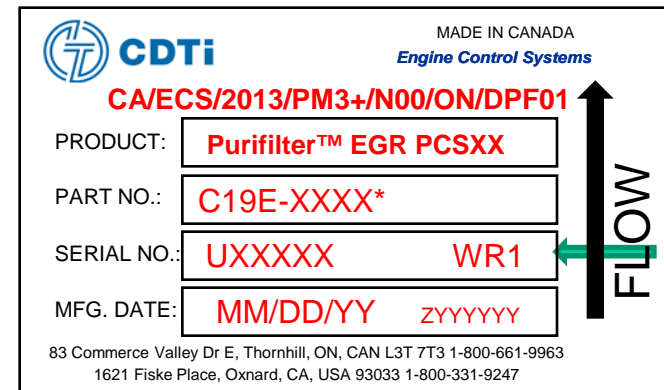


Window area

Notes on Engine Label

- Serial Number and Date of Mfr will be under adhesive window allowing installer to transfer information from product label- instructions will be provided in product manual
- * REPLACEMENT / RE-DESIGNATION appears at bottom of label if applicable (REPLACEMENT = replacement label)

Label - Top Level Product Label on DPF (stainless steel)



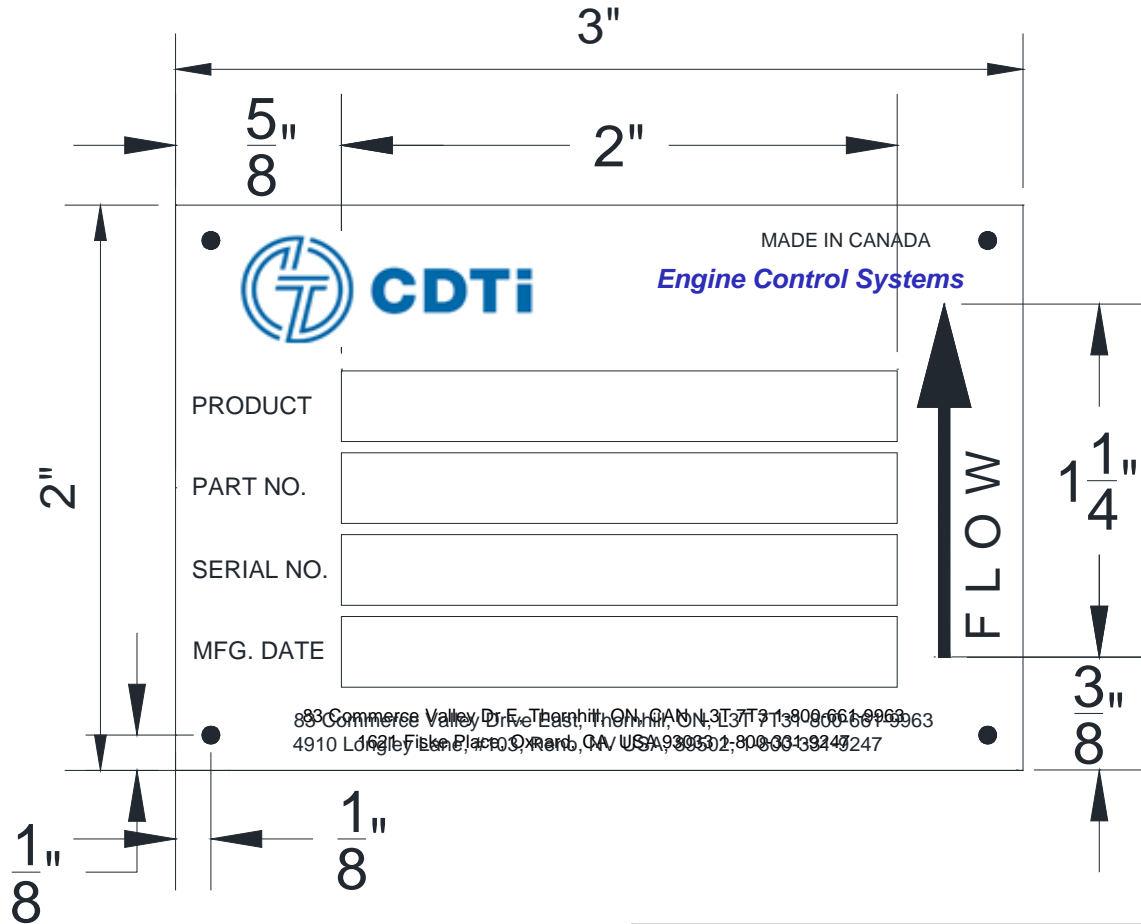
↑ FLOW

Note

*Notes on Product Label

- Product PSCXX; XX = Purifilter Model / Filter Size
- Part Number*: If sold as a spare centerbody, it would have a C19E pre-fix in the part number. XXXX= numeral from 0 thru 9.
- Serial Number Pre-fix “U” on all A76M system or C19E spare or replacement filters will denote ARB warranted product if returned under warranty claim to CDTi. XXXXX= numerals from 1 thru 9
- **NOTE: WR1 represents a filter replaced under warranty- appears only if applicable**
- Serial Number Pre-fix will also denote which Verification Order was applicable to product
- Serial Number also links to Date of Mfr in CDTi internal records
- ZYYYYYY represents filter lot code and may be 7 to 11 digits in length

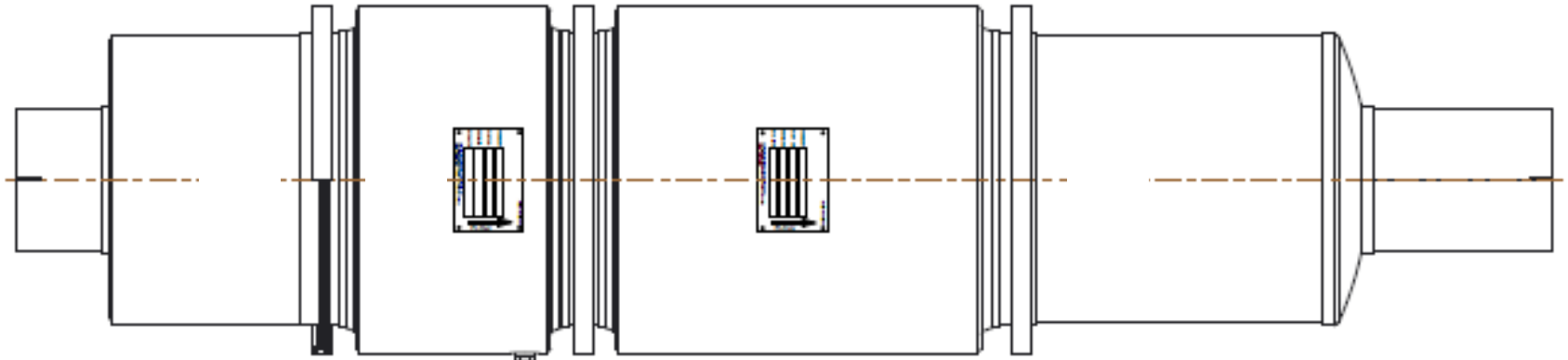
Labels for CDTi (Engine Control Systems) Purifier EGR System
Relating to Executive Order Series DE-13-001
Effective Date: December 16, 2013



83 Commerce Valley Drive, Thornhill, ON, CANADA L3T 7T7 1-905-661-9969
 4910 Lacey Lane, Fremont, CA, USA 94538 1-800-331-3247

ENGINE CONTROL SYSTEM				
THIS DRAWING CONTAINS CONFIDENTIAL INFORMATION AND IS THE EXCLUSIVE PROPERTY OF ENGINE CONTROL SYSTEMS LTD (ECS). NEITHER THE DOCUMENT NOR ITS CONTENTS ARE TO BE DISCLOSED TO A THIRD PARTY IN ANY WAY WITHOUT PRIOR WRITTEN PERMISSION OF ECS.	CHK'D	APPR'D	PART DESCRIPTION	
	CUSTOMER DWG NO.	REV.	ECS DOC/DPF PRODUCT LABEL	
	ORIGINAL MUFFLER NO.		SCALE:	DRAWN: M. RIAHI
	JIG NO.		DATE: 31-MAY-12	MATERIAL:
	TOLERANCE (UNLESS OTHERWISE STATED)		SHEET: 1 of 1	REV. C
PROJECTION 	FRACTIONAL ± 1/32	ANGLES ±	PART NO. J26-0059	
DECIMAL .XX ±	XXX .XXX ±	.010		

Purifilter EGR Label Locations



SCALE 0.188

Label	Description
A	Top Level DPF System Label with verification information
B	DOC label