

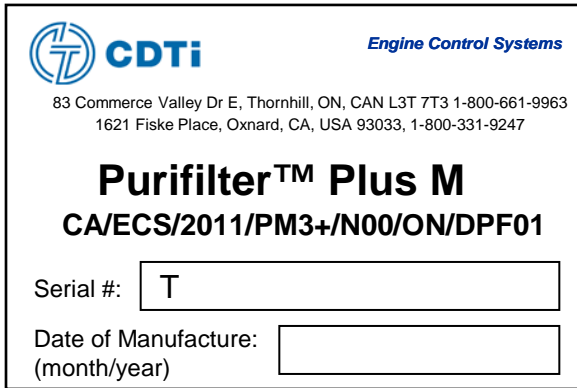
# California Verification Labels For Purifilter Plus M

Top Level Product Label and Engine Label

**VERIFIED APPLICATIONS**

## Engine Label

(foil / plastic composite)



CDTi Engine Control Systems  
 83 Commerce Valley Dr E, Thornhill, ON, CAN L3T 7T3 1-800-661-9963  
 1621 Fiske Place, Oxnard, CA, USA 93033, 1-800-331-9247

**Purifilter™ Plus M**  
**CA/ECS/2011/PM3+/N00/ON/DPF01**

Serial #:

Date of Manufacture:

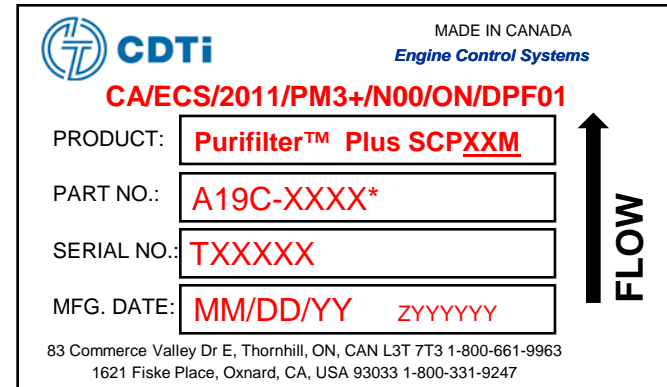
(month/year)

Window  
 area

### Notes on Engine Label

- Serial Number and Date of Mfr will be under adhesive window allowing installer to transfer information from product label- instructions will be provided in product manual

## Label - Top Level Product Label on DPF (stainless steel)



CDTi Engine Control Systems MADE IN CANADA  
**CA/ECS/2011/PM3+/N00/ON/DPF01**

PRODUCT:

PART NO.:

SERIAL NO.:

MFG. DATE:

83 Commerce Valley Dr E, Thornhill, ON, CAN L3T 7T3 1-800-661-9963  
 1621 Fiske Place, Oxnard, CA, USA 93033 1-800-331-9247

FLOW

### \*Notes on Product Label

- Product SCPXXM; XX = Purifilter Plus M Model
- Part Number\*: If sold as a complete system, the Part Number begins with an A19C pre-fix. XXXX= numerals from 0 thru 9.
- Serial Number Pre-fix "T" on all A19C system or C19C spare filters will denote ARB warranted product if returned under warranty claim to CDTi. XXXXX= numerals from 1 thru 9
- Serial Number Pre-fix will also denote which Verification Order was applicable to product
- Serial Number also links to Date of Mfr in CDTi internal records
- ZYYYYYY represents filter lot code format and will vary in length

# California Verification Labels For Purifilter Plus M

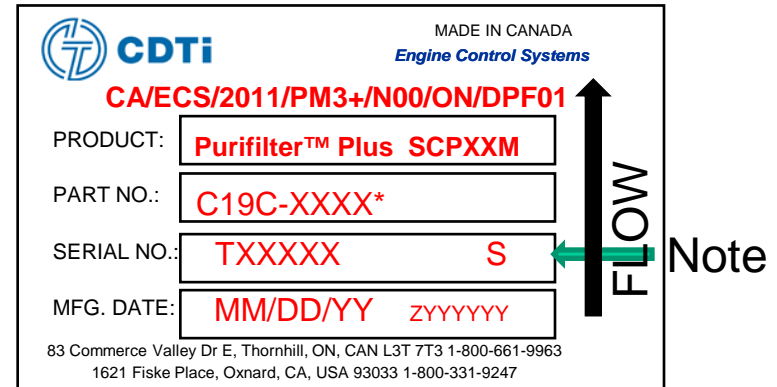
**VERIFIED HWY APPLICATIONS**  
**Spare Filters**

Engine Label  
(foil / plastic composite)  
- Not Applicable

## Notes on Engine Label

- Not applicable for spare filters as they are used on multiple vehicles for short periods of time

Label - Top Level Product  
Label on DPF  
(stainless steel)



## \*Notes on Product Label

- Product SCPXXM ; XX = Purifilter Plus Model / Filter Size
- Part Number\*: If sold as a spare centerbody, it would have a C19C pre-fix in the part number. XXXX= numerals from 0 thru 9.
- Serial Number Pre-fix "T" on all A19C system or C19C spare or replacement filters will denote ARB warranted product if returned under warranty claim to CDTi. XXXXX= numerals from 1 thru 9
- **NOTE: S represents a spare appears only if applicable**
- Serial Number Pre-fix will also denote which Verification Order was applicable to product
- Serial Number also links to Date of Mfr in CDTi internal records
- ZYYYYYY represents filter lot code and will vary in length

# California Verification Labels For Purifilter Plus M

**VERIFIED HWY APPLICATIONS**  
**Warranty Replacement**  
**Filter & Engine Labels**

Label - Top Level Product  
 Label on DPF  
 (stainless steel)

## Engine Label (foil / plastic composite)

CDTi Engine Control Systems  
 MADE IN CANADA  
**CA/ECS/2011/PM3+/N00/ON/DPF01**  
 PRODUCT: **Purifilter™ Plus SCPXXM**  
 PART NO.: **C19C-XXXX\***  
 SERIAL NO.: **TXXXXX WR1**  
 MFG. DATE: **MM/DD/YY ZYYYYYY**  
 83 Commerce Valley Dr E, Thornhill, ON, CAN L3T 7T3 1-800-661-9963  
 1621 Fiske Place, Oxnard, CA, USA 93033 1-800-331-9247

CDTi Engine Control Systems  
 83 Commerce Valley Dr E, Thornhill, ON, CAN L3T 7T3 1-800-661-9963  
 1621 Fiske Place, Oxnard, CA, USA 93033, 1-800-331-9247  
**Purifilter™ Plus M**  
**CA/ECS/2011/PM3+/N00/ON/DPF01**  
 Serial #: **T**  
 Date of Manufacture:   
 (month/year)  
 REPLACEMENT / RE-DESIGNATION\*

Window area

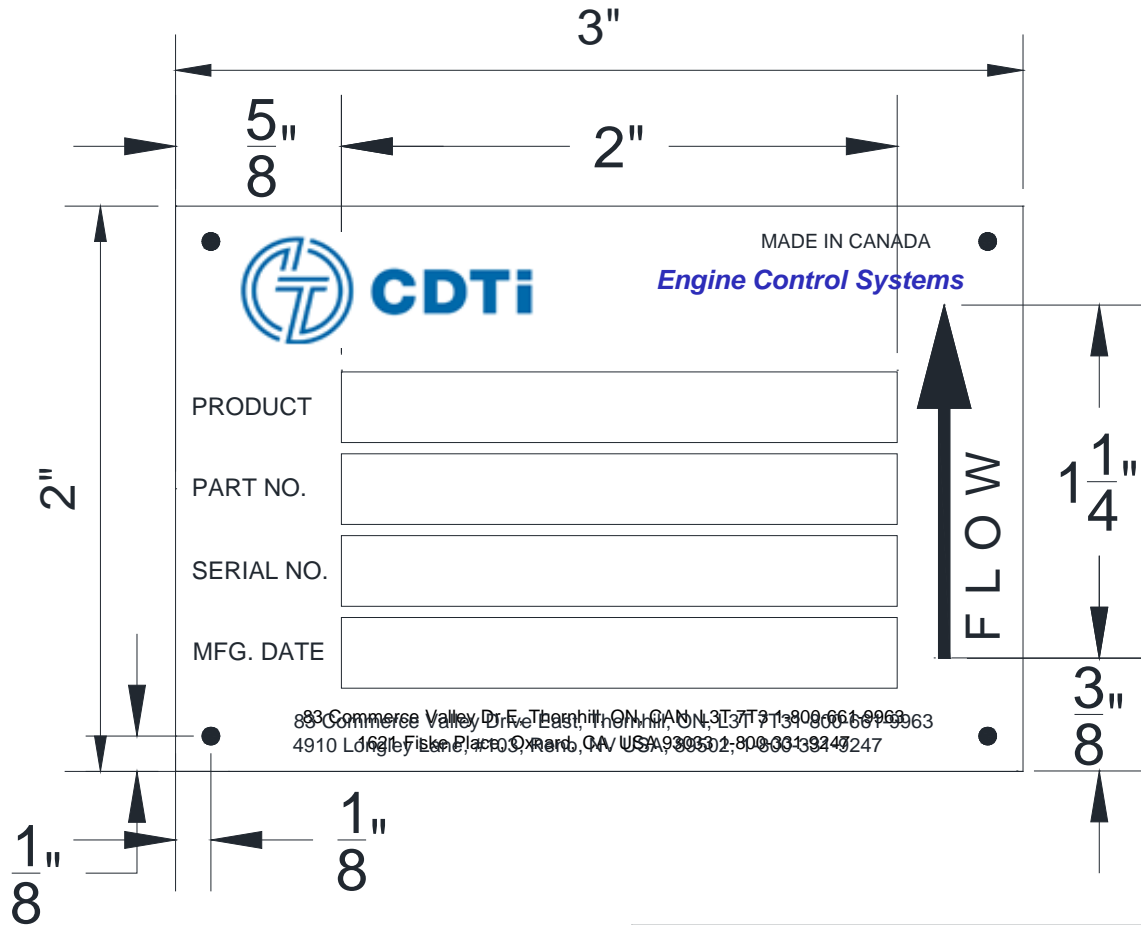
### Notes on Engine Label

- Serial Number and Date of Mfr will be under adhesive window allowing installer to transfer information from product label- instructions will be provided in product manual
- REPLACEMENT / RE-DESIGNATION appears at bottom of label if applicable (REPLACEMENT = replacement label)

### \*Notes on Product Label

- Product SCPXXM; XX = Purifilter Plus M Model / Filter Size
- Part Number\*: If sold as a spare centerbody, it would have a C19C pre-fix in the part number. XXXX= numeral from 0 thru 9.
- Serial Number Pre-fix “T” on all A19C system or C19C spare or replacement filters will denote ARB warranted product if returned under warranty claim to CDTi. XXXXX= numerals from 1 thru 9
- **NOTE: WR1 represents a filter replaced under warranty- appears only if applicable**
- Serial Number Pre-fix will also denote which Verification Order was applicable to product
- Serial Number also links to Date of Mfr in CDTi internal records
- ZYYYYYY represents filter lot code and will vary in length

**Labels for CDTi (Engine Control Systems) Purifilter Plus M System  
Relating to Executive Order Series DE-11-005  
Effective Date: December 16, 2013**



ENGINE CONTROL SYSTEM				
<small>THIS DRAWING CONTAINS CONFIDENTIAL INFORMATION AND IS THE EXCLUSIVE PROPERTY OF ENGINE CONTROL SYSTEMS LTD (ECS). NEITHER THE DOCUMENT NOR ITS CONTENTS ARE TO BE DISCLOSED TO A THIRD PARTY IN ANY WAY WITHOUT PRIOR WRITTEN PERMISSION OF ECS.</small>	CHK'D	APPR'D	PART DESCRIPTION	
	CUSTOMER DWG NO.	REV.	ECS DOC/DPF PRODUCT LABEL	
	ORIGINAL MUFFLER NO.		SCALE:	DRAWN: M. RIAHI
	JIG NO.		DATE: 31-MAY-12	MATERIAL:
PROJECTION	TOLERANCE (UNLESS OTHERWISE STATED)		SHEET: 1 of 1	
	FRACTIONAL ±	1/32 ANGLES ±	REV. C	
	DECIMAL .XX ±	XXX .XXX ± .010	PART NO. J26-0059	

# Confidential Business Information

Labels for CDTi (Engine Control Systems) Purifier Plus M System  
Relating to Executive Order Series DE-11-005  
Effective Date: December 16, 2013

## CDTi BPM Labeling



### Standard Alarm Settings

Yellow: 150 mbars

Red: 200 mbars



### Alternate Alarm Settings

Yellow: 180 mbars

Red: 225 mbars

Note: Yellow Dot on BPM module  
faceplate indicates alternate settings  
defined above used