

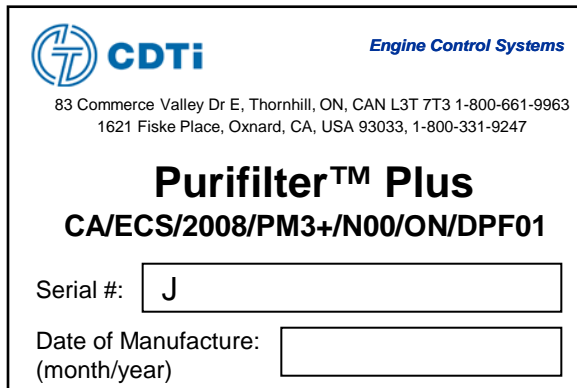
# California Verification Labels For Purifilter Plus

Top Level Product Label and Engine Label

**VERIFIED APPLICATIONS**

## Engine Label

(foil / plastic composite)



CDTi Engine Control Systems  
 83 Commerce Valley Dr E, Thornhill, ON, CAN L3T 7T3 1-800-661-9963  
 1621 Fiske Place, Oxnard, CA, USA 93033, 1-800-331-9247

**Purifilter™ Plus**  
**CA/ECS/2008/PM3+/N00/ON/DPF01**

Serial #:

Date of Manufacture:

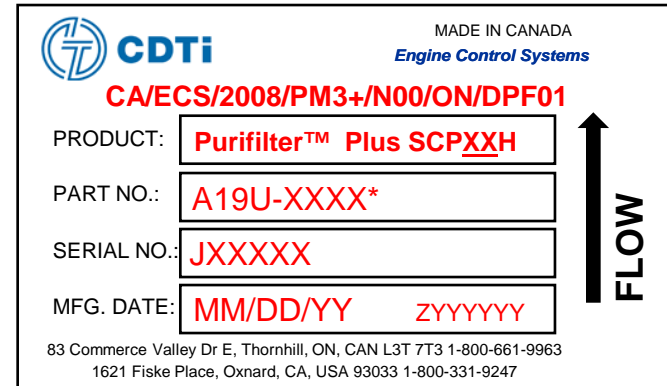
(month/year)

Window  
 area

### Notes on Engine Label

- Serial Number and Date of Mfr will be under adhesive window allowing installer to transfer information from product label- instructions will be provided in product manual

Label - Top Level Product  
 Label on DPF  
 (stainless steel)



CDTi Engine Control Systems  
 MADE IN CANADA  
**CA/ECS/2008/PM3+/N00/ON/DPF01**

PRODUCT:

PART NO.:

SERIAL NO.:

MFG. DATE:

83 Commerce Valley Dr E, Thornhill, ON, CAN L3T 7T3 1-800-661-9963  
 1621 Fiske Place, Oxnard, CA, USA 93033 1-800-331-9247

FLOW ↑


### \*Notes on Product Label

- Product SCPXXH; XX = Purifilter Plus Model
- Part Number\*: If sold as a complete system, the Part Number begins with an A19U pre-fix. XXXX= numerals from 0 thru 9.
- Serial Number Pre-fix "J" on all A19U system or C19U spare filters will denote ARB warranted product if returned under warranty claim to CDTi. XXXXX= numerals from 1 thru 9
- Serial Number Pre-fix will also denote which Verification Order was applicable to product
- Serial Number also links to Date of Mfr in CDTi internal records
- ZYYYYYY represents filter lot code format and will vary in length

# California Verification Labels For Purifilter Plus VERIFIED HWY APPLICATIONS Spare Filters

Engine Label  
(foil / plastic composite)  
- Not Applicable

Label - Top Level Product  
Label on DPF  
(stainless steel)

		MADE IN CANADA <i>Engine Control Systems</i>	
<b>CA/ECS/2008/PM3+/N00/ON/DPF01</b>			
PRODUCT:	Purifilter™ Plus SCPXXH		
PART NO.:	C19U-XXXX*		
SERIAL NO.:	JXXXXX	S	↑ FLOW ← Note
MFG. DATE:	MM/DD/YY	ZYYYYYY	
<small>83 Commerce Valley Dr E, Thornhill, ON, CAN L3T 7T3 1-800-661-9963 1621 Fiske Place, Oxnard, CA, USA 93033 1-800-331-9247</small>			

### \*Notes on Product Label

- Product SCPXX H; XX = Purifilter Plus Model / Filter Size
- Part Number\*: If sold as a spare centerbody, it would have a C19U pre-fix in the part number.  
XXXX= numerals from 0 thru 9.
- Serial Number Pre-fix "J" on all A19U system or C19U spare or replacement filters will denote ARB warranted product if returned under warranty claim to CDTi. XXXXX= numerals from 1 thru 9
- **NOTE: S represents a spare appears only if applicable**
- Serial Number Pre-fix will also denote which Verification Order was applicable to product
- Serial Number also links to Date of Mfr in CDTi internal records
- ZYYYYYY represents filter lot code format and will vary in length

### Notes on Engine Label

- Not applicable for spare filters as they are used on multiple vehicles for short periods of time

# California Verification Labels

## For Purifilter Plus

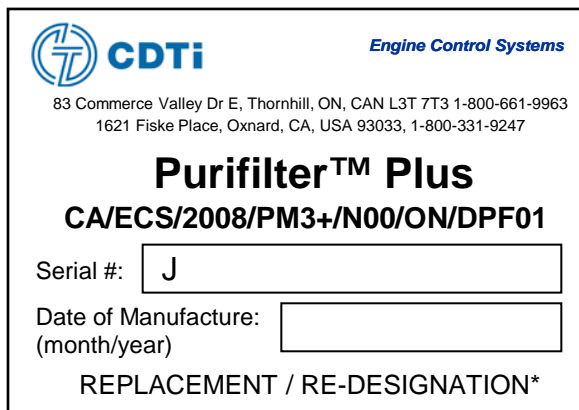
**VERIFIED HWY APPLICATIONS**

**Warranty Replacement**

**Filters & Engine Labels**

## Engine Label

(foil / plastic composite)



CDTi Engine Control Systems  
 83 Commerce Valley Dr E, Thornhill, ON, CAN L3T 7T3 1-800-661-9963  
 1621 Fiske Place, Oxnard, CA, USA 93033, 1-800-331-9247

**Purifilter™ Plus**  
**CA/ECS/2008/PM3+/N00/ON/DPF01**

Serial #:

Date of Manufacture:

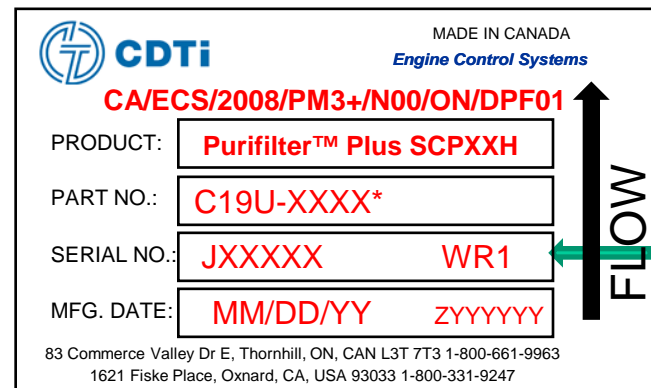
REPLACEMENT / RE-DESIGNATION\*

Window area

### Notes on Engine Label

- Serial Number and Date of Mfr will be under adhesive window allowing installer to transfer information from product label- instructions will be provided in product manual
- \* REPLACEMENT / RE-DESIGNATION appears at bottom of label if applicable (REPLACEMENT = replacement label)

Label - Top Level Product  
 Label on DPF  
 (stainless steel)



CDTi Engine Control Systems  
 MADE IN CANADA  
**CA/ECS/2008/PM3+/N00/ON/DPF01**

PRODUCT:

PART NO.:

SERIAL NO.:

MFG. DATE:

83 Commerce Valley Dr E, Thornhill, ON, CAN L3T 7T3 1-800-661-9963  
 1621 Fiske Place, Oxnard, CA, USA 93033 1-800-331-9247

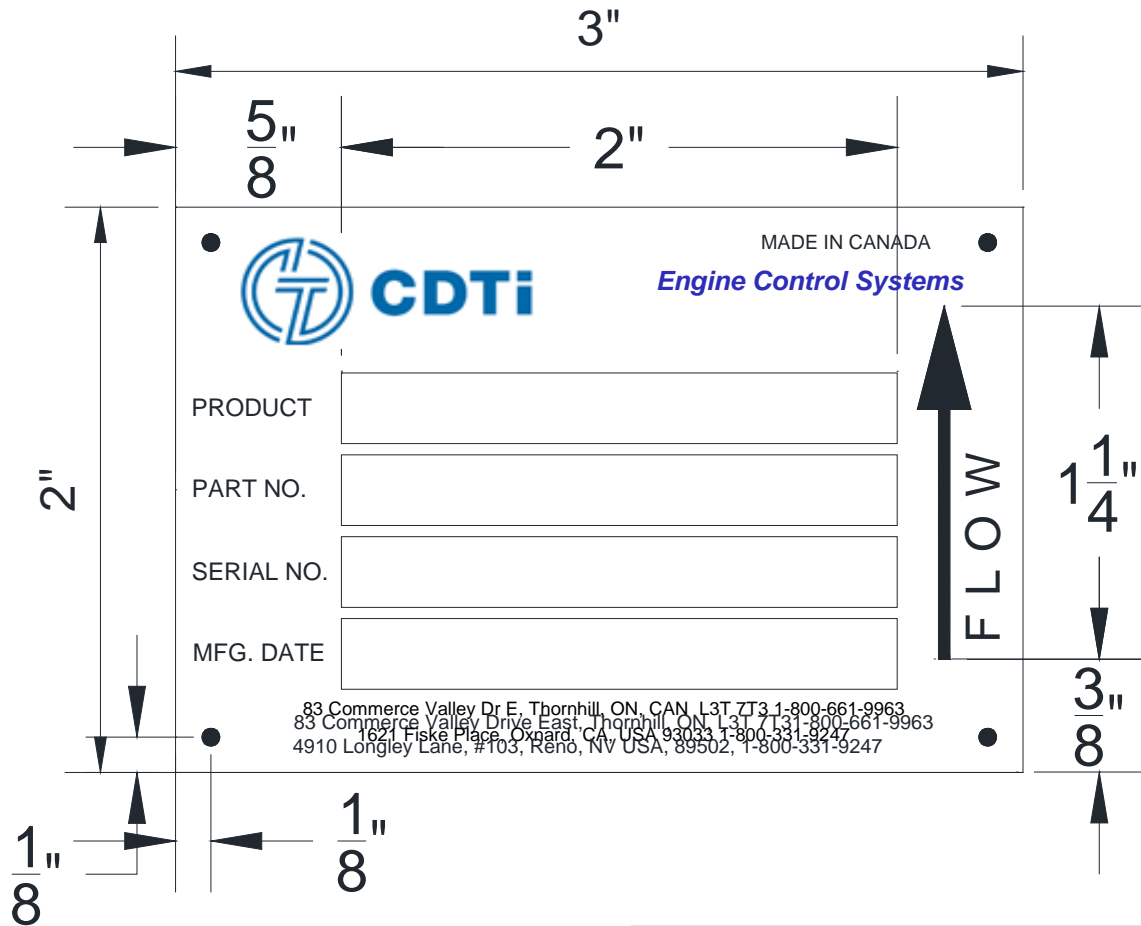
↑ FLOW

Note

### \*Notes on Product Label

- Product SCXXH; XX = Purifilter Plus Model / Filter Size
- Part Number\*: If sold as a spare centerbody, it would have a C19U pre-fix in the part number. XXXX= numeral from 0 thru 9.
- Serial Number Pre-fix "J" on all A19U system or C19U spare or replacement filters will denote ARB warranted product if returned under warranty claim to CDTi. XXXXX= numerals from 1 thru 9
- **NOTE: WR1 represents a filter replaced under warranty- appears only if applicable**
- Serial Number Pre-fix will also denote which Verification Order was applicable to product
- Serial Number also links to Date of Mfr in CDTi internal records
- ZYYYYYY represents filter lot code format and will vary in length

**Labels for CDTi (Engine Control Systems) Purifier Plus System**  
**Relating to Executive Order Series DE-08-010**  
**Effective Date: December 16, 2013**



ENGINE CONTROL SYSTEM				
THIS DRAWING CONTAINS CONFIDENTIAL INFORMATION AND IS THE EXCLUSIVE PROPERTY OF ENGINE CONTROL SYSTEMS LTD (ECS). NEITHER THE DOCUMENT NOR ITS CONTENTS ARE TO BE DISCLOSED TO A THIRD PARTY IN ANY WAY WITHOUT PRIOR WRITTEN PERMISSION OF ECS.	CHK'D	APPR'D	PART DESCRIPTION	
	CUSTOMER DWG NO.	REV.	ECS DOC/DPF PRODUCT LABEL	
	ORIGINAL MUFFLER NO.		SCALE:	DRAWN: M. RIAHI
	JIG NO.		DATE: 31-MAY-12	MATERIAL:
	TOLERANCE (UNLESS OTHERWISE STATED)		SHEET: 1 of 1	
FRACTIONAL ±	1/32	ANGLES ±	REV. C	
DECIMAL .XX ±	XXX	.XXX ±	.010	
PROJECTION		PART NO. J26-0059		

# Confidential Business Information

Labels for CDTi (Engine Control Systems) Purifier Plus System  
Relating to Executive Order Series DE-08-010  
Effective Date: December 16, 2013

## CDTi BPM Labeling



### Standard Alarm Settings

Yellow: 150 mbars

Red: 200 mbars



### Alternate Alarm Settings

Yellow: 180 mbars

Red: 225 mbars

Note: Yellow Dot on BPM module  
faceplate indicates alternate settings  
defined above used