

Label for the HUSS FS-MK Filter System
Relating to Executive Order Series DE-06-007
Effective Date: December 22, 2011

HUSS Diesel Particulate Filter
www.huss-filters.com

CARB CA/HUS/2006/PM3+/NOO/OFF/DPF01

TYPE

No. YEAR

HUSS, INC. 77524 El Duna Ct. Suite H
Palm Desert, CA 92211 Phone: 1-888-360-4877

CARB label is metal and should be displayed on the engine and the filter.

CARB = DECS Designation provided by CARB

TYPE = HUSS model # (see list below)

No. = Filter serial number provided by HUSS for record keeping and tracking.

YEAR = Manufactures Date / Month and Year purchased

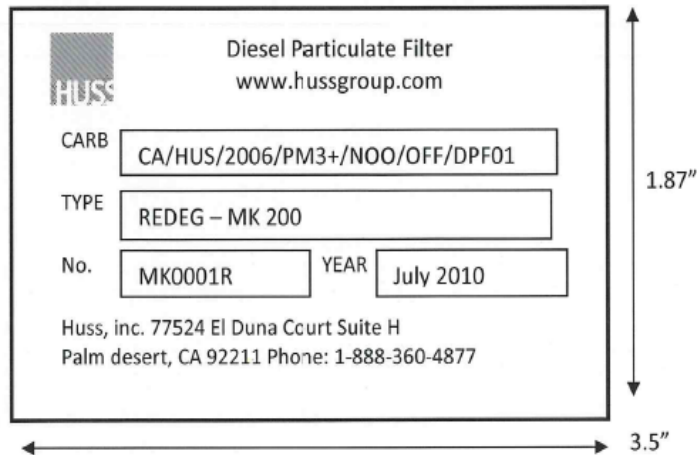
HUSS FS - MK System Model Numbers

Single filters: FS 40 MKS, FS 50 MKS, FS 80 MKS, FS 80 MKM, FS 80 MKL, FS 100 MKS, FS 100 MKM, FS 100 MKL, MK 35, MK 50, MK75, MK 150, MK 200, MK 300

Double filters: FS 160 MKL, FS 200 MKS*obsolete, FS 200 MKM, FS 200 MKL, MK 400, MK 600

Note: The labels that are attached to the FS-MK filter and the engine are identical.

HUSS FS-MK Filter System Re-Designated Label
Relating to Executive Order Series DE-06-007
Effective Date: December 22, 2011



CARB label is metal and should be displayed on the engine and the filter.

Re-Designation - Title 13, Division 3 §2706 (i) This label is only for complete filter systems that have been reviewed and approved by HUSS to be taken off of one vehicle / equipment and re-designated to a another vehicle / equipment.

A Re-designated filter will keep the original No. , with the addition of an R at the end of the serial number. The Year will also stay the same.

CARB = DECS Designation provided by CARB

TYPE = HUSS model # (see list below)

No. = Filter serial number provided by HUSS for record keeping and tracking. Re-Designated filter serial numbers will have an R at the end of the serial number.

YEAR = Manufactures Date / Month and Year purchased

HUSS FS- MK SYSTEM Model Numbers

Single filters: FS 40 MKS, FS 50 MKS, FS 80 MKS, FS 80 MKM, FS 80 MKL, FS 100 MKS, FS 100 MKM, FS 100 MKL, MK 35, MK 50, MK75, MK 150, MK 200, MK 300

Double filters: FS 160 MKL, FS 200 MKS*obsolete, FS 200 MKM, FS 200 MKL, MK 400, MK 600

Note: The labels that are attached to the FS-MK filter and the engine are identical.

HUSS FS-MK Filter System Replacement Label
Relating to Executive Order Series DE-06-007
Effective Date: December 22, 2011

The diagram shows a rectangular label with a black border. In the top left corner is the HUSS logo. To its right, the text reads "Diesel Particulate Filter" and "www.hussgroup.com". Below this, there are three rows of information, each in a separate box: "CARB" with the value "CA/HUS/2006/PM3+/NOO/OFF/DPF01", "TYPE" with "REPL - MK 200", and "No." with "MK0001" and "YEAR" with "July 2010". At the bottom of the label, contact information is provided: "Huss, inc. 77524 El Duna Court: Suite H", "Palm desert, CA 92211 Phone: 1-888-360-4877". To the right of the label, a vertical double-headed arrow indicates a height of 1.87". Below the label, a horizontal double-headed arrow indicates a width of 3.5".

CARB label is metal and should be displayed on the engine and the filter.

Example is for a replacement label for lost, missing or illegible tags. End user will receive replacement tags with the same NO (serial # provided by HUSS) and the same Year (Manufacture date).

CARB = DECS Designation provided by CARB

TYPE = HUSS model # (see list below)

No. = Filter serial number provided by HUSS for record keeping and tracking.

YEAR = Manufactures Date / Month and Year purchased

HUSS FS - MK System Model Numbers

Single filters: FS 40 MKS, FS 50 MKS, FS 80 MKS, FS 80 MKM, FS 80 MKL, FS 100 MKS, FS 100 MKM, FS 100 MKL, MK 35, MK 50, MK75, MK 150, MK 200, MK 300

Double filters: FS 160 MKL, FS 200 MKS*obsolete, FS 200 MKM, FS 200 MKL, MK 400, MK 600

Note: The labels that are attached to the FS-MK filter and the engine are identical.