

Attachment 3
Executive Order DE-06-007-05
Label for the HUSS FS-MK System



CARB label is metal and should be displayed on the engine and the filter.

CARB = DECS Designation provided by CARB

TYPE = HUSS model # (see list below)

No. = Filter serial number provided by HUSS for record keeping and tracking.

YEAR = Manufactures Date / Month and Year purchased

HUSS FS - MK System Model Numbers

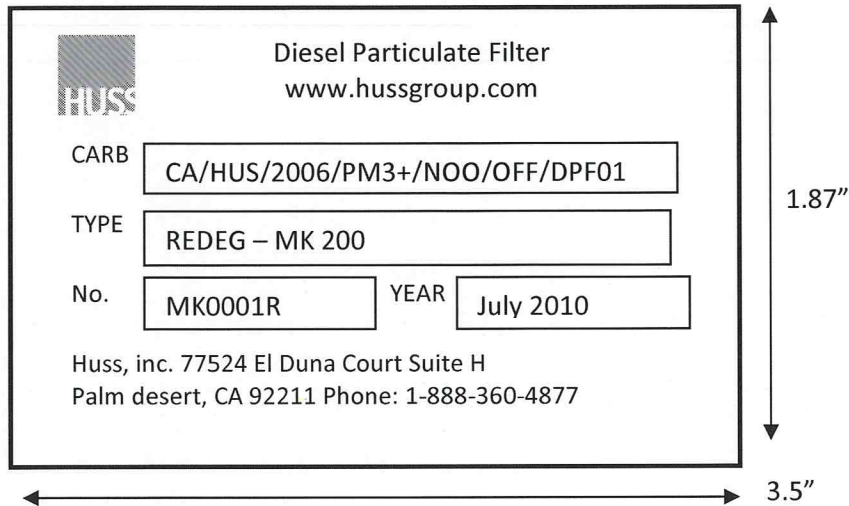
Single filters: FS 40 MKS, FS 50 MKS, FS 80 MKS, FS 80 MKM, FS 80 MKL, FS 100 MKS, FS 100 MKM, FS 100 MKL, MK 35, MK 50, MK75, MK 150, MK 200, MK 300

Double filters: FS 160 MKL, FS 200 MKS*obsolete, FS 200 MKM, FS 200 MKL, MK 400, MK 600

Note: The labels that are attached to the FS-MK filter and the engine are identical.

Attachment 3

Executive Order DE-06-007-05
HUSS FS MK System Re-Designated Label



CARB label is metal and should be displayed on the engine and the filter.

Re-Designation - Title 13, Division 3 §2706 (i) This label is only for complete filter systems that have been reviewed and approved by HUSS to be taken off of one vehicle / equipment and re-designated to a another vehicle / equipment.

A Re-designated filter will keep the original No. , with the addition of an R at the end of the serial number. The Year will also stay the same.

CARB = DECS Designation provided by CARB

TYPE = HUSS model # (see list below)

No. = Filter serial number provided by HUSS for record keeping and tracking. Re-Designated filter serial numbers will have an R at the end of the serial number.

YEAR = Manufactures Date / Month and Year purchased

HUSS FS- MK SYSTEM Model Numbers

Single filters: FS 40 MKS, FS 50 MKS, FS 80 MKS, FS 80 MKM, FS 80 MKL, FS 100 MKS, FS 100 MKM, FS 100 MKL, MK 35, MK 50, MK75, MK 150, MK 200, MK 300

Double filters: FS 160 MKL, FS 200 MKS*obsolete, FS 200 MKM, FS 200 MKL, MK 400, MK 600

Note: The labels that are attached to the FS-MK filter and the engine are identical.

Attachment 3

Executive Order DE-06-007-05
HUSS FS-MK System Replacement Label

The diagram shows a rectangular replacement label for a Diesel Particulate Filter. The label is 3.5 inches wide and 1.87 inches high. It features the HUSS logo in the top left corner. The text on the label includes: "Diesel Particulate Filter" and "www.hussgroup.com" at the top. Below this, there are three rows of information: "CARB" with the value "CA/HUS/2006/PM3+/NOO/OFF/DPF01", "TYPE" with the value "REPL - MK 200", and "No." with the value "MK0001" and "YEAR" with the value "July 2010". At the bottom of the label, the contact information for Huss, inc. is provided: "Huss, inc. 77524 El Duna Court Suite H, Palm desert, CA 92211 Phone: 1-888-360-4877".

CARB label is metal and should be displayed on the engine and the filter.

Example is for a replacement label for lost, missing or illegible tags. End user will receive replacement tags with the same NO (serial # provided by HUSS) and the same Year (Manufacture date).

CARB = DECS Designation provided by CARB

TYPE = HUSS model # (see list below)

No. = Filter serial number provided by HUSS for record keeping and tracking.

YEAR = Manufactures Date / Month and Year purchased

HUSS FS - MK System Model Numbers

Single filters: FS 40 MKS, FS 50 MKS, FS 80 MKS, FS 80 MKM, FS 80 MKL, FS 100 MKS, FS 100 MKM, FS 100 MKL, MK 35, MK 50, MK75, MK 150, MK 200, MK 300

Double filters: FS 160 MKL, FS 200 MKS*obsolete, FS 200 MKM, FS 200 MKL, MK 400, MK 600

Note: The labels that are attached to the FS-MK filter and the engine are identical.