


# California Verification Labels For Purifilter H On-road Top Level Product Label and Engine Label

**VERIFIED APPLICATIONS**

## Engine Label (foil / plastic composite)


 <span style="float: right;"><b>Engine Control Systems</b></span>	
<small>83 Commerce Valley Dr E, Thornhill, ON, CAN L3T 7T3 1-800-661-9963                  1621 Fiske Place, Oxnard, CA, USA 93033, 1-800-331-9247</small>	
<h3>Purifilter™ H</h3> <p><b>CA/ECS/2003/PM3+/N00/ON/DPF02</b></p>	
Serial #:	<input type="text" value="J"/>
Date of Manufacture: (month/year)	<input type="text"/>

Window  
area

### Notes on Engine Label

- Serial Number and Date of Mfr will be under adhesive window allowing installer to transfer information from product label- instructions will be provided in product manual

## Label - Top Level Product Label on DPF (stainless steel)

 <span style="float: right;"><small>MADE IN CANADA Engine Control Systems</small></span>	
<p><b>CA/ECS/2003/PM3+/N00/ON/DPF02</b></p>	
PRODUCT:	<input type="text" value="Purifilter™ SCXXH"/>
PART NO.:	<input type="text" value="A11U-XXXX*"/>
SERIAL NO.:	<input type="text" value="JXXXXX"/>
MFG. DATE:	<input type="text" value="MM/DD/YY"/> <input type="text" value="ZYYYYYY"/>
<small>83 Commerce Valley Dr E, Thornhill, ON, CAN L3T 7T3 1-800-661-9963                  1621 Fiske Place, Oxnard, CA, USA 93033 1-800-331-9247</small>	

**FLOW**

### \*Notes on Product Label

- Product SCXXH; XX = Purifilter H Model
- Part Number\*: If sold as a complete system, the Part Number begins with an A11U pre-fix. XXXX= numerals from 0 thru 9.
- Serial Number Pre-fix "J" on all A11U system or C19U spare filters will denote ARB warranted product if returned under warranty claim to CDTi. XXXXX= numerals from 1 thru 9
- Serial Number Pre-fix will also denote which Verification Order was applicable to product
- Serial Number also links to Date of Mfr in CDTi internal records
- ZYYYYYY represents filter lot code format and will vary in length

# California Verification Labels For Purifilter H On-road

**Verified Hwy Applications**  
**Spare Filters**

## Engine Label


(foil / plastic composite)

- Not Applicable

### Notes on Engine Label

- Not applicable for spare filters as they are used on multiple vehicles for short periods of time

Label - Top Level Product  
Label on DPF  
(stainless steel)

		MADE IN CANADA	
		Engine Control Systems	
<b>CA/ECS/2003/PM3+/N00/ON/DPF02</b>			
PRODUCT:	Purifilter™ SCXXH		
PART NO.:	C19U-XXXX*		
SERIAL NO.:	JXXXXX	S	↑ FLOW ← Note
MFG. DATE:	MM/DD/YY	ZYYYYYY	
<small>83 Commerce Valley Dr E, Thornhill, ON, CAN L3T 7T3 1-800-661-9963 1621 Fiske Place, Oxnard, CA, USA 93033 1-800-331-9247</small>			

### \*Notes on Product Label

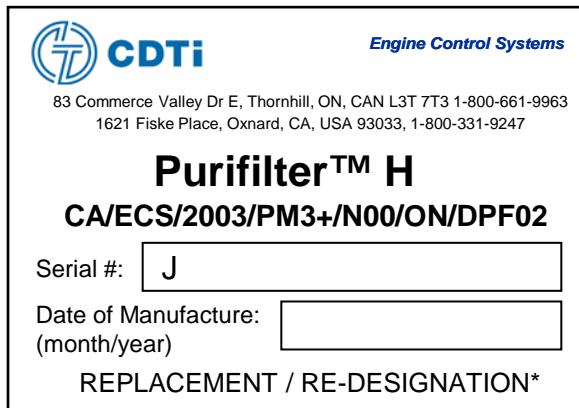
- Product SCXX H; XX = Purifilter Model / Filter Size
- Part Number\*: If sold as a spare centerbody, it would have a C19U pre-fix in the part number. XXXX= numerals from 0 thru 9.
- Serial Number Pre-fix "J" on all A11U system or C19U spare or replacement filters will denote ARB warranted product if returned under warranty claim to CDTi. XXXXX= numerals from 1 thru 9
- **NOTE: S represents a spare appears only if applicable**
- Serial Number Pre-fix will also denote which Verification Order was applicable to product
- Serial Number also links to Date of Mfr in CDTi internal records
- ZYYYYYY represents filter lot code format and will vary in length

# California Verification Labels For Purifilter H On-road

**Verified Hwy Applications**  
**Warranty Replacement**  
**Filters & Engine Labels**

## Engine Label

(foil / plastic composite)

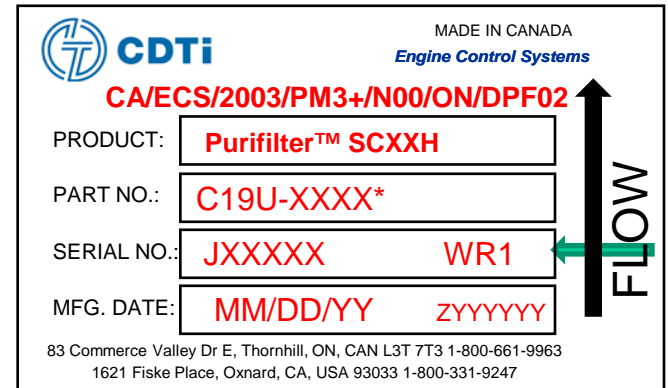


Window  
 area

### Notes on Engine Label

- Serial Number and Date of Mfr will be under adhesive window allowing installer to transfer information from product label- instructions will be provided in product manual
- \* REPLACEMENT / RE-DESIGNATION appears at bottom of label if applicable (REPLACEMENT = replacement label)

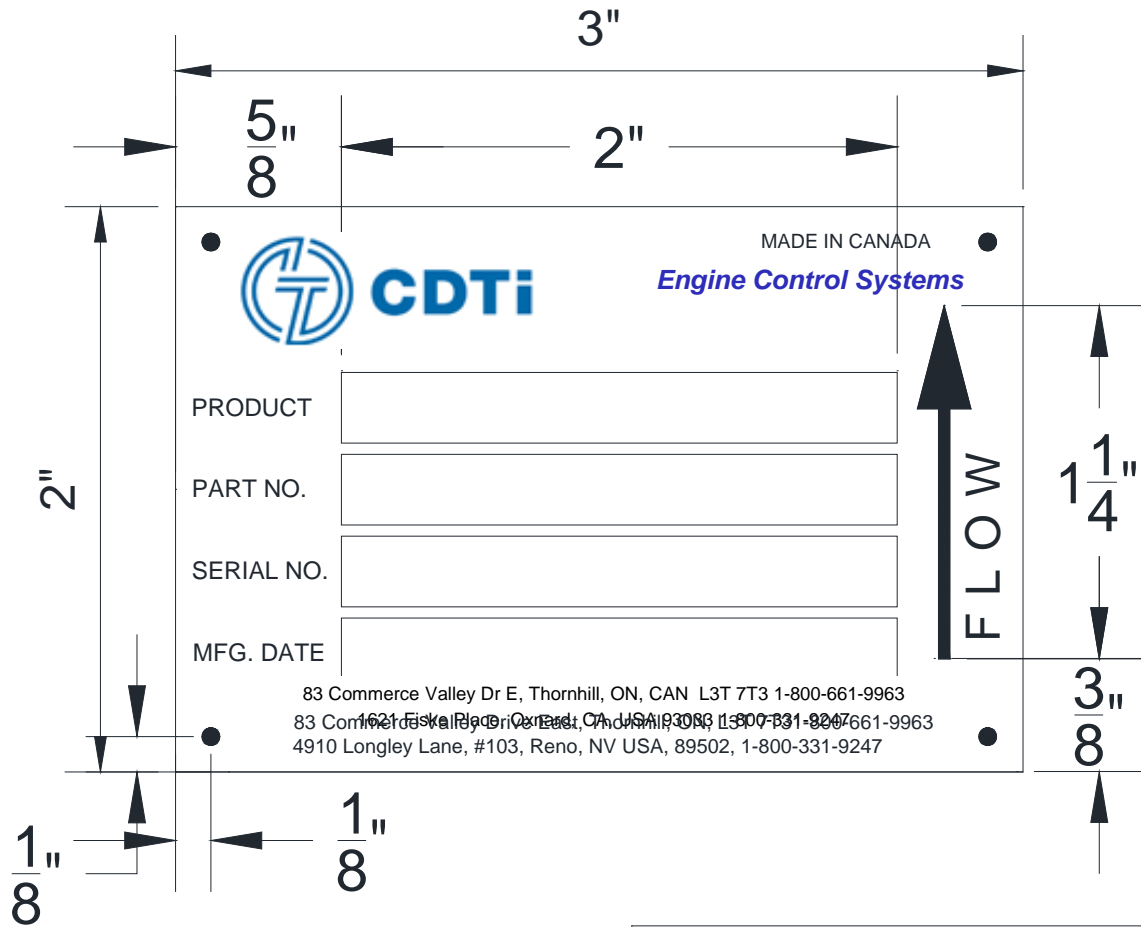
Label - Top Level Product  
 Label on DPF  
 (stainless steel)



### \*Notes on Product Label

- Product SCXXH; XX = Purifilter Model / Filter Size
- Part Number\*: If sold as a spare centerbody, it would have a C19U pre-fix in the part number. XXXX= numeral from 0 thru 9.
- Serial Number Pre-fix "J" on all A11U system or C19U spare or replacement filters will denote ARB warranted product if returned under warranty claim to CDTi. XXXXX= numerals from 1 thru 9
- **NOTE: WR1 represents a filter replaced under warranty- appears only if applicable**
- Serial Number Pre-fix will also denote which Verification Order was applicable to product
- Serial Number also links to Date of Mfr in CDTi internal records
- ZYYYYYY represents filter lot code format and will vary in length

**Labels for CDTi (Engine Control Systems) Purifilter H System  
Relating to Executive Order Series DE-04-002  
Effective Date: December 16, 2013**



ENGINE CONTROL SYSTEM			
THIS DRAWING CONTAINS CONFIDENTIAL INFORMATION AND IS THE EXCLUSIVE PROPERTY OF ENGINE CONTROL SYSTEMS LTD (ECS). NEITHER THE DOCUMENT NOR ITS CONTENTS ARE TO BE DISCLOSED TO A THIRD PARTY IN ANY WAY WITHOUT PRIOR WRITTEN PERMISSION OF ECS.	CHK'D	APPR'D	PART DESCRIPTION
	CUSTOMER DWG NO.	REV.	ECS DOC/DPF PRODUCT LABEL
	ORIGINAL MUFFLER NO.		SCALE:
	JIG NO.		DRAWN: M. RIAHI
PROJECTION	TOLERANCE (UNLESS OTHERWISE STATED)		DATE: 31-MAY-12
	FRACTIONAL ± 1/32	ANGLES ±	MATERIAL:
	DECIMAL .XX ± XXX	.XXX ± .010	SHEET: 1 of 1
			REV. C
			PART NO. J26-0059

# Confidential Business Information

Labels for CDTi (Engine Control Systems) Purifier H System  
Relating to Executive Order Series DE-04-002  
Effective Date: December 16, 2013

## CDTi BPM Labeling



Standard Alarm Settings

Yellow: 150 mbars

Red: 200 mbars