



The Governors' Climate and Forests Task Force (GCF)

ARB Public Workshop to Discuss Potential for International Sector-Based Offset Credits in California's Cap-and-Trade Program

Colleen Scanlan Lyons, PhD
Project Director
GCF Secretariat



www.gcftaskforce.org

BRAZIL Acre, Amapá, Amazonas, Mato Grosso, Pará, Rondônia, Tocantins

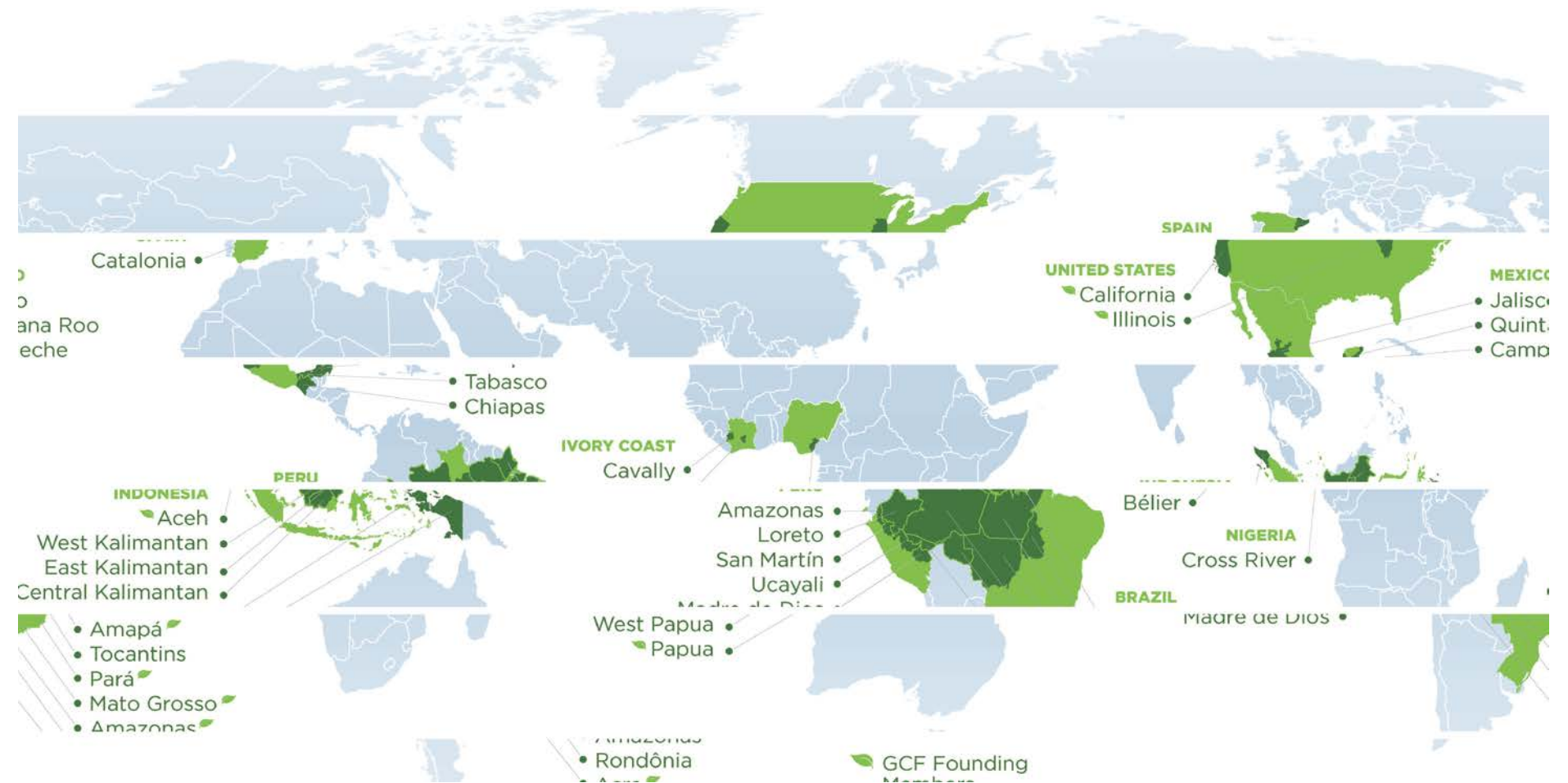
INDONESIA Aceh, Central Kalimantan, East Kalimantan, Papua, West Kalimantan, West Papua | **IVORY COAST** Béliér, Cavally

MEXICO Campeche, Chiapas, Jalisco, Tabasco, Quintana Roo | **NIGERIA** Cross River State

PERU Amazonas, Loreto, Madre de Dios, San Martín, Ucayali | **SPAIN** Catalonia | **USA** California, Illinois



The Governors' Climate and Forests Task Force (GCF)



www.gcftaskforce.org

BRAZIL Acre, Amapá, Amazonas, Mato Grosso, Pará, Rondônia, Tocantins

INDONESIA Aceh, Central Kalimantan, East Kalimantan, Papua, West Kalimantan, West Papua | **IVORY COAST** Bélier, Cavally

MEXICO Campeche, Chiapas, Jalisco, Tabasco, Quintana Roo | **NIGERIA** Cross River State

PERU Amazonas, Loreto, Madre de Dios, San Martín, Ucayali | **SPAIN** Catalonia | **USA** California, Illinois



GCF: Background & Status

- 2009 - 10 states & provinces, 3 countries
- 2015 - 29 states & provinces, 8 countries
- 25%+ of world's tropical forests in GCF
- 75%+ of Brazil's and Peru's tropical forests
- 50%+ of Indonesia's tropical forests
- Early movers in jurisdictional programs to reduce emissions from deforestation & land use
- Potentially first GHG compliance market to recognize emissions reductions from jurisdictional programs (CA)



www.gcftaskforce.org

BRAZIL Acre, Amapá, Amazonas, Mato Grosso, Pará, Rondônia, Tocantins

INDONESIA Aceh, Central Kalimantan, East Kalimantan, Papua, West Kalimantan, West Papua | **IVORY COAST** Béliér, Cavally

MEXICO Campeche, Chiapas, Jalisco, Tabasco, Quintana Roo | **NIGERIA** Cross River State

PERU Amazonas, Loreto, Madre de Dios, San Martín, Ucayali | **SPAIN** Catalonia | **USA** California, Illinois



Political Engagement: Rio Branco Declaration & Under 2 MOU

- Reduce deforestation 80% by 2020 (pending adequate long-term financing available)
- Substantial share of benefits to indigenous peoples & traditional communities
- Partnerships with indigenous organizations & with sustainable supply chain actors



Photo Credit: Joe McElroy, California Highway Patrol



www.gcftaskforce.org

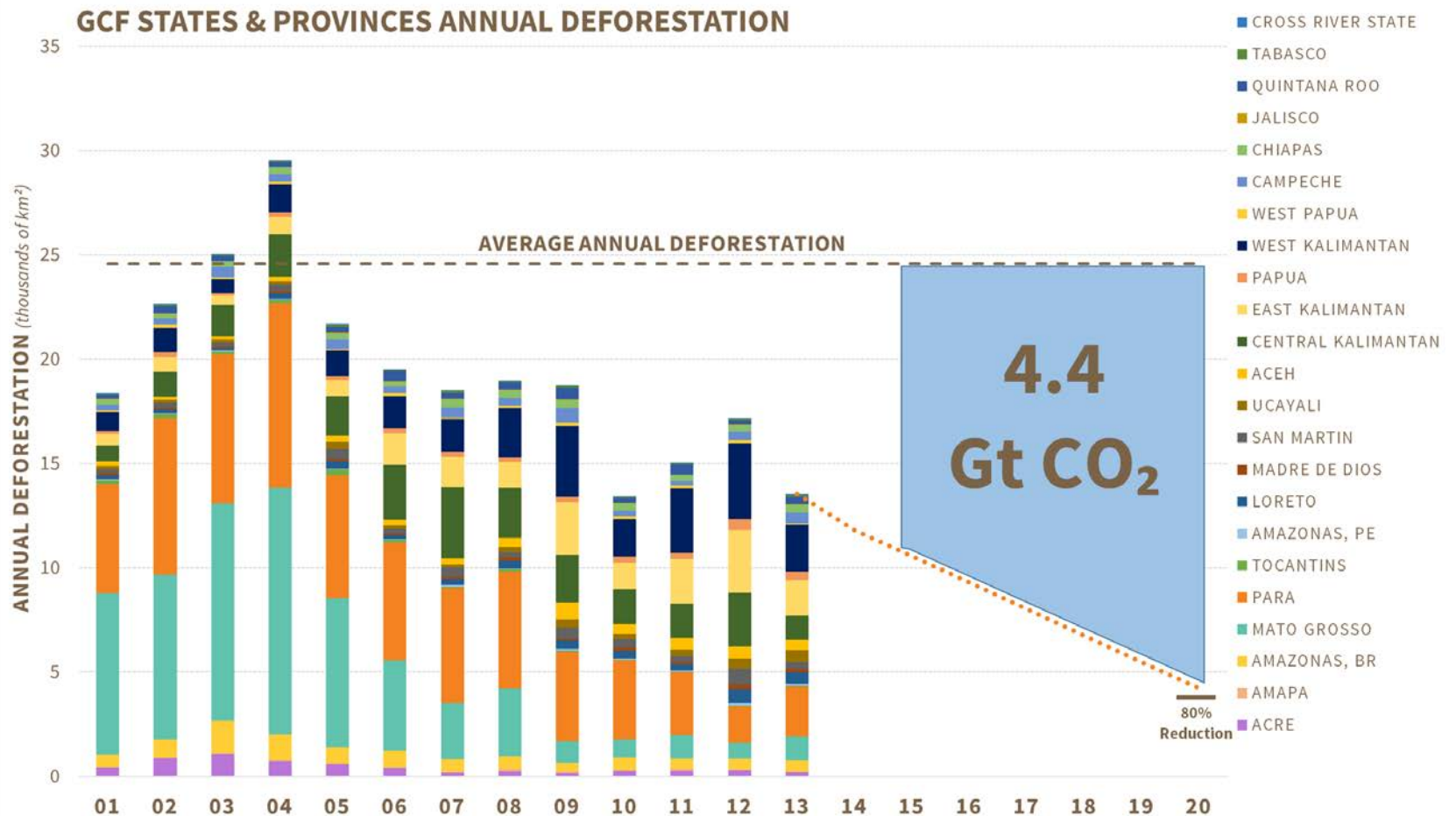
BRAZIL Acre, Amapá, Amazonas, Mato Grosso, Pará, Rondônia, Tocantins

INDONESIA Aceh, Central Kalimantan, East Kalimantan, Papua, West Kalimantan, West Papua | **IVORY COAST** Béliér, Cavally

MEXICO Campeche, Chiapas, Jalisco, Tabasco, Quintana Roo | **NIGERIA** Cross River State

PERU Amazonas, Loreto, Madre de Dios, San Martín, Ucayali | **SPAIN** Catalonia | **USA** California, Illinois

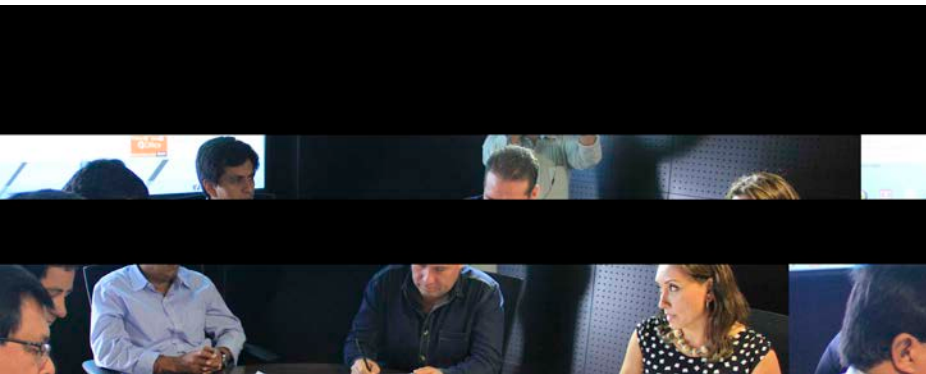
Rio Branco Declaration: 80% Reduction in Deforestation



Credit: Earth Innovation Institute



GCF Network of Relationships



www.gcftaskforce.org

BRAZIL Acre, Amapá, Amazonas, Mato Grosso, Pará, Rondônia, Tocantins

INDONESIA Aceh, Central Kalimantan, East Kalimantan, Papua, West Kalimantan, West Papua | **IVORY COAST** Béliér, Cavally

MEXICO Campeche, Chiapas, Jalisco, Tabasco, Quintana Roo | **NIGERIA** Cross River State

PERU Amazonas, Loreto, Madre de Dios, San Martín, Ucayali | **SPAIN** Catalonia | **USA** California, Illinois



GCF Members: Mexico



www.gcftaskforce.org

BRAZIL Acre, Amapá, Amazonas, Mato Grosso, Pará, Rondônia, Tocantins

INDONESIA Aceh, Central Kalimantan, East Kalimantan, Papua, West Kalimantan, West Papua | **IVORY COAST** Bélié, Cavally

MEXICO Campeche, Chiapas, Jalisco, Tabasco, Quintana Roo | **NIGERIA** Cross River State

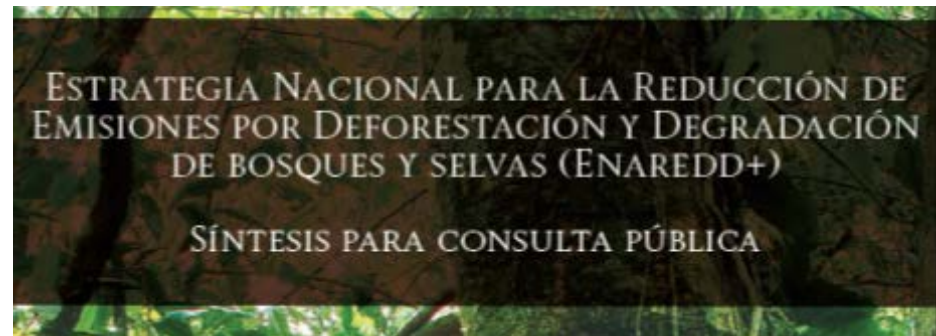
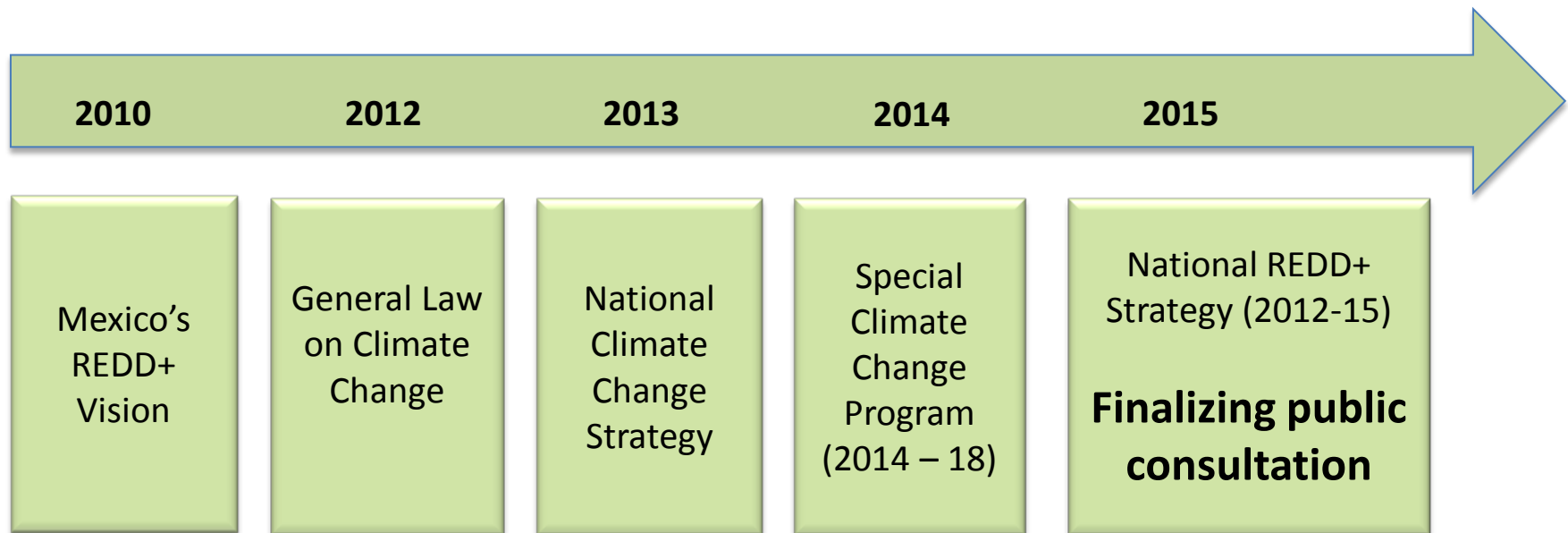
PERU Amazonas, Loreto, Madre de Dios, San Martín, Ucayali | **SPAIN** Catalonia | **USA** California, Illinois

Towards jurisdictional REDD+ in Mexico.

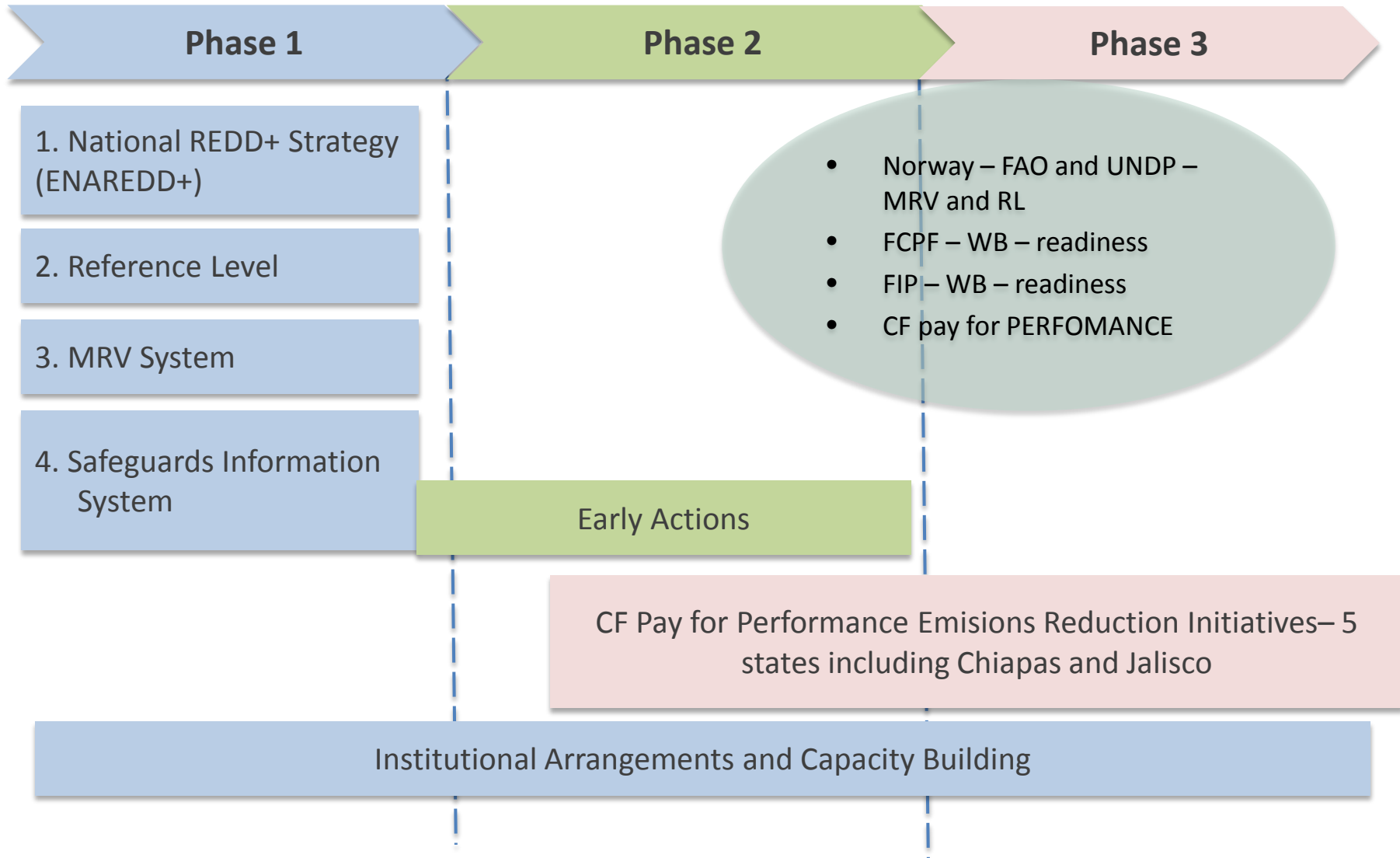
Case studies from Chiapas and Jalisco.

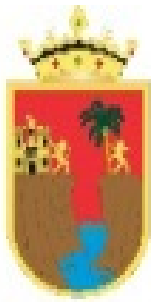


Mexico's recent climate regulatory framework



REDD+ Readiness and implementation





GOBIERNO DEL
ESTADO DE CHIAPAS

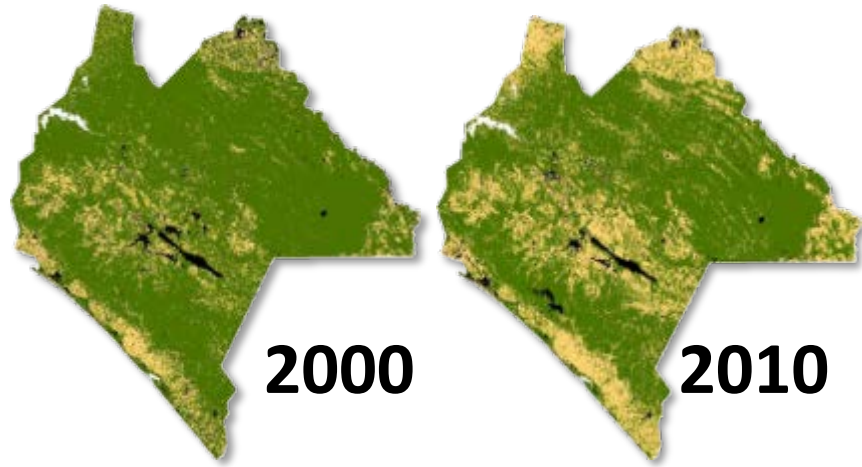
SECRETARÍA
DE MEDIO AMBIENTE
E HISTORIA NATURAL

JURISDICCIONAL REDD+ PROCESS IN CHIAPAS

M. en C. Ricardo Hernández Sánchez
Ministry of Environment and Natural History
Undersecretary of Forestry Development
State Government of Chiapas

SACRAMENTO, CALIFORNIA

28, OCTOBER, 2015



8th largest state - surface of 74,415 km² (1/2 of Acre, 1/5th CA)

Population: 4,796,580, 52. (1/8th of California, 7 times Acre), 2.2% annual growth (2005-2010).

Rich cultural diversity: 12 / 62 indigenous groups that exist in Mexico live in Chiapas.

30% of Mexico's superficial water , 54% of hydroelectric energy

Vegetation types: include cloud forest, temperate forest, natural and induced pasture, humid rainforest and sub humid rainforest.

Biodiversity: More than 205 mammal species, 565 bird species, 224 reptile species, 117 amphibious species and more than 1,200 butterfly species are found here.



Reducing emissions from land use change in Chiapas



- Law on climate change mitigation and adaptation law of Chiapas.
- Law of sustainable forest development of Chiapas



GCF member, Rio Branco Declaration



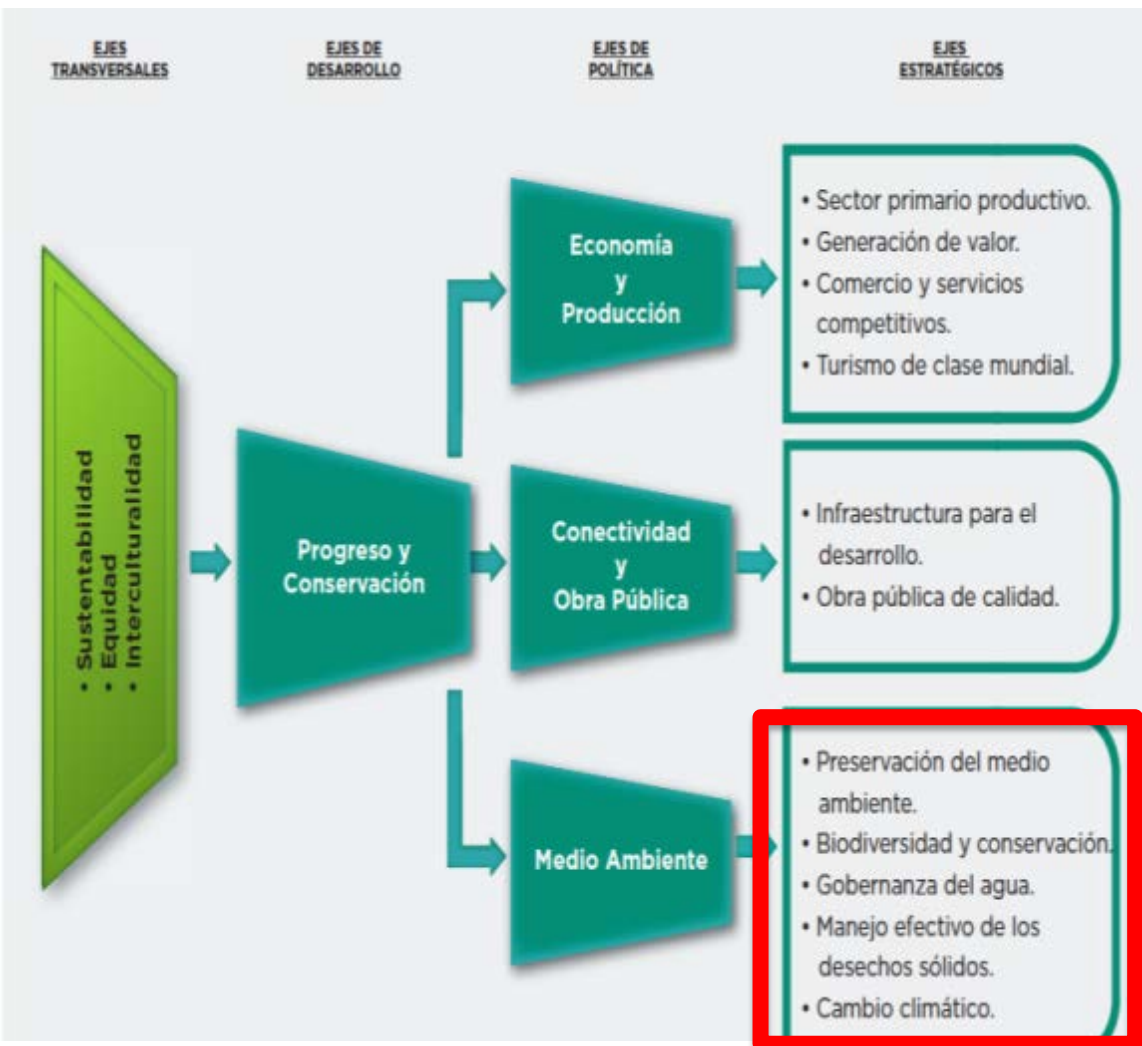
UNDER 2 MOU Barcelona



Forest restoration target

Mitigation as a high priority

Sustainable Chiapas, Government Plan 2013-2018



4.2.6 Policy: CC mitigation and adapataion

Environement, climate change and forests are high level issues within the state's development agenda.

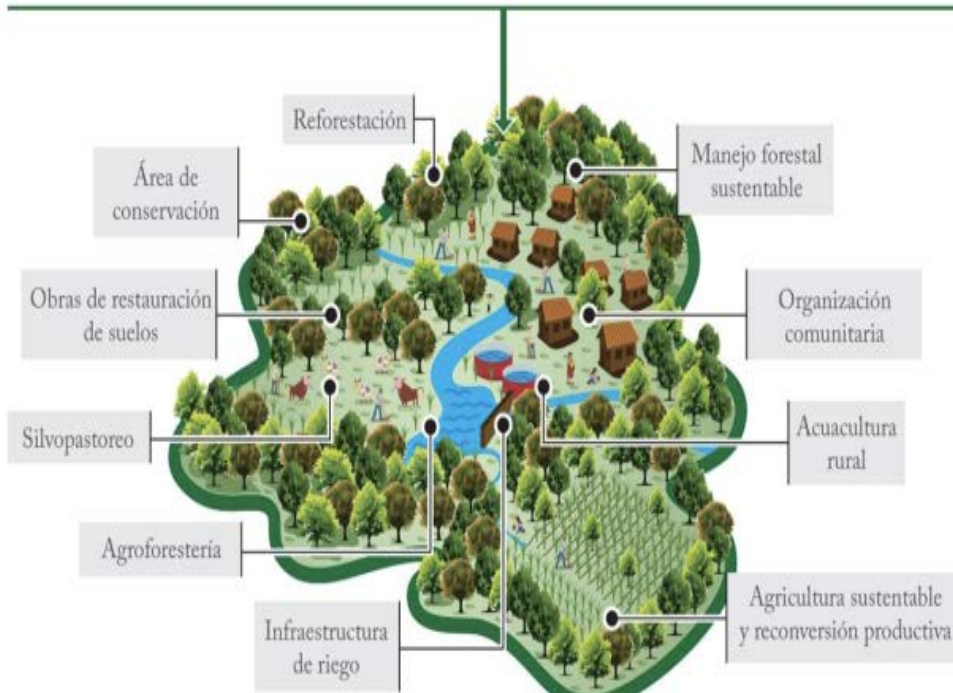
Big opportunity to work with other GCF states like CA to develop inovative ways to deal with deforestation drivers.

Implementation model in Chiapas



MANEJO INTEGRADO DEL TERRITORIO

SEMARNAT CONAFOR SAGARPA SEDESOL SEDATU SCT SEP SE SENER SECTUR SEGOB Gobierno estatal Gobierno municipal



Stakeholders

CTC REDD for Chiapas

MRV (Academy, NGOs, local communities)

Safeguards (Academy, ONGs, Producers and local communities)





Social context

GOBIERNO DEL
ESTADO DE CHIAPAS

SECRETARÍA
DE MEDIO AMBIENTE
E HISTORIA NATURAL

- **In Chiapas we are protecting community resources and traditional ways of life**
- **We have participated in the process to develop government programs to reduce emissions**
- **And the rights have been respected**
- 53% of the national territory is collectively owned through ejidos o bienes comunales. One of the largest areas of socially owned territory is the Lacandona forest, covering 498,792 hectares.
- Land and resources disputes are usually resolved at ejido assemblies, the community's Consejo de Vigilancia, the Comisariado de Bienes Comunales, at the general assembly, or eventually at the Agrarian Courtl.



Process towards jurisdictional REDD+ in Jalisco.

Planning instruments and international agreements



Objetives included in the State Development Plan (2013-2033).

- Develop a state REDD strategy.
- Increase carbon stocks.
- Promote low emission rural development.



Climate Action State Law (passed in may 2015).

- Stop deforestation and degradation of rural and urban ecosystems.
- Adopt sustainable practices in agriculture, forestry and silviculture to reduce climate change risks and impacts.



Subnational Global Climate Leadership, Under 2 MOU.

- Reduction of per-capita emissions from 5 to 2 Ton CO₂/year (2050).
- Coordination and cooperation between signatories.
- Share financial innovative models (international carbon markets).



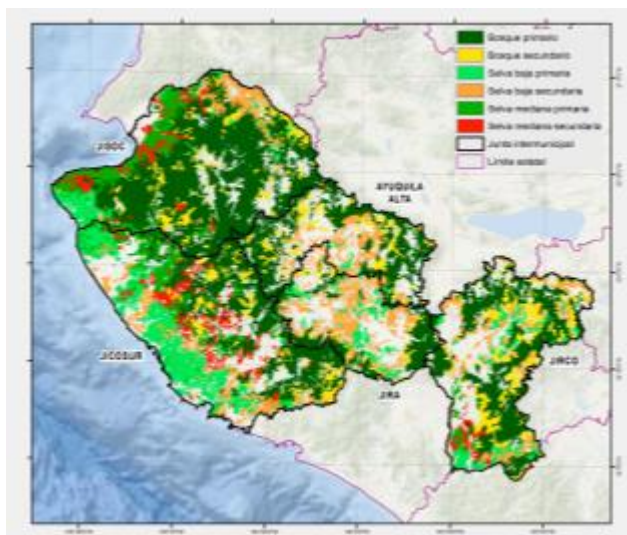
GCF

Jalisco joins in 2014.

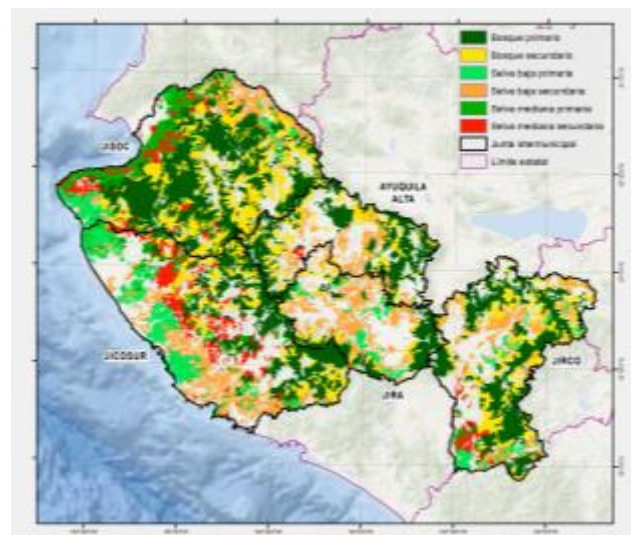
President of GCF for period 2015.

Land use change in costal area in Jalisco (1993-2012)

Forest surface 1993



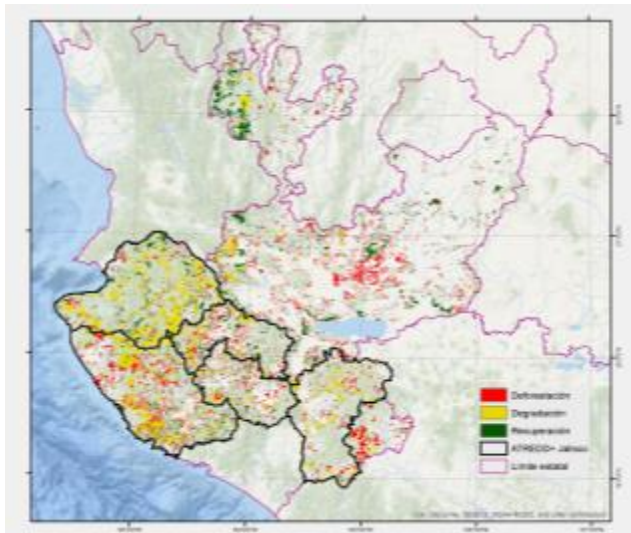
Forest surface 2012



Tipo de Vegetación	Superficie total (ha)		Deforestación superficie total ha	Degradación forestal superficie total ha
	1993	2012		
Bosque primario	1,201,235	914,923	57,464	276,056
Bosque secundario	279,222	513,128	36,966	
Selva baja primaria	314,674	205,252	32,106	91,116
Selva baja secundaria	341,008	402,457	64,855	
Selva mediana primaria	193,548	128,319	17,844	62,577
Selva mediana secundaria	134,531	158,984	31,675	
TOTAL	2,466,211	2,325,075	240,910	429,749

Implementation model.

- ✓ EAREDD+ are implemented in 45 municipalities, with a surface of around 3.3 millions Ha (43% of the state's surface).
- ✓ Intermunicipal governance model with 4 organisms installed:
 - Junta Intermunicipal de Medio Ambiente para la Gestión Integral de la Cuenca Baja del Río Ayuquila (JIRA).
 - Junta Intermunicipal del Río Coahuayana (JIRCO).
 - Junta Intermunicipal Sierra Occidental-Costa (JISOC).
 - Junta Intermunicipal de la Costa Sur (JICOSUR).
- ✓ This model is being replicated in other parts of the state.



- ✓ Inter-municipalities actions:
 - a) Communication and outreach workshops related to climate change and REDD+.
 - b) Capacity building for land owners.
 - c) Institutional agreements between three government levels.
 - d) Preparation of reduction emission initiatives.
 - e) Citizen participation through community councils.
 - f) Participation in MRV working group.

Monica Diaz

Climate Change Director

Jalisco State Government

monica.lopez@jalisco.gob.mx

Big opportunity to work with California and other governments to reduce global emissions, from energy to transportation to forests and land use



¡Gracias!



GCF Members: Brazil



www.gcftaskforce.org

BRAZIL Acre, Amapá, Amazonas, Mato Grosso, Pará, Rondônia, Tocantins

INDONESIA Aceh, Central Kalimantan, East Kalimantan, Papua, West Kalimantan, West Papua | **IVORY COAST** Béliér, Cavally

MEXICO Campeche, Chiapas, Jalisco, Tabasco, Quintana Roo | **NIGERIA** Cross River State

PERU Amazonas, Loreto, Madre de Dios, San Martín, Ucayali | **SPAIN** Catalonia | **USA** California, Illinois

REDD + SYSTEM OF MATO GROSSO

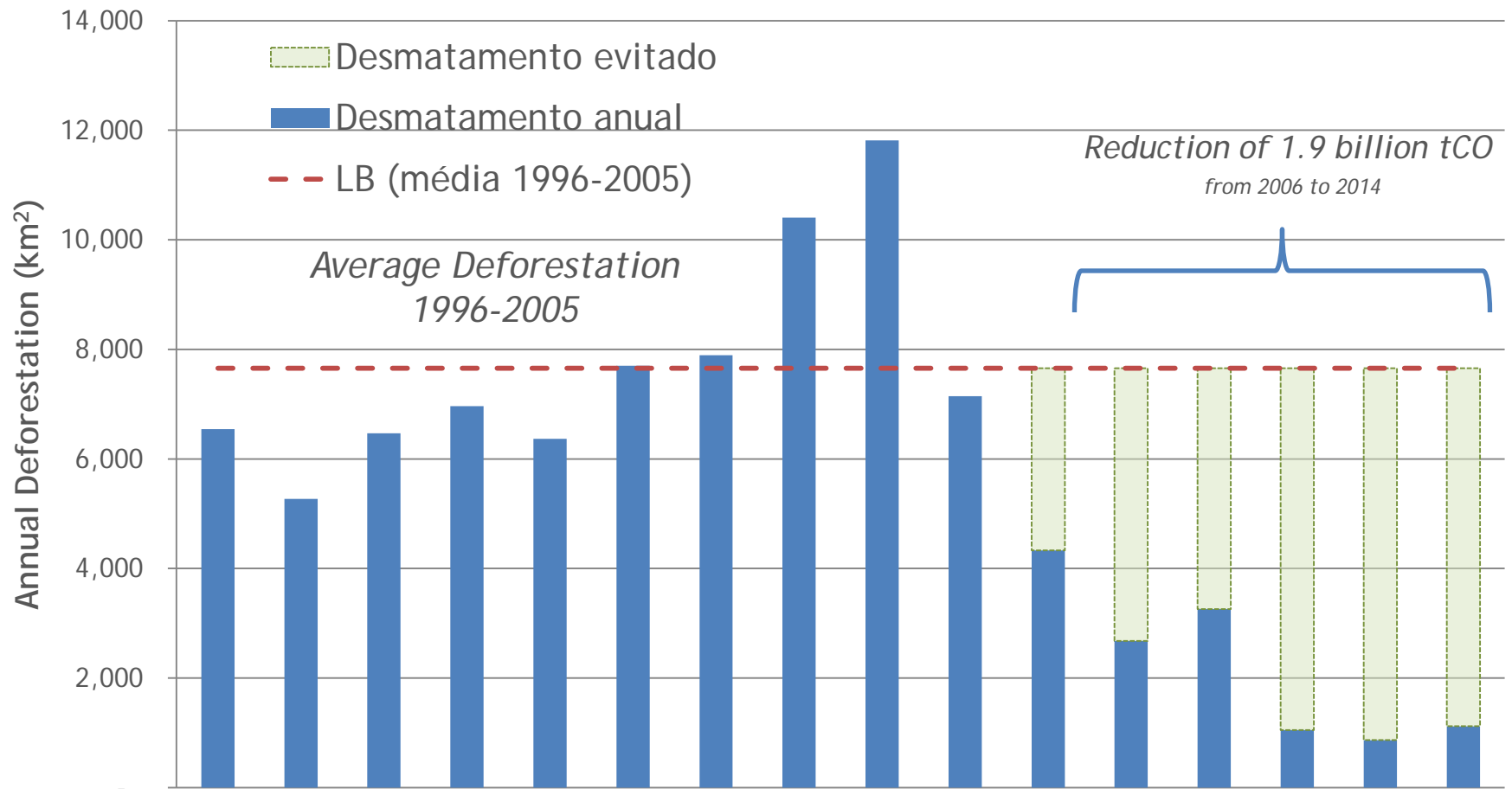
Sacramento, 28th October 2015

SEMA
ENVIRONMENTAL
STATE
AGENCY



GOVERNMENT OF
MATO GROSSO
STATE OF TRANSFORMATION

Reduction of 1.9 billion tCO₂ , from 2006 to 2014



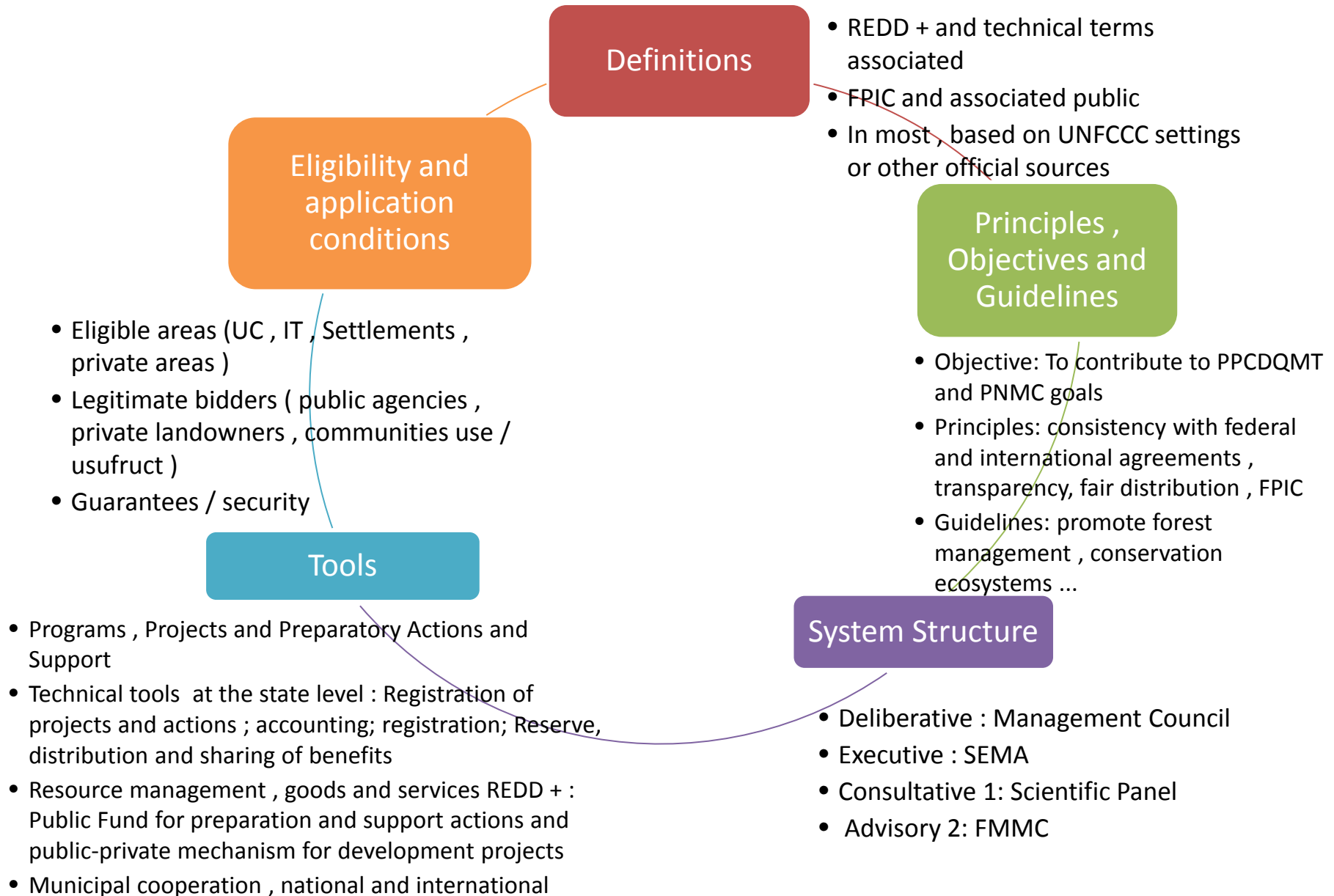
Act 9.878/2013 – Creates the REDD + System of Mato Grosso

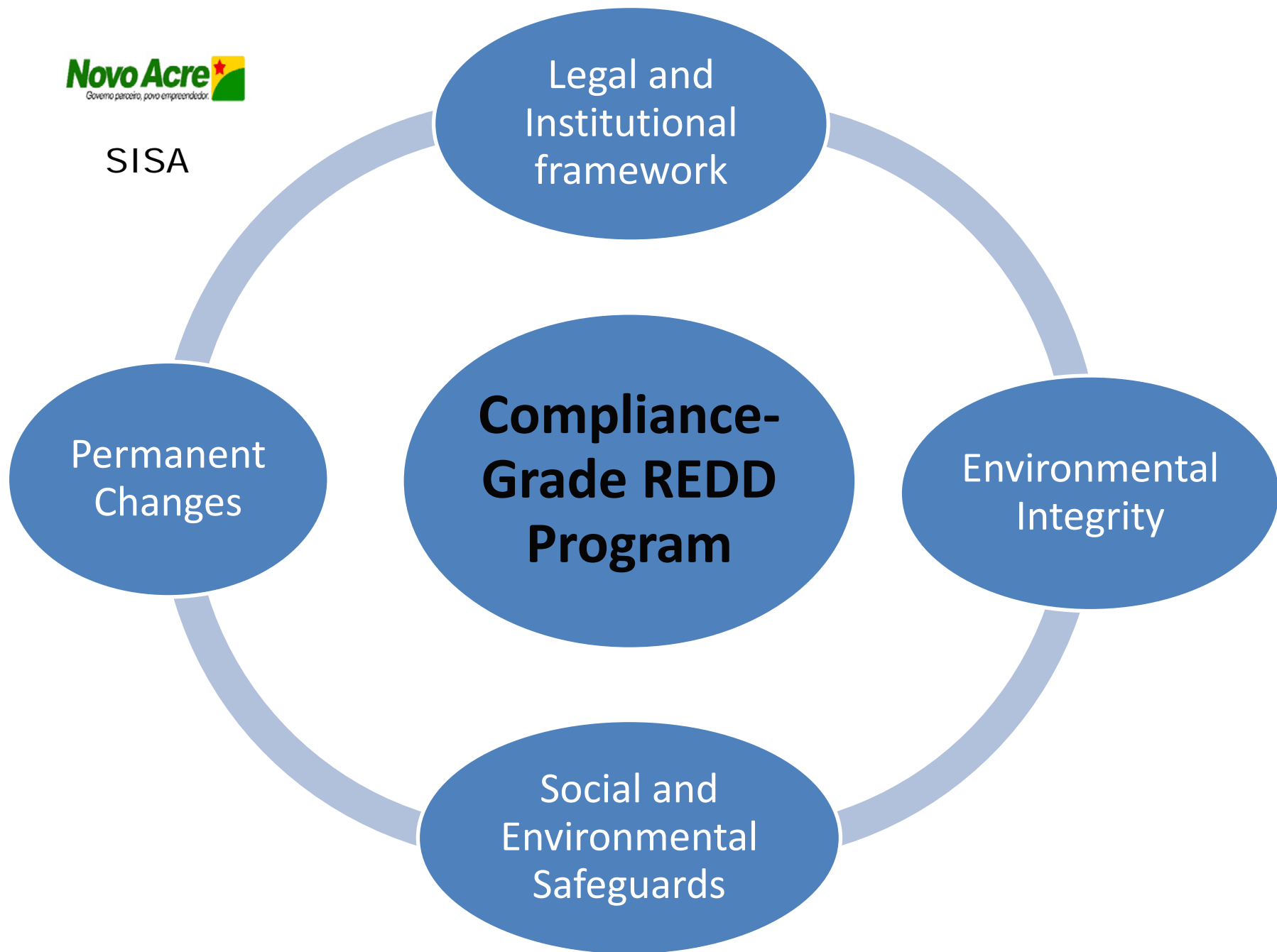
- Set up under the Mato Grosso Forum for Climate Change
- Participatory development (176 contributions)
- All UNFCCC established Safeguards are included in the Act, including free, prior and informed

Ongoing actions

- The GCF Fund finances the Carbon Calculator (MRV)
- Construction of the Legal Program (VCS requirements)
- State Standard for creating study (support GCF)
- Complete the Safeguards Information System
- Organizing inclusion strategies for I.P .and Traditional Communities

REDD + System Structure





Thank You!

rodrigo.neves@ac.gov.br

marcus.oliveira@embrapa.br



The role of indigenous territories in mitigating the climate crisis

Actions and proposals from Indigenous People in the Amazon

COICA

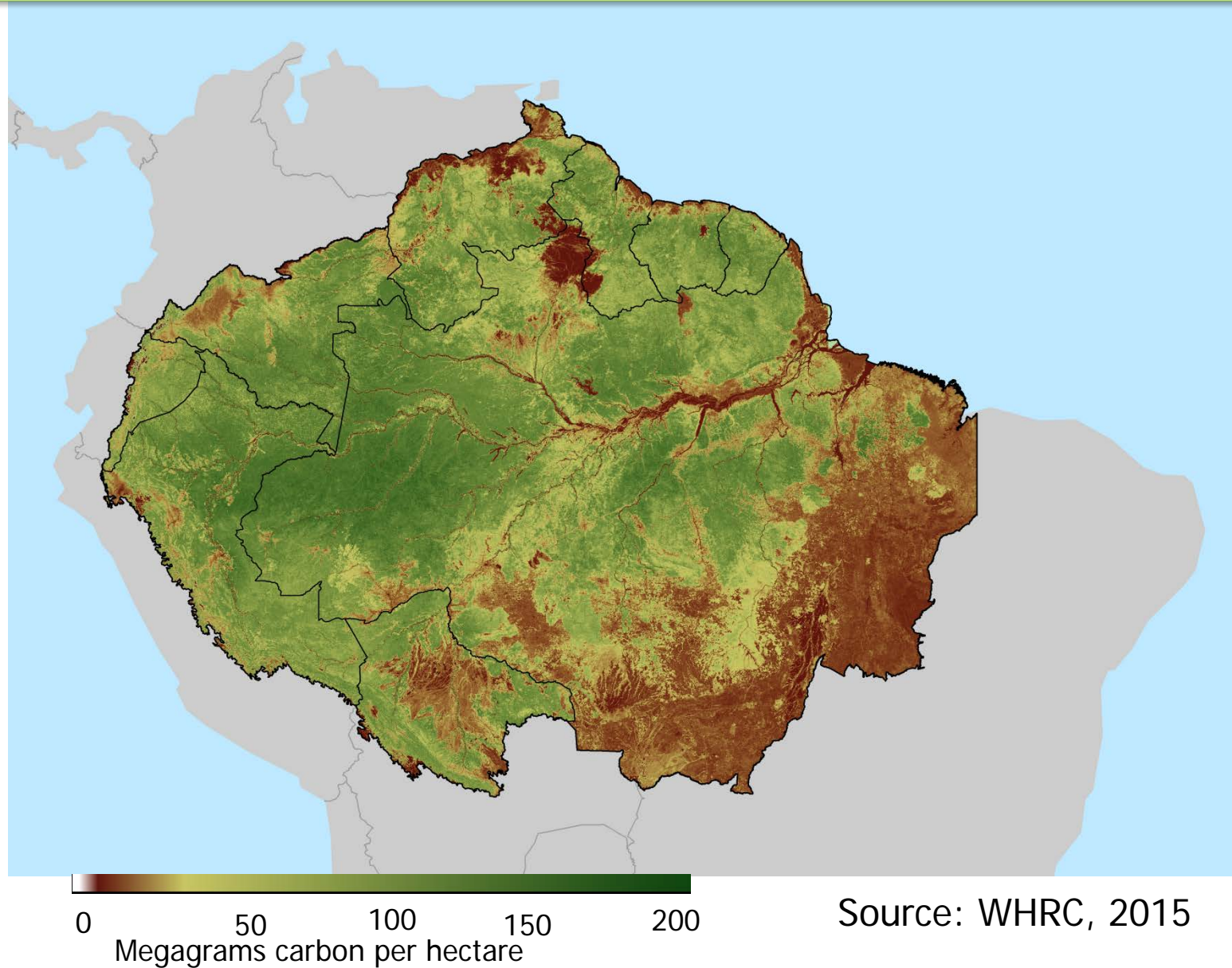
Teléfono: + 593-322-6744
E-mail: info@coica.org.ec
www.coica.org.ec

www.coica.org.ec

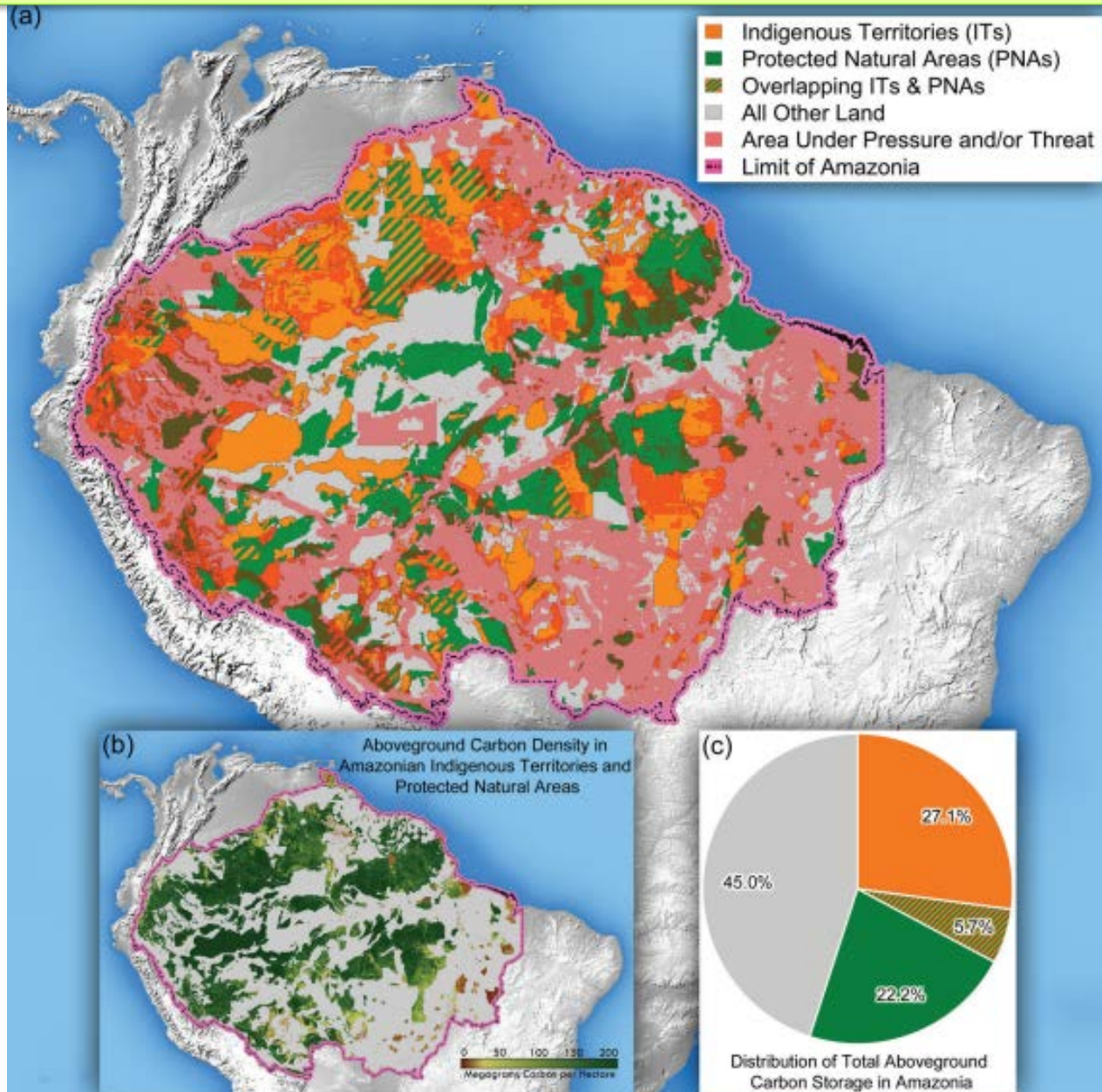
COICA: 390 Peoples * 5,000 communities * 400 organizations * 09 confederations * 2.5 million habitants



Forest Biomass in the Amazon



Amazon Forest Carbon at Risk



Indigenous Amazonia

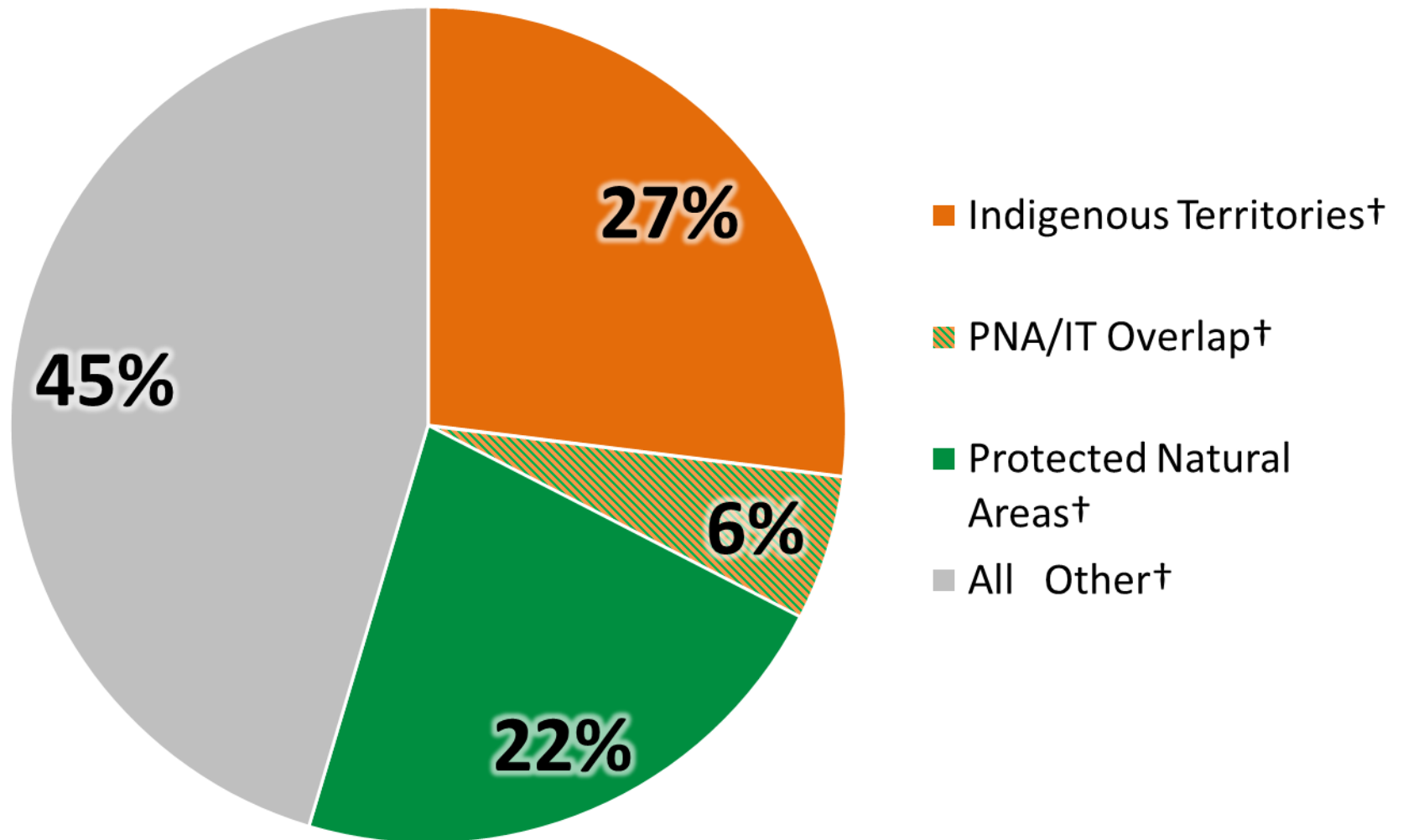
IP control 240 million ha * 28,247 million metric tones of carbon

32.7% of the total stocks of forest carbon in Amazonia are in IT
> than Indonesia

= to all global emissions of CO₂ of 2010, 2011 and 2012

Importance for climate change mitigation & water resources

Forest Carbon Stock in the Amazon



Source: WHRC, 2015



Rights and territories

COICA actions

- ✓ FPIC
- ✓ Supporting the entitlement of indigenous territories and indigenous REDD+ rights
- ✓ Stopping persecution of indigenous leaders



2. COICA proposals - COP21 and climate change negotiations

- ✓ Ensuring IP rights and implementation of the ILO Convention No. 169 and UNDRIP
- ✓ Indigenous REDD+
- ✓ Including environmental services & IP adaptation plans (TK)
- ✓ Changing the development model – *Vida plena*
- ✓ Enhancing the role of indigenous women



3. New climate finance proposals

- ✓ Financing focused on IPs (FIP, UN-REDD)
- ✓ Amazon Indigenous Fund (FIA) - direct access to IP org.
- ✓ Indigenous MRV
- ✓ Effective access to existing funds (GCF and Amazon Fund)
- ✓ Dedicated mechanism – Peru: ex. of IP governance



Objectives

- ✓ Entitlement of 100 million ha of indigenous lands which are not recognized yet
- ✓ Holistic management of our territories
- ✓ Maintaining 96,000 million tons of CO₂ stocks and avoiding their emissions
- ✓ Enhancing territorial governance

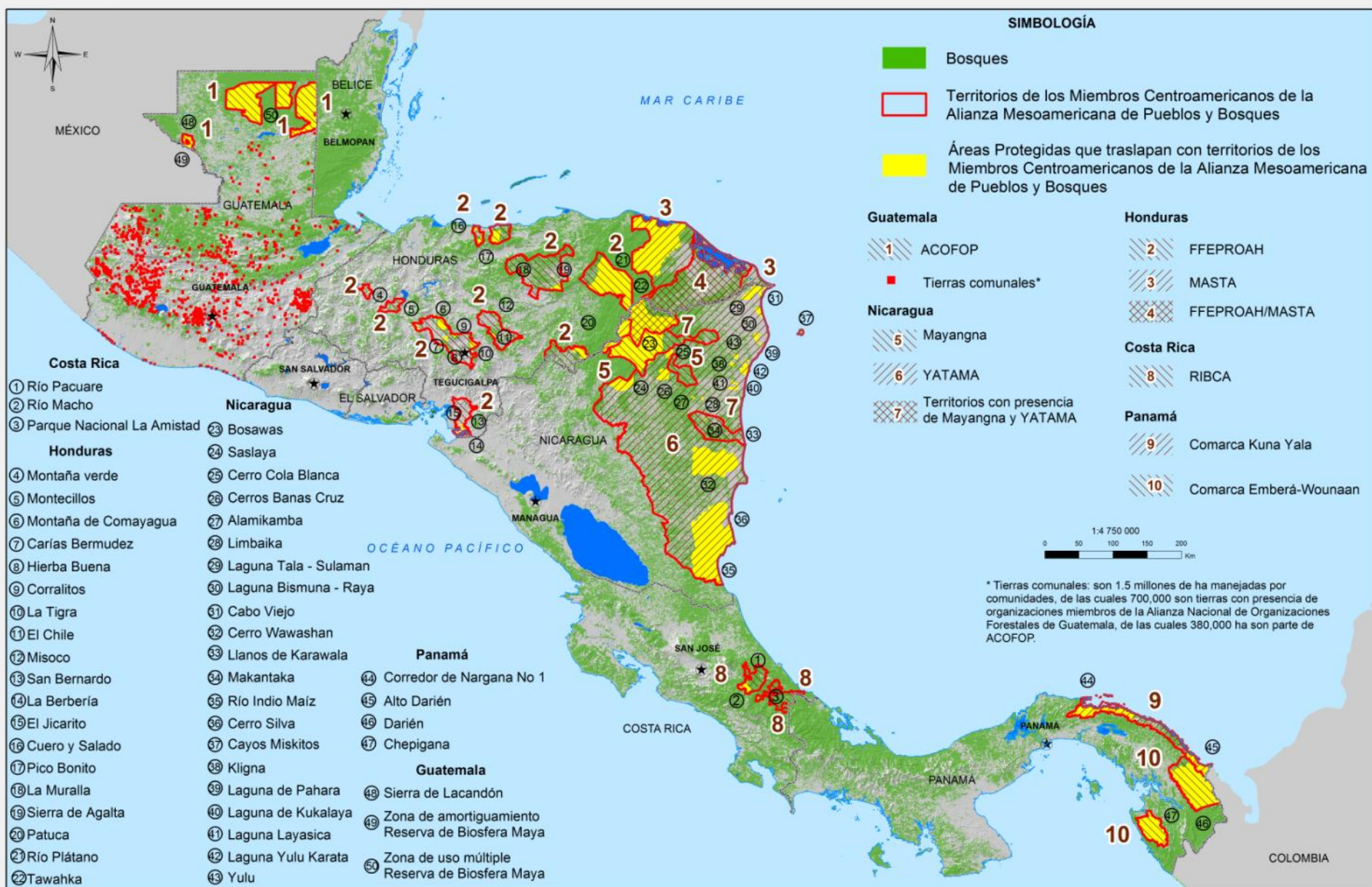


www.flickr.com/photos/powless



Thank you!
Edwin Vásquez, Coordinador General

AMPB

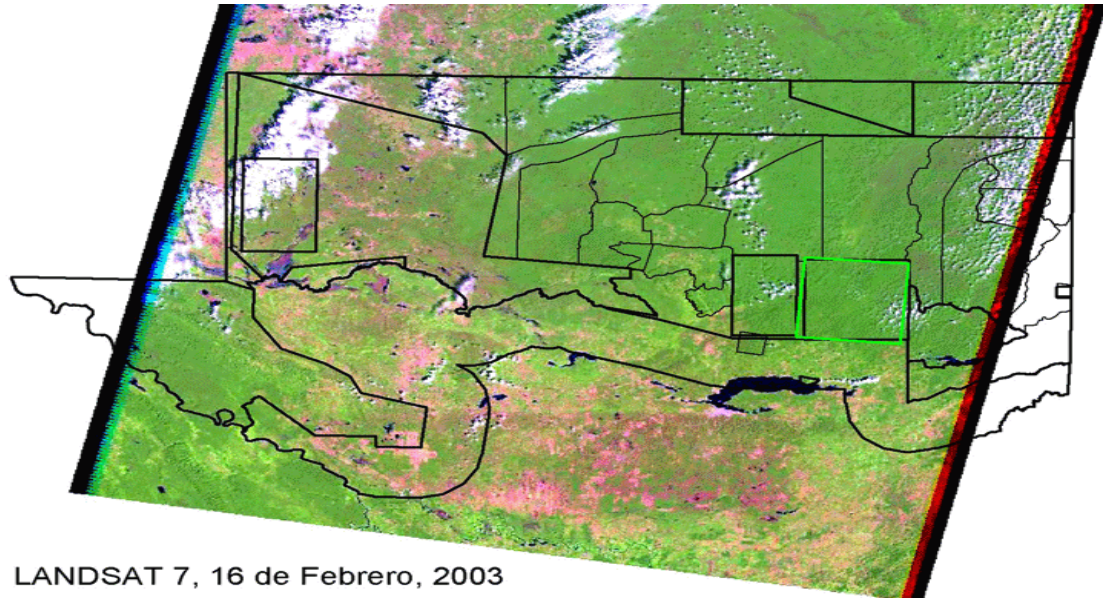


Gobernanza

Caso Peten:



GUATECARBON
Reserva de la Biosfera Maya



LANDSAT 7, 16 de Febrero, 2003

ACOFOP:

22 organizaciones comunitarias

Concesiones Forestales con contratos de 25 años de usufructo

706 mil hectáreas.

Contexto de la Reserva Biosfera Maya

Contiene el 80% de los bosques de Guatemala

Protección de los bosques, Caso: Comarca Embera Wounaan



Preparándonos para el monitoreo y vigilancia territorial y de los bosques





Thank you
Gracias
Obrigado



www.gcftaskforce.org

BRAZIL Acre, Amapá, Amazonas, Mato Grosso, Pará, Rondônia, Tocantins

INDONESIA Aceh, Central Kalimantan, East Kalimantan, Papua, West Kalimantan, West Papua | **IVORY COAST** Béliér, Cavally

MEXICO Campeche, Chiapas, Jalisco, Tabasco, Quintana Roo | **NIGERIA** Cross River State

PERU Amazonas, Loreto, Madre de Dios, San Martín, Ucayali | **SPAIN** Catalonia | **USA** California, Illinois