

Considering Map of Tribal Land Ownership: CARB Discussion with California Native American Tribes



NATURAL AND WORKING LANDS

OCTOBER 11, 2021

Agenda

- Introduction and overview
- Background
- Business-as-usual management quantification and effects of ownership mapping
- Tribal Comments, Questions, and Discussion
- Next steps and closing



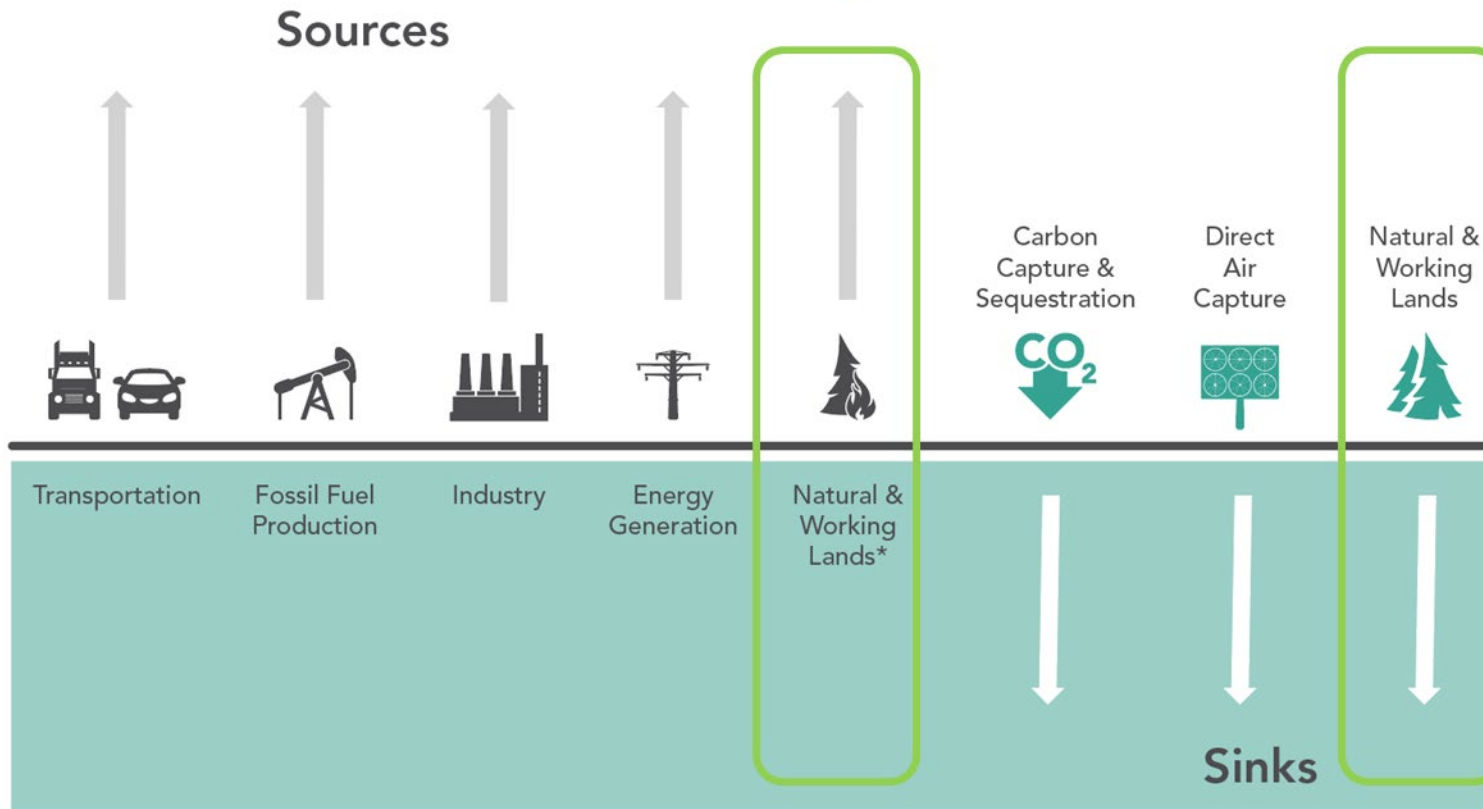
Purpose of Today's Webinar

- Share CARB's concept for quantifying Business-as-usual management
- Explain impacts of ownership maps on Scoping Plan target setting
- Receive feedback on Tribal ownership mapping and management



Science-based Target: Achieve Carbon Neutrality (CO₂e) Mid-Century

Sources Equal Sinks



*Natural and working land emissions come from wildfires, disease, land and ag management practices, and others

- Include NWL emission sources and sinks
- Prioritize minimizing emissions from sources
- Maximize sinks

California's Natural and Working Lands



What is the Scoping Plan

- California's strategic plan for reducing Greenhouse Gas emissions and achieving carbon neutrality
 - Carbon neutrality means that the State as a whole will no longer negatively contribute to climate change.
- The Scoping Plan will determine how much carbon we need to have in NWL to be carbon neutral



Baseline and Scenarios

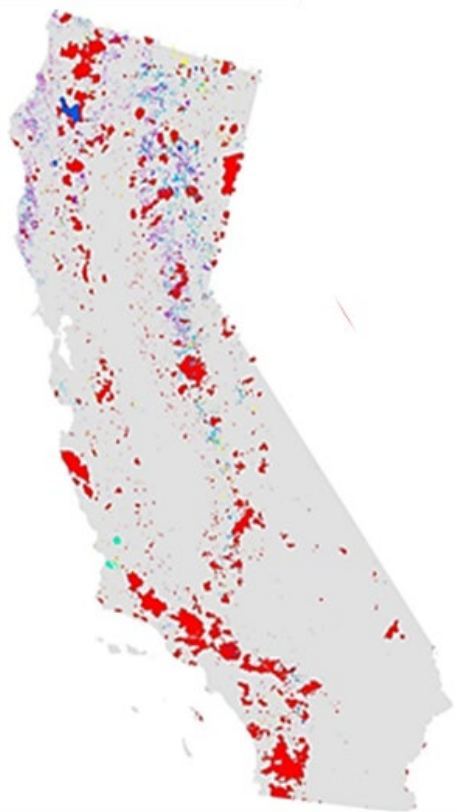
- Baseline vs. Business-as-usual
 - Baseline – A quantifiable carbon stock/sequestration rate at some moment in the past that will be used to measure progress towards a future carbon target
 - For example, in the previous Scoping Plan, fossil emissions have a target of 40% below 1990 emissions levels by 2030. In this example, 1990 emissions are the baseline off of which the target is defined
 - Business-as-usual (BAU) – A scenario of the future with no changes to land management compared to your baseline time-period. What is the outcome with no action?

Business-as-usual Scenario

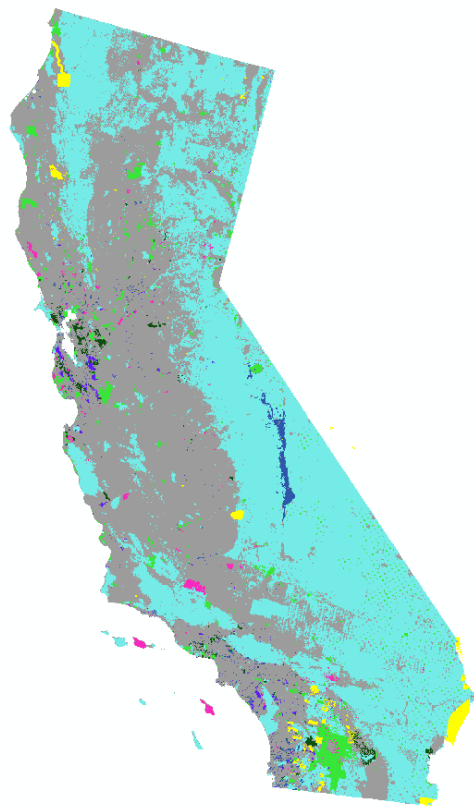
- Quantifiable land management from 2001-2014 for forests and shrublands
- Information needed:
 - Who is doing the management
 - Where are treatments happening
 - What type of actions are happening
(e.g., thinning, prescribed burning, clearcutting, etc.)
 - How big are their treatments
 - How frequently are treatments happening
 - How much of their land is being treated
- This will be used to model BAU management under climate change



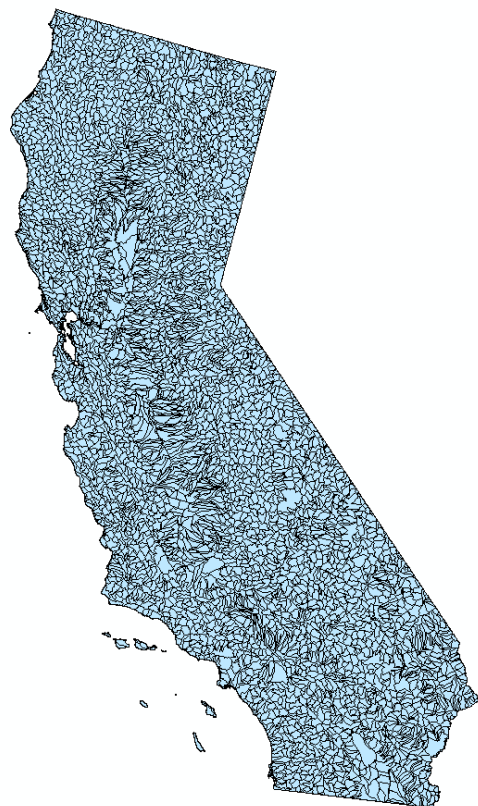
Business-as-usual Scenario



Disturbances/Treatments



Ownership



Watersheds



Dominant Ownership
(yellow indicates tribal dominant ownership)

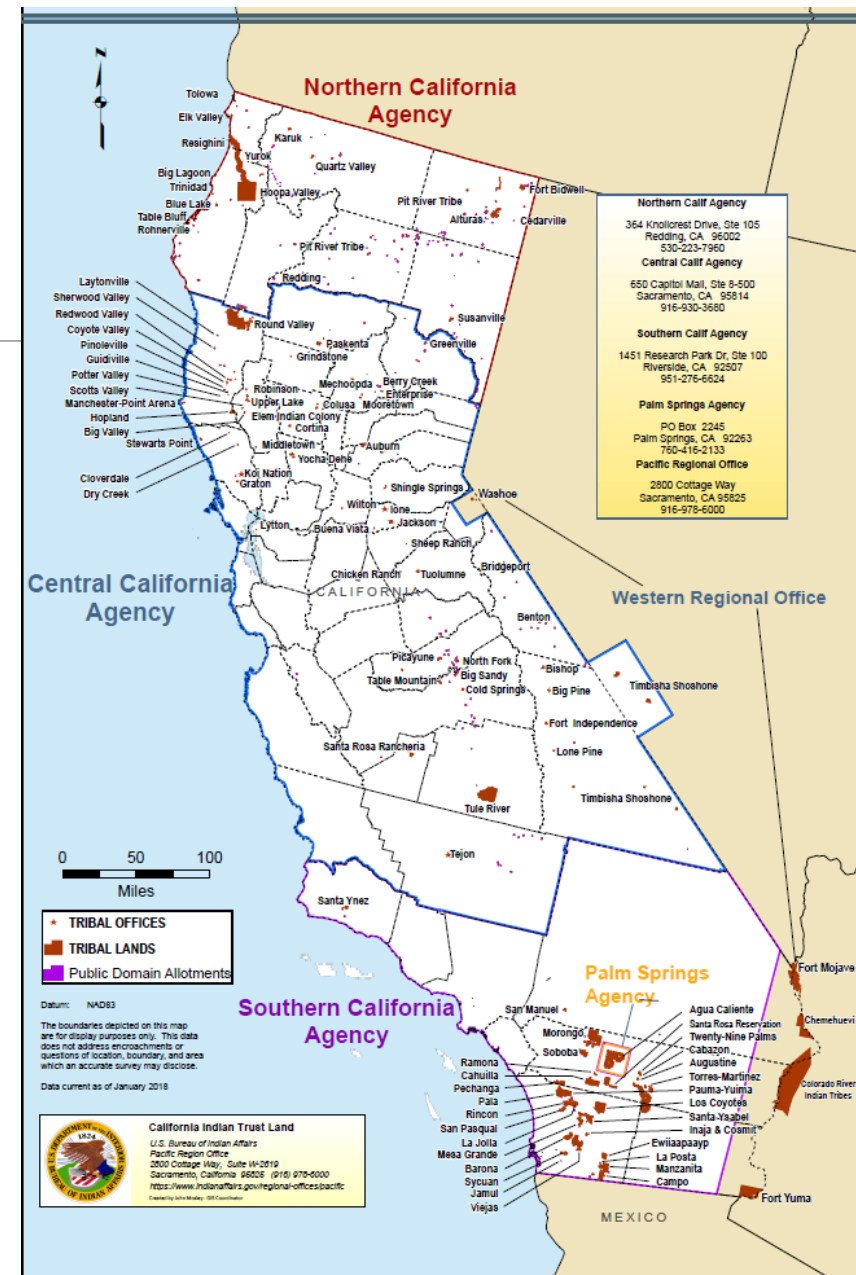
Importance of ownership mapping

- Business-as-usual management is quantified for dominant watershed ownerships
- Ownership maps will determine to whom management is attributed
- Future scenarios will be defined by these ownerships
- It is possible that alternative scenarios may be defined in terms of BAU management and by owner. For example:
 - Tribes might increase prescribed burning by 100%
 - Forest Industry might decrease clear cuts by 10%

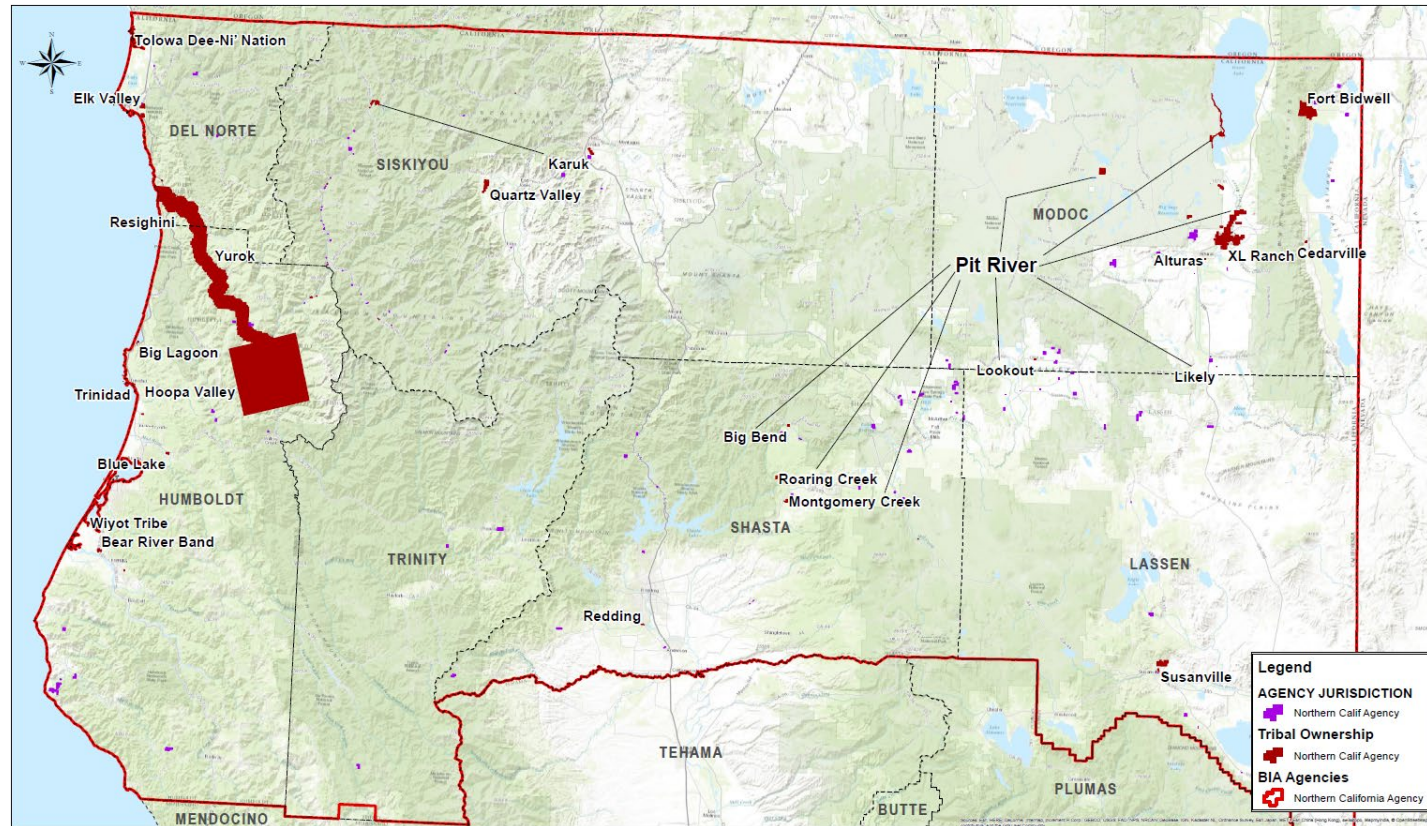


BIA Tribal boundaries, and Indian owned allotments

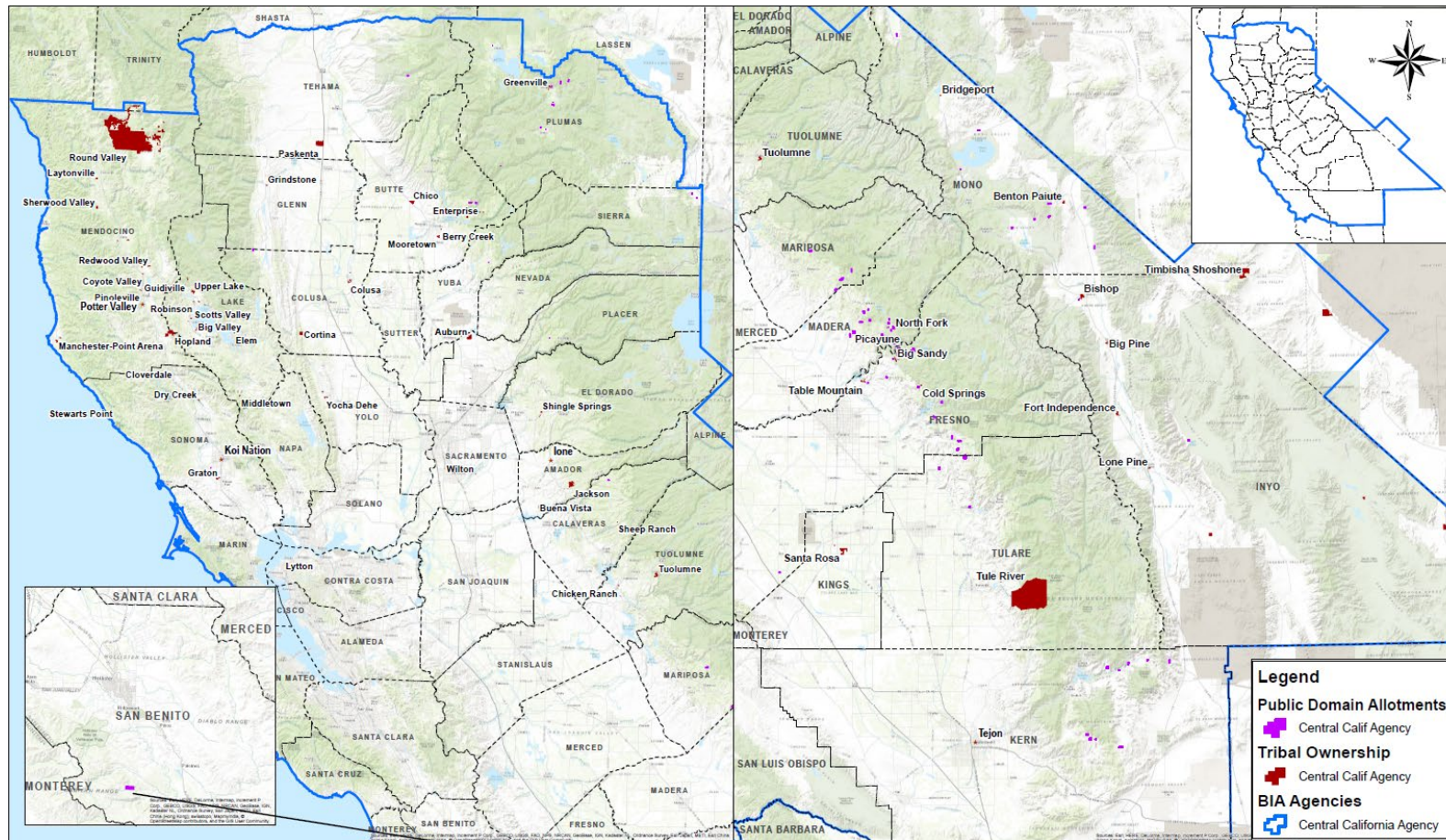
- Bureau of Indian Affairs Map
- Exterior reservation boundaries of Native American Indian Reservations in California
 - 2017 update
 - PRO_Trust_Boundary



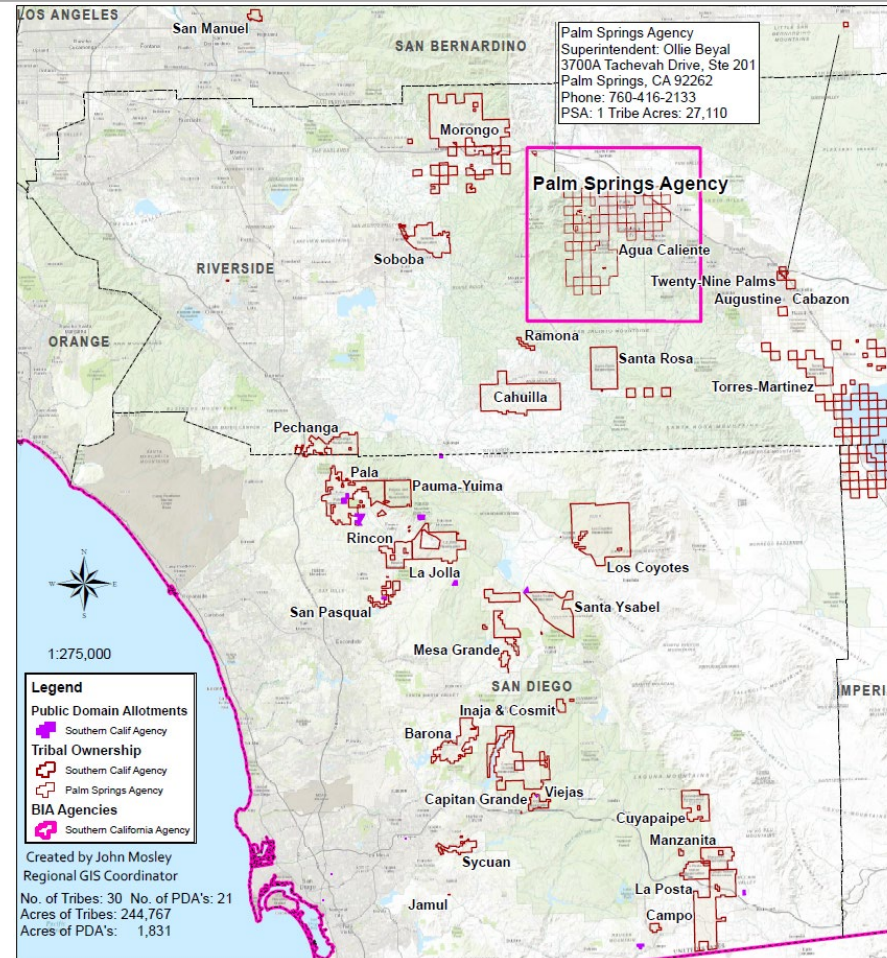
Tribal boundaries, and Indian owned allotments - North



Tribal boundaries, and Indian owned allotments - Central



Tribal boundaries, and Indian owned allotments - South



Questions for you

- Does the BIA map accurately represent where tribes currently have direct control over forest and shrubland management decisions?
- If this map is not sufficient, what map(s) would you recommend CARB use?
 - We cannot create new maps and can only use existing maps. Maps must be statewide
- Use the “Raise Hand” function in the GoToWebinar toolbar, which should be located to the right of your screen as shown
- When staff call your name, please “Unmute” yourself by clicking the red button, and proceed to introduce yourself

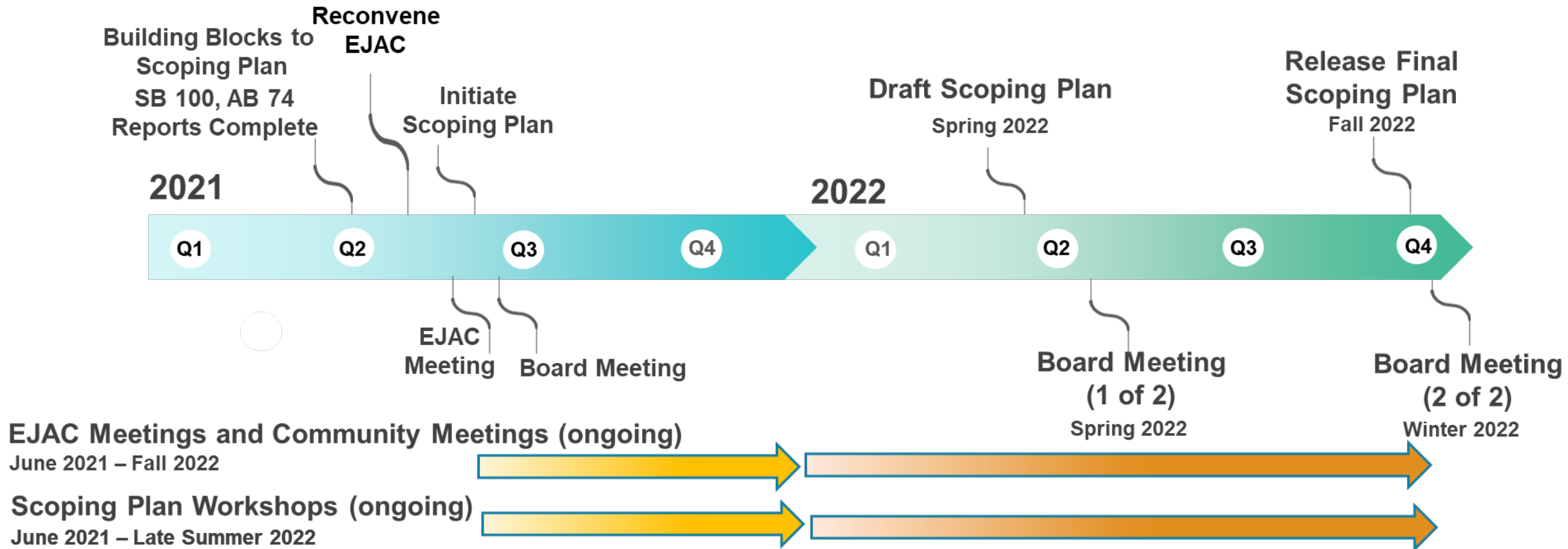


Note: Other workshops focus on scenario development. Please provide feedback on how you would like management to change in the future through those workshops

Submitting written comments

- Written comments
 - Please submit written comments to: adam.moreno@arb.ca.gov
 - If possible, send comments by October 27, 2021

2022 Scoping Plan Update Schedule



Staying Engaged

Scoping Plan Workshops	Environmental Justice Advisory Committee Meetings
Supporting Material and Information	Board Meetings
www.arb.ca.gov/our-work/programs/ab-32-climate-change-scoping-plan	

Closing Remarks
