



# **Informational Update on CARB's Community Engagement Model**

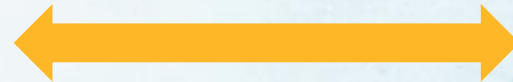
CARB Board Meeting: March 27, 2025

# Commitment to Advancing Racial Equity

CARB Board **Resolution 20-33:**  
A Commitment to Racial Equity and Social Change

## RACIAL EQUITY

### PROCESS



### OUTCOME

*MEANINGFUL ENGAGEMENT*

**How** we engage with communities most impacted by our decisions.

*FAIR TREATMENT*

**Use engagement outcomes** to influence or inform decision(s) to be more just and equitable.

# Why did CARB Develop the Community Engagement Model?

**Standardize** best practice strategies for engaging with communities

**Collaborate** with diverse and hard to reach groups

**Advance** racial equity

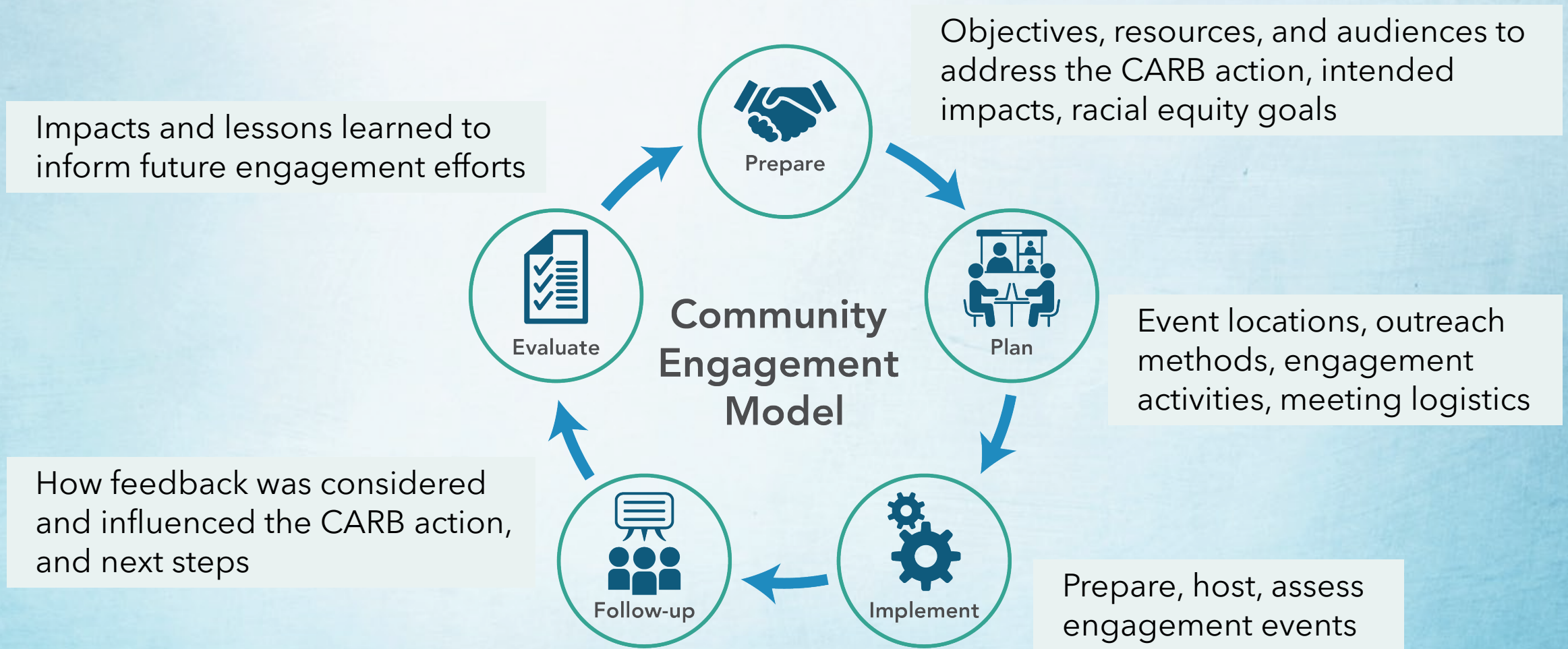


# What is the Community Engagement Model?

- **Guidance document** for CARB staff to ensure engagement plans incorporate community perspectives
- Provides practical tools and best practices
- Step-by-step guidance organized into five sections



# Let's Walk Through the Model Step-by-Step





# How Did CARB Develop the Model?



# Community Comments Received



Staff Skills and  
Capacity



Including Diverse  
Voices



Inclusive and  
Equitable Practices



Evaluations



Increasing  
Transparency



# Community Engagement Capacity Building Workgroup

## Part One



**Pablo Cicero-Fernandez**

Emissions Certification  
& Compliance Division



**Antonio Amaro**

Enforcement Division



**Aldo Chaney**

Enforcement Division



**Jonathan Blufer**

Industrial Strategies  
Division



**Karina Aguilera**

Monitoring &  
Laboratory Division



**Gretchen Ratliff**

Mobile Source Control  
Division



**Noemi Vitela**

Mobile Source  
Control Division



**Wenthe Yin**

Mobile Source  
Control Division



**Deidre Zoll**

Research Division



# Community Engagement Capacity Building Workgroup

## Part Two



**Jose Lopez**  
Research Division



**Joyce Wong**  
Sustainable  
Transportation &  
Communities Division



**Lana Wong**  
Sustainable  
Transportation &  
Communities Division



**Lisa Chiladakis**  
Sustainable  
Transportation &  
Communities Division



**La'Shaye Cobley, PhD**  
Transportation &  
Toxics Division



**Amanda Anderson**  
Transportation &  
Toxics Division



**Jaskamal Kaur**  
Transportation &  
Toxics Division



**Jaqueline Bartz**  
Transportation &  
Toxics Division



**Maria Osorio**  
Transportation &  
Toxics Division

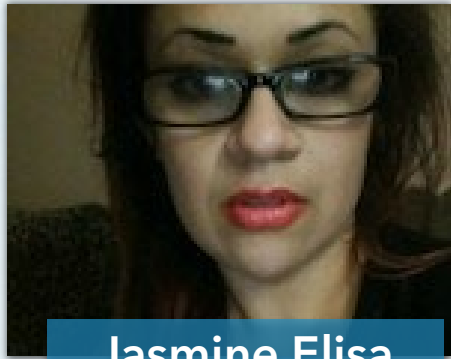


# Community Experts

## Part One



**Gustavo Aguirre  
Jr.**



**Jasmine Elisa  
Beltran**



**Leonora Camner**



**Rev. Dr.  
Ambrose Carroll**



**Alec Castellano**



**Carolina Correa**



**Lisa Flores**



**Richard Falcon**



**Lillian Garcia**



**Catalina  
Gonzales**



# Community Experts

## Part Two



Elena  
Hernandez



Athena Lue



Emily McCague



Maria Ridoutt  
Orozco



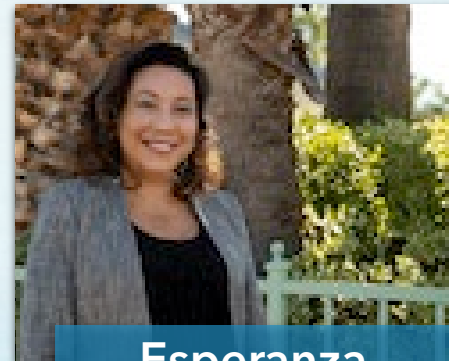
Violeta  
Sandoval



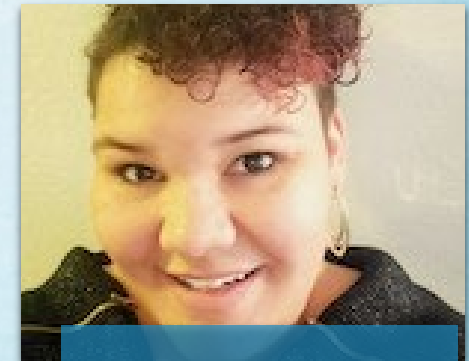
Vanessa Suarez



Ciarra Thrower



Esperanza  
Vielma



Heather Zappia

# Video on Community Engagement Model

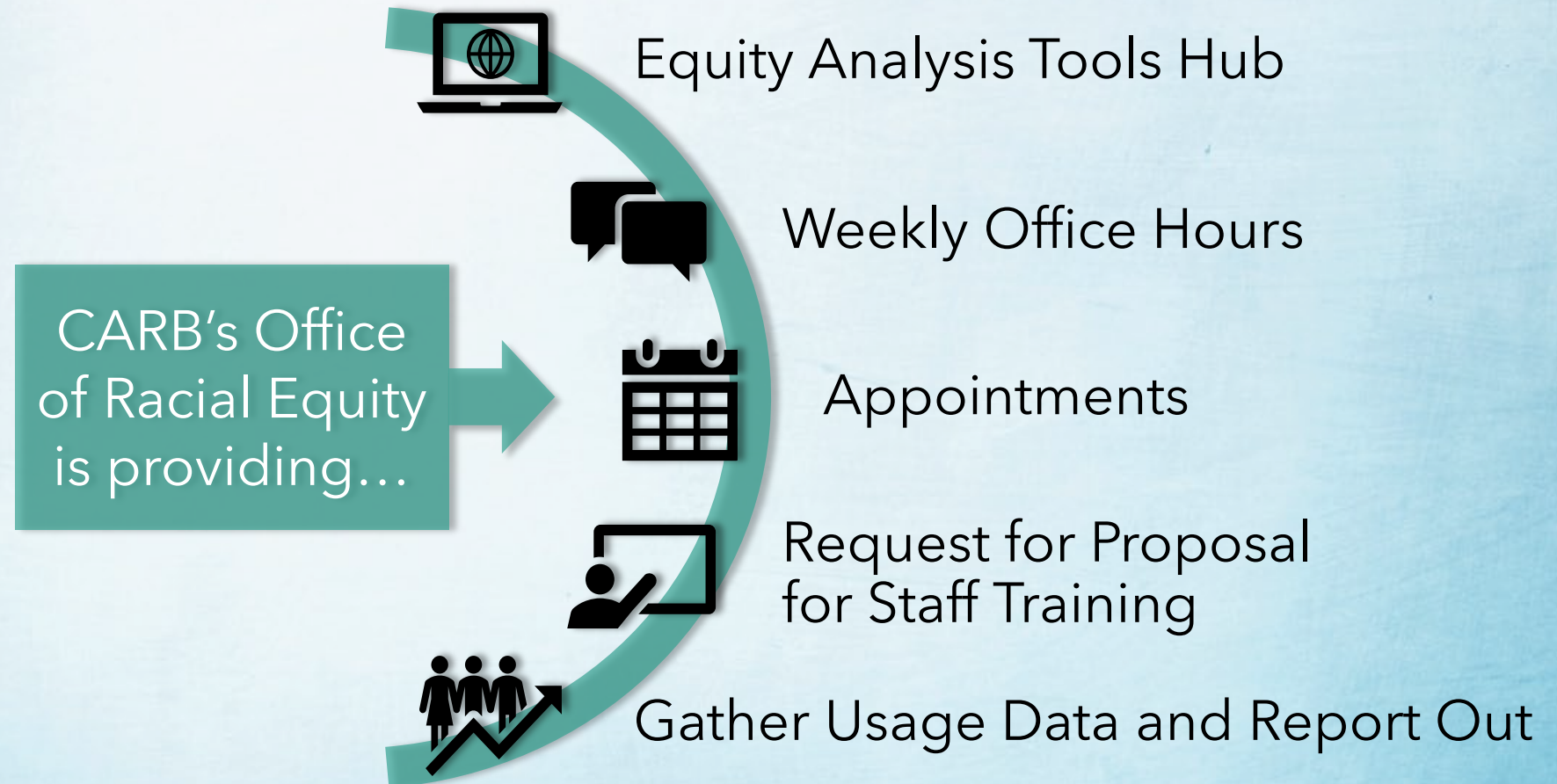


Link to [Video](#)





# Support for CARB Staff Using the Model



# CARB Actions Beyond the Model



Building staff capacity



More ground truthing efforts



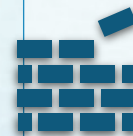
Evaluating change over time



Racial Equity Updates



Tribal Engagement Model



Removing Barriers



# Thank You!

CARB Community Engagement Model

<https://ww2.arb.ca.gov/community-engagement-model>

CARB Equity

<https://ww2.arb.ca.gov/equity>

CARB Environmental Justice

<https://ww2.arb.ca.gov/our-work/topics/environmental-justice>

Contact us at **[CommunityEngagement@arb.ca.gov](mailto:CommunityEngagement@arb.ca.gov)**