



CARB's Program Priorities for 2025

Rising to the Challenges Ahead
January 23, 2025

The Expected Challenges of 2025

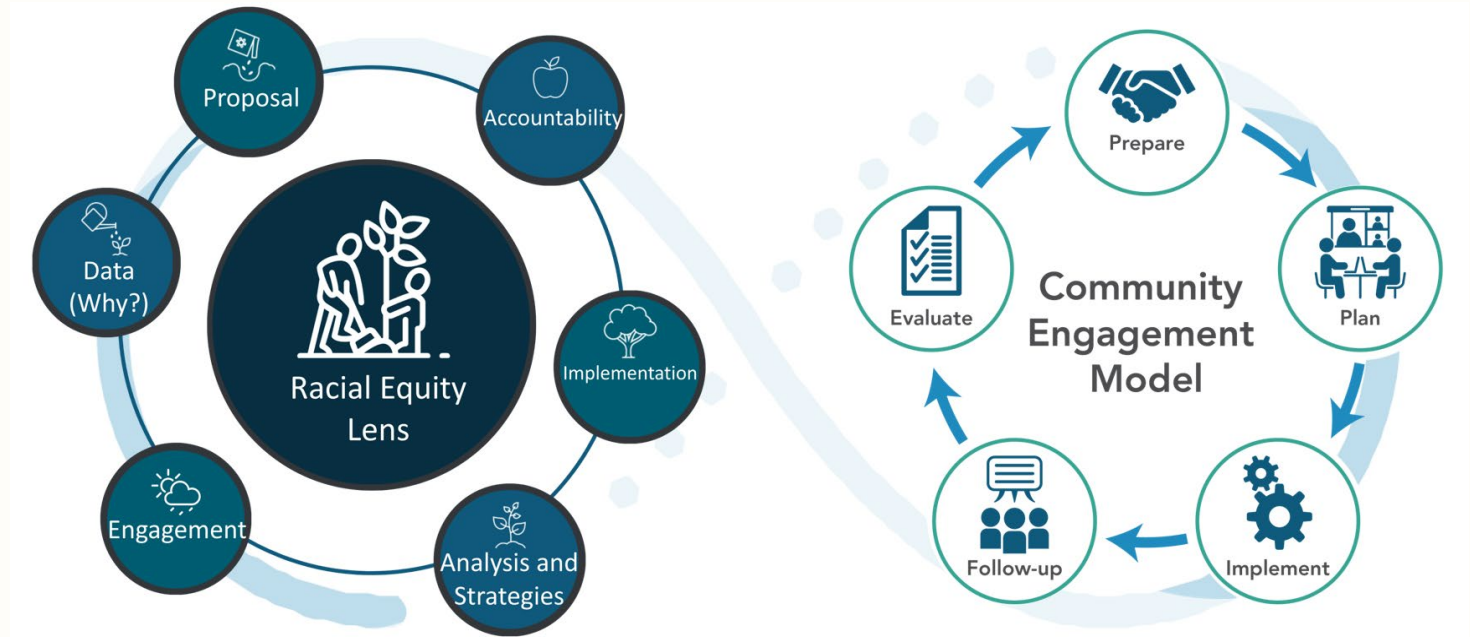
- **Federal Administration Threats**
 - Challenges to California's unique authority
 - Litigation threats
- **Statewide Fiscal Challenges**
- **How CARB Will Respond**
 - Hold our ground – defending our authority under the Clean Air Act
 - Pursuing alternative pathways
 - Prioritizing most impactful efforts



Rising to the Challenge

- Commitment to CARB's Mission
- Embed racial equity and environmental justice

- **Racial Equity Lens & Community Engagement Model**





2025 Priorities for Existing Efforts



California Climate Investments (CCI)

Model for Climate Action

CCI Awareness and Participation

Environmental Justice and Equity

Jobs and Economic Opportunity

Affordability and Climate Resilience





Community Air Protection

**Year 1 Communities
Transition**

A Board Item

Award Grants

Annual Progress Report

Launch New Resources

Guidelines Update

**Support Monitoring
Initiative**



Transportation and Off-Road Efforts

Waivers/Authorizations Received

**Advanced Clean Cars II
Regulations**

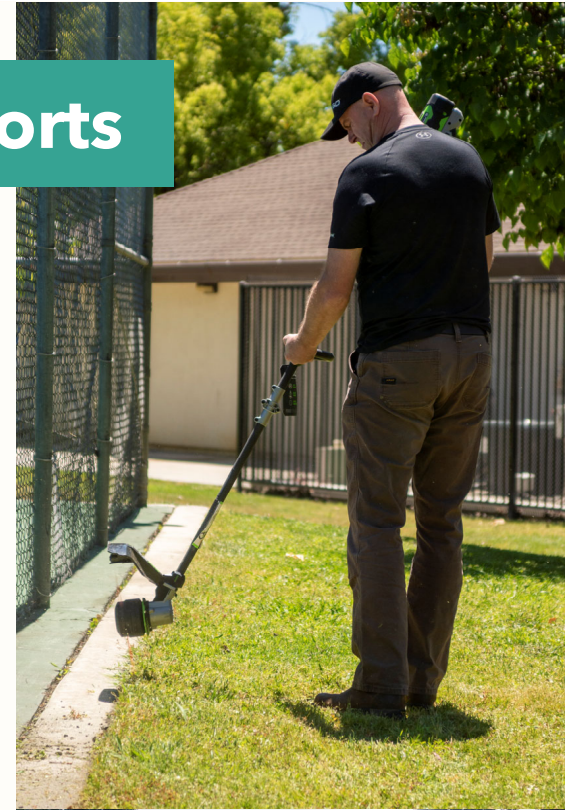
**Omnibus Low NOx
Regulations**

**Small Off-Road Engines
Amendments**

**Commercial Harbor Craft
Amendments**

**Transport Refrigeration Unit
Amendments**

**In-Use Off-Road Diesel-
Fueled Fleet Amendments**

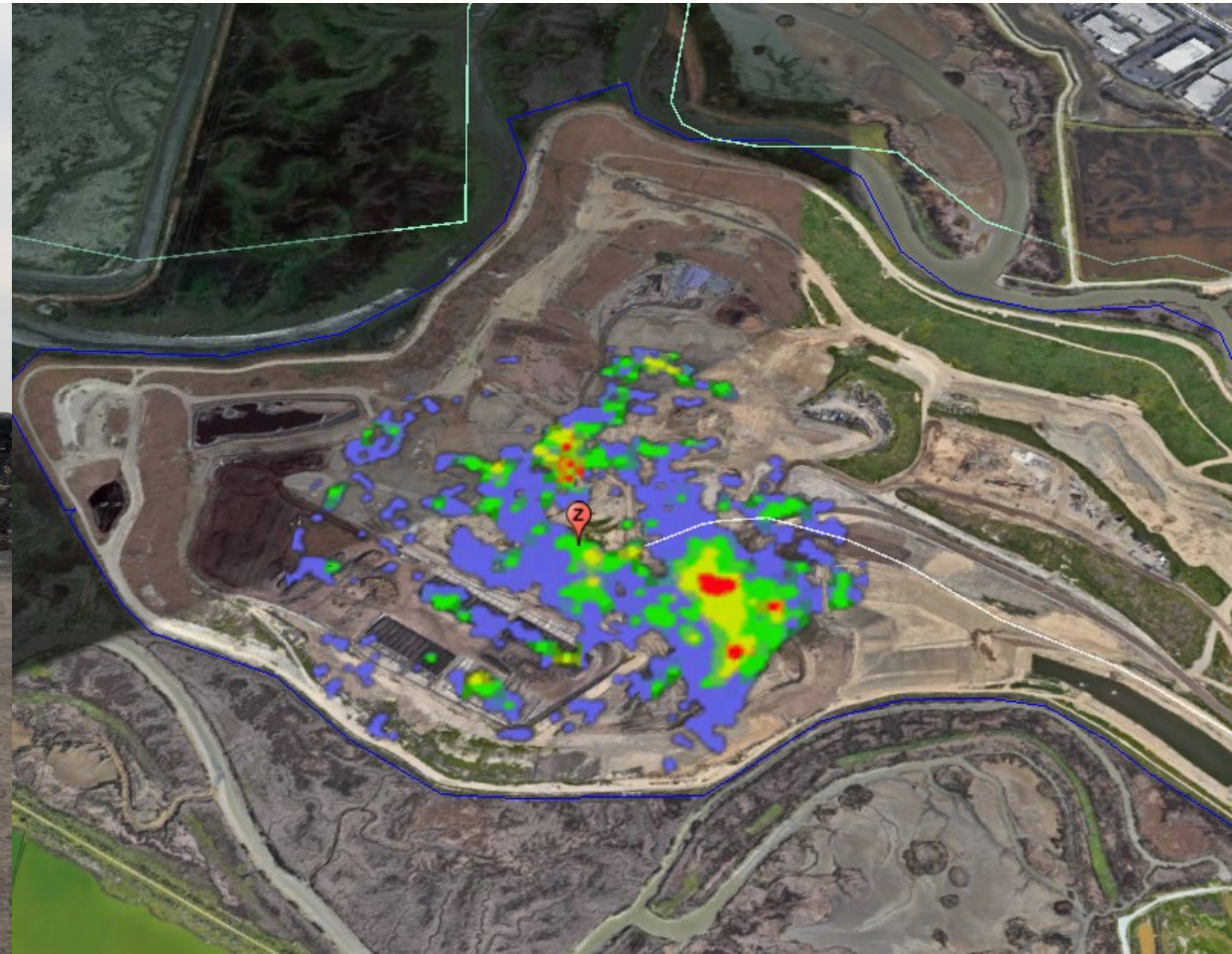




2025 Priorities for New Initiatives and Regulations



Continue Cutting Climate Superpollutants



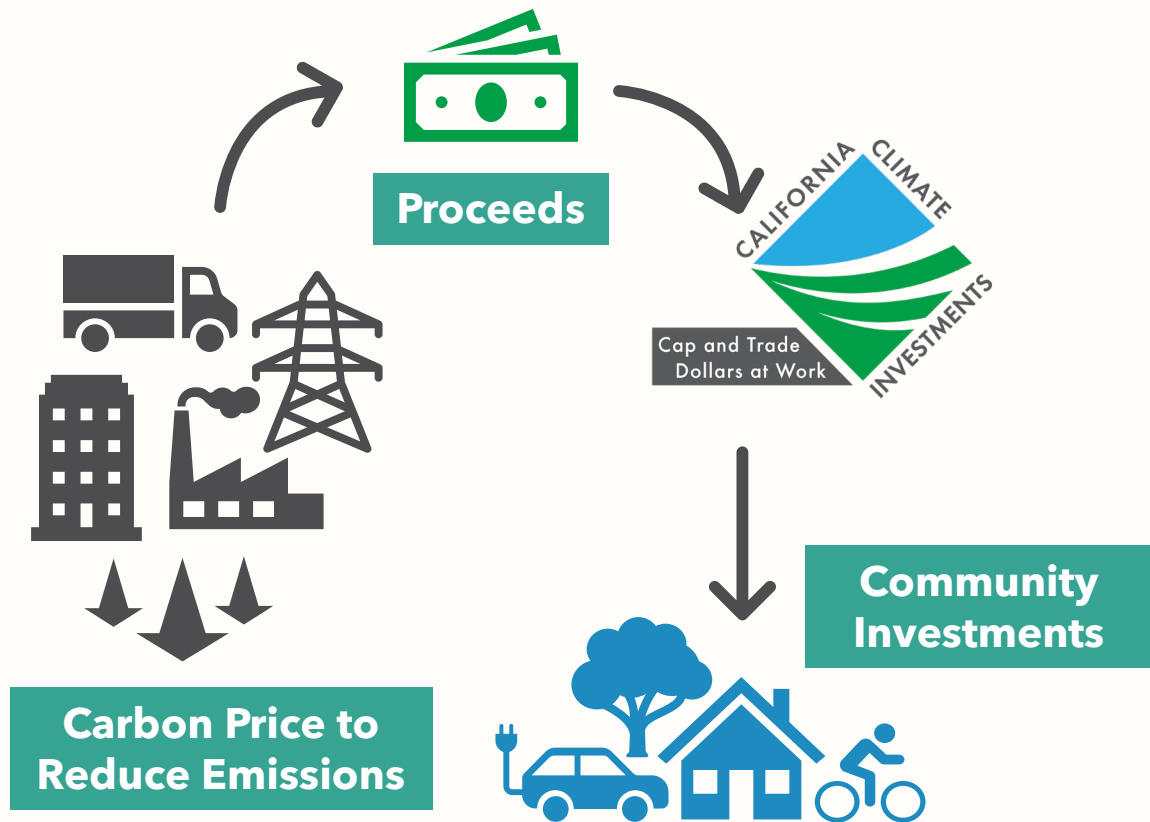


Update the Targets for SB 375

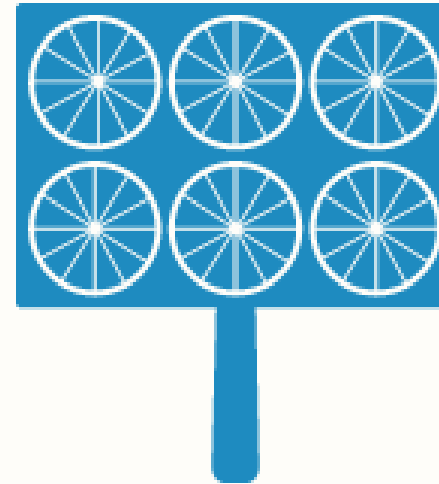


Strengthen Market Mechanisms, Climate Innovation, and Transparency

Cap-and-Trade



Carbon Capture, Utilization, and Sequestration



Corporate Reporting and Disclosure



Expand Clean Fuel Use



Look Ahead

- **The future is ours to shape** - let's rise to the challenges of 2025
- Focus on core programs and new initiatives
- Resilience, creativity, and collaboration
- **Thank you to the board and all staff** -you will help ensure 2025 is a year of success

