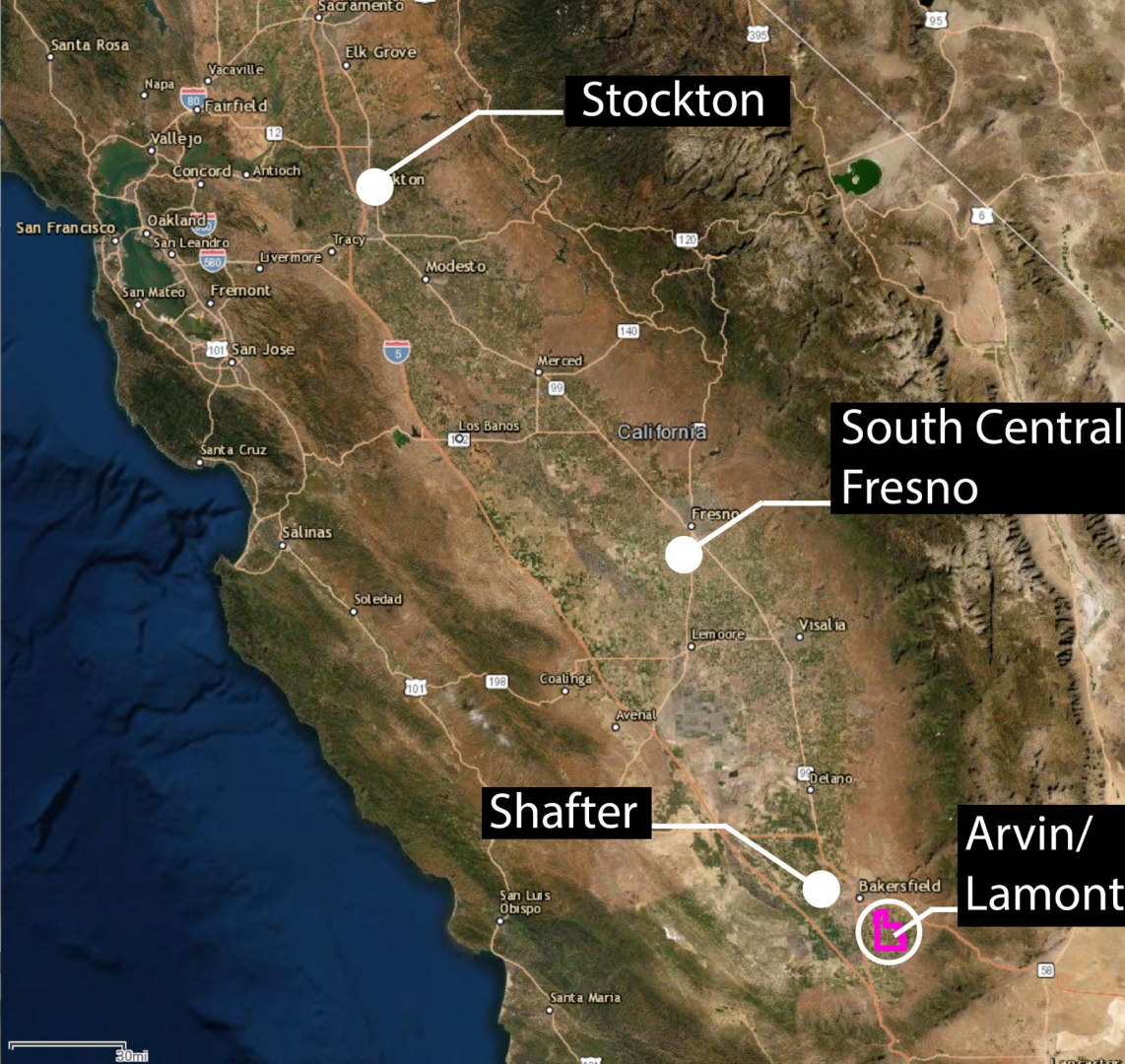




# **Consideration of the Arvin/Lamont Community Emissions Reduction Program (CERP)**

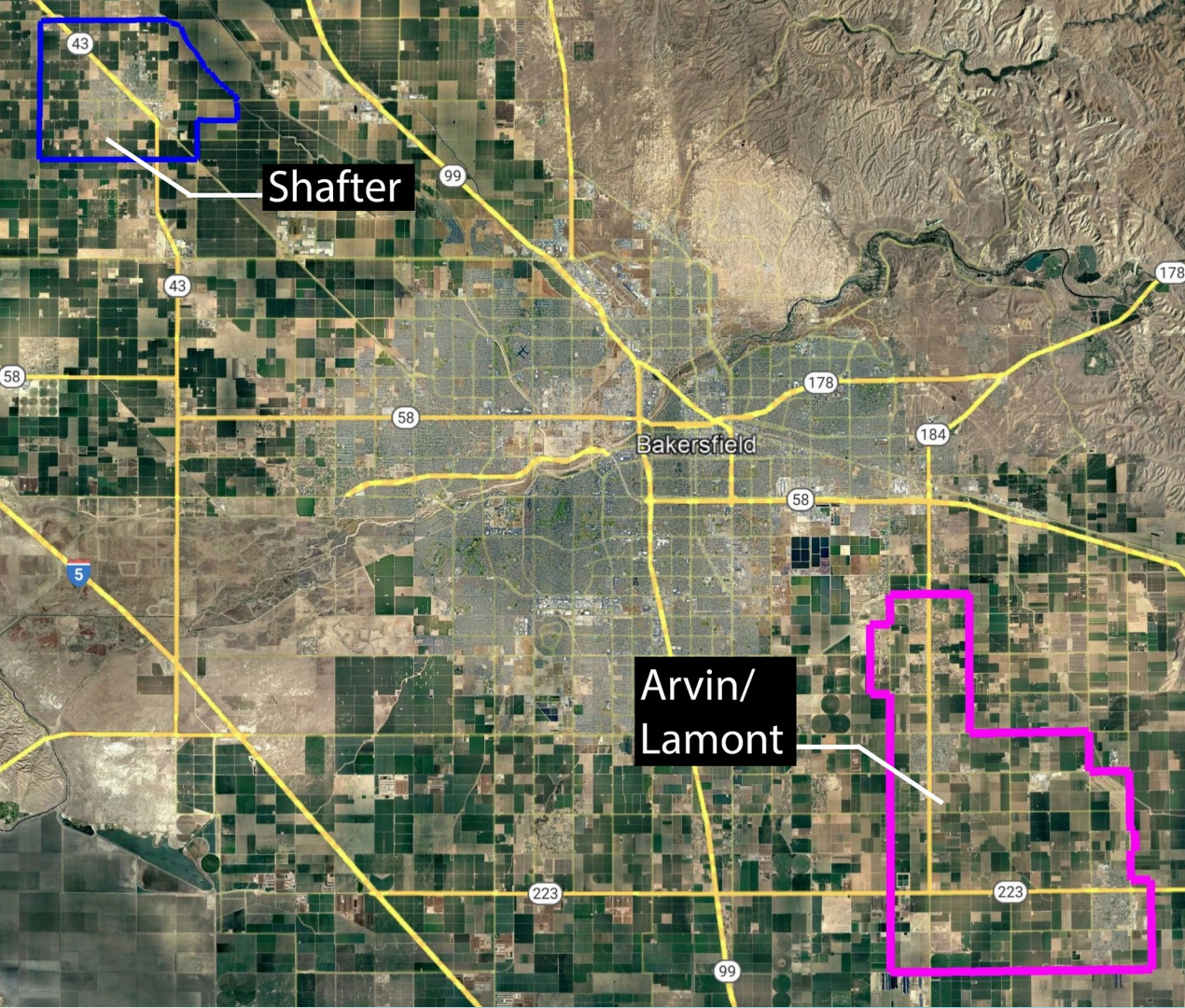
October 13, 2022



# San Joaquin Valley AB 617 Communities

- Stockton
- South Central Fresno
- Shafter
- Arvin/Lamont





# Kern County AB 617 Communities

- Shafter
- Arvin/Lamont



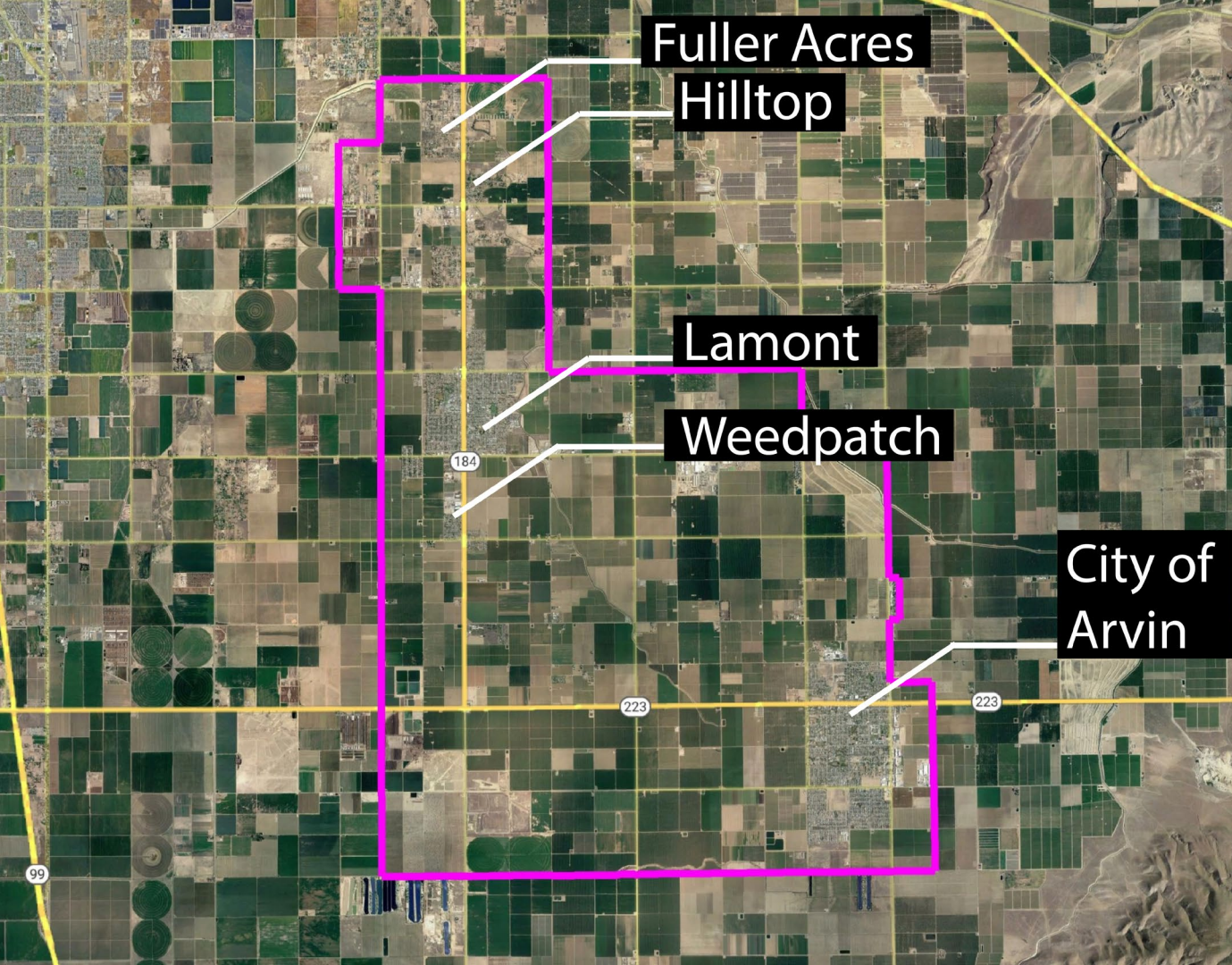
# Arvin/ Lamont Community

Includes:

- City of Arvin

*Unincorporated areas of*

- Lamont
- Fuller Acres
- Weedpatch
- Hilltop



# Decades of Community Action

## REVIEWS, CASE HISTORIES

### Illnesses Related to Shank Application of Metam-Sodium, Arvin, California, July, 2002

Michael O' Malley, MD, MPH  
Terrell Barry, PhD  
Mario Ibarra, BS  
Marylou Verder-Carlos, DVM, MPVM  
Louise Mehler, MD, PhD

**ABSTRACT.** *Objectives:* To evaluate the health effects of methyl isothiocyanate (MITC) and other byproducts resulting from the soil-incorporated (shank) application of 25,000 pounds of metam-sodium on July 8, 2002, near the community of Arvin, California.

*Methods:* Residents in a four-block area were interviewed regarding eye and upper respiratory irritation, non-specific systemic symptoms, and lower respiratory complaints. The distribution of cases was compared to results of Industrial Source Complex (ISC3) air dispersion modeling for the metam-sodium byproduct, methyl isothiocyanate (MITC). The 1-hour 200 ppb no-observed-effect-level (NOEL) and 800 ppb lowest-observed-effect level (LOEL) from a previous human eye irritation study were used to interpret the results of the air modeling estimates. Peak concentrations were compared to the 4-minute NOEL of 600 ppb and the LOEL of 1.9 ppm.

*Results:* Two-hundred-fifty-two cases of irritant, non-specific systemic, and respiratory symptoms were associated with the metam-sodium application. These included 178 community residents or visitors and 74 employees of a carrot packing operation located in the affected neighborhood of Arvin. The most severe reported illness occurred in a community visitor with a history of pre-existing pulmonary disease, who was hospitalized for a week with respiratory distress. ISC3 Modeling indicated

2002

### Arvin Residents Take On Air Pollution With 'Bucket Brigade'

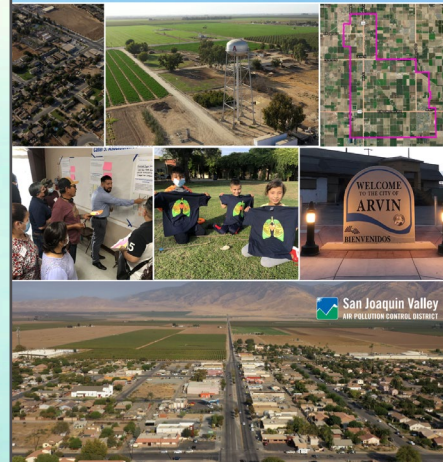
KVPR | By Joe Moore

Published October 16, 2012 at 9:43 AM PDT



2012

### Community Emissions Reduction Program Arvin/Lamont June 16, 2022



2022

# CERP Overview



Partnerships, outreach, enforcement,  
and regulatory measures



\$30 million in  
incentive-based  
strategies reduce:

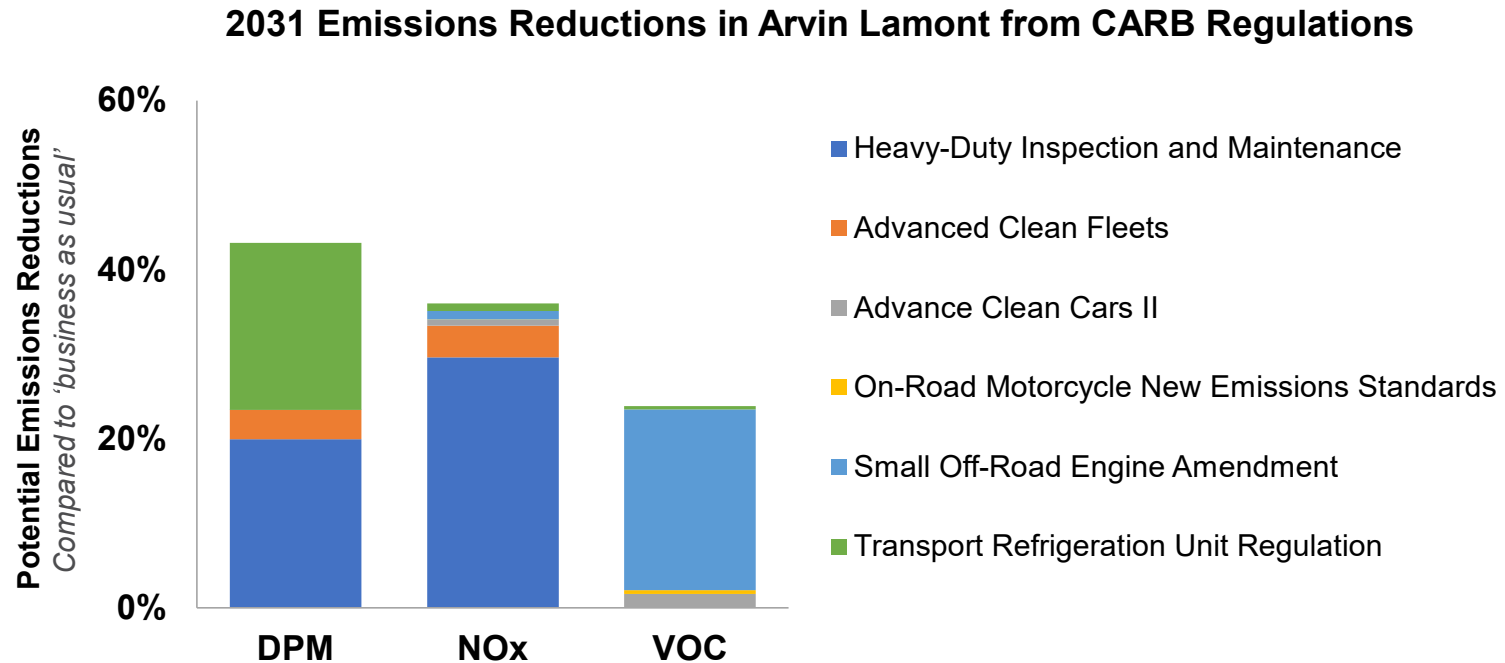
**372 tons NO<sub>x</sub>**  
**135 tons PM<sub>2.5</sub>**  
**148 tons VOC**



Community Steering Committee  
unanimously supported, unanimously  
approved by District



# 2031 Emission Reductions in Arvin/Lamont from CARB Regulations



# CERP Measure Examples

## Incentives - Heavy-Duty Trucks and Equipment

- Heavy-duty diesel truck replacement with clean trucks, for up to 30 trucks, with encouragement to small business owners to participate
- School bus replacement for up to 4 new zero-emission buses

## Incentives - Agriculture

- Agricultural equipment, such as tractors replaced with new, cleanest available technology equipment, for up to 50 pieces
- Alternatives to agricultural burning for up to 1,000 acres to help phase out this practice

## Incentives - Lawn and Garden Equipment

- Lawn and garden equipment replacement with battery-powered, zero-emission models, for up to 350 gas-powered units
- Commercial grade lawn and garden equipment replacement to battery-powered zero-emission models for up to 6 pieces and focus outreach and participation on small, locally owned business and schools

## Incentives - Residential Vehicles

- Residential vehicle repair program for eligible high-emitting vehicles funds up to \$800 per vehicle at 5 "Drive Clean in the San Joaquin" events
- Residential vehicle replacement with newer, more fuel-efficient models for up to \$20,000 per vehicle, up to 200 vehicles



# CERP Measure Examples (cont'd)

## Incentives - Transportation Infrastructure

- Development and construction of road and sidewalk improvements, and bicycle paths to promote alternative modes of transportation
- Increase outreach to promote CARB's e-bike voucher program to encourage low-income individuals to purchase an e-bike

## Rules, Regulations, and Enforcement

- Rule development for specific stationary sources
- Evaluation of several stationary source rules
- Expedite "Hot Spots" reassessment
- Alternatives to agricultural burning for up to 1,000 acres to help phase out this practice
- Enhanced inspection frequency for facilities with emissions violations, fugitive dust enforcement, and heavy-duty truck idling

## Agency Partnerships

- Pesticide measure development with DPR, CARB, and OEHHA
- Heavy-duty truck rerouting study with Caltrans, City of Arvin, Kern County, and Kern COG
- CalGEM, District, and CARB to identify and address issues related to abandoned oil wells

## Outreach

- Raise community awareness and knowledge of air quality, illegal burning, and incentive programs
- Promote Healthy Air Living with schools ([healthyairliving.com/schools](https://healthyairliving.com/schools))

# Key Strengths

- Community engagement and participation
  - Experienced partners
  - Steering Committee structure
  - Accessibility
  - Participatory budgeting
- Agency partnerships and coordination
  - DPR
  - City and County
  - CalGEM

# Recommended Actions to Strengthen Implementation

Staff identified areas to continue working on together:



Refine strategies, prioritize projects, and create workplan

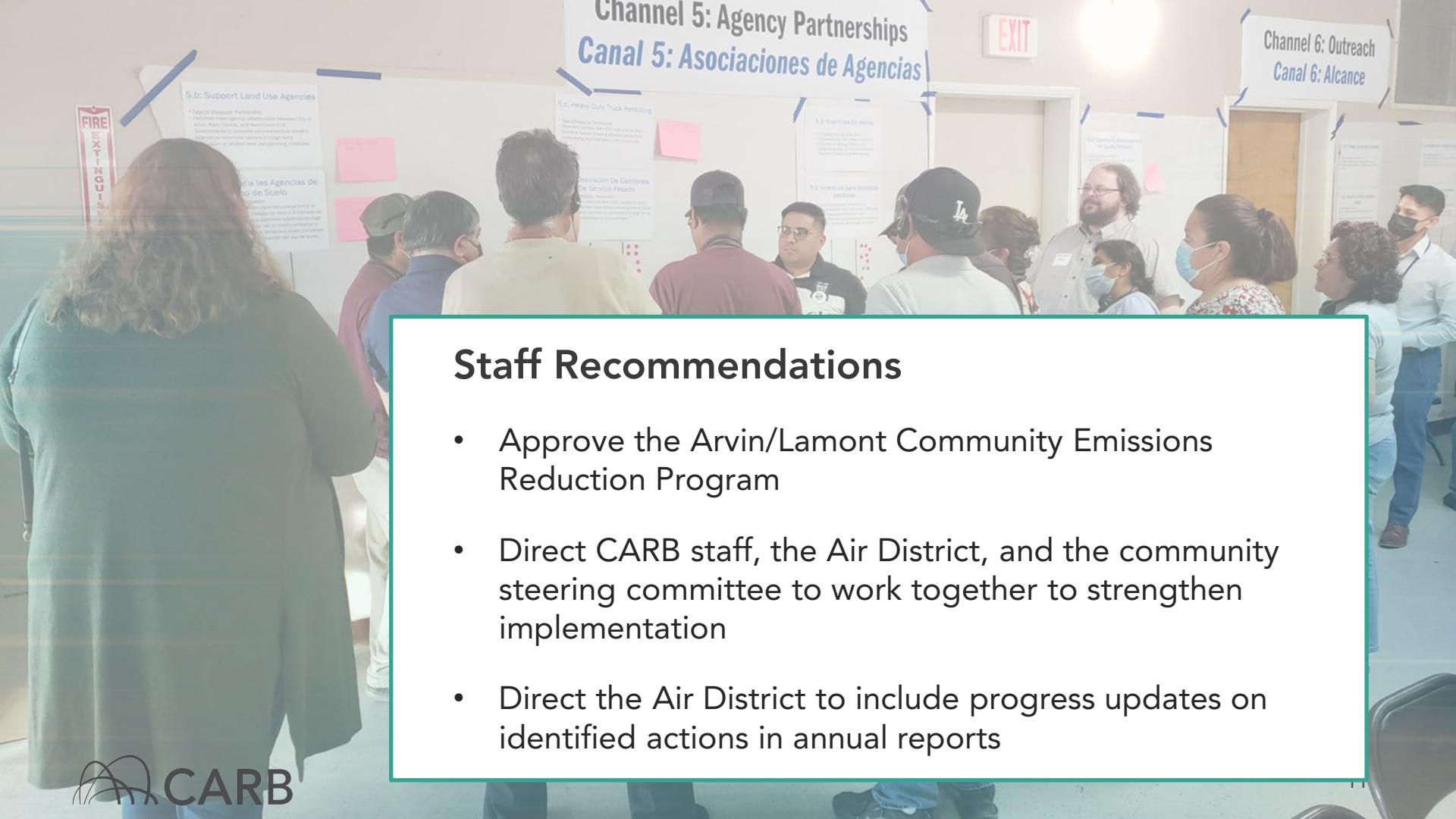


Collaborate to set goals, track expenditures, metrics, and enforcement ensuring transparency



Explore additional partnerships and clarify respective partner roles





## Channel 5: Agency Partnerships Canal 5: Asociaciones de Agencias

## Channel 6: Outreach Canal 6: Alcance

### Staff Recommendations

- Approve the Arvin/Lamont Community Emissions Reduction Program
- Direct CARB staff, the Air District, and the community steering committee to work together to strengthen implementation
- Direct the Air District to include progress updates on identified actions in annual reports