

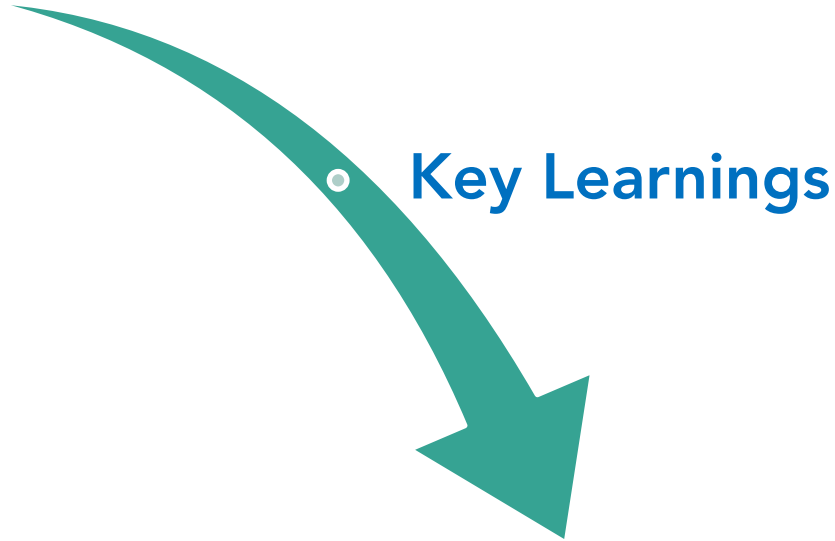


AB617 Community Emissions Reduction Program Implementation

September 24, 2020

First Year In Review

Breaking Ground



Community Actions

Seven Community Emissions Reduction Programs

- West Oakland
- South Central Fresno
- Shafter
- El Centro, Heber, Calexico
- San Bernardino, Muscoy
- East Los Angeles, Boyle Heights, West Commerce
- Wilmington, Carson, West Long Beach



Shared Responsibility for Success



CARB

- Implement statewide strategies
- Establish Program requirements (Blueprint)
- Collaborate on policy, technical & enforcement needs
- Provide Program oversight
- Administer grants



Local Air Districts

- Partner with communities on community emissions reduction programs
- Administer incentive funding
- Develop/implement rules requiring stronger pollution controls on industrial sources



Communities

- Partner with air districts on emissions reduction programs
- Provide direction on community concerns and local and statewide programs

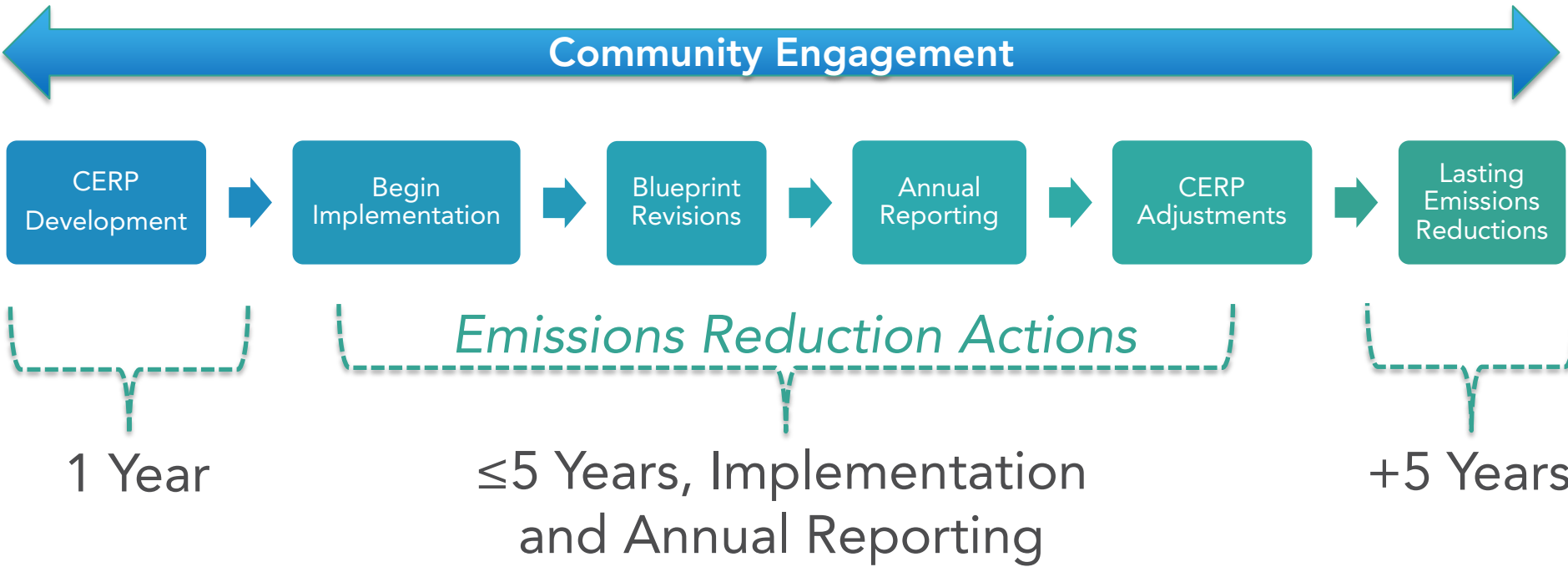
Public Engagement

Building Blocks

Community Partnerships and Engagement



Timeline Focuses on Action



Key Learnings

- Aggressive Timeline
- Clarity on Process and Outcomes
- CARB Proactive Engagement
- Training & Capacity Support
- State Agency & Local Gov't Collaboration
- Resources to Sustain Effort

Aggressive 1-year CERP Timeline to

Organize committees

Agree on ground rules and process

Understand technical foundation

Draw up possible actions

Prioritize and select strategies

Clarity on Process and Outcomes

The Blueprint required Community Steering Committees comprised of local stakeholders that are primarily community residents, but by design the Blueprint did not dictate how the committee should operate.

CARB Proactive Engagement

Community members and air districts have asked that CARB staff play a more proactive in role Community Steering Committee meetings.

Training & Capacity Support

- CARB Staff Training
 - Racial Equity
 - Cultural Competency
 - History
- CARB CSC Support
 - Blueprint
 - Videos
 - In-person



State Agency & Local Gov't Collaboration

Scope of air quality burdens—freight, industrial sources, pesticides, & more—requires more emphasis on collaboration between state, county, and city governments to address underlying land use and other contributing factors.

Resources to Sustain Effort

- The time and energy commitment by community residents is large.
- The staff and fiscal resources demands on air districts is equally large.
- And the program is growing.
- We will need to transition to a sustainable/exportable program.

Sustaining Effort Long-term

- Hundreds of communities currently nominated for inclusion.
- Consideration of new communities in December.
- Need models to share benefits to more communities.
- Benefits are the CERP actions plus community engagement and collaboration.

West Oakland



South Central Fresno



Shafter



El Centro, Heber, Calexico



Reports from Districts & Communities

- West Oakland
- South Central Fresno
- Shafter
- El Centro, Heber, Calexico