

Proposed Emergency Regulation: Diesel Agriculture Pump Engines



March 17, 2005



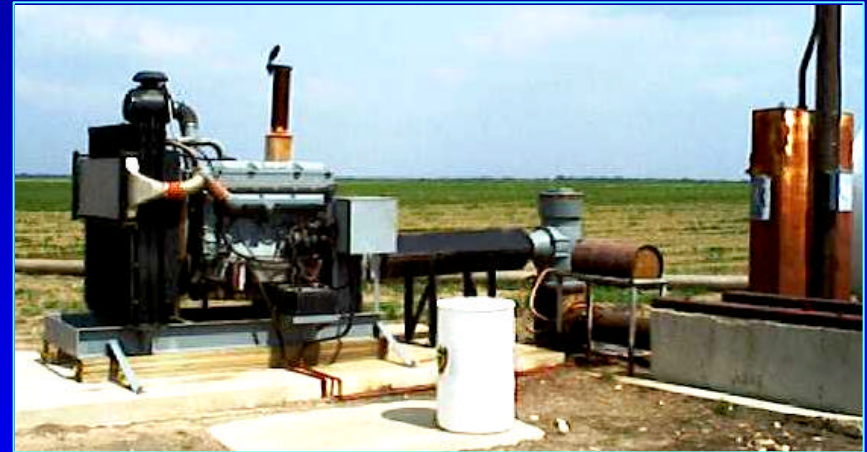
California Environmental Protection Agency
Air Resources Board

History

- **Adopted February 2004**
- **New engine requirements took effect January 2005**
- **New Engine PM Emission Standards (g/bhp-hr)**
 - **Industrial Application 0.01**
 - **Agricultural Application 0.15**
 - **Emergency Standby Application 0.15**

Complying Pump Engines Meeting 0.15 PM Standard Are Not Available in All Size Ranges

- **50-100 hp - very limited availability**
- **101-175 hp - not available in all sizes by all manufacturers**
- **Greater than 175 hp - fully available**



Today's Proposed Action

- **Modify Stationary ATCM on emergency basis for 50-100 hp Stationary Ag pump engines**
- **Initiate expedited rule making**
 - **Establish permanent rule modification for 50-100 hp pump engines**
 - **Initiate effort to determine if changes are needed for 101-175 hp pump engines**

Ag Engine Inventory

<u>Size (hp)</u>	<u># of Engines</u>
50-100	200
101-175	2,000
176+	3,000



Estimated Demand for New Pump Engines over the Next Four Years



Size (hp)

50-100

101-175

> 175

Units/Yr

25

250

400

Moyer Program Will Help Buy New Ag Engines

- **Moyer programs expected to pay for 60 to 80% of the cost of a new engine**
- **Remaining 20 to 40% privately funded**
- **Over the past 5 years, Moyer programs have helped replace 2,200 ag engines**

Availability of Ag Engines Meeting 0.15 PM Limit

Size (hp)

50-100

101-175

of Engines

7 of 52

37 of 70



Pump Engines Available in the 50-100 hp Range

Mfc.	A	B	C	D	E	
50- 69	2	0	0	*	0	
70-89	0	0	0	0	1	
90-100	1	2	*	0	1	
Total Complying/ Non complying	3/14	2/20	0/5	0/4	2/9	7/52

* no engines in the hp range

Pump Engines Available in the 101-175 hp Range

Mfc.	A	B	C	D	E	
HP Range						
101-120	0	3	*	0	0	
121-140	1	7	0	0	0	
141-160	1	7	*	0	1	
161-175	4	14	0	1	0	
Total	6/20	29/37	0/2	1/7	1/4	37/70

Complying/
Non complying

* no engines in the hp range

Issues Caused by Lack of Availability of 0.15 Engines

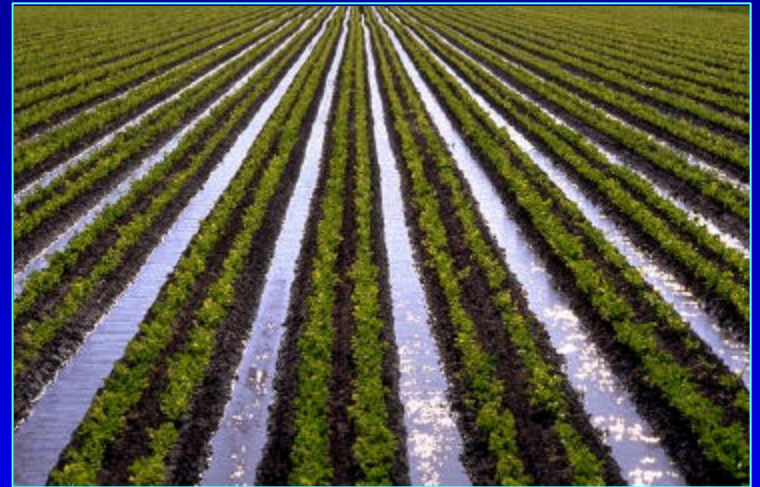
- **Certain engines can not be replaced with a like model from the same manufacturer**
- **Approval of about 20 Moyer applications will be delayed or will need to be amended**
- **Delay in replacing older engines could eventually delay emissions reductions**
- **Some lower priced engines can not be used, not all brands are available in all sizes**

Issues Caused By Lack of Availability (cont.)

- **Certain manufactures and their dealers will loose business to those with complying engines**
- **Non complying engines in inventory will have to be sold out of state**
- **Growers may not be able to obtain complying engines for the spring growing season**

Recommendations

- **Modify ATCM on emergency basis for 50 - 100 hp pump engines**
- **Return in May with amendments to ATCM for 50 - 100 hp category**



Recommendations (cont.)

- Investigate the need for similar changes to ATCM for 101 - 175 hp category, and include in May rulemaking if appropriate

