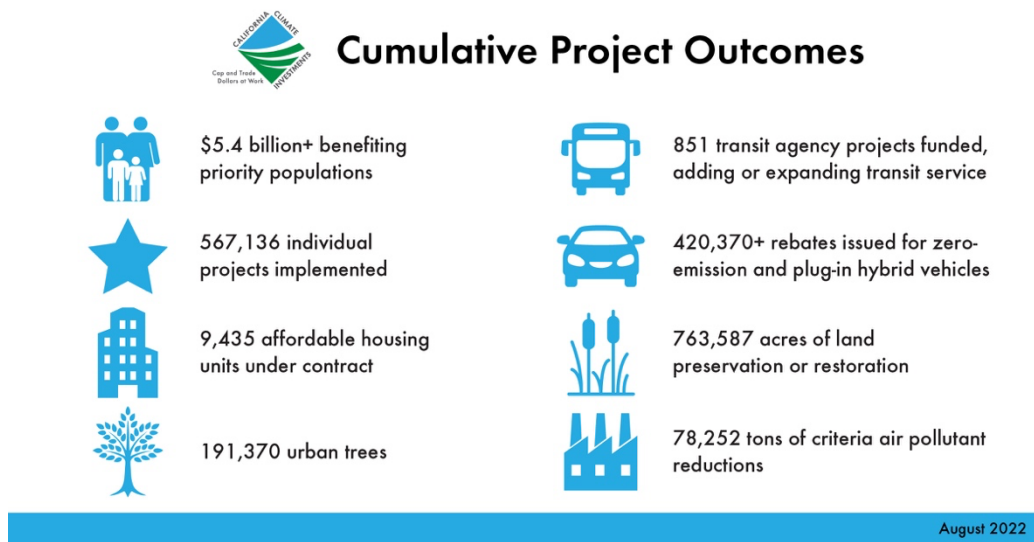


# California Climate Investments

## 2022 Mid-Year Data Update

The 2022 Mid-Year Data Update reports the cumulative progress of the California Climate Investments Program as of May 31, 2022 and serves to update the information in the 2022 Annual Report to the Legislature. With new investments in affordable housing and sustainable communities, wildfire prevention, clean transportation, and more, projects across the suite of California Climate Investments continue to reduce greenhouse gas (GHG) emissions and deliver major economic, environmental, and public health benefits for Californians, including meaningful benefits to the most disadvantaged communities.

California Climate Investments are directing billions of dollars into our State’s transition to a low-carbon and more equitable future, with over \$1.0 billion implemented from December 2021 through the end of May 2022, bringing the cumulative total to nearly \$11.4 billion. To date, at least \$5.4 billion in California Climate Investments funds have benefited priority populations. Cumulatively, 567,000 projects have reduced an estimated 78.6 million metric tons of carbon dioxide equivalent.



The following table includes updated summary statistics for each California Climate Investments program as of May 31, 2022. For more information visit the [California Climate Investments](https://climateinvestments.ca.gov/) website.

Administering Agency	Subprogram	Cumulative Funding Status (\$M)				Benefiting Priority Populations <sup>1</sup>		Implemented Projects		
		Allocated	Awarded <sup>2</sup>	Implemented	Intermediary Administrative Expenses <sup>3</sup>	(\$M)	%	GHG Reduction (1,000 MTCO <sub>2</sub> e)	Cost per GHG (\$/MTCO <sub>2</sub> e)	Number of Projects
California Air Resources Board	AB 617 Implementation	\$90.0	\$40.0	\$40.0	\$40.0	TBD		- <sup>4</sup>	-	-
	Community Air Grants	\$35.0	\$15.0	\$15.0	-	\$14.6	97%	- <sup>4</sup>	-	56
	Community Air Protection Incentives	\$964.0	\$700.8	\$455.7	\$44.7	\$385.9	94%	225	\$2,025	2,707
	Fluorinated Gases Emission Reduction Incentives	\$1.0	\$1.0	\$1.0	-	\$0	0%	37	\$27	15
	Funding Agricultural Replacement Measures for Emission Reductions	\$420.8	\$419.1	\$240.6	\$8.6	\$165.8	71%	168	\$1,430	6,134
	Advanced Technology Freight Demonstration Projects	\$117.2	\$117.2	\$117.2	-	\$117.2	100%	26	\$4,466	14
	Agricultural Worker Vanpools	\$6.0	\$6.0	\$6.0	-	\$6.0	100%	7	\$842	1
	Clean Cars 4 All	\$177.0	\$127.0	\$92.8	\$6.3	\$84.3	97%	85	\$1,090	11,838
	Clean Mobility in Schools Project	\$34.6	\$24.6	\$24.6	-	\$24.6	100%	10	\$2,453	3
	Clean Mobility Options	\$55.2	\$55.1	\$30.3	-	\$30.3	100%	3	\$9,367	51
	Clean Off-Road Equipment Voucher Incentive Project	\$44.2	\$44.2	\$42.9	\$3.1	\$33.2	83%	23	\$1,862	298
	Clean Truck & Bus Voucher Program (HVIP)	\$486.4	\$671.8	\$252.1	\$5.9	\$148.3	60%	975	\$259	4,299
	Clean Vehicle Rebate Project	\$995.1	\$995.1	\$974.0	\$15.3	\$313.6	33%	6,777	\$145	404,937
	Financing Assistance for Lower-Income Consumers	\$41.9	\$41.9	\$21.0	\$1.1	\$17.0	85%	24	\$878	3,597
	Outreach, Education, and Awareness	\$10.0	\$10.0	\$10.0	-	\$10.0	100%	- <sup>4</sup>	-	2
	Rural School Bus Pilot Projects	\$61.6	\$61.6	\$51.1	\$0.3	\$26.6	52%	47	\$1,095	168
Sustainable Transportation Equity Project	\$44.5	\$19.5	\$19.5	-	\$19.5	100%	4	\$5,047	11	

Administering Agency	Subprogram	Cumulative Funding Status (\$M)				Benefiting Priority Populations <sup>1</sup>		Implemented Projects		
		Allocated	Awarded <sup>2</sup>	Implemented	Intermediary Administrative Expenses <sup>3</sup>	(\$M)	%	GHG Reduction (1,000 MTCO <sub>2</sub> e)	Cost per GHG (\$/MTCO <sub>2</sub> e)	Number of Projects
California Air Resources Board (cont.)	Zero-and Near Zero-Emission Freight Facilities	\$148.7	\$148.7	\$148.7	–	\$148.7	100%	50	\$2,997	10
	Zero-Emission Truck and Bus Pilot Projects	\$85.0	\$82.8	\$82.8	–	\$64.5	78%	107	\$778	9
	Prescribed Fire and Smoke Monitoring	\$7.2	\$3.9	\$3.9	–	\$0.0	0%	– <sup>4</sup>	–	51
	Woodsmoke Reduction	\$13.0	\$8.5	\$7.6	\$0.8	\$5.9	86%	109	\$70	2,218
California Coastal Commission	Coastal Resilience Planning	\$5.3	\$2.1	\$2.1	–	\$1.1	54%	– <sup>4</sup>	–	16
California Conservation Corps	Training and Workforce Development Program	\$71.2	\$32.2	\$32.2	–	\$27.1	84%	267	\$121	564
California Department of Community Services and Development	Community Solar	\$2.2	\$2.0	\$2.0	–	\$2.0	100%	10	\$204	1
	Farmworker Housing Single-Family Energy Efficiency and Solar Photovoltaics	\$12.4	\$12.4	\$12.2	\$1.8	\$10.4	100%	19	\$656	759
	Multi-Family Energy Efficiency and Renewables	\$78.9	\$63.9	\$46.6	\$4.7	\$41.9	100%	193	\$241	9,662
	Single-Family Energy Efficiency and Solar Photovoltaics	\$70.0	\$70.0	\$70.0	\$9.3	\$60.7	100%	216	\$324	16,146
	Single-Family Solar Photovoltaics	\$51.0	\$51.0	\$51.0	\$6.8	\$44.1	100%	134	\$382	3,160
California Department of Fish and Wildlife	Wetlands & Watershed Restoration Program	\$46.7	\$36.9	\$36.9	–	\$20.5	55%	1,000	\$37	22

Administering Agency	Subprogram	Cumulative Funding Status (\$M)				Benefiting Priority Populations <sup>1</sup>		Implemented Projects		
		Allocated	Awarded <sup>2</sup>	Implemented	Intermediary Administrative Expenses <sup>3</sup>	(\$M)	%	GHG Reduction (1,000 MTCO <sub>2</sub> e)	Cost per GHG (\$/MTCO <sub>2</sub> e)	Number of Projects
California Department of Food and Agriculture	Alternative Manure Management Program	\$289.1	\$68.2	\$68.2	\$0.1	\$7.4	11%	1,100	\$62	115
	Dairy Digester Research and Development Program		\$195.3	\$195.3	–	\$130.1	67%	21,007	\$9	118
	Healthy Soils Program	\$65.5	\$33.6	\$33.6	\$0.1	\$12.0	36%	286	\$117	466
	Renewable and Alternative Fuels	\$3.0	\$3.0	\$3.0	–	\$0	0%	– <sup>4</sup>	–	1
	Technical Assistance Program <sup>5</sup>	\$4.4	\$4.4	\$4.4	–	\$2.4	54%	– <sup>4</sup>	–	74
	State Water Efficiency and Enhancement Program	\$63.1	\$61.8	\$61.8	\$0.5	\$22.9	37%	744	\$83	598
California Department of Forestry and Fire Protection	Community Fire Planning and Preparedness	\$10.0	\$7.5	\$7.5	–	\$6.2	83%	– <sup>4</sup>	–	4
	Fire Prevention Program	\$348.3	\$205.5	\$205.5	–	\$139.8	68%	– <sup>4</sup>	–	111
	Forest Carbon Plan Implementation	\$129.5	\$78.9	\$78.9	–	\$12.6	16%	13	–	266
	Wildfire Prevention Grants Program	\$861.1	\$219.6	\$219.6	–	\$94.7	43%	– <sup>4</sup>	–	306
	Forest Health Program		\$393.6	\$393.6	–	\$154.2	39%	15,045	\$26	212
	Forest Health Research	\$17.9	\$14.6	\$14.6	–	\$3.6	24%	– <sup>4</sup>	–	64
	Urban and Community Forestry Program	\$77.8	\$74.8	\$74.8	–	\$71.6	96%	479	\$156	115

Administering Agency	Subprogram	Cumulative Funding Status (\$M)				Benefiting Priority Populations <sup>1</sup>		Implemented Projects		
		Allocated	Awarded <sup>2</sup>	Implemented	Intermediary Administrative Expenses <sup>3</sup>	(\$M)	%	GHG Reduction (1,000 MTCO <sub>2</sub> e)	Cost per GHG (\$/MTCO <sub>2</sub> e)	Number of Projects
California Department of Resources Recycling and Recovery	Community Composting for Green Spaces Grant	\$1.5	\$1.5	\$1.0	–	\$0.7	75%	2	\$457	114
	Food Waste Prevention and Rescue Grants	\$24.1	\$23.7	\$23.7	–	\$22.9	97%	569	\$42	76
	Organics and Recycling Manufacturing Loans	\$9.2	\$7.7	\$7.7	–	\$0.8	11%	772	\$10	5
	Organics Grants	\$135.4	\$69.5	\$69.5	–	\$54.0	78%	1,305	\$53	28
	Recycled Fiber, Plastic, and Glass Grants	\$36.5	\$33.5	\$33.5	–	\$24.8	74%	642	\$52	16
	Reuse Grant Program	\$2.0	\$2.0	\$2.0	–	\$1.5	75%	1	\$3,613	4
	SB 1383 Local Assistance Grants	\$60.0	\$41.8	\$41.8	–	\$0	0%	0	–	393
California Department of Transportation	Active Transportation Program	\$10.0	\$10.0	\$10.0	–	\$10.0	100%	<1	\$163,934	3
	Low-Carbon Transit Operations Program	\$902.1	\$635.0	\$635.0	–	\$607.6	96%	6,261	\$101	813
California Department of Water Resources	State Water Project: Turbines	\$20.0	\$20.0	\$20.0	–	\$0	0%	37	\$542	2
	Water-Energy Grant Program	\$48.3	\$45.3	\$37.0	\$0.3	\$23.1	63%	386	\$96	95,562
California Energy Commission	Food Production Investment Program	\$124.0	\$112.8	\$112.8	–	\$92.6	82%	2,905	\$39	50
	Low-Carbon Fuel Production	\$12.5	\$12.5	\$12.5	–	\$11.7	94%	452	\$28	4
	Renewable Energy for Agriculture Program	\$10.0	\$9.5	\$9.5	–	\$1.4	15%	127	\$75	45
California Environmental Protection Agency	Transition to a Carbon-Neutral Economy	\$2.6	\$2.6	\$2.6	–	\$0	0%	– <sup>4</sup>	–	2
California Governor's Office of Emergency Services	Fire Engines and Maintenance	\$28.5	\$26.5	\$26.5	–	\$0	0%	– <sup>4</sup>	–	2
	Wildfire Response and Readiness*	\$33.5	\$4.6	\$4.6	–	\$0	0%	– <sup>4</sup>	–	61

Administering Agency	Subprogram	Cumulative Funding Status (\$M)				Benefiting Priority Populations <sup>1</sup>		Implemented Projects		
		Allocated	Awarded <sup>2</sup>	Implemented	Intermediary Administrative Expenses <sup>3</sup>	(\$M)	%	GHG Reduction (1,000 MTCO <sub>2</sub> e)	Cost per GHG (\$/MTCO <sub>2</sub> e)	Number of Projects
California High-Speed Rail Authority	High-Speed Rail Project	\$5,050.5	\$3,589.2	\$3,589.2	–	TBD <sup>8</sup>		– <sup>6</sup>	– <sup>7</sup>	1
California Natural Resources Agency	Regional Forest and Fire Capacity	\$20.0	\$17.5	\$6.1	\$0.2	\$2.2	38%	– <sup>4</sup>	–	31
	Urban Greening Program	\$156.5	\$145.3	\$145.3	–	\$137.7	95%	55	\$2,621	93
California State Coastal Conservancy	Climate Ready Program	\$7.0	\$6.7	\$6.7	–	\$4.1	62%	5	\$1,454	18
California State Transportation Agency	Transit and Intercity Rail Capital Program	\$1,915.8	\$2,190.8	\$556.1	–	\$514.8	93%	4,156	\$134	38
California State Water Resources Control Board	Safe and Affordable Drinking Water Fund	\$327.8	\$166.7	\$92.8	–	\$91.3	98%	<0	–	47
California Strategic Growth Council	Affordable Housing and Sustainable Communities Program	\$3,276.2	\$1,337.9	\$1,337.9	\$3.2	\$1,101.2	83%	2,515	\$532	112
	Sustainable Agricultural Lands Conservation Program	\$358.7	\$241.5	\$84.1	–	\$4.3	5%	8,795	\$10	83
	Climate Change Research Program	\$36.5	\$31.9	\$31.9	–	\$0	0%	– <sup>4</sup>	–	20
	Technical Assistance	\$12.7	\$9.9	\$8.0	–	\$8.0	100%	– <sup>4</sup>	–	30
	Transformative Climate Communities Program	\$241.3	\$227.8	\$207.8	\$2.9	\$192.6	94%	150	\$1,389	203
California Wildlife Conservation Board	Climate Adaptation and Resiliency Program	\$20.0	\$14.5	\$14.5	–	\$5.9	41%	130	\$111	27
California Workforce Development Board	Low-Carbon Economy Workforce**	\$38.7	\$24.4	\$24.4	–	\$24.4	100%	– <sup>4</sup>	–	30

Administering Agency	Subprogram	Cumulative Funding Status (\$M)				Benefiting Priority Populations <sup>1</sup>		Implemented Projects		
		Allocated	Awarded <sup>2</sup>	Implemented	Intermediary Administrative Expenses <sup>3</sup>	(\$M)	%	GHG Reduction (1,000 MTCO <sub>2</sub> e)	Cost per GHG (\$/MTCO <sub>2</sub> e)	Number of Projects
San Francisco Bay Conservation and Development Commission	Climate Resilience Planning	\$6.5	\$2.5	\$2.5	–	\$0	0%	– <sup>4</sup>	–	24
<b>Total</b>		<b>\$19,389.2</b>	<b>\$14,290.0</b>	<b>\$11,407.7</b>	<b>\$156.0</b>	<b>\$5,419.1</b>	<b>48%<sup>9</sup></b>	<b>78,628</b>	<b>–</b>	<b>567,136</b>

1. For programs that contract with intermediaries to administer projects, costs incurred for administration are not included when calculating benefits to priority populations. These costs are reported and included in the total implemented funds.
  2. Per statute, some administering agencies may plan for future projects by selecting projects for funding in advance of receiving appropriations to fulfill those commitments. For this reason, in some instances “Awarded” funds may exceed “Allocated” funds. The High-Speed Rail Authority does not select or award funds, so this value represents implemented funds to date. The values reported here as “Awarded” also include “Implemented” funds.
  3. Intermediary administrative expenses refer to funds provided to intermediaries (such as grantees, third-party administrators, or local agencies) that use part of the funding to cover the administrative costs associated with distributing incentives, implementing projects, or tracking and reporting data. Intermediary administrative expenses are reported as implemented when the final amount of the expense is known.
  4. These programs do not have a quantified GHG emission benefit.
  5. The CDFA Technical Assistance Program is jointly administered and funded by CDFA and SGC.
  6. Estimated GHG emission reductions from the California High-Speed Rail project is 102 million MTCO<sub>2</sub>e over its first 50 years of operating life, as detailed in the 2021 California High-Speed Rail Sustainability Report available at <https://hsr.ca.gov/programs/green-practices-sustainability/sustainability/>
  7. GGFR funds provide a critical part of the total funds for the system, though it is difficult to estimate precisely what the ultimate GGFR investment will be, and consequently, a comparable “GGFR investment per ton of GHG reduced” metric.
  8. GGFR and other funds implemented by the California High-Speed Rail Authority occurred in designated disadvantaged communities throughout California, spurring economic activity in these areas, as detailed in the Economic Impact of California High-Speed Rail 2022 Fact Sheet available at <https://hsr.ca.gov/wp-content/uploads/2021/04/Economic-Impact-Factsheet.pdf>
  9. Due to different statutory accounting and reporting requirements between California Climate Investments and the California High-Speed Rail Authority, benefits from High-Speed Rail Project implementation are not currently accounted towards meeting investment minimums for benefits to priority populations. As a result, the total cumulative benefit to priority populations discussed in this document is understated. CARB and Authority staff are actively working to account for priority population benefits.
- \* Pending additional information on expenditures. Data as of November 31, 2021.
- \*\* Pending data corrections.