

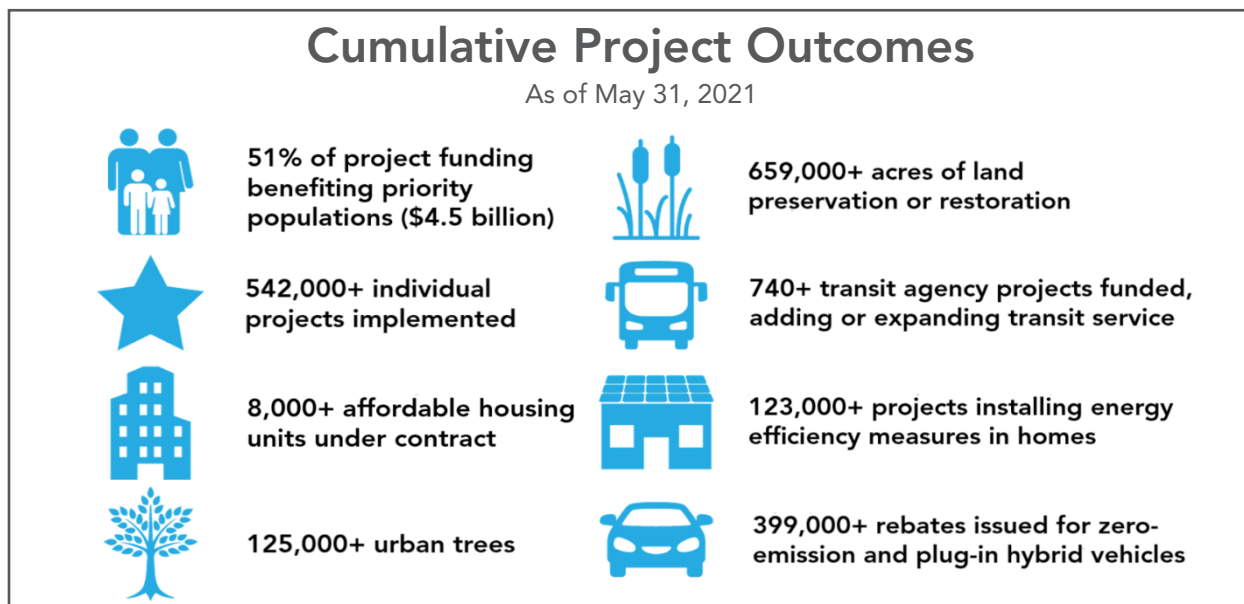


California Climate Investments

2021 Mid-Year Data Update

The 2021 California Climate Investments Mid-Year Data Update reports the cumulative progress of California Climate Investments as of May 31, 2021 and serves to update the information in the 2021 California Climate Investments Annual Report to the Legislature. With new investments in clean transportation, community air protection incentives, affordable housing and sustainable communities and more, projects across the suite of California Climate Investments continue to reduce greenhouse gas (GHG) emissions and advance public health, equity, and economic outcomes.

California Climate Investments are directing billions of dollars into our State’s transition to a low-carbon and more equitable future, with over \$728 million implemented from December 2020 through the end of May 2021, bringing the cumulative total to just over \$9 billion dollars. To date, \$4.5 billion in California Climate Investments funds have benefitted priority populations — 51 percent of all project investments. Cumulatively, 542,000 projects have reduced an estimated 70.0 million metric tons of carbon dioxide equivalent.



The following table includes updated summary statistics for each California Climate Investments program as of May 31, 2021.

For more information: Visit the [California Climate Investments](https://climateinvestments.ca.gov/) website.

Administering Agency	Subprogram	Cumulative Funding Status (\$M)			Implemented Projects				Benefiting Priority Populations ¹	
		Allocated	Awarded ²	Implemented	GHG Reduction (1,000 MTCO _{2e})	Cost per GHG (\$/MTCO _{2e})	Number of Projects	Intermediary Administrative Expenses (\$M) ³	(\$M)	%
California Air Resources Board	AB 617 Implementation	\$40.0	\$40.0	\$20.0	– ⁴	–	1	\$20.0	TBD	
	Community Air Grants	\$25.0	\$15.0	\$15.0	– ⁴	–	56	–	\$13.6	91%
	Community Air Protection Incentives	\$700.7	\$700.7	\$419.1	224	\$1,867	2,293	\$46.2	\$350.4	94%
	Fluorinated Gases Emission Reduction Incentives	\$1.0	\$1.0	\$1.0	37	\$27	15	–	\$0	0%
	Funding Agricultural Replacement Measures for Emission Reductions	\$250.8	\$250.8	\$193.2	150	\$1,292	5,027	\$6.1	\$130.3	70%
	Advanced Technology Freight Demonstration Projects	\$115.0	\$89.2	\$89.2	18	\$4,978	12	–	\$89.2	100%
	Agricultural Worker Vanpools	\$6.0	\$6.0	\$6.0	5	\$1,307	1	–	\$6.0	100%
	Clean Cars For All	\$102.0	\$102.0	\$85.4	74	\$1,147	10,790	\$6.3	\$77.1	97%
	Clean Mobility in Schools Project	\$24.6	\$24.6	\$24.6	10	\$2,453	3	–	\$24.6	100%
	Clean Mobility Options	\$55.2	\$54.4	\$10.7	3	\$3,312	31	–	\$10.7	100%
	Clean Off-Road Equipment Voucher Incentive Project	\$44.2	\$44.2	\$23.1	16	\$1,432	173	\$1.8	\$15.4	73%
	Clean Truck & Bus Voucher Program	\$486.4	\$475.3	\$271.7	1,112	\$244	4,298	\$6.5	\$168.1	63%
	Clean Vehicle Rebate Project	\$948.9	\$946.1	\$926.8	6,555	\$141	386,926	\$15.3	\$276.8	30%
	Financing Assistance for Lower-Income Consumers	\$33.9	\$20.1	\$13.0	14	\$922	2,204	\$1.1	\$9.9	84%
	Outreach, Education, and Awareness	\$6.0	\$6.0	\$6.0	– ⁴	–	1	–	\$6.0	100%
	Rural School Bus Pilot Projects	\$61.6	\$61.6	\$45.0	41	\$1,086	151	\$0.3	\$26.9	60%
	Sustainable Transportation Equity Project	\$19.5	\$19.5	\$19.5	4	\$5,047	11	–	\$19.5	100%
	Zero- and Near Zero-Emission Freight Facilities	\$148.7	\$148.7	\$148.7	50	\$2,997	10	–	\$148.7	100%
	Zero-Emission Truck and Bus Pilot Projects	\$85.0	\$82.8	\$82.8	107	\$778	9	–	\$64.5	78%
	Prescribed Fire and Smoke Monitoring	\$7.2	\$3.9	\$3.9	– ⁴	–	51	–	\$0	0%

Administering Agency	Subprogram	Cumulative Funding Status (\$M)			Implemented Projects				Benefiting Priority Populations ¹	
		Allocated	Awarded ²	Implemented	GHG Reduction (1,000 MTCO _{2e})	Cost per GHG (\$/MTCO _{2e})	Number of Projects	Intermediary Administrative Expenses (\$M) ³	(\$M)	%
California Air Resources Board (cont.)	Woodsmoke Reduction	\$8.0	\$8.0	\$7.4	104	\$71	2,102	\$0.8	\$5.6	86%
California Coastal Commission	Coastal Resilience Planning	\$4.5	\$2.1	\$2.1	– ⁴	–	16	–	\$1.1	54%
California Conservation Corps	Training and Workforce Development Program	\$55.7	\$23.9	\$23.9	192	\$125	417	–	\$19.8	83%
California Department of Community Services and Development	Community Solar	\$2.2	\$2.0	\$2.0	10	\$204	1	–	\$2.0	100%
	Farmworker Housing Single-Family Energy Efficiency and Solar Photovoltaics	\$12.4	\$12.4	\$9.8	13	\$762	611	\$1.6	\$8.0	97%
	Multi-Family Energy Efficiency and Renewables	\$63.9	\$63.9	\$40.1	169	\$238	8,559	\$2.8	\$37.3	100%
	Single-Family Energy Efficiency and Solar Photovoltaics	\$70.0	\$70.0	\$70.0	216	\$324	16,146	\$9.3	\$60.7	100%
	Single-Family Solar Photovoltaics	\$51.0	\$51.0	\$51.0	134	\$382	3,160	\$6.8	\$44.2	100%
California Department of Fish and Wildlife	Wetlands & Watershed Restoration Program	\$46.7	\$36.9	\$36.9	1,000	\$37	22	–	\$20.5	55%
California Department of Food and Agriculture	Alternative Manure Management Program	\$289.1	\$68.4	\$68.4	1,108	\$62	118	\$0.1	\$7.4	11%
	Dairy Digester Research and Development Program		\$195.8	\$195.8	21,057	\$9	119	–	\$130.6	67%
	Healthy Soils Program	\$40.5	\$34.1	\$34.1	289	\$118	478	\$0.1	\$12.1	35%
	Renewable and Alternative Fuels	\$3.0	\$3.0	\$3.0	– ⁴	–	1	–	\$0	0%
	State Water Efficiency and Enhancement Program	\$66.1	\$61.8	\$61.8	744	\$83	598	\$0.5	\$22.7	37%

Administering Agency	Subprogram	Cumulative Funding Status (\$M)			Implemented Projects				Benefiting Priority Populations ¹	
		Allocated	Awarded ²	Implemented	GHG Reduction (1,000 MTCO ₂ e)	Cost per GHG (\$/MTCO ₂ e)	Number of Projects	Intermediary Administrative Expenses (\$M) ³	(\$M)	%
California Department of Forestry and Fire Protection	Community Fire Planning and Preparedness	\$10.0	\$1.5	\$0.5	– ⁴	–	2	–	\$0.2	50%
	Fire Prevention Program	\$268.4	\$161.6	\$161.6	– ⁴	–	87	–	\$108.0	67%
	Forest Carbon Plan Implementation	\$122.0	\$54.6	\$54.6	– ⁴	–	142	–	\$6.9	13%
	Fire Prevention Grants Program	\$705.7	\$156.6	\$156.6	– ⁴	–	222	–	\$49.4	32%
	Forest Health Program		\$317.8	\$317.8	11,105	\$29	158	–	\$117.0	37%
	Forest Health Research	\$8.0	\$5.4	\$5.4	– ⁴	–	26	–	\$1.2	23%
	Urban and Community Forestry Program	\$77.8	\$74.8	\$74.8	479	\$156	115	–	\$71.6	96%
California Department of Resources Recycling and Recovery	Community Composting for Green Spaces Grant	\$1.5	\$1.5	\$0.1	1	\$79	9	–	<\$0.1	81%
	Food Waste Prevention and Rescue Grants	\$24.1	\$23.7	\$23.7	569	\$42	76	–	\$22.9	97%
	Organics and Recycling Manufacturing Loans	\$9.2	\$7.7	\$7.7	772	\$10	5	–	\$0.8	11%
	Organics Grants	\$75.4	\$72.5	\$72.5	1,312	\$55	29	–	\$57.0	79%
	Recycled Fiber, Plastic, and Glass Grants	\$36.5	\$36.5	\$36.5	703	\$52	17	–	\$24.8	68%
	Reuse Grant Program	\$2.0	\$2.0	\$2.0	1	\$3,613	4	–	\$1.5	75%
California Department of Transportation	Active Transportation Program	\$10.0	\$10.0	\$10.0	<1	\$163,934	3	–	\$10.0	100%
	Low-Carbon Transit Operations Program	\$685.9	\$558.3	\$558.3	6,224	\$90	719	–	\$540.2	97%
California Department of Water Resources	State Water Project Turbines	\$20.0	\$20.0	\$20.0	37	\$542	2	–	\$0	0%
	Water-Energy Grant Program	\$49.3	\$45.3	\$36.7	382	\$96	95,267	–	\$23.1	63%
California Energy Commission	Food Production Investment Program	\$124.0	\$107.2	\$107.2	3,177	\$34	45	–	\$87.8	82%
	Low-Carbon Fuel Production	\$12.5	\$12.5	\$12.5	452	\$28	4	–	\$11.7	94%
	Renewable Energy for Agriculture Program	\$10.0	\$9.5	\$9.5	127	\$75	45	–	\$1.4	15%

Administering Agency	Subprogram	Cumulative Funding Status (\$M)			Implemented Projects				Benefiting Priority Populations ¹	
		Allocated	Awarded ²	Implemented	GHG Reduction (1,000 MTCO ₂ e)	Cost per GHG (\$/MTCO ₂ e)	Number of Projects	Intermediary Administrative Expenses (\$M) ³	(\$M)	%
California Environmental Protection Agency	Transition to a Carbon-Neutral Economy	\$2.6	\$2.6	\$2.6	– ⁴	–	2	–	\$0	0%
California Governor's Office of Emergency Services	Fire Engines and Maintenance	\$27.2	\$26.5	\$26.5	– ⁴	–	2	–	\$0	0%
	Wildfire Response and Readiness	\$25.0	\$4.6	\$4.6	– ⁴	–	61	–	\$0	0%
California High-Speed Rail Authority	High-Speed Rail Project	\$3,961.2	\$2,339.7	\$2,339.7	– ⁵	– ⁶	1	–	\$0	0%
California Natural Resources Agency	Regional Forest and Fire Capacity	\$20.0	\$18.4	\$6.1	– ⁴	–	38	\$0.2	\$2.2	38%
	Urban Greening Program	\$156.5	\$117.8	\$117.8	45	\$2,633	70	–	\$111.3	94%
California State Coastal Conservancy	Climate Ready Program	\$7.0	\$6.7	\$6.7	4	\$1,521	18	–	\$4.1	62%
California State Transportation Agency	Transit and Intercity Rail Capital Program	\$1,481.8	\$2,123.4	\$389.9	2,557	\$153	29	–	\$357.6	92%
California State Water Resources Control Board	Safe and Affordable Drinking Water Fund	\$213.8	\$74.4	\$50.8	<0	–	20	–	\$49.3	97%
California Strategic Growth Council	Affordable Housing and Sustainable Communities Program	\$2,072.5	\$1,062.4	\$1,062.4	2,084	\$510	102	\$3.2	\$872.2	82%
	Sustainable Agricultural Lands Conservation Program	\$212.7	\$204.9	\$61.2	5,885	\$10	58	–	\$4.3	7%
	Climate Change Research Program	\$36.5	\$32.3	\$32.3	– ⁴	–	20	–	\$0	0%
	Technical Assistance	\$13.5	\$9.9	\$7.3	– ⁴	–	27	–	\$6.0	82%
	Transformative Climate Communities Program	\$241.3	\$227.8	\$206.3	145	\$1,427	151	\$2.9	\$191.2	94%
California Wildlife Conservation Board	Climate Adaptation and Resiliency Program	\$20.0	\$14.2	\$14.2	506	\$28	20	–	\$5.9	42%
California Workforce Development Board	Low-Carbon Economy Workforce	\$32.9	\$10.1	\$10.1	– ⁴	–	11	–	\$0	0%

Administering Agency	Subprogram	Cumulative Funding Status (\$M)			Implemented Projects				Benefiting Priority Populations ¹	
		Allocated	Awarded ²	Implemented	GHG Reduction (1,000 MTCO ₂ e)	Cost per GHG (\$/MTCO ₂ e)	Number of Projects	Intermediary Administrative Expenses (\$M) ³	(\$M)	%
San Francisco Bay Conservation and Development Commission	Climate Resilience Planning ⁷	\$4.7	\$4.1	\$4.1	– ⁴	–	20	–	\$0	0%
Total		\$14,656.0	\$11,684.0	\$9,021.5	70,020	–	542,038	\$132.1	\$4,549.4	51%

- 1 For programs that contract with intermediaries to administer projects, costs incurred for administration are not included when calculating benefits to priority populations. These costs are reported and included in the total implemented funds.
- 2 Per statute, some administering agencies may plan for future projects by selecting projects for funding in advance of receiving appropriations to fulfill those commitments. For this reason, in some instances “Awarded” funds may exceed “Allocated” funds. The High-Speed Rail Authority does not select or award funds, so this value represents implemented funds to date. The values reported here as “Awarded” also include “Implemented” funds.
- 3 Intermediary administrative expenses refer to funds provided to intermediaries (such as grantees, third-party administrators, or local agencies) that use part of the funding to cover the administrative costs associated with distributing incentives, implementing projects, or tracking and reporting data. Intermediary administrative expenses are reported as implemented when the final amount of the expense is known.
- 4 These programs do not have a quantified GHG emission benefit.
- 5 Estimated GHG emission reductions from the California High-Speed Rail project is 102 million MTCO₂e over its first 50 years of operating life, as detailed in the 2020 California High-Speed Rail Sustainability Report available at <https://hsr.ca.gov/programs/green-practices-sustainability/sustainability/>
- 6 GGRF funds provide a critical part of the total funds for the system, though it is difficult to estimate precisely what the ultimate GGRF investment will be, and consequently, a comparable “GGRF investment per ton of GHG reduced” metric.
- 7 Pending data corrections.