



REQUIRED SUPPORTING DOCUMENT CHECKLIST FOR STATE-DIRECTED REFEREE INSPECTION (CITATIONS/NST/CARB)

PURPOSE:

A State-Directed inspection is required for a CARB Enforcement citation, Notice to Submit to Testing (NST) letter, Referee Referral OBD result, or other Enforcement action. Selecting an incorrect inspection action/reason will delay the Referee review process.

ATTENTION:

A faded/missing [Emission Control Label \(ECL\)](#) and/or illuminated MIL will result in the immediate failure of an inspection. If the MIL is ON, please repair and operate the vehicle to meet the [OBD readiness criteria](#). Please ensure the ECL is readable, or that a replacement has been ordered from an OEM parts supplier.

PLEASE ELABORATE ON THE CITATION DETAILS AND/OR IF YOU RECEIVED A "REFEREE REFERRAL" OBD RESULT:

Please submit all of the applicable supporting documents listed in the checklist below:

- COPY OF WORK ORDER OR INVOICE THAT INCLUDES DETAILS OF THE REPAIRS PERFORMED ON THE ENGINE, EMISSIONS, EQUIPMENT, OBD SYSTEM, AND/OR ANY COMPONENTS DETAILED ON A CITATION.
- CITATION(S) AND/OR NOTICE TO SUBMIT TO TESTING LETTER(S)
- DEMONSTRATION OF COMPLIANCE FORM (OPTIONAL)
- PHOTO OF LICENSE PLATE (SIDE OR FRONT OF THE VEHICLE MUST BE PRESENT IN PHOTO)
- PHOTO OF ENGINE EMISSION CONTROL LABEL (ECL) - [INFO EXAMPLE PHOTOS](#)

ANILLEGIBLE /MISSING ECL WILL RESULT IN THE IMMEDIATE FAILURE OF AN INSPECTION.

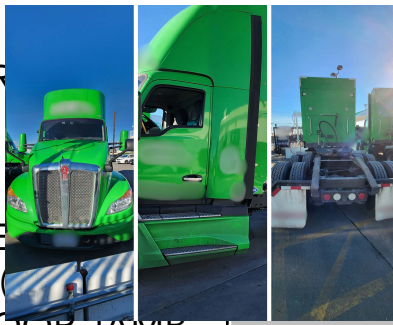
THE ECL CONTAINS ENGINE INFORMATION, SUCH AS, ENGINE FAMILY NAME (EFN), ENGINE MODEL YEAR (EMY), ENGINE MAKE, ENGINE SERIAL NUMBER, ENGINE TYPE AND EQUIPPED ENGINE EMISSIONS COMPONENTS.

- PHOTOS OF EMISSION CONTROL SYSTEMS LISTED ON ECL (MULTIPLE)

You can use your Engine Family Number and search on CARB's website <https://ww2.arb.ca.gov/new-vehicle-and-engine-certification-executive-orders> to find the engine components (if your Engine Emissions Control Label (ECL) does not list the components out)

PHOTOS OF VEHICLE EXTERIOR (MULTIPLE)

VIEW



AND BACK VIEW

PHOTO OF THE GROSS VEHICLE WEIGHT IDENTIFICATION NUMBER (GVWR) /VEHICLE IDENTIFICATION NUMBER (VIN) LOCATED ON THE DRIVER'S SIDE DOOR OR DOOR JAMB.

VIEW

PHOTO OF THE OBD CONNECTOR

VIEW