



Evening Community Meeting: Clean Transportation Incentives

May 19, 2026

Meeting Agreements

- Be respectful
- Take space, make space
- Listen to understand
- Consider equity

Evening Community Meetings

Monthly community meetings provide a space for community members to engage with California Air Resources Board staff.

Community Meeting Goals

- Hold a platform for community voices and priorities
- Brainstorm solutions for clean transportation needs
- Highlight important program information
- Foster ongoing communication between staff and communities

Today's Agenda

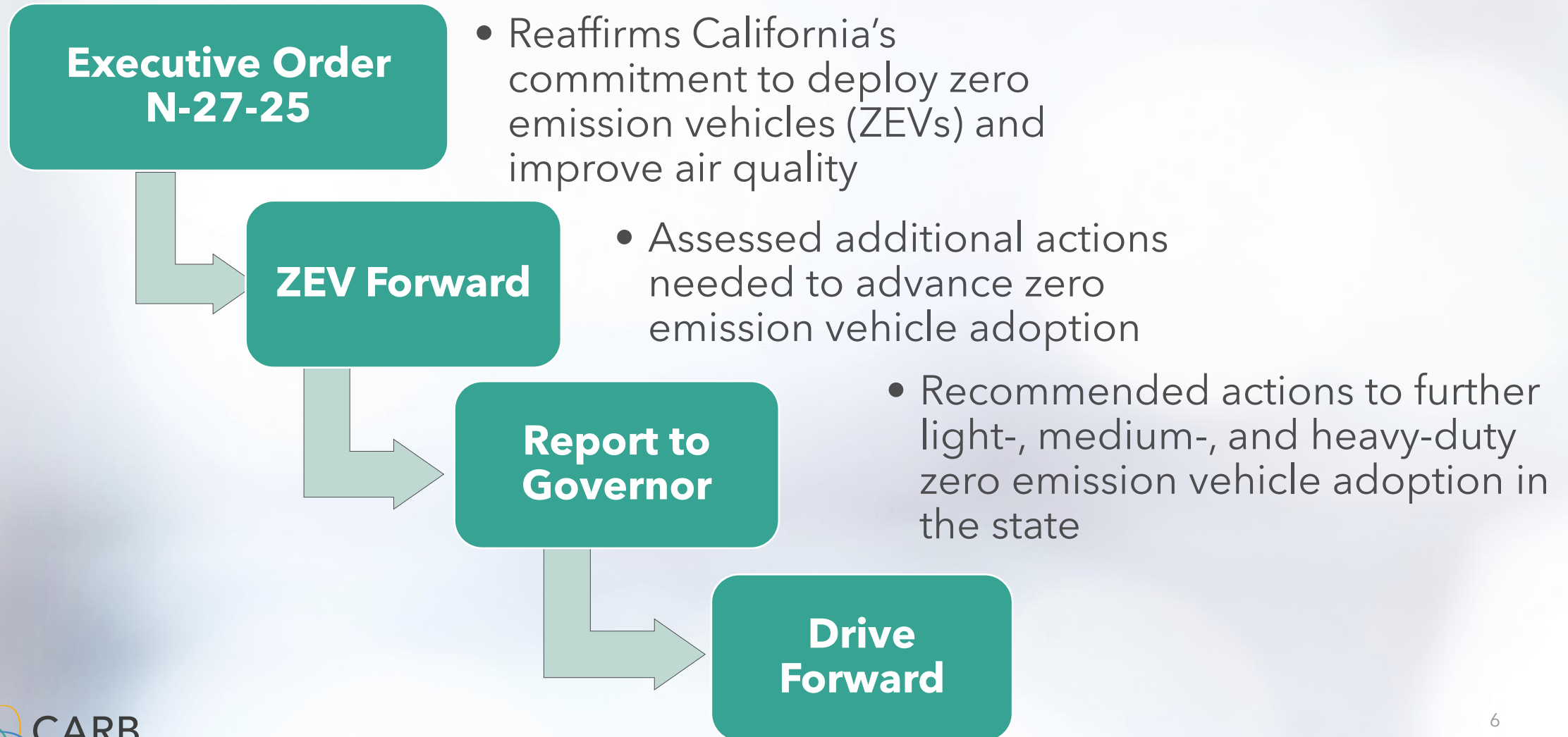
| Time | Session |
|------------------|--|
| 5:00 - 5:10 p.m. | Introduction |
| 5:10 - 5:30 p.m. | Overview of CARB Drive Forward Initiative & Recap of March Drive Forward Individual and Community Mobility Incentives Workshop |
| 5:30 - 5:50 p.m. | Zero-Emission Vehicle Workforce |
| 5:50 - 6:10 p.m. | Recap of April Health Analysis Consultants' Findings on Environmental Justice in Health Impact Assessments |
| 6:10 - 6:15 p.m. | Future Events, Wrap Up, and Next Steps |

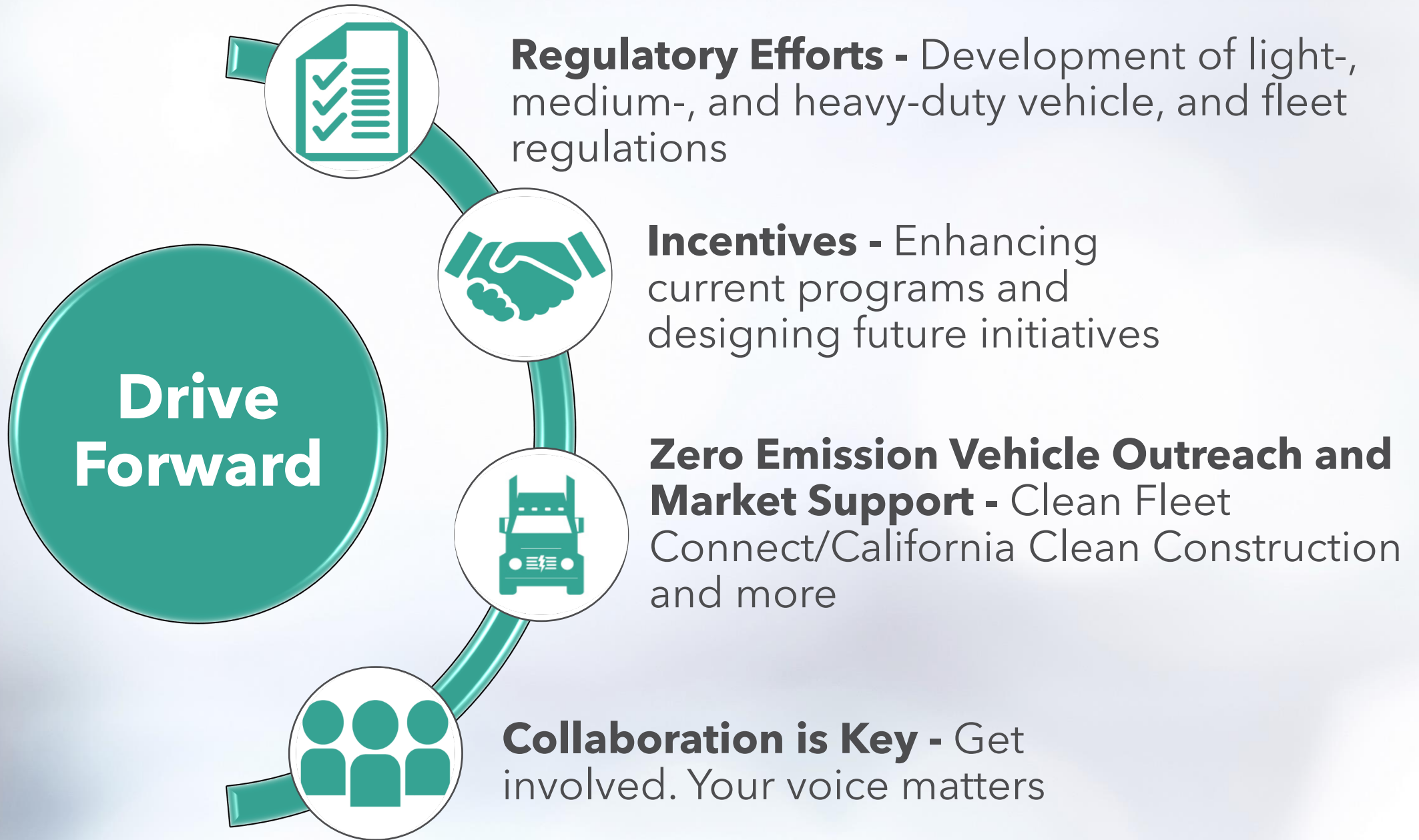


Overview of CARB Drive Forward Initiative

Larry Rillera

California Continues Forward





Drive Forward Light-duty Vehicle Program

Background:

- Executive Order N-27-25 directs CARB action on new light-duty vehicle emission standards

Goals:

- Reduce emissions from light-duty vehicles to protect the health of all Californians
- Design stringent but flexible programs that achieve cost-effective emission reductions
- Give incentives for early action
- Ensure real-world emission reductions



Scope of Potential Heavy-duty Rulemaking

- General focus on medium- and heavy-duty vehicles
 - Gross vehicle weight rating (GVWR) >8500 lbs.
- Suggestions from the public apply to:
 - Manufacturers
 - Vehicle owners and operators, and
 - Other entities that hire truck services



Drive Forward Outreach and Engagement

- **Inform** interested parties, local communities, business partners, and other stakeholders about new rulemakings and seek their input
- **Build partnerships** with organizations, community groups and agencies to expand outreach opportunities
- **Communicate** through direct public engagement, social media, and events
- **Collect feedback** to inform and shape rulemaking
- **Promote inclusion** through language access and outreach

Drive Forward Outreach Schedule

2025: Build
& Launch

- Portal launch with form
- Develop materials
- Workshops

2026: Deep
Engagement

- Fleet sessions
- In-person events
- Community meetings
- Tribal engagement
- Workshops

2027:
Follow-up

- Proposal release
- Share "What We Heard"
- Continue discussions
- Evaluate effort

Drive Forward Information

- Drive Forward Heavy-Duty Vehicle Standards and Strategies
- Drive Forward Light-Duty Vehicle Program
- Drive Forward Incentives



arb.ca.gov/drive-forward



Recap of March Drive Forward Individual and Community Mobility Incentives Workshop

Mikayla Elder

Governor's Proposed Budget for Clean Transportation Incentives*

Fiscal Year 2026-27 (millions)

Total Proposed Funding: ~\$235

| Incentive Project Category | Air Quality Improvement Fund | Greenhouse Gas Reduction Fund | Air Pollution Control Fund |
|---|------------------------------|-------------------------------|----------------------------|
| Medium- and Heavy-Duty Zero-Emission Projects | - | - | - |
| Air Quality Improvement Program | ~\$35 | - | - |
| Individual Mobility Projects | - | - | - |
| New Light-Duty Zero-Emission Vehicle Project: \$200 | - | \$115 | \$85 |

No proposed funding: Community Mobility Projects

Individual & Community Mobility Incentives

- Key highlights
 - Expand zero emission vehicle access, improve mobility in priority populations
 - \$2.7B invested; 627k vehicles; 197 community projects
 - Strong local partner networks ready to scale
 - Affordability benefits: low-cost for free mobility services
 - Stakeholder asks: flexible funding, simpler access, barrier removal



New Zero Emission Vehicle Program Overview

Program Policies

- One-time appropriation of \$200M for the 2026-27 fiscal year
- Partnership between CARB and automakers to distribute incentives at the point of sale: automakers will match incentive provided by the State
- First-time buyers or lessees of new or used zero emission vehicles
- MSRP cap from the Federal Inflation Reduction Act of 2022 (SUV \$80K or less, all other \$55K or less, and \$25K for used)

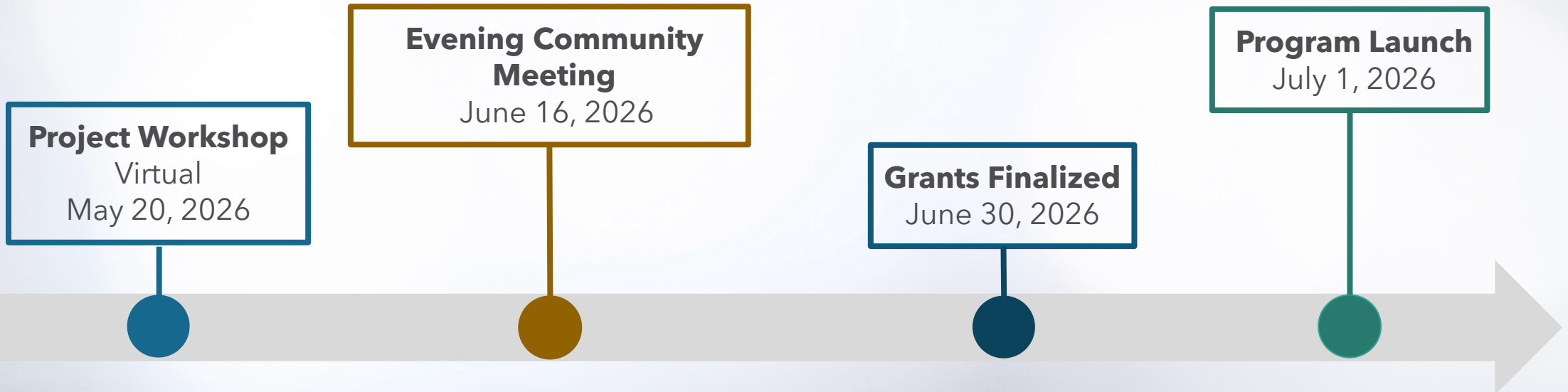
To Be Proposed

- Incentive amounts
- How to split funding between automakers
- Grant stacking with other state incentives
- How program will encourage vehicles to stay in state

New Zero Emission Vehicle Program Overview

- Broad support for the following:
 - Backfilling the federal tax credit with the \$200M allocation
 - Original equipment manufacturer match requirement
 - Rapid program launch
 - Stacking with Clean Cars 4 All and Driving Clean Assistance Program
 - Including used vehicles
 - Incentive amount preferences: 47% supported an incentive between \$3,000-\$4,000
 - 36% supported \$7,500 for new vehicles

Program Timeline*



Contacts

Larry Rillera, Staff Air Pollution Specialist

Larry.Rillera@arb.ca.gov

Mikayla Elder

Mikayla.Elder@arb.ca.gov

Comments and Questions



Use the raised hand function (#2 if calling in by phone)



Please state your name and affiliation, if any, before asking a question or making a comment



You may also email questions to cleantransportationincentives@arb.ca.gov










Zero-Emission Vehicle Workforce

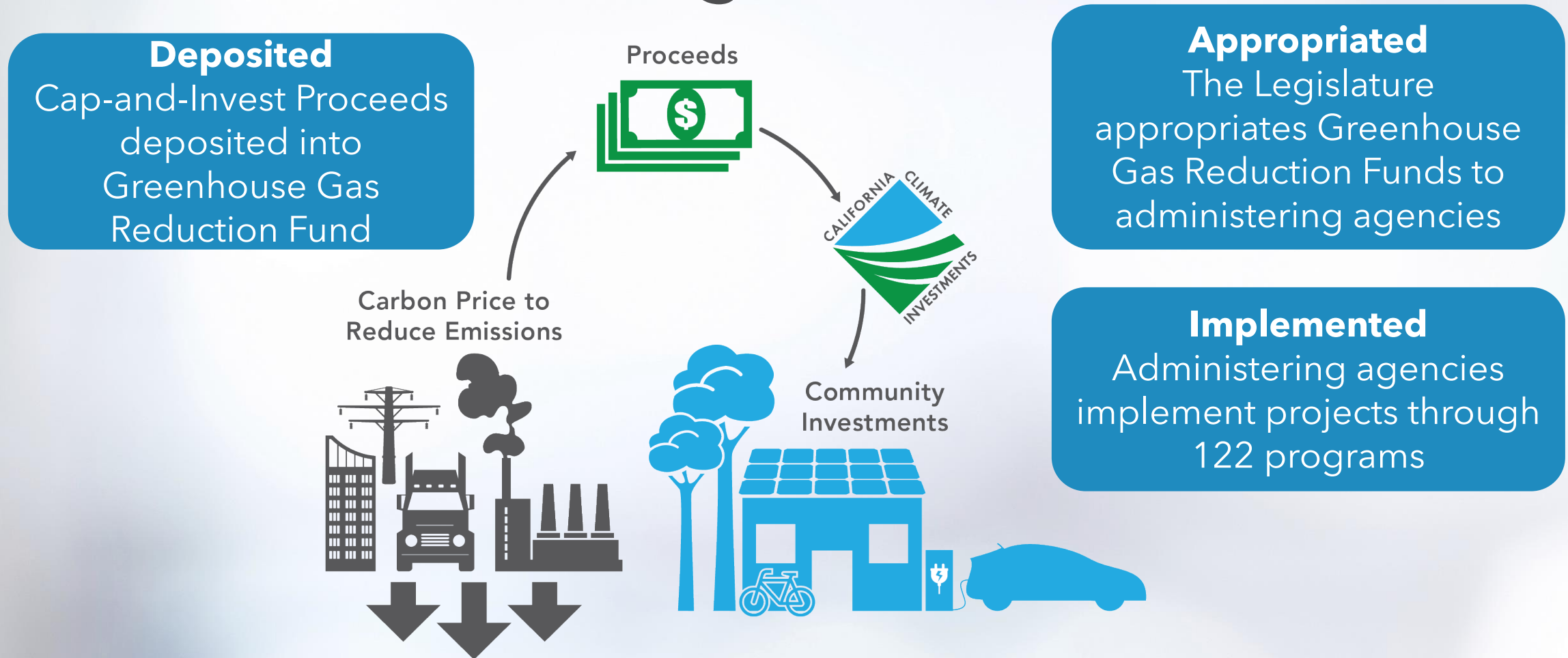
Hope Cupples and Larry Rillera

What is California Climate Investments?



| | |
|--|--|
|  AGRICULTURE |  TECHNICAL ASSISTANCE |
|  ENERGY |  TRANSPORTATION |
|  NATURE-BASED SOLUTIONS |  WASTE DIVERSION |
|  PLANNING AND RESEARCH |  WATER |
|  SUSTAINABLE COMMUNITIES |  WORKFORCE DEVELOPMENT |

California Climate Investments Funding Flowchart



Administering State Agencies



CALIFORNIA STRATEGIC GROWTH COUNCIL



California Climate Investments Transportation and Zero Emission Vehicle Workforce Programs



- **28** programs that fund clean vehicles and infrastructure
- **\$9.7B** spent on clean vehicles and infrastructure
- **1,528** jobs supported (2025)
- **6** programs (**\$388M**) include zero emission vehicle workforce training components



Examples of Zero Emission Vehicle Workforce Training Programs



| Agency | Program |
|--|--|
| California Workforce Development Board | <ul style="list-style-type: none"> • High Road Training Partnerships |
| California Energy Commission | <ul style="list-style-type: none"> • Inclusive, Diverse, Equitable, Accessible, and Local (IDEAL) Zero-Emission Vehicle (ZEV) Workforce Pilot |
| California Air Resources Board | <ul style="list-style-type: none"> • Adult Education & Vocational School Zero-Emission Vehicle Technology Training Project • Sustainable Transportation Equity Project • Clean Mobility Options |
| Strategic Growth Council | <ul style="list-style-type: none"> • Transformative Climate Communities |

Zero Emission Vehicle Workforce Development Ecosystem

State Agencies

- Labor and Workforce Development Agency guides statewide strategy
- Other state agencies implement zero emission vehicle programs

Local Agencies and Educational Institutions

- Provide training and connect workers with jobs
- Local Workforce Development Boards, America's Job Centers
- Community Colleges, Regional Occupational Programs

Nonprofit and Community-Based Training Providers

- Offer training and wraparound services
- Outreach and access

Pre-Apprenticeships and Apprenticeships

- Prepare workers for careers in the trades

Workforce Supply + Workforce Demand

Building the Workforce

- Training institutions prepare workers for zero emission vehicle occupations
- Outreach
- Access



Generating Workforce Demand

- Job opportunities
- Job quality
- Workforce standards



Why Both Matter

- Trained workers need pathways
- Alignment ensures zero emission vehicle workforce is economically strong, equitable, and scalable

Zero Emission Vehicle Workforce: Analysis

California's Zero-Emission Vehicle Workforce:
Workforce Landscape Study

DRAFT — FOR INTERNAL REVIEW


Prepared for:
California Air Resources Board

Prepared by:
Foundation for California Community Colleges
BW Research Partnership
Center of Excellence for Labor Market Research


DRAFT — Version 1.0 | March 2026



National Career Clusters Framework

5

| | | | |
|---|---|---|---|
|  |  |  |  |
| Aligns CTE with Labor Market and Federal Workforce Data Systems | Connects classroom learning, career exploration, and industry readiness | Provides a shared national structure for federal reporting | Strengthens alignment between education and industry |

- Assess Zero Emission Vehicle Training Programs
- Foundation for California Community Colleges

- Need for vehicle operation technicians
- Automotive Career Days Partnership

- 2011 California Technical Education Standards
- Clean energy/transportation

Zero Emission Vehicle Workforce: High Road



- Training and certification of electric vehicle (EV) charger installation

FOR IMMEDIATE RELEASE
April 7, 2026

**Clean Technology Training Trust and University of Michigan
Partner to Advance the Nation's Medium- and Heavy-Duty ZEV
Mechanic Workforce**

Building on Decades of IBEW-University of Michigan Collaboration, CTTT and U-M EVC Unite to Open the Door Wider for the Next Generation of ZEV Mechanics

- Pre-hire/apprenticeship training
- International Brotherhood of Electrical Workers and University of Michigan EV Center

Zero Emission Vehicle Workforce: Community



- Adult education and vocation
- Pathway to zero emission vehicle training and jobs

**Zero-Emission Bus (ZEB)
Workforce Development Roadmap
Tribal Community Workshop**

Share **Tribal perspectives** on workforce needs in California's transition to **zero-emission transit**.

What is this project?

The UCLA Labor Center and GO-Biz are developing a workforce roadmap to support the statewide transition to zero-emission buses (ZEBs). This virtual workshop invites **Tribes, Tribal representatives, and Tribal-serving organizations** to share insights on workforce needs, training opportunities, and transportation priorities for the ZEB Workforce Development Roadmap.

Workshop Goals

- Gather Tribal perspectives**
Understand workforce needs, skills gaps, and training opportunities.
- Identify workforce and economic opportunities**
Explore career pathways and infrastructure jobs in clean transportation.
- Inform statewide workforce planning**
Help shape California's Zero-Emission Bus Workforce Development Roadmap.

- ZEB Workforce Roadmap
- Pathways for tribes for ZEB operation and service

Contact

Hope Cupples, Air Pollution Specialist

Sustainable Transportation and Communities Division

Hope.Cupples@arb.ca.gov

Larry Rillera, Staff Air Pollution Specialist

Mobile Source Control Division

Larry.Rillera@arb.ca.gov

Comments and Questions



Use the raised hand function (#2 if calling in by phone)



Please state your name and affiliation, if any, before asking a question or making a comment



You may also email questions to cleantransportationincentives@arb.ca.gov



Recap of April Health Analysis Consultants' Findings on Environmental Justice in Health Impact Assessments

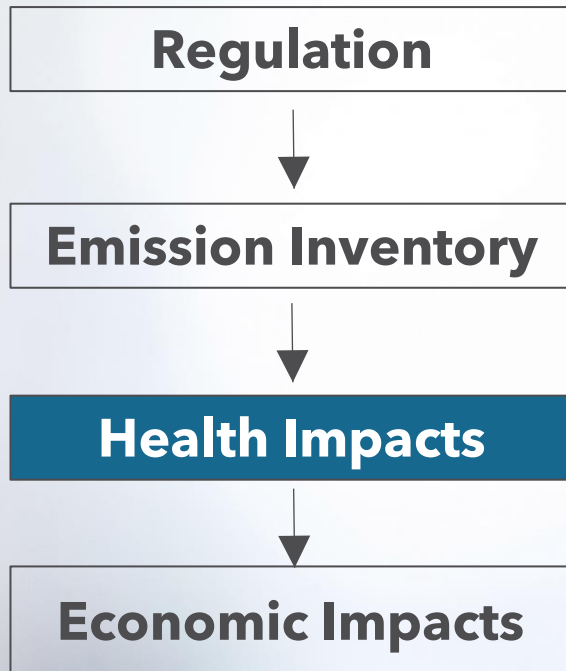
Pradeep Prathibha

Current Health Impact Analysis

- Performed for all CARB regulations and programs
- Quantifies **small subset of full suite of health benefits** (fine particulate matter (PM_{2.5}) only)
- Based on established peer reviewed methods

[CARB's Methodology for Estimating the Health Effects of Air Pollution](#)

Current Health Impact Analysis (cont.)



1. Regulatory staff estimate **how much emissions decrease** in the future.
2. We relate changes in emissions to changes in health outcomes **statewide** and by **CA air basin**.
3. Economics staff estimate the valuation of the health benefits.

How does BenMAP estimate health impacts?

Environmental Benefits Mapping and Analysis Program

Concentration Response Function (CRF)

$$(1 - e^{-\beta \times \text{change in pollutant concentration}}) \times \text{population} \times \text{baseline incidence rate} = \text{change in health outcome}$$

Methodology for Health Impact Analysis

Δ Emissions \propto Δ Concentrations \propto Δ Health Outcomes

U.S. EPA's Benefits-per-ton (BPT) Method

Time- & resource-intensive approach to link emissions to health outcomes

Change in PM_{2.5} and NO_x emissions



Change in ambient concentrations



Monetized benefit (\$ per ton)

CARB's Incidence-per-Ton (IPT) Method

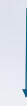
California-specific, air basin level approach when air quality data are limited

Change in PM_{2.5} and NO_x emissions



IPT factors

(proportionality between emissions and health outcome by air basin)



Avoided health burden (cases per ton)

Health Endpoints in CARB's Methodology



12 health outcomes from exposure to PM_{2.5}

| In use until 2023 |
|------------------------------------|
| Cardiopulmonary Mortality |
| Cardiovascular Hospital Admissions |
| Respiratory Hospital Admissions |
| Asthma Emergency Room Visits |

| Added in 2023 |
|---------------------------------------|
| Cardiovascular Emergency Room Visits |
| Respiratory Emergency Room Visits |
| Acute Myocardial Infarction, Nonfatal |
| Asthma Onset |
| Asthma Symptoms / Exacerbation |
| Lung Cancer Incidence |
| Work Loss Days |
| Alzheimer's Disease |
| Parkinson's Disease |

| Proposed in 2026 |
|--------------------------------|
| Cardiac Arrest |
| Stroke |
| Allergic Rhinitis (Hay Fever) |
| Minor Restricted Activity Days |

CARB Board Directed Expansion of Health Analysis

Board Resolution 20-13

Goal: Develop Methods for More Comprehensive Evaluation of Health Benefits

New qualitative and quantitative approaches

Assess health impacts in disadvantaged communities

Quantify additional pollutants

Update health endpoints from pollution exposure

Assess and communicate Greenhouse Gas reduction benefits

Ongoing and Longer-Term Work

CARB-Funded Studies of California Populations

- **Metabolic Health** and criteria pollutants
Diabetes incidence, medication use, emergency room visits, hospitalizations, death
- **Birth Outcomes** and criteria pollutants
Pre-term birth, low birth weight, Autism Spectrum Disorder
- **Neurodegeneration** and criteria pollutants
Parkinson and Alzheimer's Diseases, cognitive decline
- **Neurodevelopment** and criteria pollutants
Student standardized test performance
- **Life Expectancy** and PM_{2.5}
Change in life expectancy over time
- **Respiratory Symptoms** and train, port emissions
Use of medication puff and ED visits in Southern California

Expanding CARB Analyses

Qualitative Health Analysis

- Complement quantitative assessments with comprehensive evaluation of additional impacts, co-benefits, and cumulative burdens, integrating racial equity and community insights.

Health Equity Analysis

- Develop methods to quantify differences in health outcomes for subpopulations

Health Consultants

- Review available community-focused health analysis methods
- Recommend approaches to expand CARB's health impact analyses

Health Analysis Consultants



Max Aung, PhD
USC Keck School of Medicine



**Marianthi-Anna
Kioumourtzoglou, ScD**
Brown School of Public Health



Sandrah Eckel, PhD
USC Keck School of Medicine



Jason Su, PhD
UC Berkeley School of
Public Health

Health Consultants: Objective

- Review CARB's current health analysis methodology for evaluating health benefits of air pollution reduction programs
- Review existing science and methodologies related to air pollution health impacts in diverse communities and subgroups
- Provide independent, individual recommendations* on options to integrate scientific findings and methods into CARB's current approach

* Recommendations do not reflect the views of CARB staff and do not consider legal and resource constraints.

Health Consultant Recommendations



1. Population subgroups

Race, ethnicity, or overburdened communities at greatest risk for health effects of air pollution



2. Health outcomes

of high concern for tracking and health analysis in overburdened communities



3. Societal factors

(e.g. income, education attainment) impacting health outcomes from air pollution

Contact

Pradeep Prathibha, PhD, Manager

Health & Ecosystem Analysis Section, Research Division

Pradeep.Prathibha@arb.ca.gov

Comments and Questions



Use the raised hand function (#2 if calling in by phone)



Please state your name and affiliation, if any, before asking a question or making a comment



You may also email questions to cleantransportationincentives@arb.ca.gov

Upcoming Meetings & Events

| Events | Date |
|---|-----------|
| Valley Vision Community Listening Session | May 20 |
| CARB Board Meeting | May 28-29 |
| Evening Community Meeting | Jun. 16 |

Future Events, Wrap-Up, and Next Steps

Follow CARB on Social Media



[Twitter \(X\)](#)



[Instagram](#)



[Facebook](#)



[LinkedIn](#)



[Threads](#)



[Bluesky](#)



[TikTok](#)



[YouTube](#)

Contacts

Evening Community Meetings

CleanTransportationIncentives@arb.ca.gov

Noemi Vitela

Noemi.Vitela@arb.ca.gov

Adalina Paez

Adalina.Paez@arb.ca.gov

Funding Plan

[Engagement Opportunities](#)

Amritpal Sandhu

AQIP Funding Plan Lead

Amritpal.Sandhu@arb.ca.gov

Drive Forward

DriveForward@arb.ca.gov