



GCF task force

California Air Resources Board

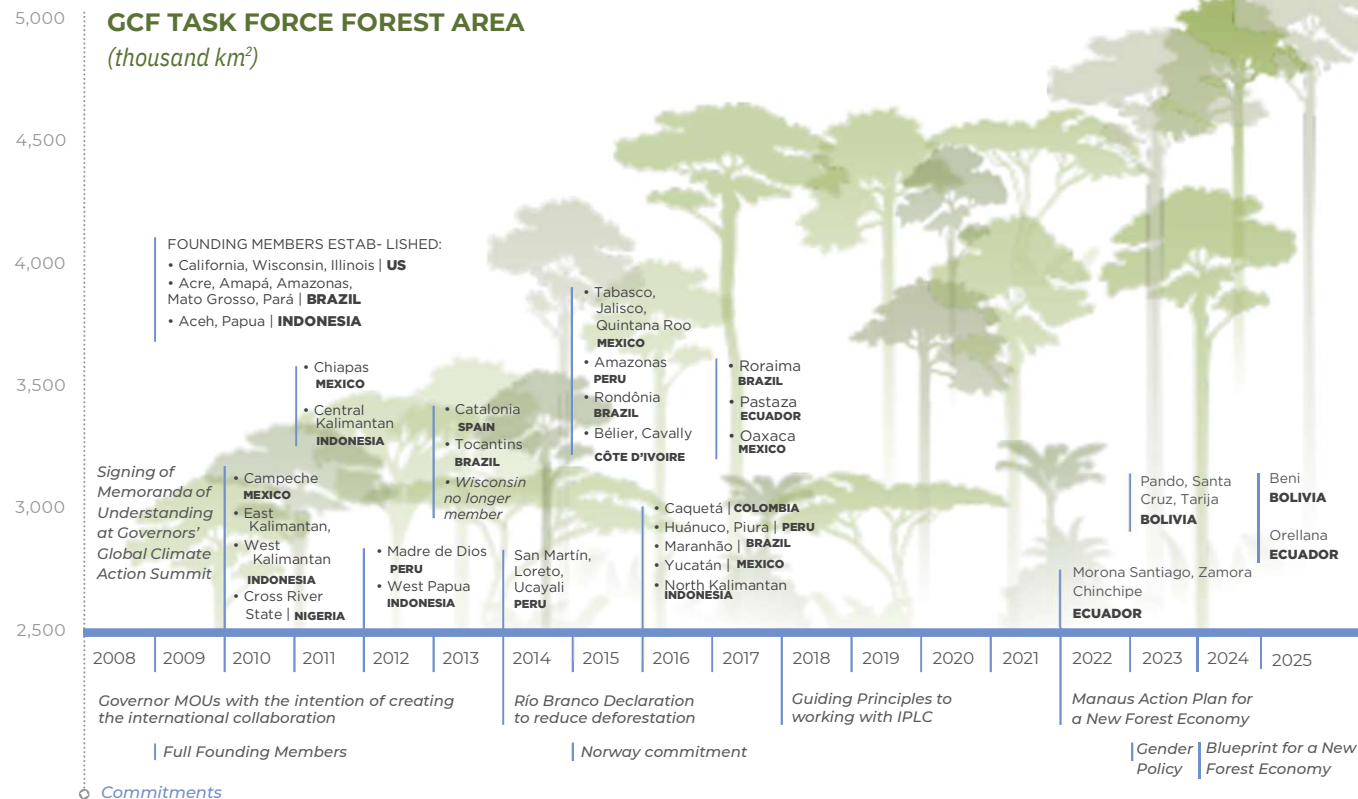
Land Use Change Public Forum

November 6, 2025

Jason Gray, Project Director, GCF Task Force
Emmett Institute on Climate Change and the Environment
UCLA School of Law

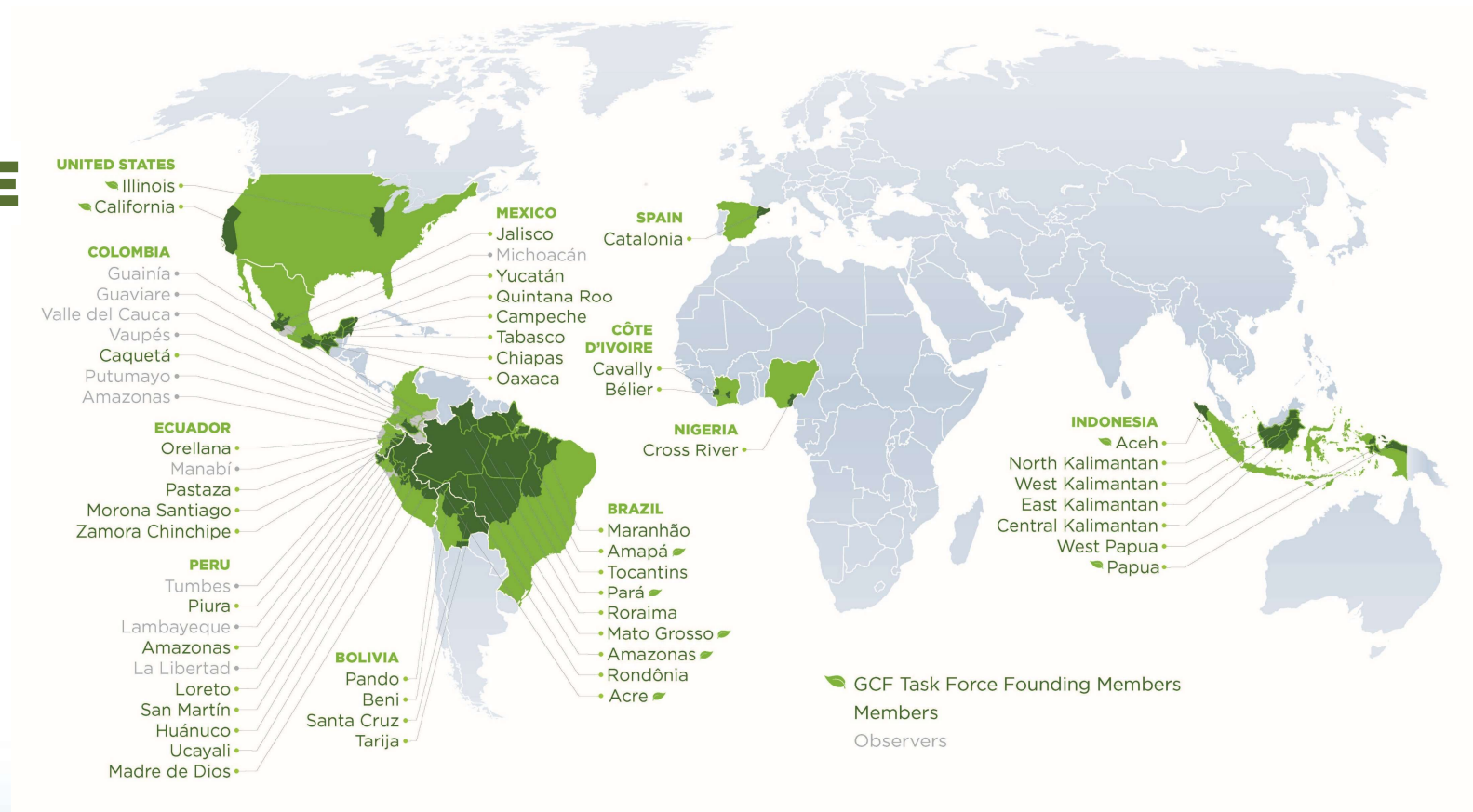
SUBNATIONAL GOVERNMENT LEADERSHIP ON FORESTS AND CLIMATE

that began with
California and 9 states
and provinces (US,
Brazil, Indonesia)



GCF
task force

GLOBAL PRESENCE



GCF
task force



KEY COMPONENTS of a New Forest Economy

- **Integrating needs** of rural and urban communities
- **Sustainable** and higher-value **supply chains**
- **Diverse economic opportunities** from nontimber forest products to payments for ecosystem services/carbon markets to innovation hubs
- **Sustainable financing** to set up these systems across entire states and provinces

THEORY of Change



**People and
relationships**



**Jurisdictional Approach at
Subnational Level**



**Policy innovation and
experimentation**

An aerial photograph of a lush mangrove forest. A dark, winding river or canal cuts through the dense green trees. Several small, isolated tree islands are visible in the water. The text 'GCF task force' is overlaid in white on the right side of the image. The background image has a vertical bar on the left side with two colored squares: a dark green one on top and a blue one below it.

GCF
task force

*Thank
You!*