



Office of Community Air Protection

Community Air Protection Incentives

Public Workshop to Discuss Proposed Phase II Revisions to the Community Air Protection (CAP) Incentives Guidelines

April 29, 2025

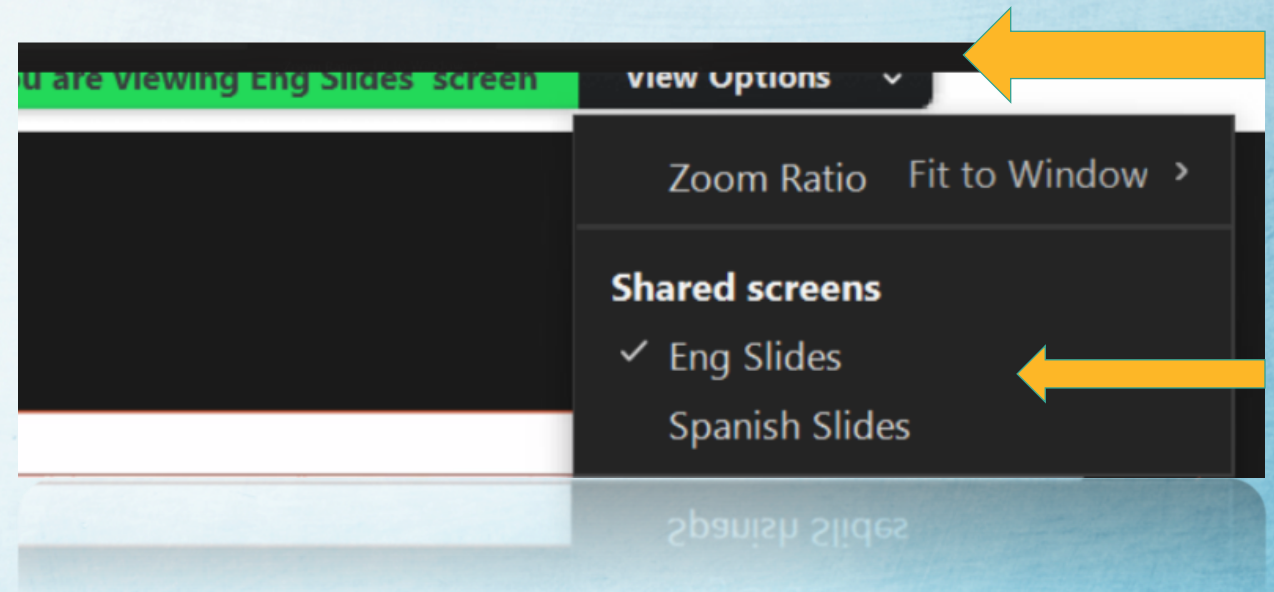
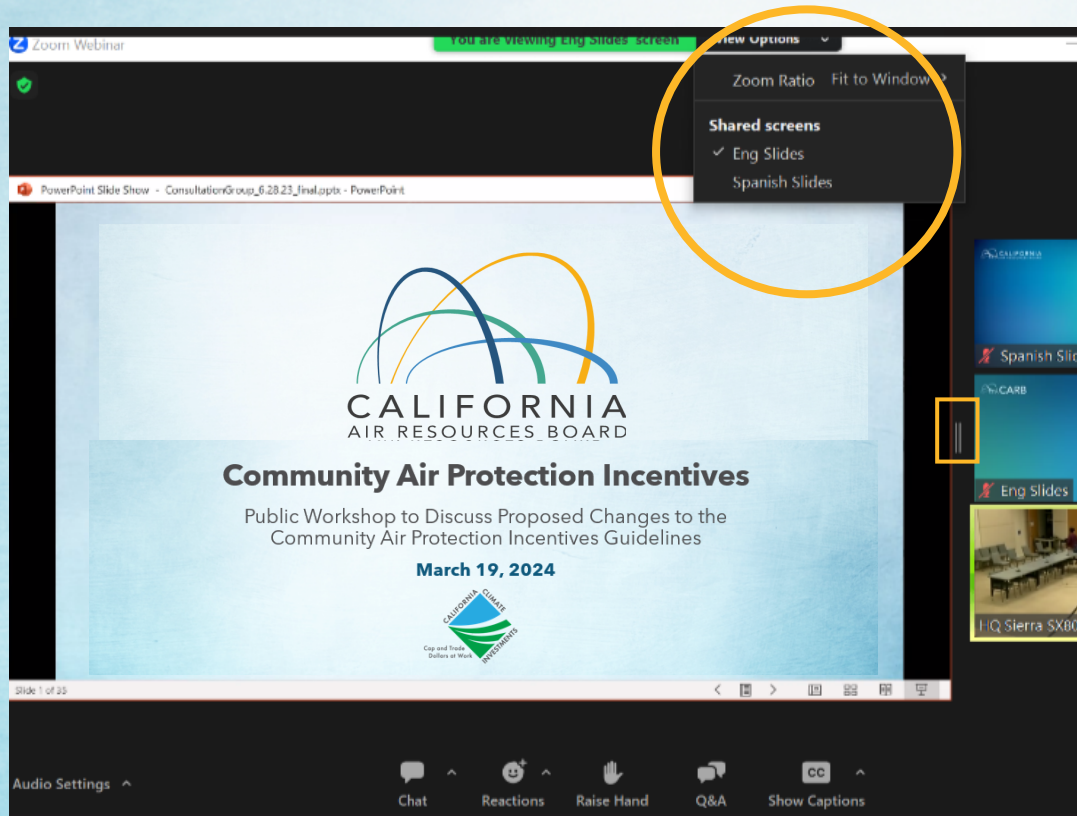
Choose language for audio and slides

At the bottom of
your screen:

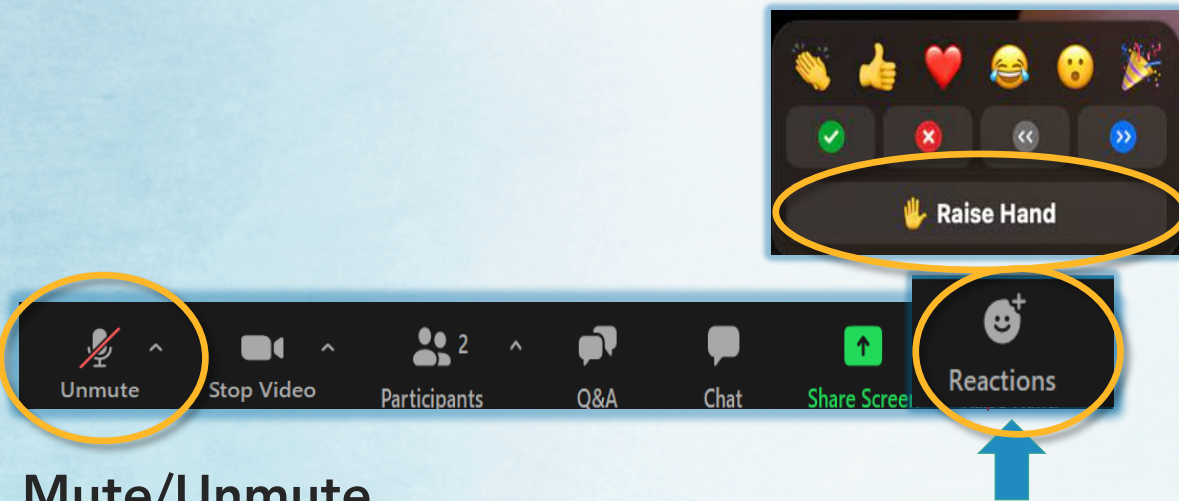


How to Toggle Between English and Spanish Screens

At the top of your screen:

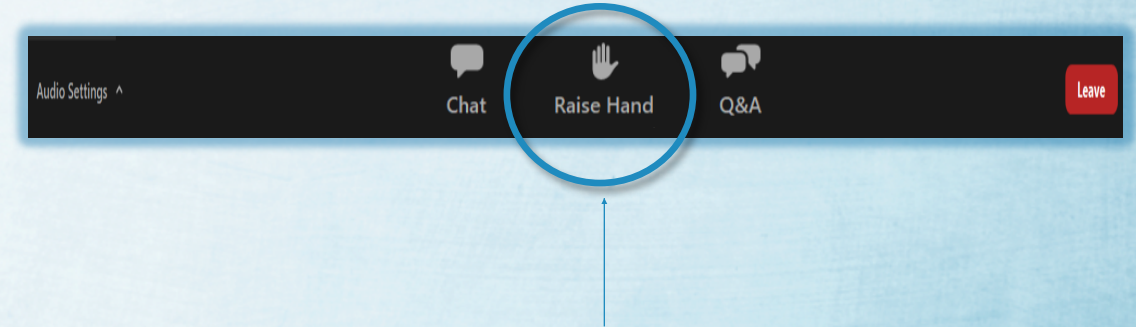


Participating Virtually



Mute/Unmute

Click on Reactions and Raise hand and we will call on you.



Click on Reactions and Raise hand and we will call on you if you would like to ask a question or speak.



On the phone: Dial #2 to raise hand and *6 unmute to speak.

Tech Support



Contact: AB617Incentives@arb.ca.gov

Please reach out for help if you have any technical challenges.

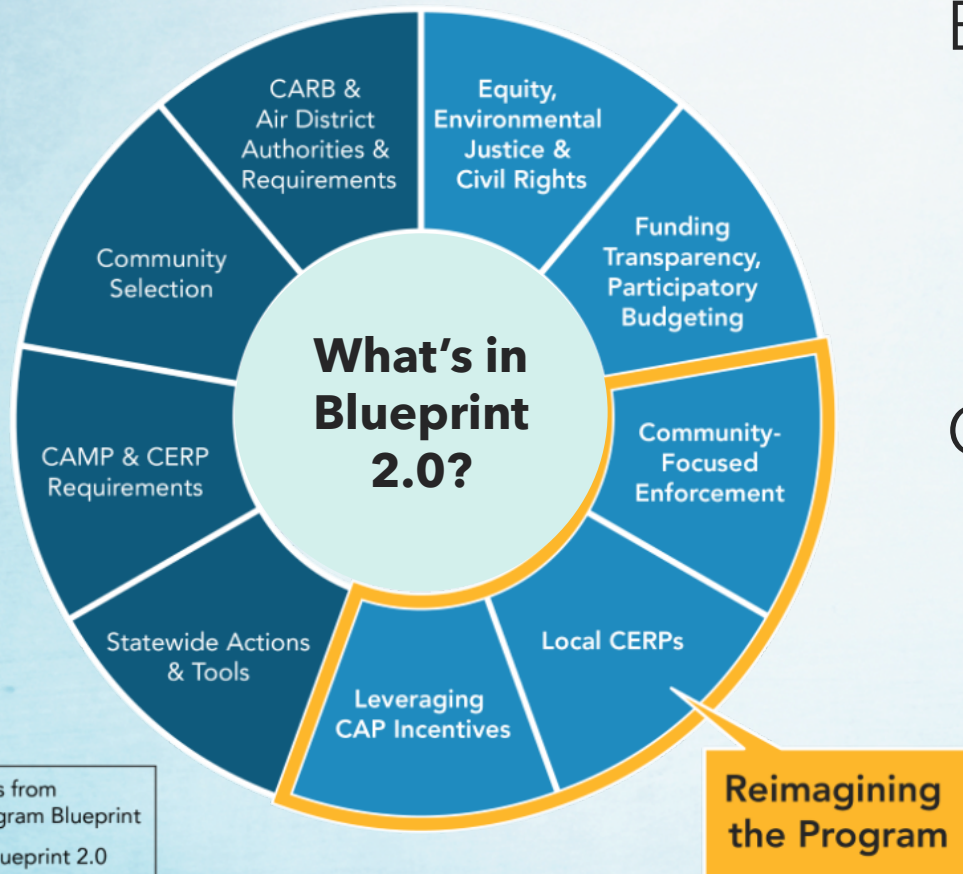
Meeting Norms

- Be respectful
- Take space, make space
- Listen to understand
- Consider how equity applies when assessing incentives strategies

Agenda

- Welcome
- Overview of Community Air Protection Incentives Program and Recap of Phase I Guidelines Revision
- CAP Incentives Phase II Guideline Revisions
 - Reflect Statutory Requirements for Program Overview and Background
 - Align Program Administration with Moyer
 - New Woodsmoke Reduction Chapter
 - Reorganize and Clarify Appendices
- Open Discussion
- Next Steps and Close

Community Air Protection Program



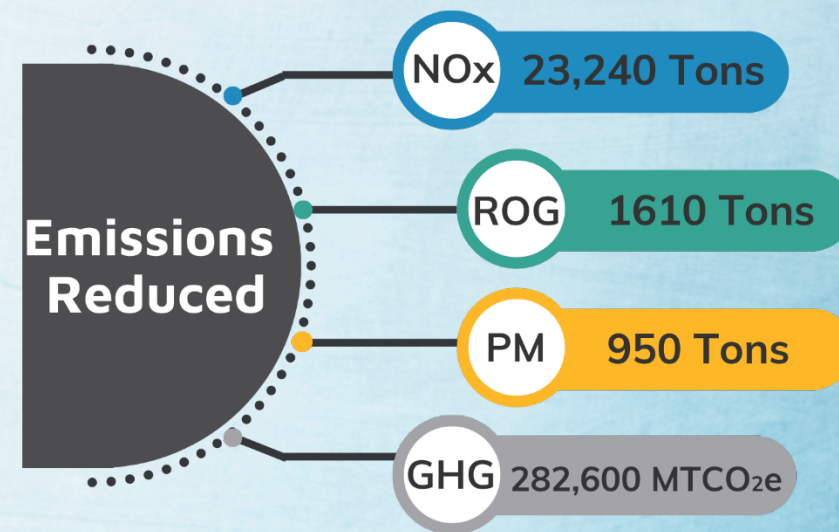
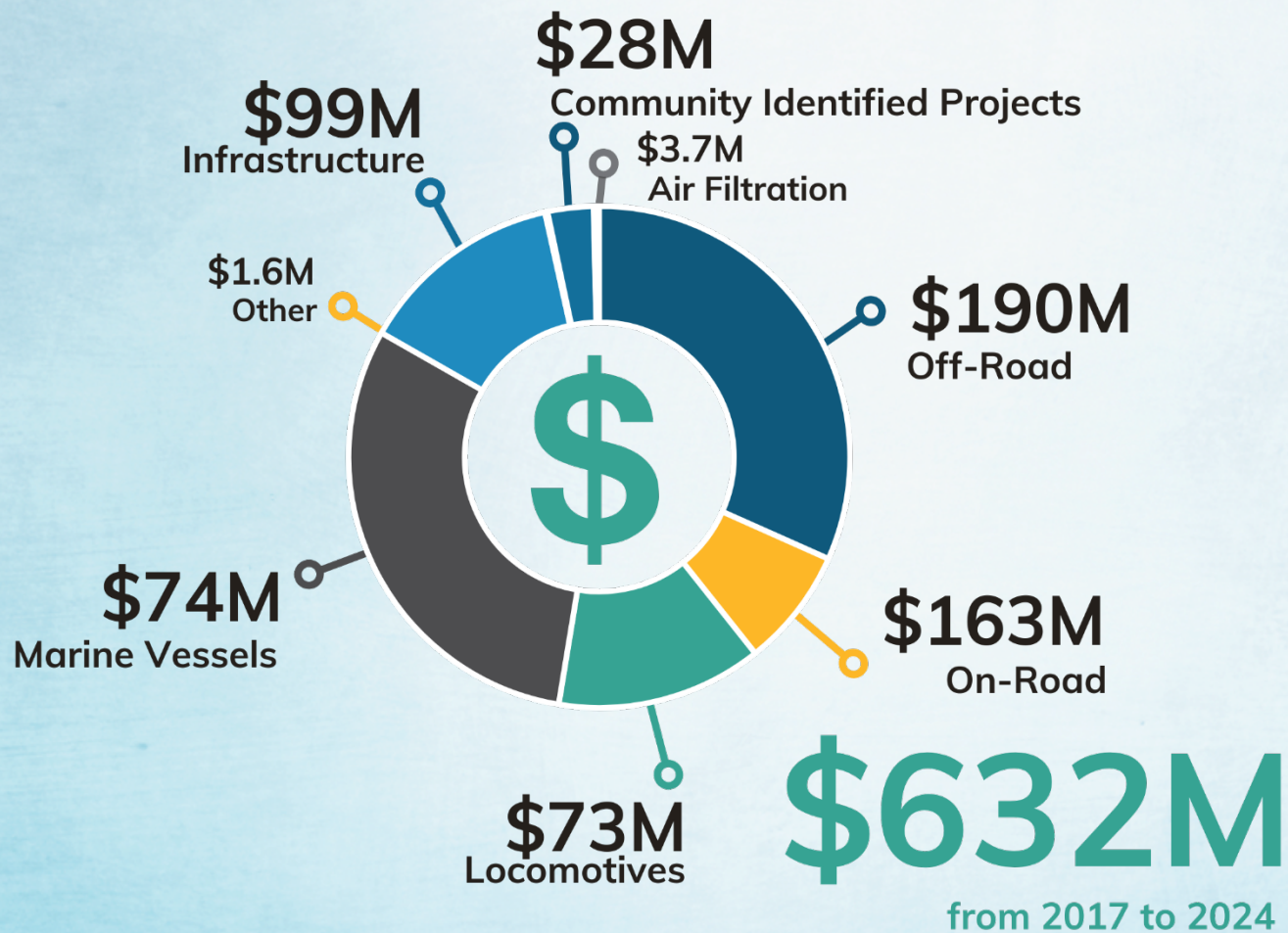
Blueprint 2.0

- Guidance for developing and maintaining partnership with communities
- Adopting an equity lens in AB 617 work

CAP Incentives Guidelines Revisions

- Better align with Blueprint 2.0
- Identify new pathways to leverage CAP Incentives
- Enable communities statewide to benefit from approved project plans

Reducing Emissions in Communities



The CAP Incentives Guidelines Update Process

April 2024

- **Published the 2024 CAP Incentives Guidelines via Executive Officer memo to Board**
 - Included plan for Phase II update in alignment with future Carl Moyer Program updates and the addition of Woodsmoke Reduction chapter

May 2024-
February 2025

- **Reviewed updates to Moyer Guidelines and worked with air districts on Phase II of guideline revisions**
 - Air District workgroup meeting(s) and optional Air District and CARB staff 1:1 meetings
 - Shared a preliminary draft of CAP Incentives Guidelines with Air Districts for consideration

April 2025

- **Published Draft CAP Incentives Guidelines for 30-day public comment period**
- **Host public workshop to discuss draft language and public comments**

May 2025

- **Publish the CAP Incentives Guidelines Phase II revisions under commitments made under April 2024 Executive Officer memo to Board**

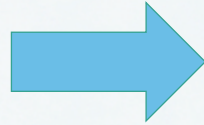


CAP Incentives Guidelines: Phase II Revisions

Overview of Phase II Revisions



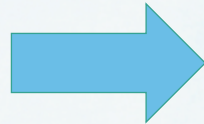
Program Overview
and Background (Ch. 1)



- Clarify statutory requirements and update funding target information



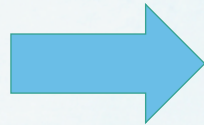
Program Administration
(Ch. 3)



- Updates to administration costs, processes, and definitions for clarification and alignment with Moyer updates



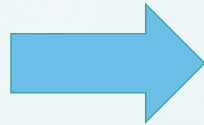
Woodsmoke Reduction
(Ch. 15)



- New chapter for Woodsmoke Reduction project type



Appendices, A - G



- Organize and clarify information by source categories, programs, statutory requirements, and funding guidance
- Update definitions and references (including in chapters as needed).



Aligning with Carl Moyer Program

- Increase percentage of funding to support air district administration:
 - 6.5% to 12.5% for air districts with 1 million or more population
 - 12.5% to 15% for air districts with less than 1 million population
- Process expansions, clarifications, and flexibilities on:
 - Grants
 - Air District Implementation
 - Application approval process options
 - Project Contracts, Eligibility Types, and Costs
 - Project Requirements (including delayed scrappage)
 - Reporting



Grants

- Grant Liquidation Timeline:
 - **Same:** Option to extend liquidation deadline with extended grant term
 - **Same:** Two-year deadline to request disbursement
 - **New:** After disbursement deadline, district has six years to fully liquidate
- Clarification on undisbursed funds not requested by disbursement deadline toward redirection of funds to another district
- Clearly delineate source(s) of CAP Incentives funding, annual timeline for funding, and process of allocation to disbursements
- Pathway to request CARB approval to use unused administrative funds toward projects



Implementation

- Flexibility to use prior guideline versions for funding projects
- Further clarify project selection and ranking process(es)
- Co-funding guidance update and website collaboration with Carl Moyer Program
- Potential for CARB approval on slight modifications of chapters
 - Replaces the case-by-case process (not statutorily required for CAP Incentives)



Reporting and Program Review

- Reflect recently updated 2024 CCI Funding Guidelines requirements (including Appendix B)
 - Removal of Mid-Cycle Report requirement
 - Update Table with Reporting Dates (as needed)
 - Include references to recommendations on outreach, community engagement, and workforce development
- Clarification on program reviews and desk file reviews



Woodsmoke Reduction Overview

- Derived from air district project plans and CAPCOA statewide woodsmoke reduction program
- Offers additional flexibility
 - Allows device replacement *or* retirement
 - Extends eligibility to some EPA certified devices
 - Allows natural gas and propane as replacement devices
 - Provides greater incentives for switching to a zero emissions (electric) device



Highlights of Eligibility and Eligible Costs

- Eligible costs include
 - Cost of new device (including sales tax)
 - Installation (including parts, materials, permits, and labor)
 - Natural gas/carbon monoxide/smoke detectors
 - Removal and disposal of old device
- Low-income applicants and those residing in disadvantaged communities or on tribal lands are eligible for an enhanced incentive

Applicant income/geographic designation	Existing device	Replacement device	Maximum eligible funding amount
Standard ¹	Wood or pellet stove, insert, or fireplace	Wood or pellet stove or insert, natural gas stove or insert, propane stove or insert	Up to \$2,500 or 85% of eligible costs, whichever is lower
Standard	Wood or pellet stove, insert, or fireplace	Electric stove or insert	Up to \$2,500 or 100% of eligible costs, whichever is lower
Low-income applicant ²	Wood or pellet stove, insert, or fireplace	Wood or pellet stove or insert, natural gas stove or insert, propane stove or insert	Up to \$7,000 or 100% of eligible costs, whichever is lower
LIC, DAC, tribal land			
Low-income applicant	Wood or pellet stove, insert, or fireplace	Electric stove or insert	Up to \$7,000 or 100% of eligible costs, whichever is lower
LIC, DAC, tribal land			
Standard	Wood or pellet stove, insert, or fireplace	Electric heat pump	Up to \$7,000 or 100% of eligible costs, whichever is lower
Low-income applicant	Wood or pellet stove, insert, or fireplace	Electric heat pump	Up to \$12,000 or 100% of eligible costs, whichever is lower
LIC, DAC, tribal land			

	Applicant income/geographic designation	Existing device	Replacement device	Maximum eligible funding amount
Device replacement	Standard ¹	Wood or pellet stove, insert, or fireplace	Wood or pellet stove or insert, natural gas stove or insert, propane stove or insert	Up to \$2,500 or 85% of eligible costs, whichever is lower
	Standard	Wood or pellet stove, insert, or fireplace	Electric stove or insert	Up to \$2,500 or 100% of eligible costs, whichever is lower
	Low-income applicant ²	Wood or pellet stove, insert, or fireplace	Wood or pellet stove or insert, natural gas stove or insert, propane stove or insert	Up to \$7,000 or 100% of eligible costs, whichever is lower
	LIC, DAC, tribal land			
	Low-income applicant	Wood or pellet stove, insert, or fireplace	Electric stove or insert	Up to \$7,000 or 100% of eligible costs, whichever is lower
	LIC, DAC, tribal land			
	Standard	Wood or pellet stove, insert, or fireplace	Electric heat pump	Up to \$7,000 or 100% of eligible costs, whichever is lower
	Low-income applicant	Wood or pellet stove, insert, or fireplace	Electric heat pump	Up to \$12,000 or 100% of eligible costs, whichever is lower
	LIC, DAC, tribal land			

Device replacement	Applicant income/geographic designation	Existing device	Replacement device	Maximum eligible funding amount
	Standard ¹	Wood or pellet stove, insert, or fireplace	Wood or pellet stove or insert, natural gas stove or insert, propane stove or insert	Up to \$2,500 or 85% of eligible costs, whichever is lower
	Standard	Wood or pellet stove, insert, or fireplace	Electric stove or insert	Up to \$2,500 or 100% of eligible costs, whichever is lower
	Low-income applicant ²	Wood or pellet stove, insert, or fireplace	Wood or pellet stove or insert, natural gas stove or insert, propane stove or insert	Up to \$7,000 or 100% of eligible costs, whichever is lower
	LIC, DAC, tribal land			
	Low-income applicant	Wood or pellet stove, insert, or fireplace	Electric stove or insert	Up to \$7,000 or 100% of eligible costs, whichever is lower
	LIC, DAC, tribal land			
	Standard	Wood or pellet stove, insert, or fireplace	Electric heat pump	Up to \$7,000 or 100% of eligible costs, whichever is lower
	Low-income applicant	Wood or pellet stove, insert, or fireplace	Electric heat pump	Up to \$12,000 or 100% of eligible costs, whichever is lower
	LIC, DAC, tribal land			

	Applicant income/geographic designation	Existing device	Replacement device	Maximum eligible funding amount
Device replacement	Standard ¹	Wood or pellet stove, insert, or fireplace	Wood or pellet stove or insert, natural gas stove or insert, propane stove or insert	Up to \$2,500 or 85% of eligible costs, whichever is lower
	Standard	Wood or pellet stove, insert, or fireplace	Electric stove or insert	Up to \$2,500 or 100% of eligible costs, whichever is lower
	Low-income applicant ²	Wood or pellet stove, insert, or fireplace	Wood or pellet stove or insert, natural gas stove or insert, propane stove or insert	Up to \$7,000 or 100% of eligible costs, whichever is lower
	LIC, DAC, tribal land			
	Low-income applicant	Wood or pellet stove, insert, or fireplace	Electric stove or insert	Up to \$7,000 or 100% of eligible costs, whichever is lower
	LIC, DAC, tribal land			
	Standard	Wood or pellet stove, insert, or fireplace	Electric heat pump	Up to \$7,000 or 100% of eligible costs, whichever is lower
	Low-income applicant	Wood or pellet stove, insert, or fireplace	Electric heat pump	Up to \$12,000 or 100% of eligible costs, whichever is lower
	LIC, DAC, tribal land			

	Applicant income/geographic designation	Existing device	Replacement device	Maximum eligible funding amount
Device replacement	Standard ¹	Wood or pellet stove, insert, or fireplace	Wood or pellet stove or insert, natural gas stove or insert, propane stove or insert	Up to \$2,500 or 85% of eligible costs, whichever is lower
	Standard	Wood or pellet stove, insert, or fireplace	Electric stove or insert	Up to \$2,500 or 100% of eligible costs, whichever is lower
	Low-income applicant ²	Wood or pellet stove, insert, or fireplace	Wood or pellet stove or insert, natural gas stove or insert, propane stove or insert	Up to \$7,000 or 100% of eligible costs, whichever is lower
	LIC, DAC, tribal land			
	Low-income applicant	Wood or pellet stove, insert, or fireplace	Electric stove or insert	Up to \$7,000 or 100% of eligible costs, whichever is lower
	LIC, DAC, tribal land			
	Standard	Wood or pellet stove, insert, or fireplace	Electric heat pump	Up to \$7,000 or 100% of eligible costs, whichever is lower
	Low-income applicant	Wood or pellet stove, insert, or fireplace	Electric heat pump	Up to \$12,000 or 100% of eligible costs, whichever is lower
	LIC, DAC, tribal land			



Reorganization and Clarification

- Reorganize Appendix A by Moyer's source category specific sections
- Clarify differences between Moyer and CAP Incentives
- Consolidate Prop 1B Program guidance into new Appendix B
- Appendix C (previously B) updated to be consistent with recently-revised CCI Funding Guidelines
- Appendix D (previously C) updated definitions to be consistent with Blueprint 2.0, Carl Moyer Guidelines, and CCI Funding Guidelines



Open Discussion



Use the raised hand function (#2 if calling in by phone)



Please state your name and affiliation before asking a question and making a comment.

Learn More!

To learn more about the CAP Incentives Program and how other AB 617 funding sources work together to support the Community Air Protection Program as a whole, visit **CommunityHub 2.0**



Next Steps

- **May 2025:** Publish CAP Incentives Guidelines Phase II Revisions
- **After publication:** Follow with updates to CAP Incentives quantification methodologies

Contact Us

Contact the CAP Incentives team at: ab617incentives@arb.ca.gov

- For questions and suggestions
- For requests for more information
- For meeting requests