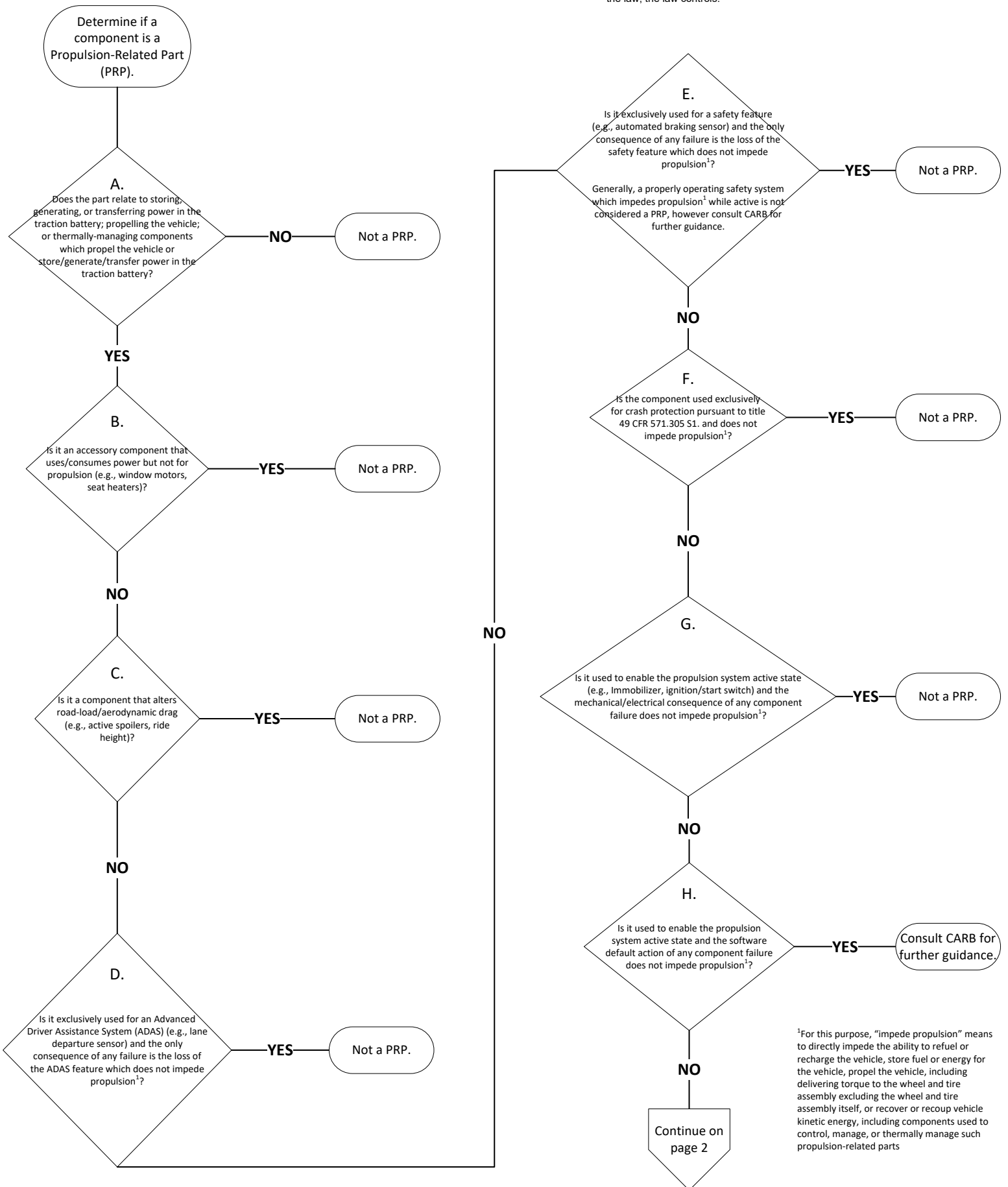


# Propulsion-Related Part Determination Guidance

Version 1.0 (New 2/2025) Page 1 of 2

**DISCLAIMER:** This document is intended solely for guidance regarding compliance with Propulsion-Related Parts warranty requirements under California Code of Regulations, title 13, sections 1962.5, 1962.8, and 1969 and does not extend or impose requirements on any other person. It is not a regulation and it does not create, expand, limit, waive, or interpret any legal rights or obligations. It does not alter or modify the terms of any law and does not constitute legal advice. It is not intended, and should not be construed, to define the legal relationship between CARB and the regulated community. For any conflicts between this document and the law, the law controls.

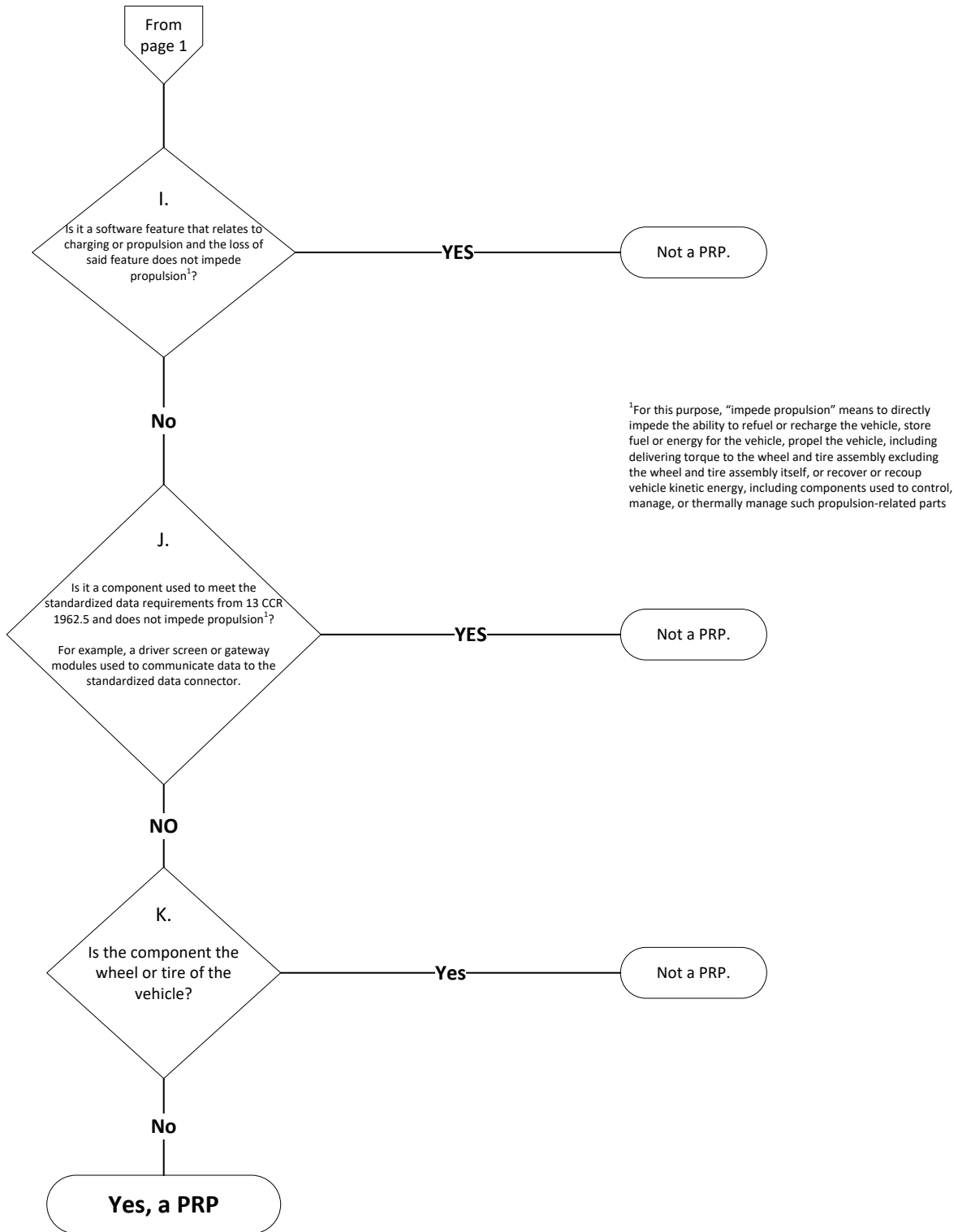


<sup>1</sup>For this purpose, "impede propulsion" means to directly impede the ability to refuel or recharge the vehicle, store fuel or energy for the vehicle, propel the vehicle, including delivering torque to the wheel and tire assembly excluding the wheel and tire assembly itself, or recover or recoup vehicle kinetic energy, including components used to control, manage, or thermally manage such propulsion-related parts

# Propulsion-Related Part Determination Guidance

Version 1.0 (New 2/2025) Page 2 of 2

**DISCLAIMER:** This document is intended solely for guidance regarding compliance with Propulsion-Related Parts warranty requirements under California Code of Regulations, title 13, sections 1962.5, 1962.8, and 1969 and does not extend or impose requirements on any other person. It is not a regulation and it does not create, expand, limit, waive, or interpret any legal rights or obligations. It does not alter or modify the terms of any law and does not constitute legal advice. It is not intended, and should not be construed, to define the legal relationship between CARB and the regulated community. For any conflicts between this document and the law, the law controls.



From 13 CCR 1962.8(b), the ZEV Warranty Regulation:

“Propulsion-related part” means any system, component, or part whose failure will directly impede the ability to refuel or recharge the vehicle, store fuel or energy for the vehicle (excluding the battery, for purposes of this section), propel the vehicle, including delivering torque to the wheel and tire assembly excluding the wheel and tire assembly itself, or recover or recoup vehicle kinetic energy, including components used to control, manage, or thermally manage such propulsion-related parts. These parts include drive motor(s), wheel motor(s), inverter(s), converter(s), on-board charging system components, fuel cell stack components, refueling and fuel tank components, fuel cell air and fuel delivery components, regenerative braking system components, and the power electronics, electronic control units, and thermal management systems of such components and systems providing propulsion, thermal management, recharging and energy storage, conversion, and related diagnosis within the vehicle. Advanced driver assistance systems and safety-related components and systems are not considered “propulsion-related parts” for the purpose of this regulation.