

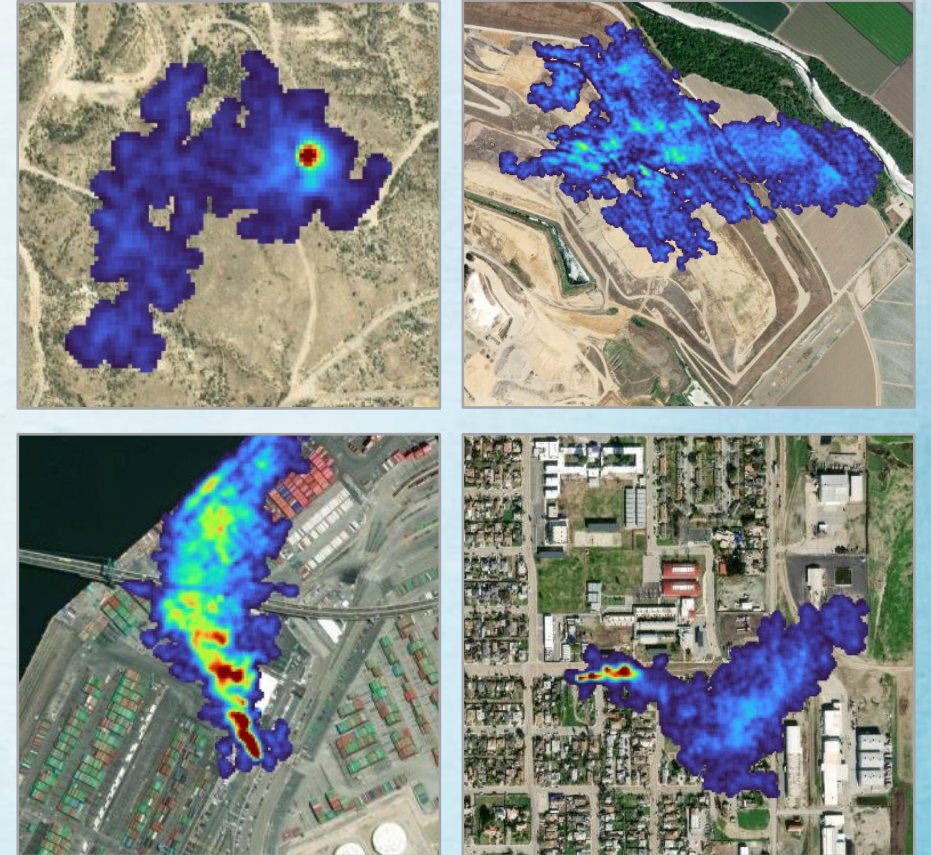


California Satellite Methane Project: Community Engagement Efforts

February 13, 2025

Background on the California Satellite Methane Project (CalSMP)

- Methane is a powerful, non-toxic greenhouse gas
 - Second largest contributor to climate change after carbon dioxide
 - While methane does not present acute health effects, co-pollutants might be present with potential for health impacts.
 - Climate and potential co-pollutant emissions drive effort to address plumes, and keep communities informed
- Over 10 years of research has demonstrated effectiveness of remote sensing methane plume detection technology
- First by aircraft, now through a commercial satellite company to be selected by a competitive bidding process
- Primary goal is to use satellite data to enforce methane regulations, protect public health, and address leaks



Examples of methane plumes detected during aircraft campaigns.

Community Grant Overview

- \$5 million in grant funding has been approved by the State Legislature to develop and implement community engagement plans.
- In the coming months, CARB plans to release a grant solicitation to begin the process to distribute this funding
- Goal: To fund community outreach efforts to ensure satellite methane observations are accessible, understandable, and useful to communities
- We anticipate the grant may be managed by a third-party administrator that will:
 - Award sub-grants to and oversee CBOs in providing recommendations including community engagement plan
 - Recommendations on protocols to inform communities when leaks are found
 - Provide training and assistance for communities to interpret the data

Upcoming Pre-Solicitation Meeting

- CARB is planning to announce a virtual public meeting to gather input on the upcoming community engagement grant solicitation
- Tentatively planned for late March
- Topics that will be discussed:
 - Background information on the California Satellite Methane Project
 - Summary of the community engagement grant solicitation
 - Feedback on the solicitation's specific topics and goals

Contact Us

California Satellite Methane Project:

calcmp@arb.ca.gov

Key CARB Staff:

- Elizabeth Scheehle, Chief, Research Division
- Jorn Herner, Branch Chief
- Jason Schroeder, Air Resources Supervisor
- Steve Zelinka, Air Resources Supervisor
- Valerie Carranza, Air Pollution Specialist (se habla Español)
- Dorothy Fibiger, Staff Air Pollution Specialist