



# Advanced Clean Fleets Regulation

## Drayage Truck Requirements

California Code of Regulations, Title 13, Section 2014.1

### Drayage Trucks General Requirements Factsheet

**Date:** June 30, 2024

Complete details of the drayage truck requirements are set forth in the [ACF Final Regulation Order - Drayage Truck Requirements \(ca.gov\)](#). In the case of any discrepancy between this document and the regulation order, the regulation language applies.

### Background

On April 28, 2023, the California Air Resources Board (CARB) approved for adoption the Advanced Clean Fleets Regulation (ACF), which establishes requirements for drayage trucks that transport cargo to and from [California's seaports and intermodal railyards](#).

### Key Elements of the Regulatory Requirements

- Legacy drayage trucks are non-zero emission drayage trucks with 2010 or newer model year engines and that were reported in CARB's Truck Regulations Upload, Compliance, and Reporting System (TRUCRS) on or before December 31, 2023.
- Beginning January 1, 2024, only zero-emission (ZE) drayage trucks can be newly reported as drayage trucks in TRUCRS; and legacy drayage trucks must visit a California seaport or intermodal railyard at least once each calendar year.
- Beginning January 1, 2025, drayage truck owners must annually report odometer reading, engine family, and engine model year for all legacy drayage trucks that are 12 years old or older; and any legacy drayage truck reported in TRUCRS must not exceed its minimum useful life threshold.<sup>1</sup> Beginning 2025, non-ZE trucks will be removed from drayage by March 31<sup>st</sup> of each calendar year if they did not meet the annual visit requirement or if they have exceeded their minimum useful life threshold.
- By 2035, all drayage trucks reported in TRUCRS must be ZE.

### Resources

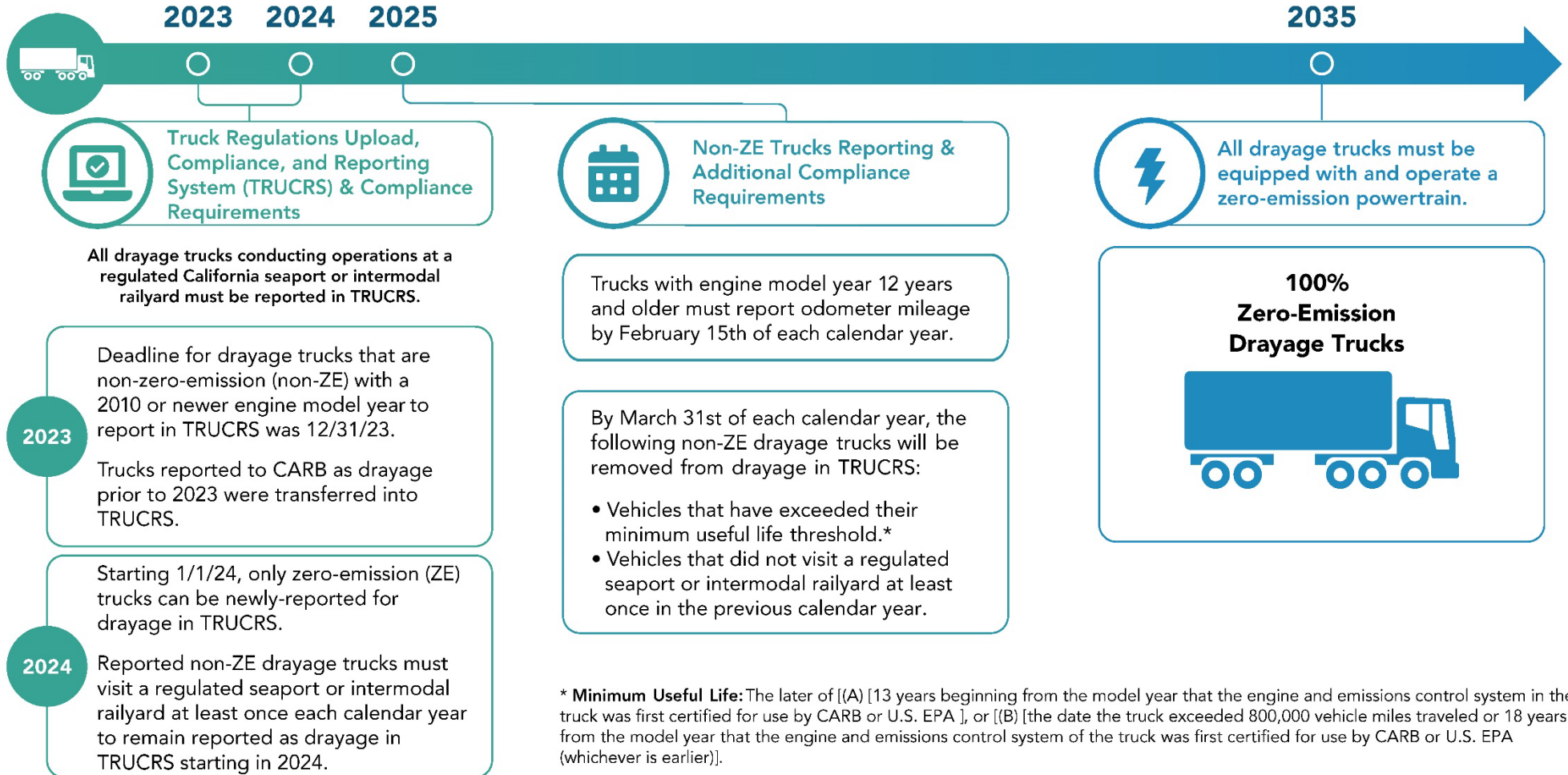
- For more factsheets and additional information, please visit the Advanced Clean Fleets website at <https://ww2.arb.ca.gov/our-work/programs/advanced-clean-fleets>
- For information about the availability of ZE trucks and incentives funding, please visit <https://ww2.arb.ca.gov/our-work/programs/truckstop-resources/zev-truckstop>.

---

<sup>1</sup> The later of [(A) [13 years beginning from the model year that the engine and emissions control system in the truck was first certified for use by CARB or U.S. EPA ], or [(B) [the date the truck exceeded 800,000 vehicle miles traveled or 18 years from the model year that the engine and emissions control system of the truck was first certified for use by CARB or U.S. EPA (whichever is earlier)]. If the vehicle no longer has its originally equipped engine, or the model year of the originally equipped engine is not able to be determined, the model year of the vehicle less one year must be used to determine when the thresholds described in subsections (A) and (B) are met.

# Drayage Trucks Requirements and Compliance Deadlines

The Advanced Clean Fleet Regulation contains the following requirements and compliance deadlines for drayage trucks.



For questions or additional information about the Drayage Truck Requirements, please contact [drayage@arb.ca.gov](mailto:drayage@arb.ca.gov).