

EXECUTIVE ORDER VR-402-G

Morrison Bros. Phase I Enhanced Vapor Recovery (EVR) System
For Aboveground Storage Tanks (AST)

EXHIBIT 1
Equipment List

Equipment

Manufacturer/Model Number

Emergency Vent

(Figures 1A)

Morrison 244O WX YYYY AVEVR

W represented by:

dash (-) = female threads

M = male threads

F = flange mounted

S = with screen

X represented by:

S = with screen

A = Aluminum

dash (-) = Blank

YYYY represented by:

Numerical values between 0 to 9

<u>Male / Female</u>	<u>Flanged*</u>	<u>Size</u>	<u>Setting</u>
0030		2"	16 oz./sq.in.
0060		3"	16 oz./sq.in.
0170	0170	4"	16 oz./sq.in.
0900		5"	16 oz./sq.in.
0200	0050	6"	8 oz./sq.in.
0400	0075	6"	16 oz./sq.in.
0600	0100	8"	8 oz./sq.in.
0700	0200	8"	16 oz./sq.in.
	0300	10"	2.5 oz./sq.in.
	0400	10"	8 oz./sq.in.
	0500	10"	16 oz./sq.in.

***Note:** For flange mounted models use gasket material made by Fibreflex. More information is available at <http://www.fibreflex.com>.

Equipment

Manufacturer/Model Number

Overfill Prevention Valve and Drop Tube Assembly

Overfill Prevention Valve
(Figures 1B)

Morrison 9095W X YYYY - AVEVR

W represented by:

A = A Series

C = C Series

X = X Series

X represented by:

dash = blank

V = Nickel Plated

A = AA Series or for fuels with S.G. less 0.72

YYYY represented by:

Numerical values between 0 to 9

	<u>Size</u>	<u>Description</u>
9100	2"	Base Model
9200,7200	2"	Base Model
9300	3"	Base Model
5200	2"	Direct Fill
3200	2"	Remote Fill
3300	3"	Remote Fill
4200,6200,6800	2"	Remote Fill

Drop Tube
(Figures 1C)

Morrison 419X - -YYZZ 1TEVR

X represented by:

dash = Aluminum

A = Anodized Aluminum

YY represented by:

Numerical values between 0 to 9

	<u>Tube Size</u>
02	2"
03	3"

ZZ represented by:

Numerical values between 0 to 9

As length in Feet

Equipment

Manufacturer/Model Number

Spill Container *

Non-Integral Spill Container*

(Figure 1D)

Morrison 516 XX - 0400 ACEVR

X represented by:

dash = female threads

O = Offset female threads

M = male threads

MO = Offset male threads

***NOTE:** Optional for protected tanks with integral spill container.

Integral Spill Container

Convault Drain Valve

(Figure 1E)

Drain Plug

(Figure 1F)

Material: Galvanized, Brass, or Stainless Steel

Thread Type: NPT Pipe Fitting

***NOTE:** Either is required for protected tanks with integral spill container.

Non-Rotatable Product Adaptor

(Figure 1G)

Morrison 927 - - - YYYY AA-EVR

YYYY represented by:

Numerical values between 0 to 9

	<u>Thread</u>	<u>Cam & Groove</u>
	<u>Size</u>	<u>Size</u>
0200	2"	2.5"
0300	3"	4"
0400	4"	4"

Equipment

Manufacturer/Model Number

Product Adaptor Dust Caps

(Figure 1H)

Morrison 735DC X YYYY ACEVR

X represented by:

dash = Aluminum

A = Anodized Aluminum

YYYY represented by:

Numerical values between 0 to 9

	<u>Size</u>
2000	2"
2500	2.5"
3000	3"
4000	4"

Product Coupler

(Figure 1I)

Morrison 928 - - - YYYY ACEVR

YYYY represented by:

Numerical values between 0 to 9

	<u>Thread Size</u>	<u>Cam & Groove Size</u>
0150	1.5"	2"
0200	2"	2.5"
0300	3"	4"

Note: During fuel deliveries, a MORRISON coupler (928 Series) shall be used with a MORRISON product adaptor (927 Series). The MORRISON 928 Series coupler can be provided by the fuel supplier or provided by the GDF operator.

Non-Rotatable Vapor Adaptor

(Figure 1J)

Morrison 323 - - - YYYY AAEVR

YYYY represented by:

Numerical values between 0 to 9

	<u>Thread Size</u>	<u>Cam & Groove Size</u>
0300	3"	4"
0400	4"	4"

Vapor Adaptor Dust Caps

(Figure 1K)

Morrison 323C YYYY ACEVR

YYYY represented by:

Numerical values between 0 to 9

	<u>Size</u>
0100	4"

Equipment

Manufacturer/Model Number

Dedicated Gauging Port

(Figure 1L)

NOTE: Per CP-206, an Above Ground Storage Tank (AST) shall include a dedicated gauging port for determining the amount of gasoline. The determination shall be accomplished manually, mechanically, or electronically

Gauging Port and Drop Tube Assembly (Optional)

Gauging Port Adapter

Morrison 305 X YYYY AAEVR / 305 X YYYY ACEVR

X represented by:

blank = Brass Adaptor

C = Cap

GSP = Cap / Adapter Kit

YYYY represented by:

Numerical values between 0 to 9

	<u>Size</u>
<i>0000,2000</i>	<i>2"</i>
<i>0100</i>	<i>4"</i>

Drop Tube

(Figures 1C)

Morrison 419X -- YZZ 1TEVR

X represented by:

dash = Aluminum

A = Anodized Aluminum

YY represented by:

Numerical values between 0 to 9

	<u>Tube Size</u>
<i>02</i>	<i>2"</i>

ZZ represented by:

Numerical values between 0 to 9

As length in Feet

Equipment

Manufacturer/Model Number

**Mechanical Tank Gauging
(Optional)**

Morrison Z18 XXX YYYY AGEVR

Z represented by:

Numerical values between 8 and 9

8 = Gauge w/o Alarm

9 = Gauge w/ Alarm

X represented by:

dash = Male thread

C = Custom Clock Face Label (Male Thread)

F = Female thread

CF = Custom Clock Face Label (Female Thread)

MEF = Metric (Female Thread)

MET = Metric (Male Thread)

DP = Dual Level Points (Male Thread)

DPF = Dual Level Points (Female Thread)

YYYY represented by:

Numerical values between 0 to 9

	<u>Size</u>	<u>Description</u>
<i>0100, 0000</i>	<i>2"</i>	<i>with Standard Float</i>
<i>0400, 2000</i>	<i>2"</i>	<i>with Drop Tube Float</i>

Note: Custom clock face label model number.

AAABCXXXXXY 2L

AAA = Figure No. = 818 or 918

B = Units of Measure

G = Gallons

L = Liters

C = Shape of Tank

Equipment

Manufacturer/Model Number

Monitoring Cap and Adaptor (Optional)

Morrison 305XXX YYYY ZZEVR

XXX represented by:

dash = Brass Adapter

XP = Cap with Cable Connector

XPA = Cap, Adapter and Cable Connector

YYYY represented by:

Numerical values between 0 to 9

	<u>Cap Size</u>	<u>Description</u>
2200	2"	3/8" hole & Cable Connector
2400	2"	1/2" hole & Cable Connector
0100	4"	3/8" hole
1100	4"	1/2" hole
0200	4"	3/8" hole & Cable Connector
1200	4"	1/2" hole & Cable Connector

	<u>Adapter Size</u>	<u>Description</u>
0000	2"	Adapter
0200	4"	Adapter

ZZ represented by:

AA = Adaptor

AC = Cap with/without Cable Connector

AK = Cap, Adapter with/without Cable Connector

Equipment**Manufacturer/Model Number****Drop Tube Diffuser
(Optional)**

(Figure 1M)

Morrison 539A XZ YYYY ADEV

*X represented by:**S = Slip-on**T = Threaded**Z represented by:**dash = blank**A = Anodized**YYYY represented by:**Numerical values between 0 to 9***Size**

0200 2"

0300 3"

**Double Tapped Bushing
(Optional)**

(Figure 1N)

Morrison 184X YYYY1B / 184X YYYYMB

*X represented by:**blank = iron / steel**S = Stainless Steel**YYYY represented by:**Numerical values between 0 to 9***Extractor Fitting
(Optional)**

(Figure 1O)

Morrison 56X 0101 MBE

*X represented by:**Numerical values between 0 to 9***Drop Tube Extender**

(Figure 1P)

Morrison 419E-XX00 AEEVR

*XX represented by:**Numerical values between 0 to 9***Tube Size**

02 2"

03 3"

04 4"

Wireless Tank Monitor

AMETEK ST95 LTE

TABLE 1-1
Components Exempt from Identification Requirements

Component Name	Manufacturer	Model Number
Drop Tube	Morrison	419 - - - YYXX 1TEVR 419A - - YYXX 1TEVR
305 Series Adaptors (dedicated gauging port & monitoring cap and adaptor)	Morrison	305 - - - 0000 AAEVR
Drop Tube Diffuser	Morrison	539A Series
Overfill Prevention Valve	Morrison	9095 Series
Product Coupler	Morrison	928 Series
Double Tapped Bushing	Morrison	184 Series
Extractor	Morrison	56X Series
Drop Tube Extender	Morrison	419E - XX00 AEEVR

**FIGURE 1A-1
Morrison Bros. 244 Series Emergency Vents**



Male Emergency Vents



Female Emergency Vents



Flanged Emergency Vents

**FIGURE 1A-2
Morrison Bros. 244 Series Emergency Vents
Cover Marking Diagram**

(The X designation will contain a value which may vary depending upon the size and pressure setting of the vent)



Vent Sample With Relief Opening Pressure
Less Than 0.5 Psi
(ONLY APPLIES TO 2" 8OZ/SQ. IN. MODELS)



Vent Sample With Relief Opening Pressure
Greater Than or Equal to 0.5 Psi

FIGURE 1B -1
Morrison Bros. 9095A Series Overfill Prevention Valve



Base Model
(w/o adaptor or bushing)



Direct Fill Model
(w/ adaptor)



Remote Fill Model
(w/ bushing)

FIGURE 1B-2
Morrison Bros. 9095C Series Overfill Prevention Valve



Base Model
(w/o adaptor or bushing)



Direct Fill Model
(w/ adaptor)



Remote Fill Model
(w/ bushing)

FIGURE 1B-3
Morrison Bros. 9095AA Series Overfill Prevention Valve



Base Model
(w/o adaptor or bushing)



Direct Fill Model
(w/ adaptor)



Remote Fill Model
(w/ bushing)

FIGURE 1B-3 (con't)
Morrison Bros. 9095 Series Overfill Prevention Valve



9095 AA Series Base Model
(w/o adaptor and w/ 2 floats)



9095 X Series Remote Fill Model
(w/ bushing and integral seat)

FIGURE 1C
Morrison Bros. 419 Series Drop Tube



FIGURE 1D
Morrison Bros. 516 Series Direct Fill Spill Container

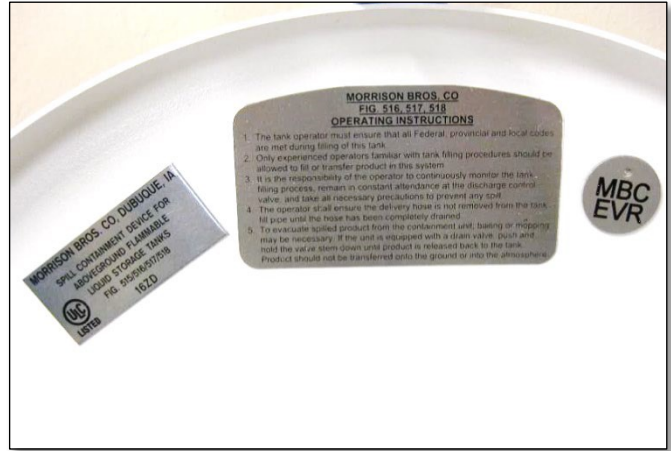


FIGURE 1E
Convault Drain Valve



FIGURE 1F
Drain Plug (Typical)



FIGURE 1G
Morrison Bros. 927 Series Non-Rotatable Product Adaptor



FIGURE 1H
Morrison Bros. 735DC Series Product Dust Cap



Note: The number 713 at the bottom of the cap refers to the aluminum the cap is made of, and not the model number of the cap itself.

FIGURE 1I
Morrison Bros. 927 Series Non-Rotatable Product Adaptor



FIGURE 1J
Morrison Bros. 323 Series Non-Rotatable Vapor Adaptor

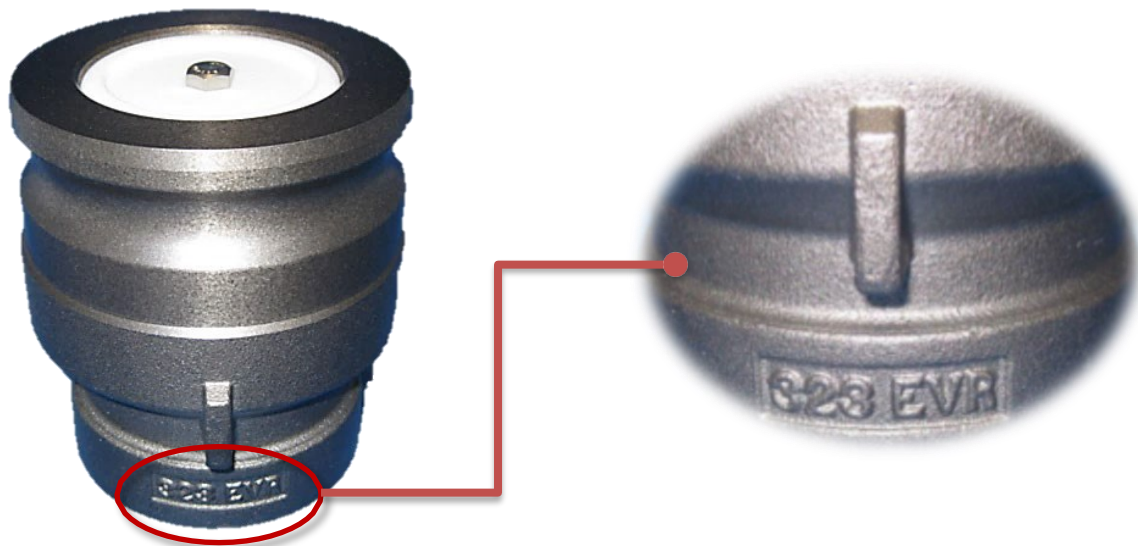


FIGURE 1K
Morrison Bros. 323C 0100 ACEVR Vapor Adaptor Dust Cap

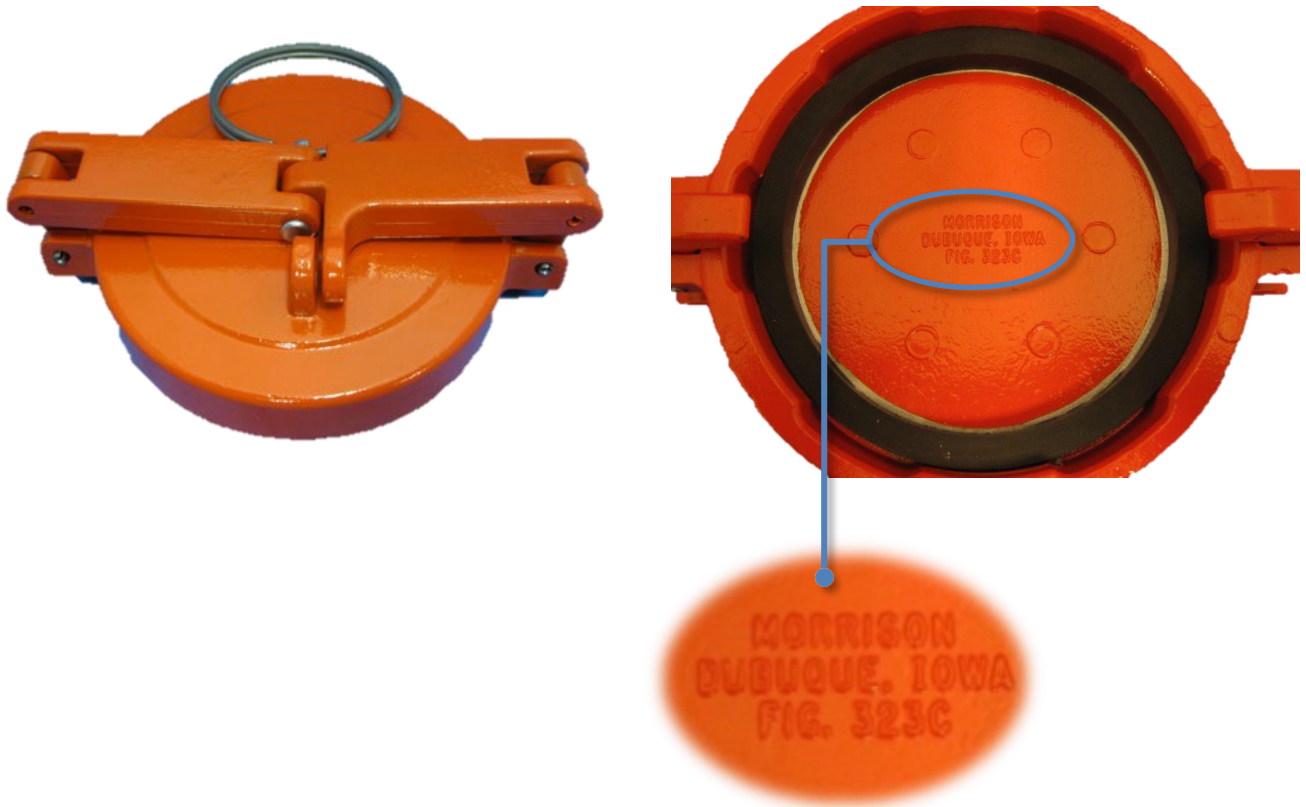


FIGURE 1L
Dedicated Gauging Port

NOTE: Per CP-206, an Above Ground Storage Tank (AST) shall include a dedicated gauging port for determining the amount of gasoline. The determination shall be accomplished manually, mechanically, or electronically

FIGURE 1L-1
Morrison Bros. 305 Series Gauge Port Adaptor and Cap
(optional)



Morrison Bros. 305 Series Gauge Port Adaptor



Morrison Bros. 305 Series Gauge Port Cap

FIGURE 1L
Dedicated Gauging Port
(continue)

FIGURE 1L-2
Morrison Bros. Mechanical Tank Gauge
(optional)



Morrison Bros. 818 Series
(optional)



Morrison Bros. 918 Series
With Alarm Output
(optional)



Morrison Bros. 918DP Series
With Dual Alarm Output
(optional)

FIGURE 1L
Dedicated Gauging Port
(continue)

FIGURE 1L-3
Morrison Bros. 305 Series Monitoring Cap & Adaptor
(optional)



FIGURE 1M
Morrison Bros. 539 Series Drop Tube Diffuser
(optional)



FIGURE 1N
Morrison Bros. 184 Series Double Tapped Bushing
(optional)



FIGURE 1O
Morrison Bros. Extractor 56X Series
(optional)

(Photo is of Fig. 562 4" x 4" x 3" x 2")



FIGURE 1P
Morrison Bros. 419E Drop Tube Extender



FIGURE 1Q
SKYBITZ AMETEK ST95 LTE Wireless Tank Monitor

