

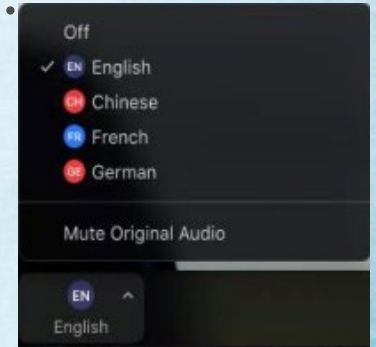


California Smog Check Contingency Measure Concept Public Workshop

August 24, 2023

Zoom Language Selection

- Click “Interpretation” found at the bottom of the screen
- Click the language you would like to hear: English or Spanish.
- To only hear interpreted language (Spanish), click “Mute Original Audio”



Zoom Webinar Details

- Call-in Number: (888) 363-4734
Conference Code: 350021
- Questions will be taken at the end of the presentation
 - In Zoom: Use "Raise Hand" feature, or type in "Q&A" box
 - On phone:
 - #2 to "Raise Hand"
 - *6 to Unmute/Mute

Agenda

1. Overview of Contingency Measures
2. CARB Opportunities for Contingency Measures
3. Smog Check Program Overview
4. Smog Check Contingency Concept
5. Next Steps
6. Q + A

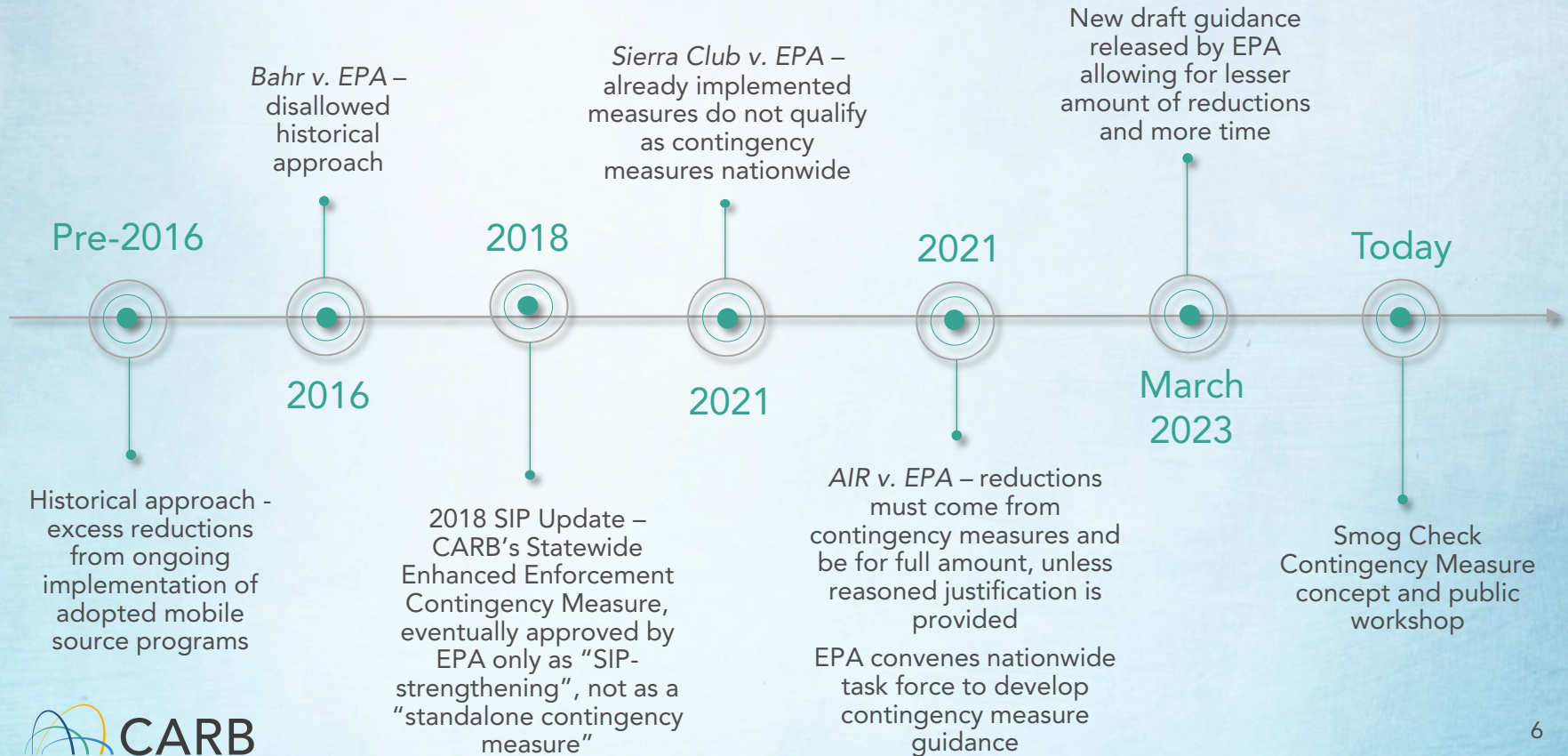
Contingency Measures

SIP Measures that can take effect upon failing to attain or meet an RFP milestone

- Required under Clean Air Act section Section 172(c)(9)
- Already adopted and can take effect without further action by the state
- Implemented within 60 days
- Reduces emissions within 1-2 years of being triggered
- Historically required reductions to represent about one year's worth of reasonable further progress



History



SIP Areas That Need Contingency Measures

Ozone

PM2.5

| Area | Ozone | | | PM2.5 | | |
|--------------------------|-----------|-----------|-----------|-------------------------|-------------------------|-------------------------|
| | 70 ppb | 75 ppb | 80 ppb | 12 µg/m ³ | 15 µg/m ³ | 35 µg/m ³ |
| Coachella Valley | ✓ | ✓ | | | | |
| Eastern Kern County | ✓ | ✓ | | | | |
| Mariposa County | ✓ | | | | | |
| Plumas County | | | | ✓ | | |
| Sacramento Metro Area | ✓ | ✓ | | | | |
| San Diego County | ✓ | ✓ | | | | |
| San Joaquin Valley | ✓ | ✓ | ✓ | ✓ | ✓ | ✓ |
| South Coast Air Basin | ✓ | ✓ | | ✓ | | |
| Ventura County | ✓ | | | | | |
| Western Mojave Desert | ✓ | ✓ | | | | |
| Western Nevada | ✓ | | | | | |

CARB Contingency Measures

- Evaluate CARB regulations for contingency measures opportunities
 - Light, medium, and heavy-duty vehicles and trucks, airport shuttles, and buses
 - Off-road equipment, forklifts, lawn and garden, construction and mining, industrial equipment, commercial harbor craft, recreational boats, and ocean-going vessels
 - Port and rail operations, locomotives, space and water heaters
- Ensure reductions are beyond what is needed for meeting air quality standards

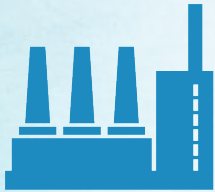
Challenges Limiting Opportunities



California's aggressive mobile source control programs driving to zero-emissions limit opportunities



Primarily federally regulated sources are more than half of statewide mobile source NOx emissions



California must implement measures to support expeditious attainment rather than hold them in reserve

Contingency Options and Limitations

Options

- Require more stringent standards
- Pull forward compliance deadlines
- Increase percentage sales/purchase requirements
- Enhanced testing/enforcement requirements

Limitations

- Must go through regulatory process that takes up to five years
- Many regulations are technology forcing and generally the most stringent in the country
- Industry/fleets need lead time to develop, manufacture, and deploy new technologies
- Going to zero is needed for attainment and eliminates opportunities for contingency

California Smog Check Program

- Vehicle inspection and maintenance program reduces air pollution by identifying vehicles with emission control component failures in need of repair
- Visual inspection and emission control test
- Administered by Bureau of Automotive Repair (BAR) in conjunction with Department of Motor Vehicles (DMV)



Smog Check Program Requirements

- Smog check inspections required every two years*
- Vehicles subject to Smog Check
 - 1976 and newer gasoline-powered vehicles
 - 1998 and newer diesel-powered vehicles 14,000 or less GVW
- Motorcycles and electric vehicles are exempt
- 8 model-year-old and newer vehicles are exempt, but must pay annual smog abatement fee, a portion of which goes to Air Pollution Control Fund for Carl Moyer Program
 - Annual funding from all exempted vehicles to Carl Moyer ~ \$110 million

Smog Check Fees

- 7-8 model year old exempted vehicles must pay a Smog Abatement Fee of \$25
 - \$21 goes to Air Pollution Control Fund for Carl Moyer Program
 - \$4 to BAR for program administration
- Smog Check Inspection costs
 - Smog Check Certification fee \$8.25
 - Smog inspection - \$55 on average
 - Average vehicle repairs - \$750



Smog Check Contingency Concept

Smog Check inspection exemptions would change if triggered in the applicable nonattainment area

First trigger

8 model years old (MYO) and newer to 7 MYO and newer

< 8 MYO  < 7 MYO

Second trigger

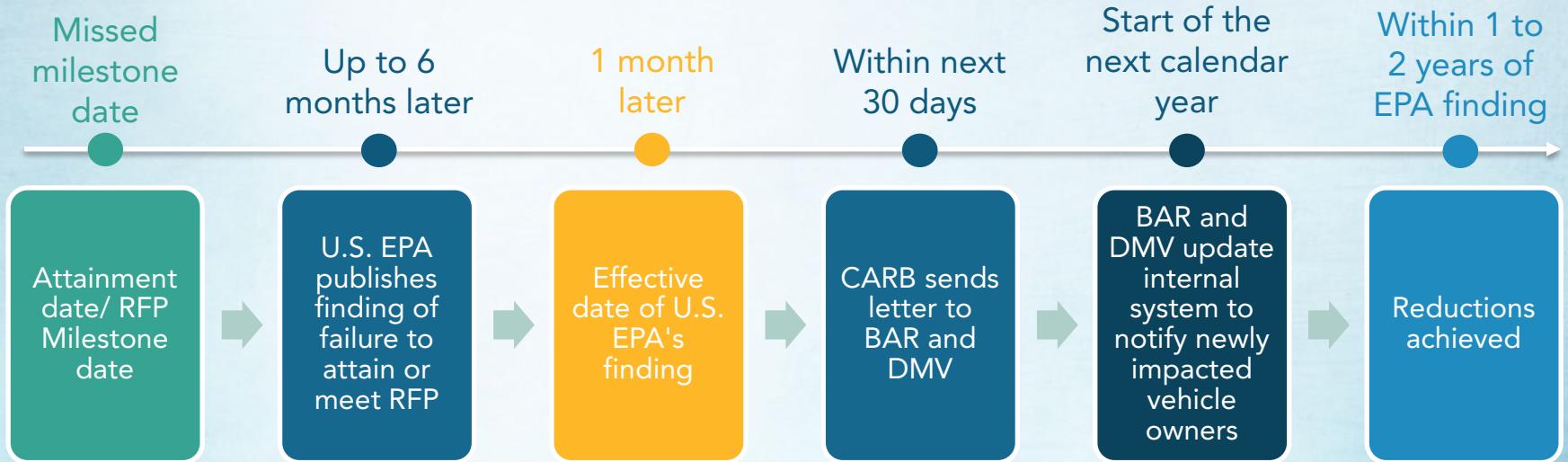
7 MYO and newer to 6 MYO and newer

< 7 MYO  < 6 MYO

Implementation

- CARB would transmit a letter to BAR and DMV that the measure is needed for the SIP in the relevant nonattainment area with 30 days of an EPA finding
- CARB would work with BAR and DMV to administer the exemption change in the impacted nonattainment area
- Smog check inspection exemption change would occur at the beginning of the calendar year

Implementation Timeline





Emissions Benefits

- Additional smog checks will identify new emissions control equipment failures and ensure they are corrected
- Reduces emissions that result when emissions control equipment that age over time are repaired
- CARB staff is working to quantify the emission reduction benefits that will be included in the staff report

Equity and Environmental Justice

- Certain communities are disproportionately burdened by harmful air pollution
- CARB is committed to ensuring a healthy environment for all Californians
- Staff conducted an analysis to evaluate whether there would be a disproportionate impact on Disadvantaged Communities (DAC) if this measure is triggered



Equity Analysis

Preliminary analysis shows no disproportionate impact in terms of population impacted

Percent of
vehicle owners
impacted by the
change and
located in DACs

≈

Percent of
vehicle
owners in
DACs
overall

Potential Impacts to Vehicle Owners

Measure may place additional cost burden on vehicle owners not previously subject to smog check



Smog Check inspection cost (certification and test fees) – Relatively equivalent to two years of Smog Abatement Fee



Repair costs – while costs can be significant, financial assistance is available, including through the BAR Consumer Assistance program (up to \$1,200)

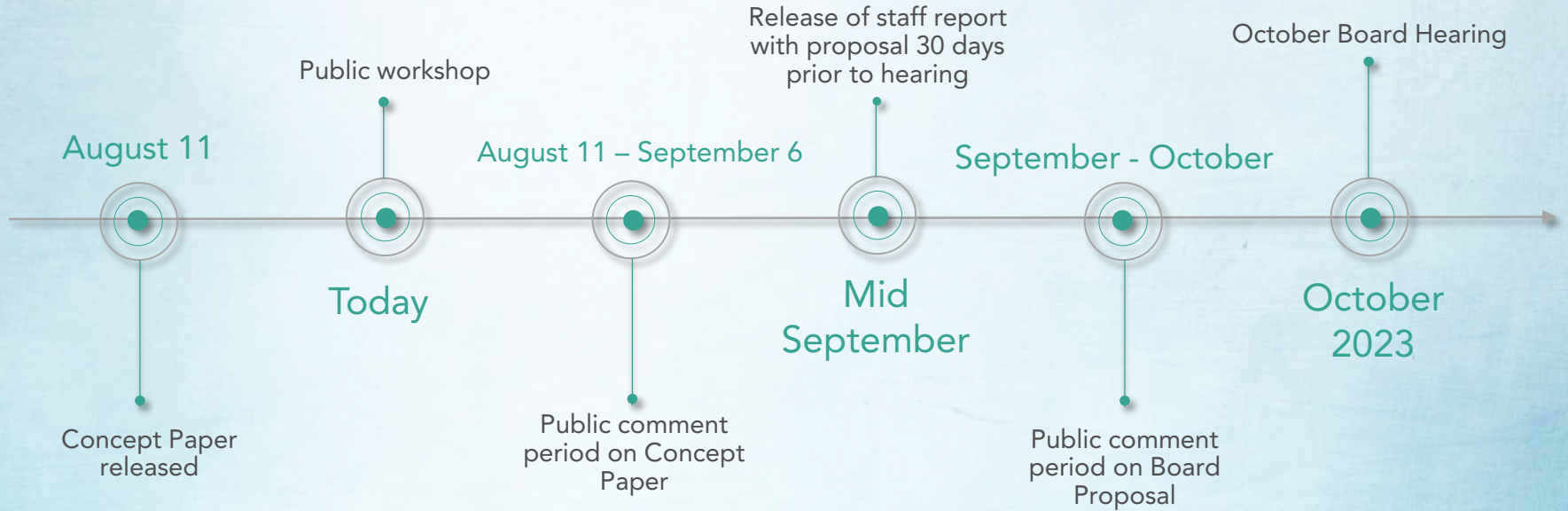


Additional time spent to obtain smog check - May be able to acquire smog check during routine maintenance

Carl Moyer Program Impacts

- Loss in Carl Moyer Funding from a decrease in Smog Abatement fees collected if Measure is triggered
- Carl Moyer Program provides grant funding for cleaner-than-required engines, equipment, and other sources of air pollution
- Staff is working to estimate loss of potential funding/emissions reductions

Next Steps



Q + A

By Zoom

Use "Raise Hand" feature, or
type in "Q&A" box

By Phone

#2 to "Raise Hand"
*6 to Unmute/Mute

Please email additional questions & comments to

SIPplanning@arb.ca.gov