

# OUTDOOR RESIDENTIAL WASTE BURNING ATCM



February 21, 2002  
Sacramento, California

California Environmental Protection Agency

---



**Air Resources Board**

# Introduction

---



- **Backyard garbage burning produces:**
  - ◆ dioxins
  - ◆ other toxics
  - ◆ fine particulate matter
- **Dioxins and other toxics cause cancer**
- **Children are especially vulnerable to dioxins**

# Proposed Regulation

---



- ◆ Reduces individual and neighborhood exposure to dioxins
- ◆ Eliminates burning in all populated areas
- ◆ Revised based on comments

# What is Backyard Burning?

---



- Outdoor burning at one-and two-family homes



- Materials include anything other than vegetation

# What are Health Effects?

---

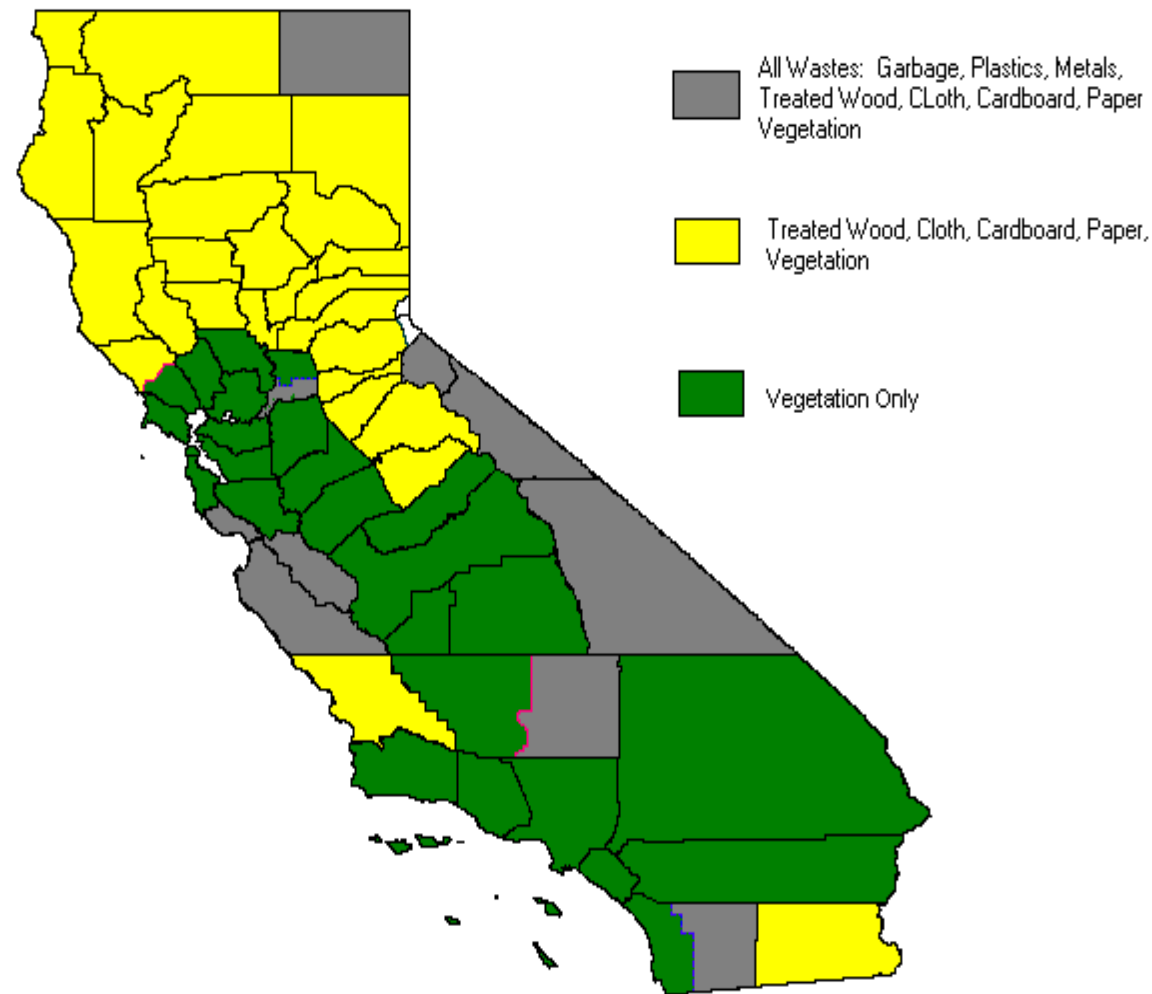
- **Toxic Air Contaminants:**
  - ◆ cancer
  - ◆ neurological damage
  - ◆ respiratory, skin, eye irritation
  - ◆ compromised immune system
- **Fine Particulate Matter:**
  - ◆ respiratory problems
  - ◆ cardiac problems

# What are Public Health Impacts?

---

- **Children are especially vulnerable**
- **Individual and neighborhood exposure**
- **Increased potential cancer risk**

# Materials Allowed to be Burned per Air District Rules



# Regulatory Development Process

---



- Residential Burning Working Group
- Agency consultations
- 21 public workshops



# Original Provisions of Regulatory Proposal

---

- Eliminate backyard garbage burning
- Eliminate burn barrels
- Burn only on permissive burn days
- Use only approved ignition device
- Limited exemptions, revisited every 5 years
- Effective July 2003

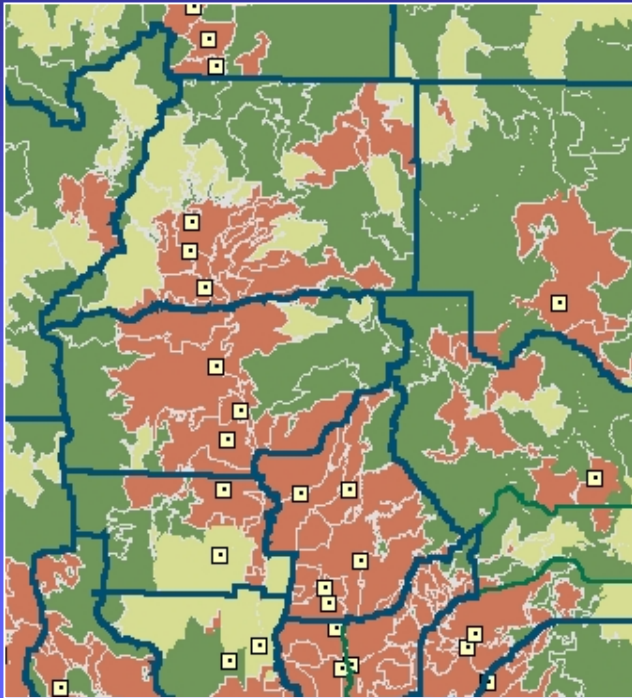
# Proposed Staff Modifications

---

- **Allow only burning of paper and cardboard in exemption areas**
- **Extend effective date to January 2004**
- **Include public education by ARB**
- **Include specific exemption criteria based on population density**
- **Exemptions revisited every 10 years**

# Structure of the Modified Exemption Criteria

---



- **Automatic exemption**
  - ◆ < 3 people per square mile
- **Discretionary exemption**
  - ◆ 3 - 10 people per square mile
- **Prohibited**
  - ◆ > 10 people per square mile
  - ◆ Incorporated city or town

# Other Environmental Impacts

---

- Landfill capacity and diversion
- Illegal dumping
- Indoor burning
- Vehicle emissions
- Fire safety

# Economic Impacts

---

- **Enforcement**
- **Public education and outreach**
- **Waste disposal fees and service**

# Other Issues

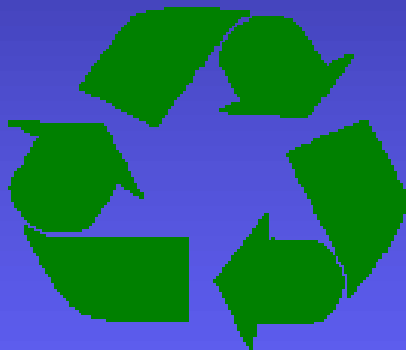
---

- Higher population density cut-off
- More monitoring and testing
- Later effective date

# Recommendations

---

Regulation



Education

Coordination

- Approve ATCM with staff revisions
- Support public education and outreach
- Continue working with Integrated Waste Management Board