



**Date:** 12 March 2009

**Service Bulletin:** TT503

**Subject:** ARB Equipment Registration (ARB ER) Model and Engine Information

**SharePoint Info Central:** This bulletin is available on SharePoint Info Central\ Bulletins\Service Bulletins

### Summary

The purpose of this bulletin is to assist anyone required to fill out the ARB, TRU form find the required model and engine information.

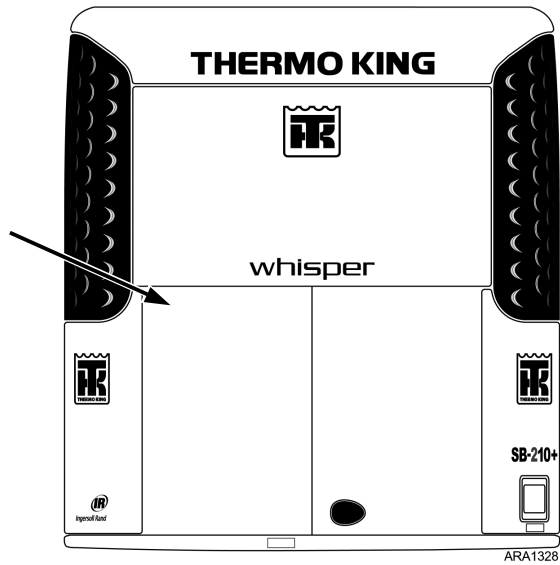
**NOTE: CARB allows a TRU to have an engine that was manufactured up to one year before the TRU was manufactured. See advisory 08-01.**

[https://ww2.arb.ca.gov/sites/default/files/2022-09/advisory\\_08\\_01.pdf](https://ww2.arb.ca.gov/sites/default/files/2022-09/advisory_08_01.pdf)

### STEP 1: Identify the Unit

Locate the TRU/TRU Generator Set Unit Serial Number Plate.

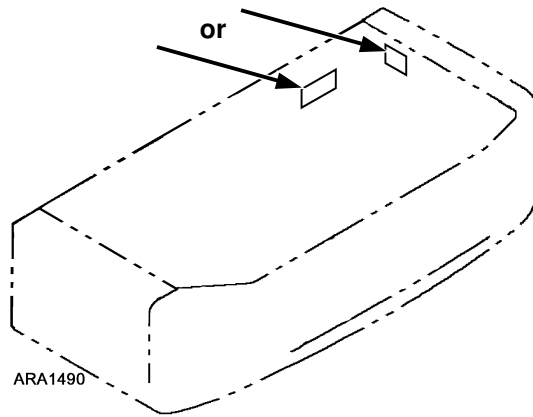




SB Units – Inside Door

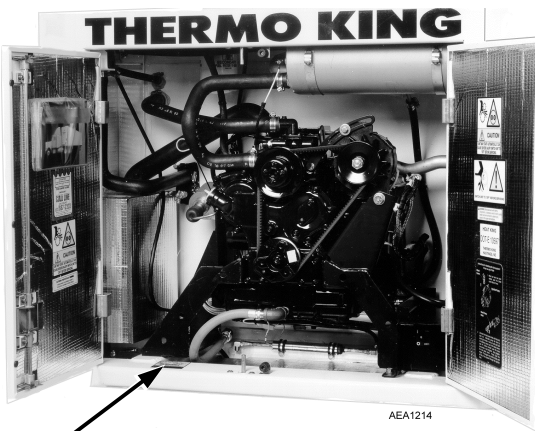


Super II Units – Inside Door



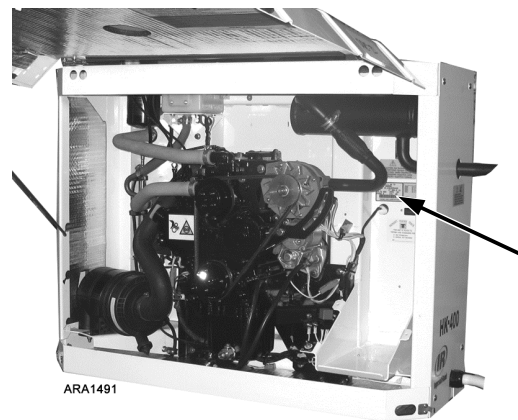
ARA1490

Truck Units



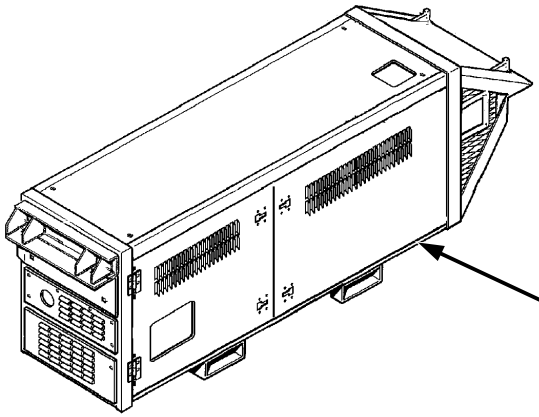
AEA1214

HK Units

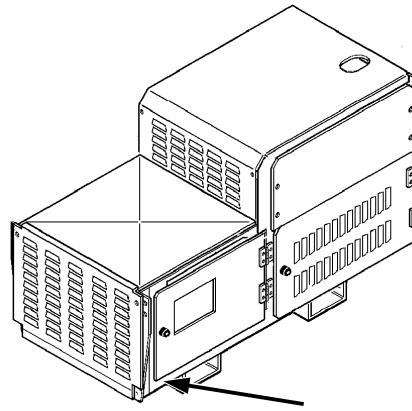


ARA1491

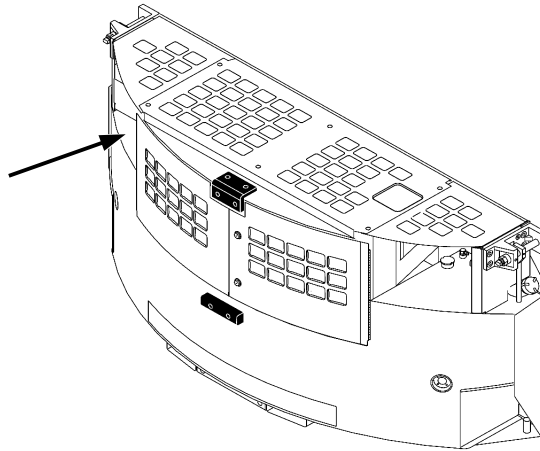
HK-400 Units



**SGSM Generator Set Units**



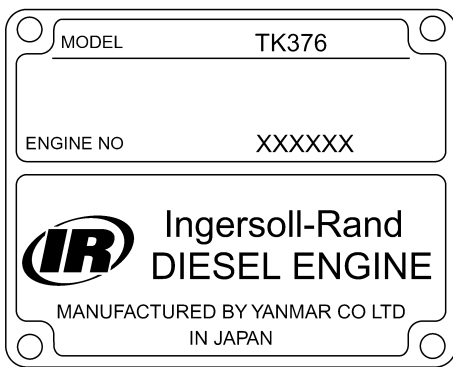
**SGCM Generator Set Units**



**SGCO Generator Set Units**

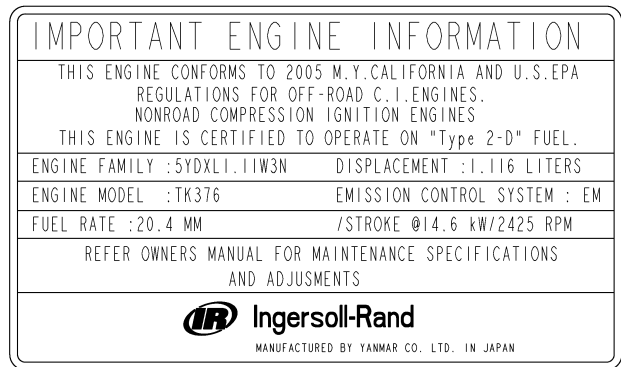
**STEP 2: Identify the Engine**

Locate the Engine Serial Number Nameplate and the Engine Emissions Label.



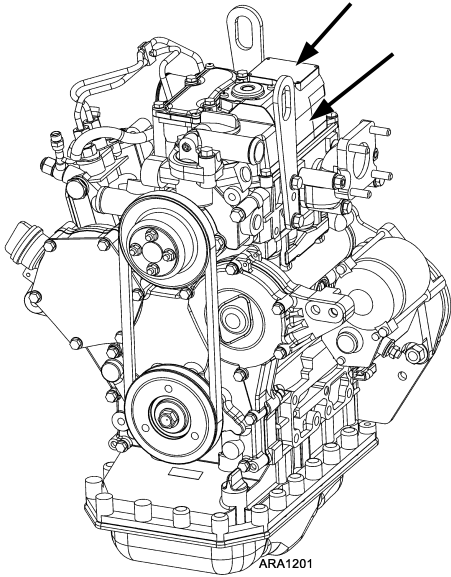
ARA1127

**Typical Engine Serial Number Nameplate**

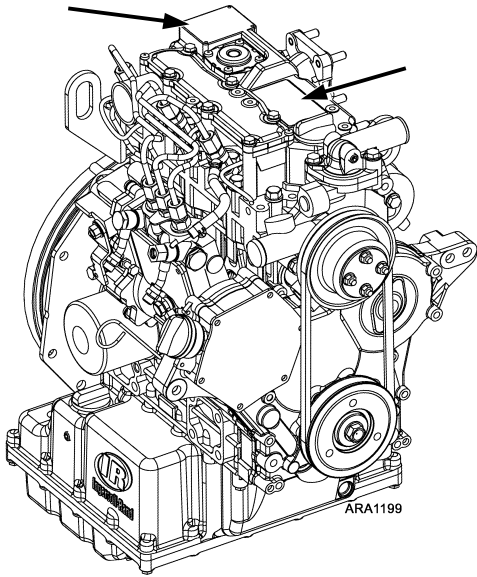


ARA1492

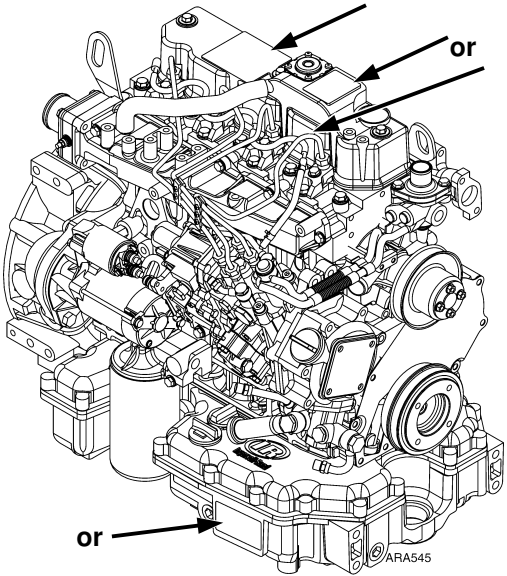
**Typical Engine Emissions Label**



**Typical 2-Cylinder Engine**



**Typical 3-Cylinder Engine**



**Typical 4-Cylinder Engine**

**STEP 3: Fill Out the Form**

**TRANSPORT REFRIGERATION UNIT ATCM MODEL-ENGINE-COMPLIANCE INFORMATION FORM**

<https://ww2.arb.ca.gov/resources/documents/ttdftb-030-tru-atcm-model-engine-compliance-information-form>

Enter the TRU/TRU Generator Set information from Old Style Serial Number Plate. (See next page for New Style Serial Number Plate.)

**TRU/TRU Generator Set Unit Information**

**\*indicates required field**

Provide TRU/TRU Generator Set unit information here. Do not provide engine information on this page. The engine must be entered on the compliance information page (page 3 of this form).

TRU/TRU Generator Set Unit Type\*

TRU

TRU Generator Set

TRU/TRU Generator Set Unit Manufacturer\*

Thermo King

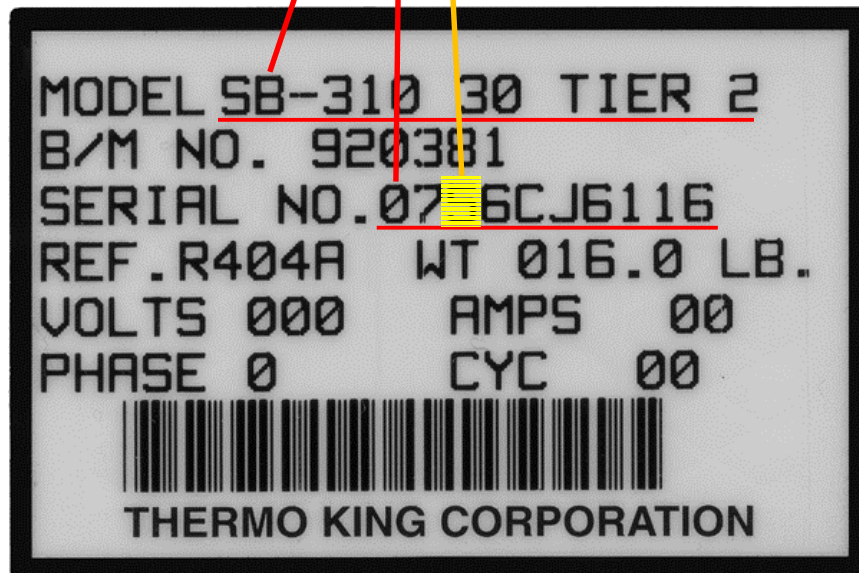
TRU/TRU Generator Set Unit Model\*

TRU/TRU Generator Set Unit Model Year\*

TRU/TRU Generator Set Unit Serial Number\*

TRU/TRU Generator Set Unit ID

Third Digit in Serial Number is Model Year



Old Style Serial Number Plate

Enter the TRU/TRU Generator Set information from New Style Serial Number Plate.

**TRU/TRU Generator Set Unit Information**

**\*indicates required field**

Provide TRU/TRU Generator Set unit information here. Do not provide engine information on this page. The engine must be entered on the compliance information page (page 3 of this form).

TRU/TRU Generator Set Unit Type\*

TRU

TRU Generator Set

TRU/TRU Generator Set Unit Manufacturer\*

Thermo King

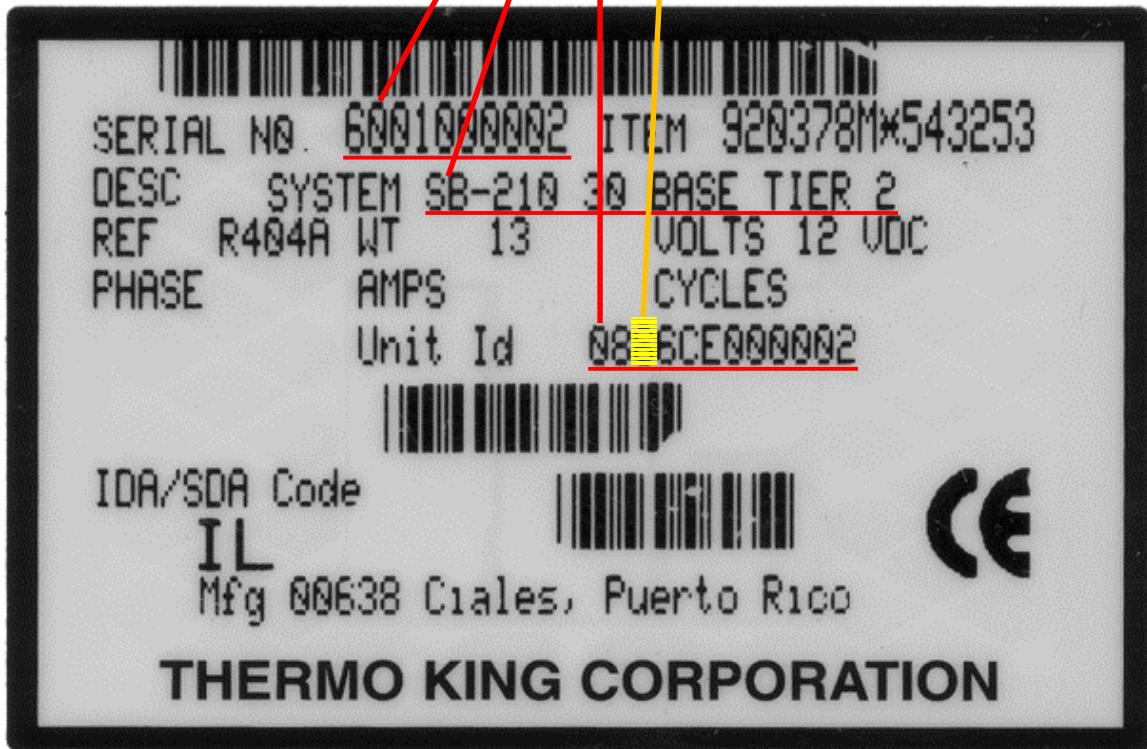
TRU/TRU Generator Set Unit Model\*

TRU/TRU Generator Set Unit Model Year\*

TRU/TRU Generator Set Unit Serial Number\*

TRU/TRU Generator Set Unit ID

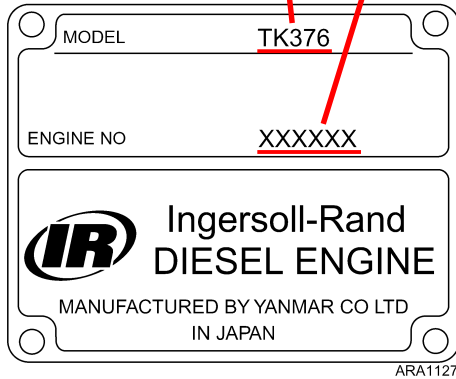
Third Digit in Unit ID is Model Year



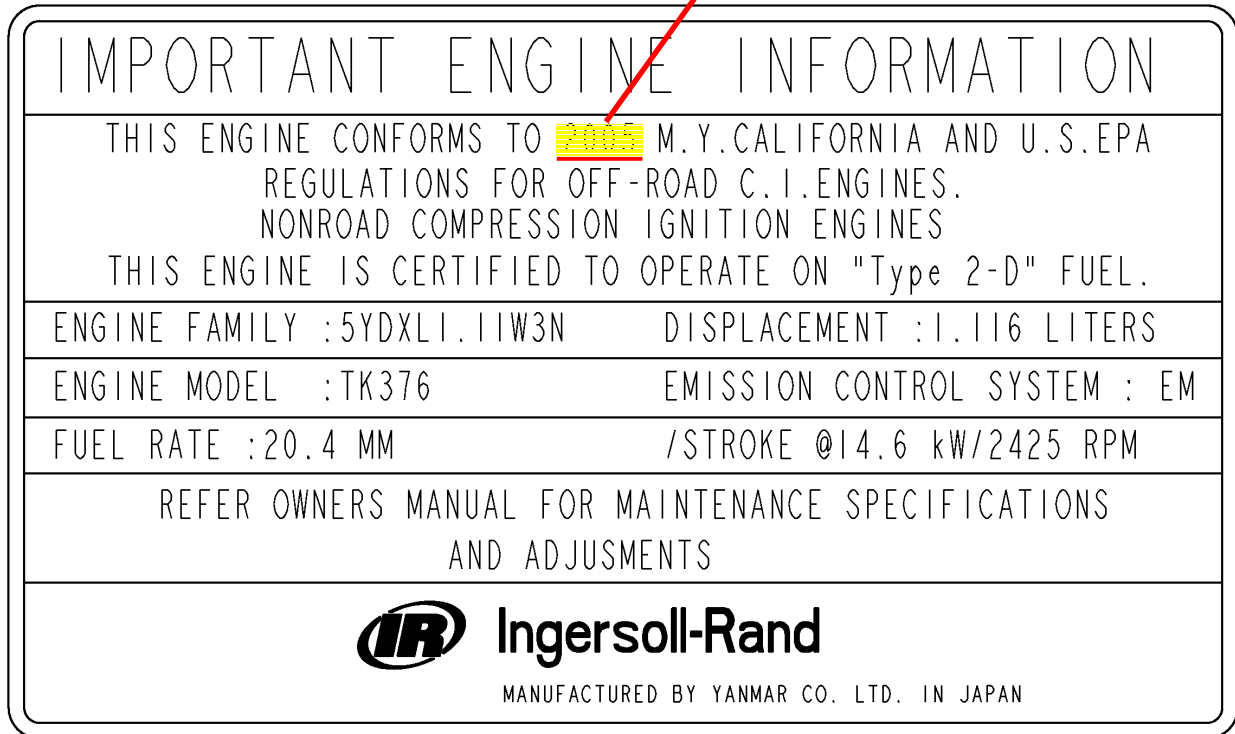
New Style Serial Number Plate

Enter the engine information.

		4-Cylinder Engines	2 and 3-Cylinder Engines
<b>TRU Engine Information (all fields required)</b>			
TRU Engine Manufacturer	<input type="text" value="Yanmar"/>	Power Rating	<input type="checkbox"/> <25HP (<19kW) <input type="checkbox"/> ≥25HP (≥19kW)
TRU Engine Model	<input type="text"/>	TRU Engine Model Year	<input type="text"/>
TRU Engine Serial Number			



Typical Engine Serial Number Nameplate



Typical Engine Emissions Label

**NOTE: CARB allows a TRU to have an engine that was manufactured up to one year before the TRU was manufactured. See advisory 08-01.**

[https://ww2.arb.ca.gov/sites/default/files/2022-09/advisory\\_08\\_01.pdf](https://ww2.arb.ca.gov/sites/default/files/2022-09/advisory_08_01.pdf)