



# Air Resources Board Enforcement Division

Kern Bluff Field 20220601

Lead Inspector Signature (Leng Mut)	Date
-------------------------------------	------

**Inspection Dates: June 1-2, 2022**

## **Purpose of Inspection**

On May 17, 2022, San Joaquin Valley Air Pollution Control District (SJVAPCD) responded to a complaint in the Morningstar community, in Bakersfield, that the oil wells in Kern Bluff field near residents were leaking methane at high levels. On May 19, 2022, California Air Resources Board (CARB) enforcement staff received two emails from community groups, informing CARB of a well leak complaint to SJVAPCD. In response to these emails, CARB staff inspected the wells in the Kern Bluff field identified in the emails on May 20-21 and June 1-2, 2022.

In May and June 2022, CARB, CalGEM, and SJVAPCD staff inspected wells in the field operated by three operators - Sunray Petroleum, Zynergy, and Citadel. Inspection measurements of the wells show that 33-55% of idle and active wells in the Kern Bluff field that CARB inspected emit methane over 50,000 parts per million (ppm). Based on information from Well Finder, the distances from Sunray Petroleum, Zynergy, and Citadel to a person's residence are 370 feet, 900 feet, and 900 feet, respectively. Due to the proximity to the community, CARB used a mobile monitoring platform equipped with a highly accurate ( $\pm 1\%$ ) methane analyzer to check for methane in the surrounding residential areas near the Kern Bluff field on June 1-2, 2022.

## **CARB Staff Present at Inspection**

- Leng Mut, Air Resources Engineer
- Regina McDoniels, Air Pollution Specialist
- Ron Oineza, Air Resources Engineer

## **Oilfield Information**

Oil/Gas Field Name: Kern Bluff  
City/State: Bakersfield, CA 93306  
County: Kern

CalEnviroScreen Score: 49% (CalEnviroScreen 4.0)

## Description of Inspection

At 8:30 am on June 1, 2022, CARB staff drove around the residential areas near the oil wells in Kern Bluff field. Inspectors focused on detecting methane in the neighborhoods close to Sunray, Zynergy, and Citadel sites, including the Juliet Thorner Elementary School. Using a mobile monitoring platform equipped with a highly accurate ( $\pm 1\%$ ) methane analyzer to measure for methane, staff did not detect methane above background levels at any of these locations.

At 6:30 pm on June 2, 2022, CARB staff re-screened for methane around the Juliet Thorner Elementary School using a mobile monitoring platform equipped with a highly accurate ( $\pm 1\%$ ) methane analyzer. Inspectors did not detect methane above background levels.

Figure 1, on the next page, shows the mobile methane analyzer-scanned areas in red, and well sites in blue (map source: Well Finder).

Figure 1

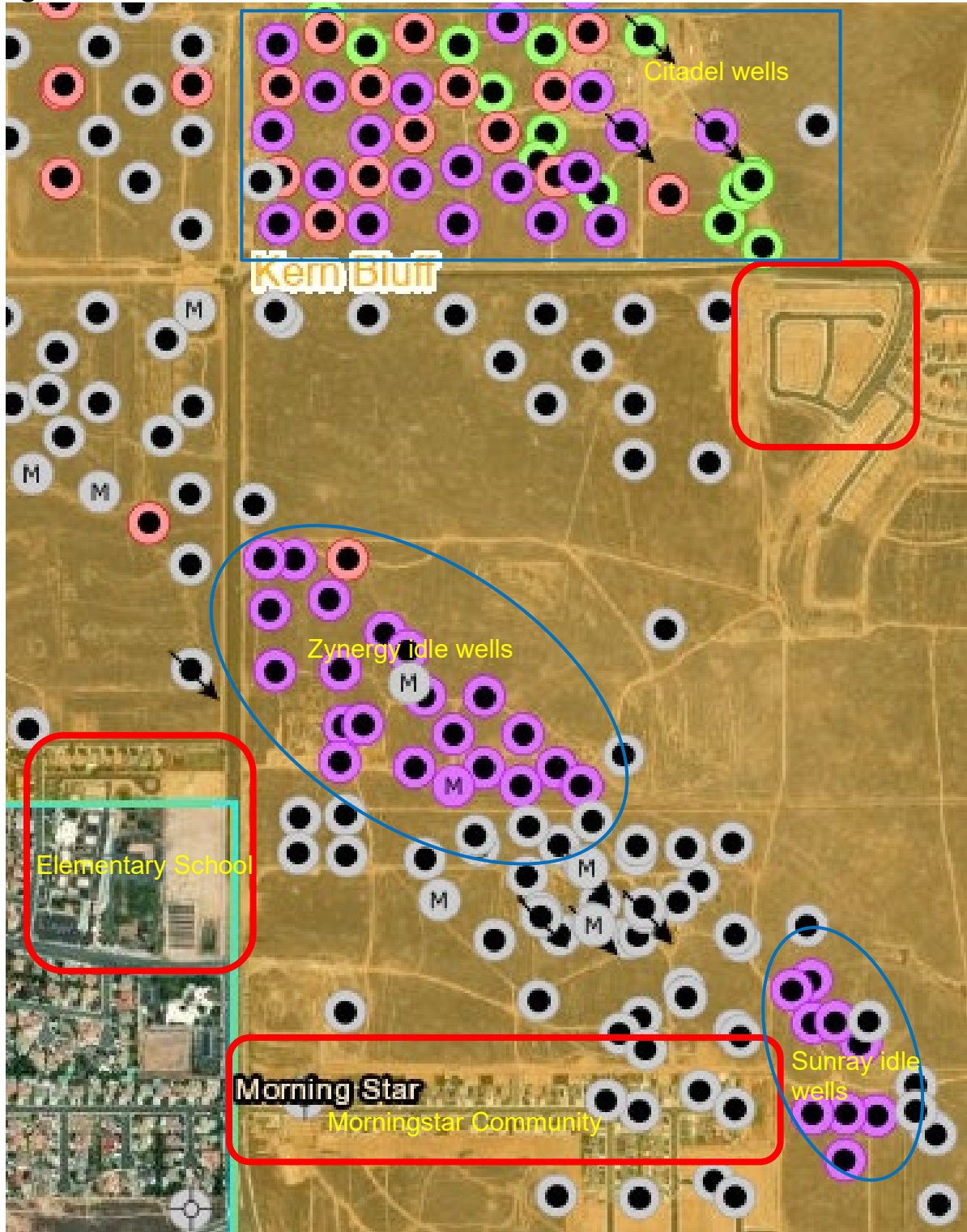
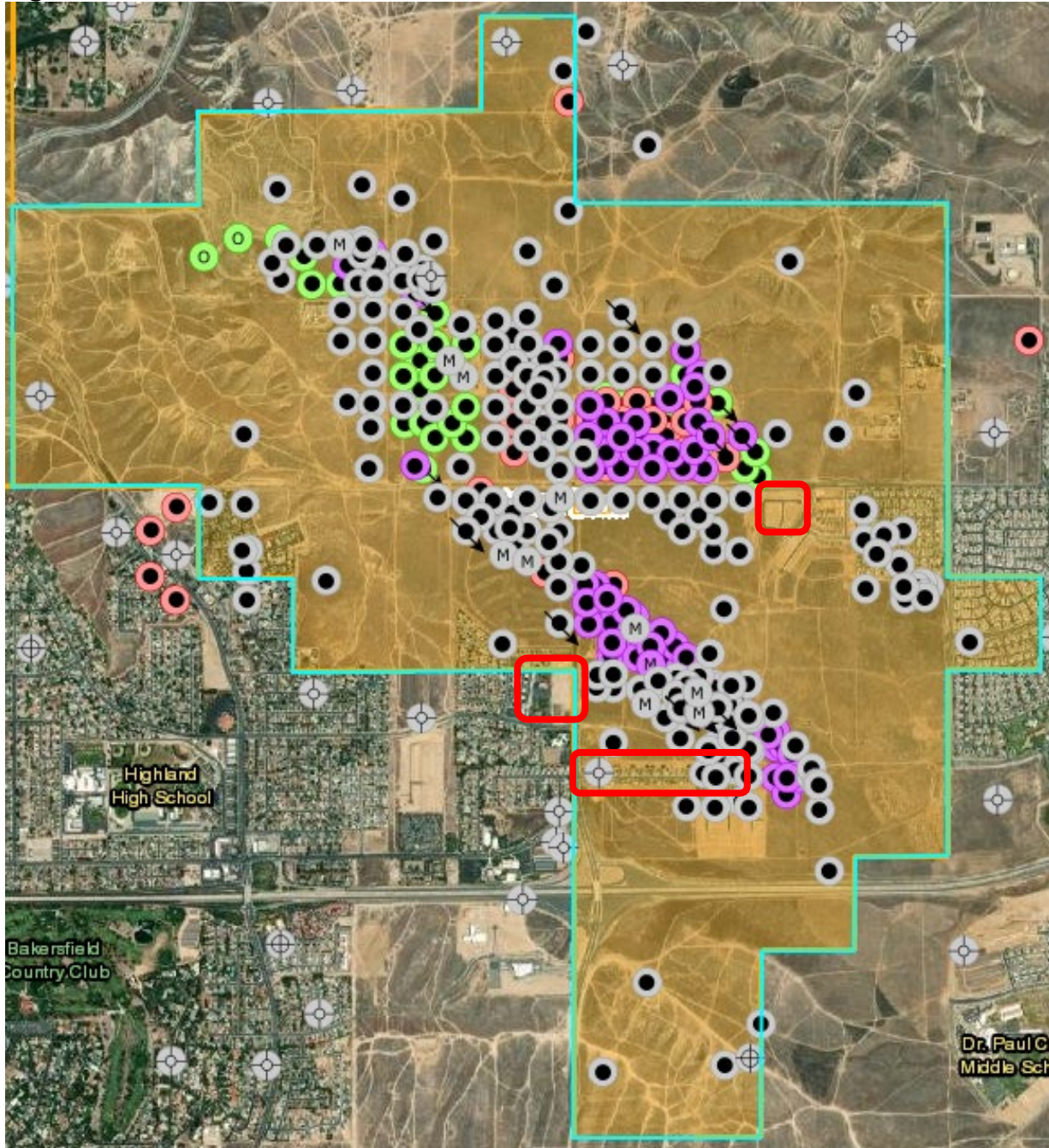


Figure 2, below, shows the parameter of the Kern Bluff field in light green lines. The red rectangular and square shapes are areas scanned in the field (map source: Well Finder).

Figure 2



### Works Cited

"CalEnviroScreen 4.0." *California Office of Environmental Health Hazard Assessment*, 20 Oct. 2021, <https://oehha.ca.gov/calenviroscreen/report/calenviroscreen-40>.

"Well Finder" *CalGEM*, n.d., <https://maps.conservation.ca.gov/doggr/wellfinder/#openModal/-118.90878/35.40751/16>. Accessed 27 Jun. 2022.