

Supplemental Figures for 2021 Forestry Equipment Emissions Inventory

The following figures illustrate the actual data used to derive age distribution as well as annual activity distribution for the three equipment categories described in the inventory technical report. More details are provided in Section 3.1 of CARB’s 2021 Forestry Equipment Emissions Inventory¹.

1. Extraction Equipment Group

Figure 1: Extraction Equipment Group Age Distribution

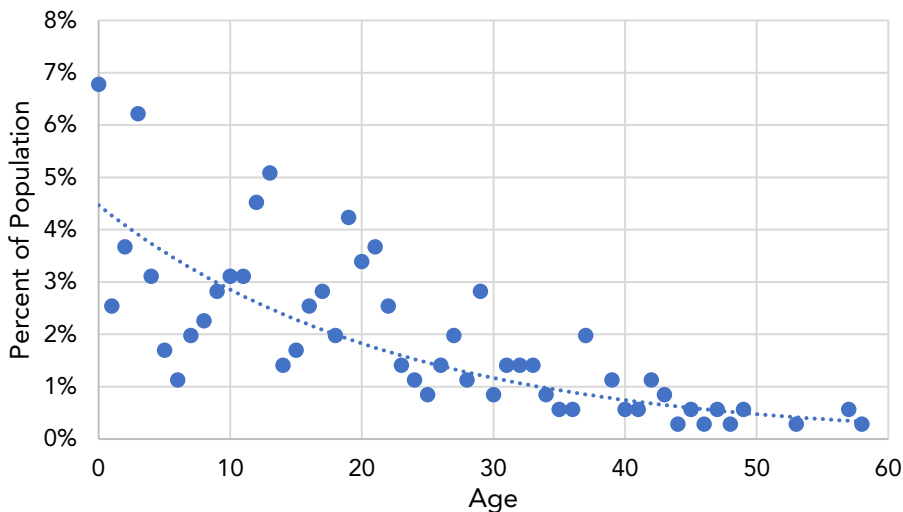
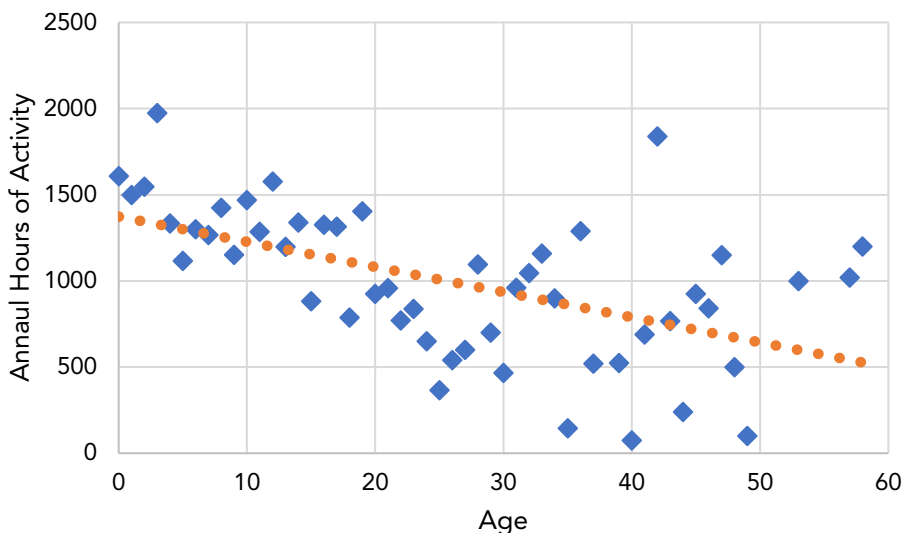


Figure 2: Extraction Equipment Group Activity Distribution



¹ https://ww2.arb.ca.gov/sites/default/files/2021-08/2021_Forestry_Inventory_Technical_Document_DRAFT_08182021.pdf

2. Manufacturing Equipment Group

Figure 3: Manufacturing Equipment Group Age Distribution

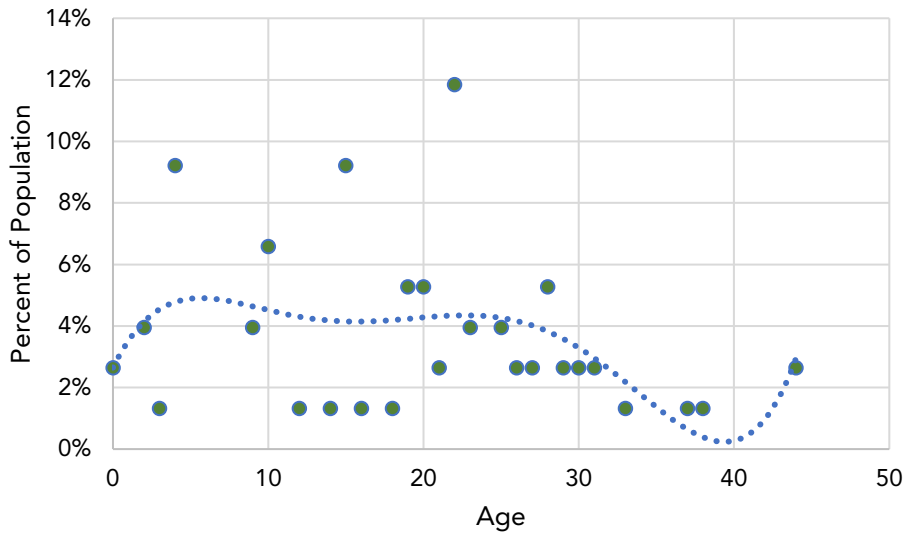
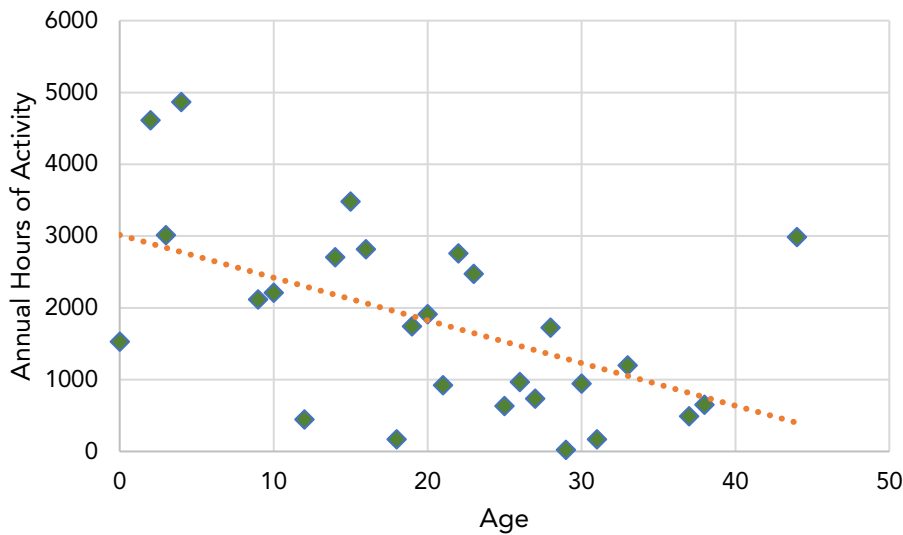


Figure 4: Manufacturing Equipment Group Activity Distribution



3. Road Maintenance & Construction Equipment Group

Figure 5: Road Maintenance & Construction Equipment Group Age Distribution

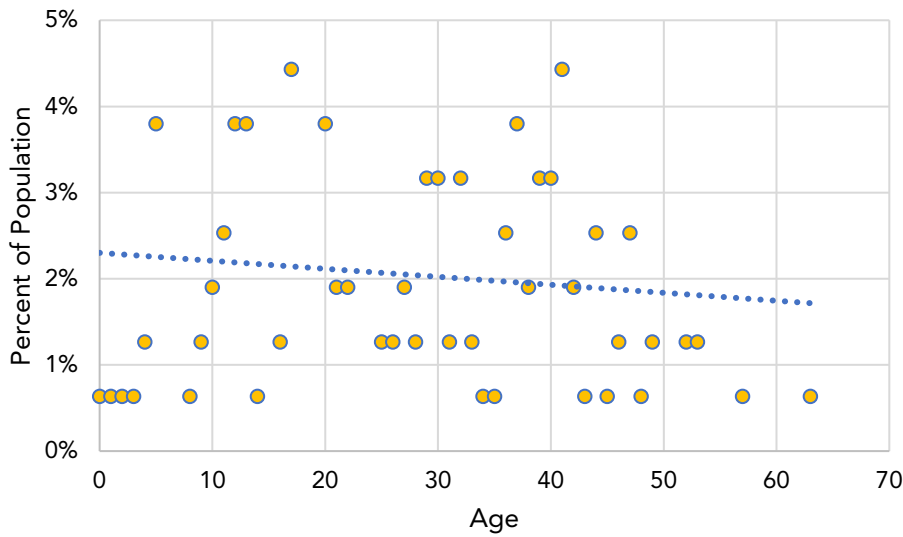


Figure 6: Road Maintenance & Construction Equipment Group Activity Distribution

