

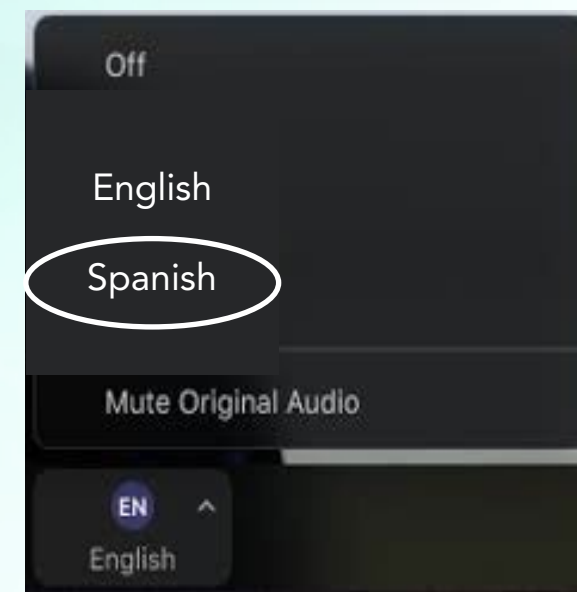
# Language Interpretation through Zoom

- Spanish Interpretation is being provided
- **Note:** The Interpretation feature requires downloading the Zoom application to your desktop.
- All attendees are asked to find and click on the Interpretation Icon.
  - English: select Off
  - Spanish: select Spanish, then Mute Original Audio



# Interpretación de Idiomas en Zoom

- Tendremos servicio de interpretación.
- **Advertencia:** Para usar la función de interpretación de idioma, los participantes tienen que descargar la aplicación de Zoom en su desktop (escritorio).
- A todos los participantes se les pide que busquen y opriman el ícono de interpretación (Interpretation)
  - Para inglés, tiene que hacer clic en inglés (English) y luego hacer clic en Silenciar Audio Original (Mute Original Audio).
  - Para español, tiene que hacer clic en español (Spanish) y luego hacer clic en Silenciar Audio Original (Mute Original Audio).





**Public Meeting:  
Funding Year 2022-2023 Research Concept and  
Comment Collection**

June 16, 2021



# CARB Priorities

Air Quality Standards



Environmental Justice



Climate Change



Mobile Sources



Sustainable Communities



# How CARB works with federal and local air quality agencies

## FEDERAL



### US EPA

Sets & enforces national air quality standards.  
Regulates interstate transportation.



TRAINS



PLANES



SHIPS

## STATE



Regulates mobile sources of air pollution,  
greenhouse gases & consumer products.



CARS



TRUCKS



BUSES

## LOCAL



### Local Air Districts

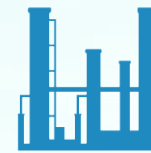
Regulates stationary & local  
sources of air pollution.



FIREPLACES



FACTORIES



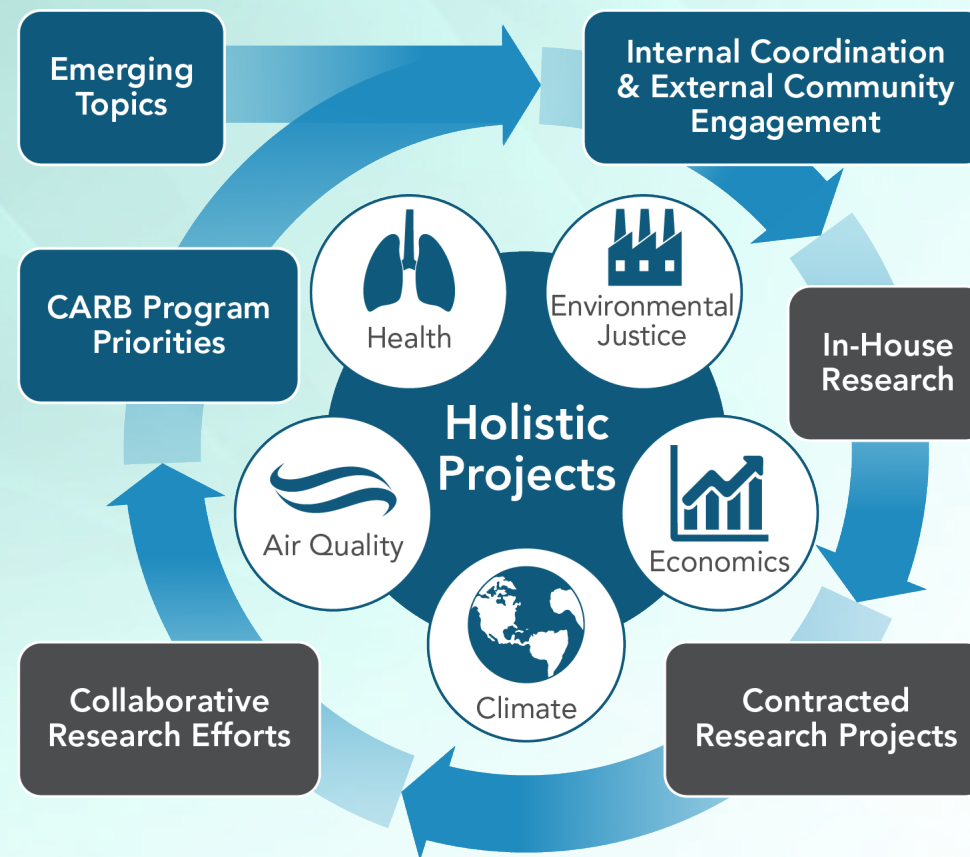
REFINERIES



POWER PLANTS

# CARB Research Program

- Legislatively mandated research program
- Sound science to support CARB goals
- Research topics and projects
- Research on information gaps, unknowns, additional opportunities in regulatory and incentive programs





# Strategic Guidance: Priorities

- Triennial Strategic Research Plan
  - Developed with public input
  - Provides roadmap
  - Aids in research planning and outreach
  - Guides annual project selection
    - FY21-22: 11 Proposed Projects
    - FY22-23: To be developed
    - FY23-24: To be developed
  - Delineates new priorities



# Triennial Research Initiatives



- Exposure Impacts and Mitigation
- Indoor Pollution Sources, Exposure, and Mitigation
- Sustainable Communities and Health
- **New Initiative: Expanding Health Analysis**

- Cumulative Impacts
- Short-term Health Exposure
- Identifying Emission Sources
- **New Initiative: Reducing Disparities**



# Research Initiatives



- Market Transformation
- Program Assessment
- New Initiative: Behavioral Economics

## State Implementation Plans

- Ozone Sensitivity and Transport
- Identifying Sources of PM<sub>2.5</sub>
- New Initiative: Emissions Reduction Strategies

## Mobile Sources

- Light-Duty Fleet Deterioration & High Emitters
- Real-World & Laboratory Emission Discrepancies
- Potential of Advanced Technology
- Heavy-Duty Real-World & Certification Emission Discrepancies
- Reductions from Off-road
- Increased Freight Efficiency
- Potential of Advanced heavy-Duty Technology
- New Initiative: Non-tailpipe Emission Sources

# Research Initiatives



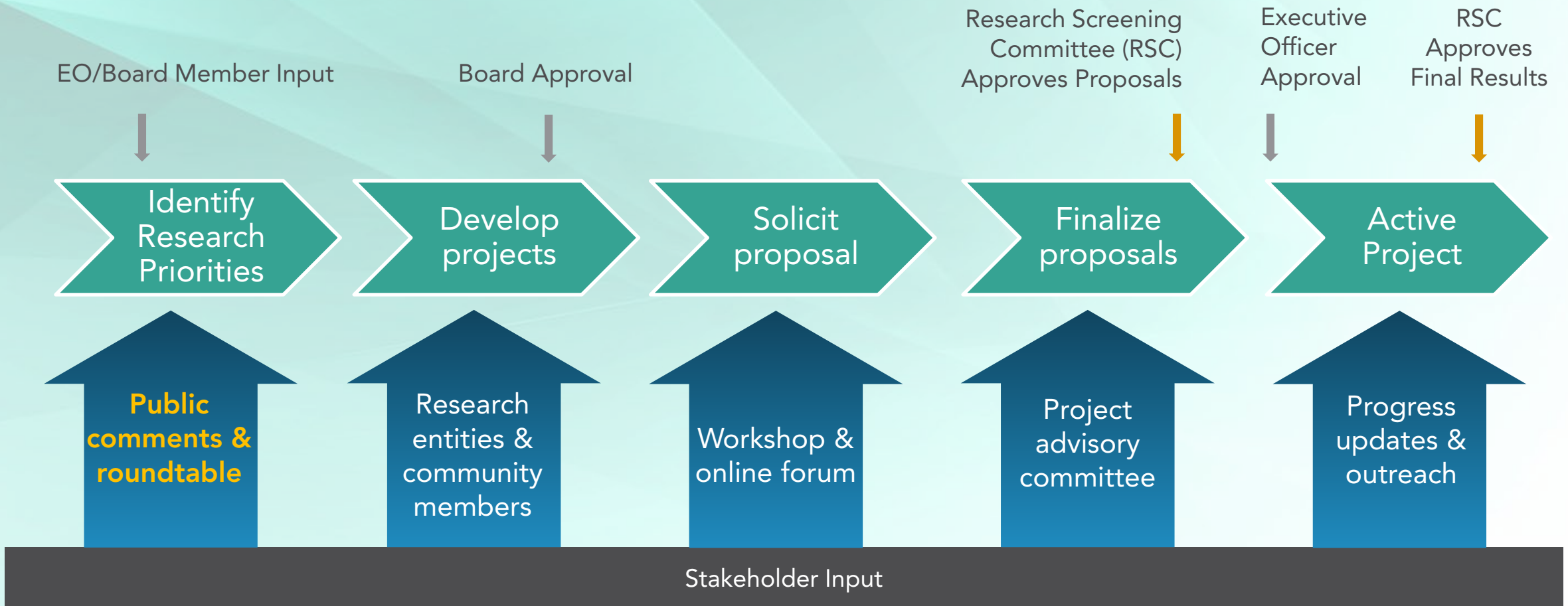
## GHG Pollutants & Mitigation

- Evaluating Trends & Refining Emissions Estimates
- New Initiative: Mitigation Options

## Sustainable Transportation and Communities

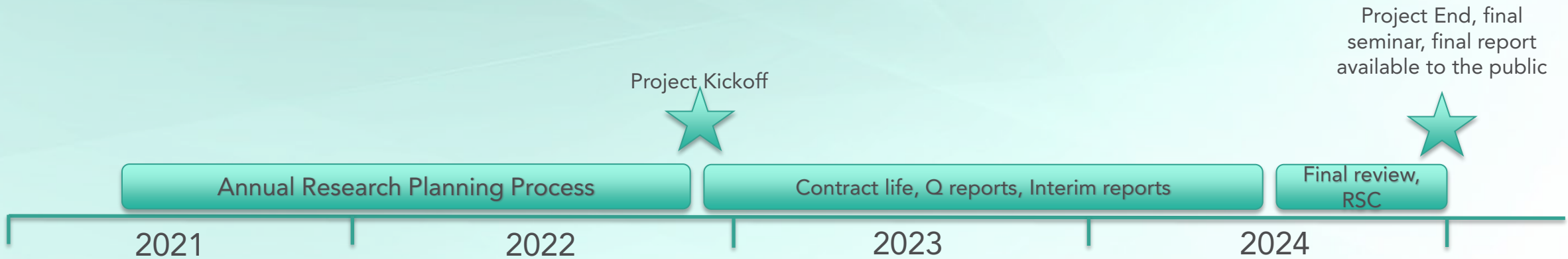
- Tracking Progress & Co-benefits
- Evaluating and Mitigating GHG Emissions from VMT, Land Use & Buildings

# Annual Research Planning Process



# Next Steps

- Fiscal year 2022-23 project will
  - Begin in late 2022
  - Provide interim results throughout the project
  - Produce a final report and public seminar in 2025





# Collecting Public Input

- 2 Options
  - Research concept or priority
    - Select relevant research area from list
    - Contact information
    - 300-word concept or priority
  - Research comment
    - Select air district
    - Contact information
    - Brief description of concern that can be addressed by research
- Link: [Homepage | California Air Resources Board](#)
  - Search for “Research” or “Research Planning”

# Open Discussion

- We will now take questions, comments and would encourage an open discussion
  - Process
  - Health and EJ
  - Air Quality and Economics
  - Climate and Sustainable Transportation and Communities
- Please state your name, affiliation, or community first
- Research Activities listserv:  
<https://public.govdelivery.com/accounts/CARB/subscriber/new>  
(Pick the "Research Activities" option)