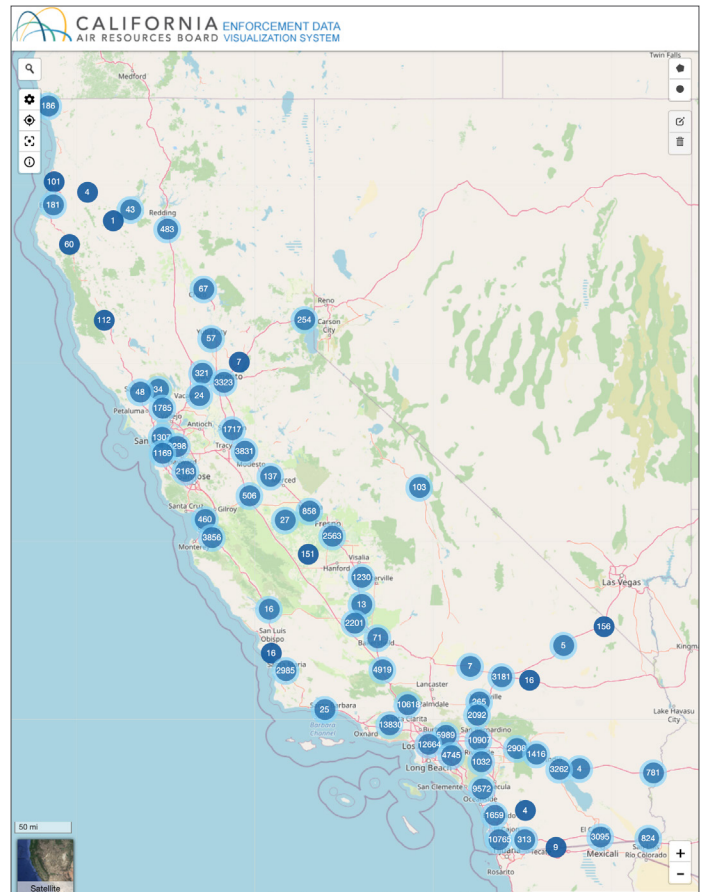


Enforcement Data Visualization System

The California Air Resources Board (CARB) developed the Enforcement Data Visualization System (EDVS) to help Californians better understand CARB's enforcement at the state, regional, and community levels. We developed this tool to enhance transparency, provide community members a user-friendly way to access CARB enforcement activities, and facilitate the development of emissions reduction programs in California communities. The tool can help develop community emissions reduction plans by identifying local compliance rates and locating gaps in inspections.

The EDVS tool shows CARB's enforcement activities across the state on an interactive map. These activities include field inspections and case settlements for heavy-duty diesel vehicles and equipment used on roads and in railyards, ports, and construction, as well as fuels, engines, consumer products, and marine vessels.



Review enforcement activities on EDVS
webmaps.arb.ca.gov/edvs

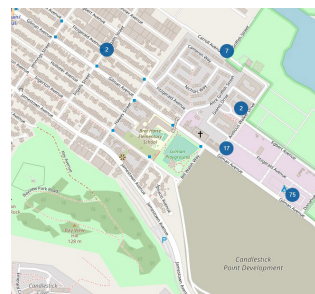
Supplemental Environmental Projects (SEPs) in communities throughout California can also be found on EDVS under the settlements option.

To learn more about SEPs and how to apply for funding, please visit: bit.ly/CARB-SEPs.

112 Dark blue circles show inspections conducted by CARB enforcement staff at that location.

103 Lighter blue circles with halos around them represent combined inspections at this zoomed out map view. Zoom in to further split up the inspections.

🔍 94124



Users can search the EDVS map by an address, city, or zip code using the magnifying glass search function.

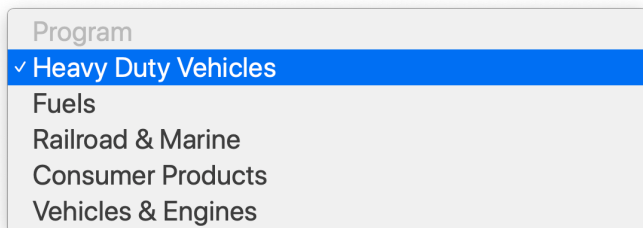
Search Options

Click on the Options button to bring up the panel for the main menu where you can select different criteria for your searches.

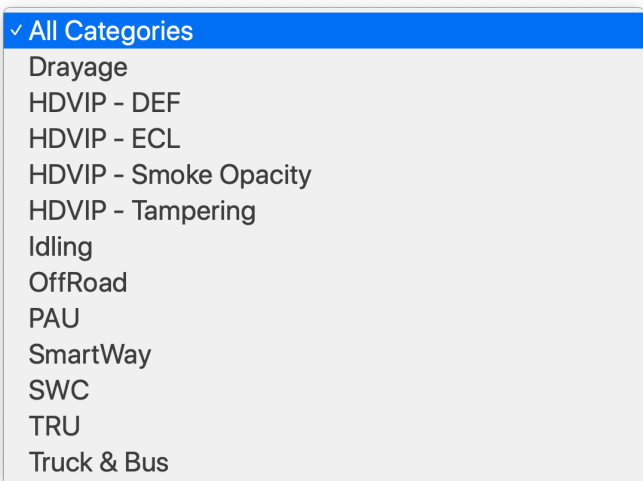


These criteria range from:

- **Region** - statewide, EJ communities, AB617 communities, air districts, or custom areas
- **Map type** - inspection versus settlements
- **Program** - programs for regulations CARB enforces:



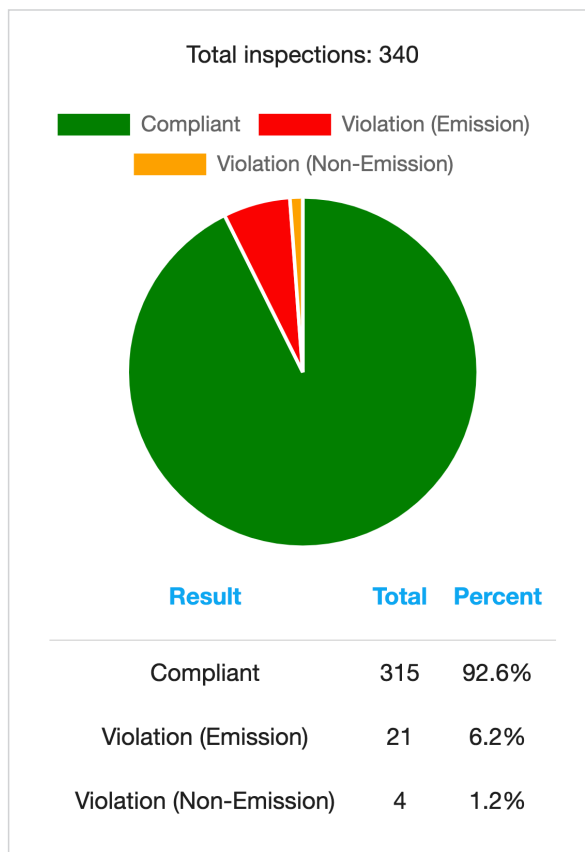
- **Year** - by year beginning 2015
- **Category** - more specific categories within enforcement programs, like the example categories under the heavy-duty vehicles program:



You can create custom searches by picking specific options from each drop-down menu.

Inspections, Violations and Compliance Rates

Clicking on a blue circle shows a pie chart with compliance rates and a breakdown of the number of compliant inspections and the number of noncompliant inspections (i.e. violations). There are two types of violations, emissions and nonemissions. Non-emissions violations don't necessarily cause emissions, but do violate CARB's rules, such as not listing a vehicle's compliance status through rule reporting requirements.



Contact us at COES@arb.ca.gov for more information about the EDVS tool and CARB's enforcement in your community, or find us online at bit.ly/CARB-COES. May 2021