



# Railyard Emissions Listening Session

March 4, 2021  
5:00-7:00 PM

# Listening to Language Interpretation

1. In your meeting/webinar controls, click **Interpretation**. It can be located at the bottom of the screen.
2. Click the language that you would like to hear. For this meeting, you will have English and Spanish as your options.
3. To only hear the interpreted language, click **Mute Original Audio**.

Windows | macOS

1. In your meeting/webinar controls, click **Interpretation**.



2. Click the language that you would like to hear.



3. (Optional) To hear the interpreted language only, click **Mute Original Audio**.

# Listening to Language Interpretation

If you have questions during the meeting, please use the chat feature and type in your question. CARB staff will translate the question for the presenters to respond. If you are not able to use the chat box, let the interpreter know of your question by raising your hand and CARB staff will interpret and type it into the chat box for you.

# Listening to Language Interpretation

Please call into our Spanish Conference Line if you are unable to access the simultaneous translation.

Spanish Conference Call  
Number:

**(866) 803-2146**

Passcode:

**1083550**

# Before We Get Started

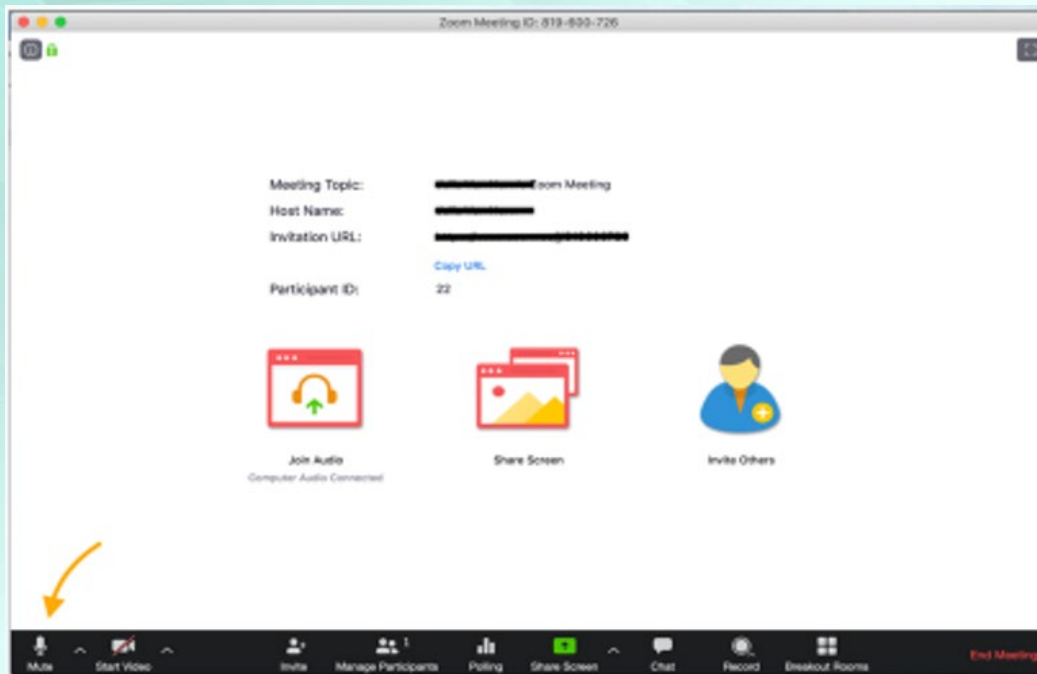
- Please **mute yourself** and make sure your name is showing as your screen name
- To **rename**, click on the top right side of your picture/video
- Use this naming convention, **First Last- Affiliation** (e.g. Jane Doe- CARB)
  - **Community Organization / Agency / Air District / etc**
  - **P-** for General Public
  - **I-** Interpreter
- **Need help?** Use the Chat function to request assistance

# Zoom Orientation

## Mute/Unmute

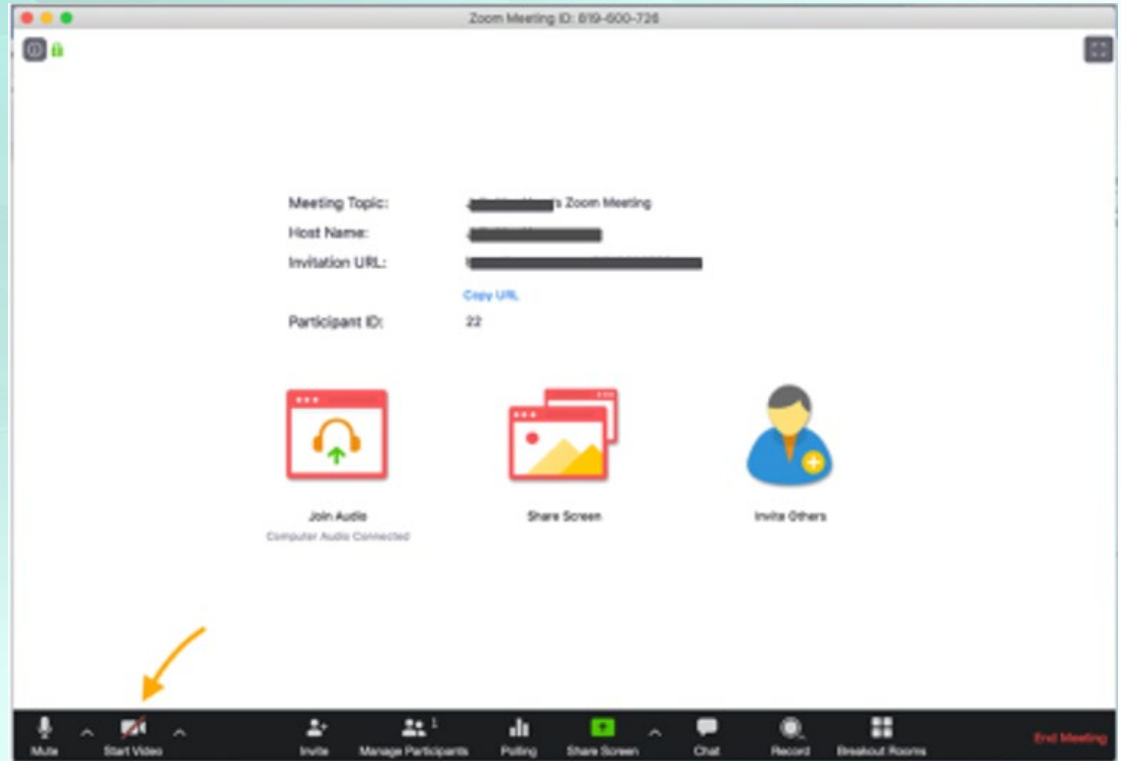
Please remain on mute unless your name has come up in the speaking que

- Zoom:  
**Mute/Unmute** button at bottom left
- On phone: Dial \*6 to mute/unmute



# Video

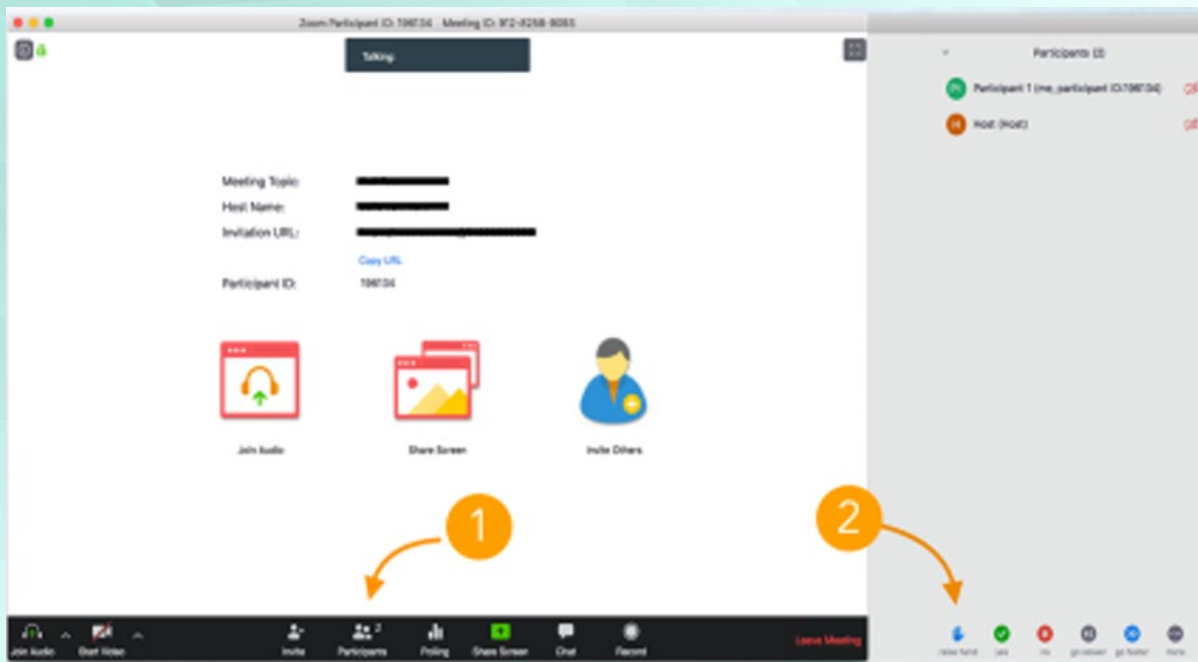
Click the camera icon at the bottom left of your screen to toggle your video on and off.



# Raise Hand

To be added to the speaking queue, please use **Raise Hand**

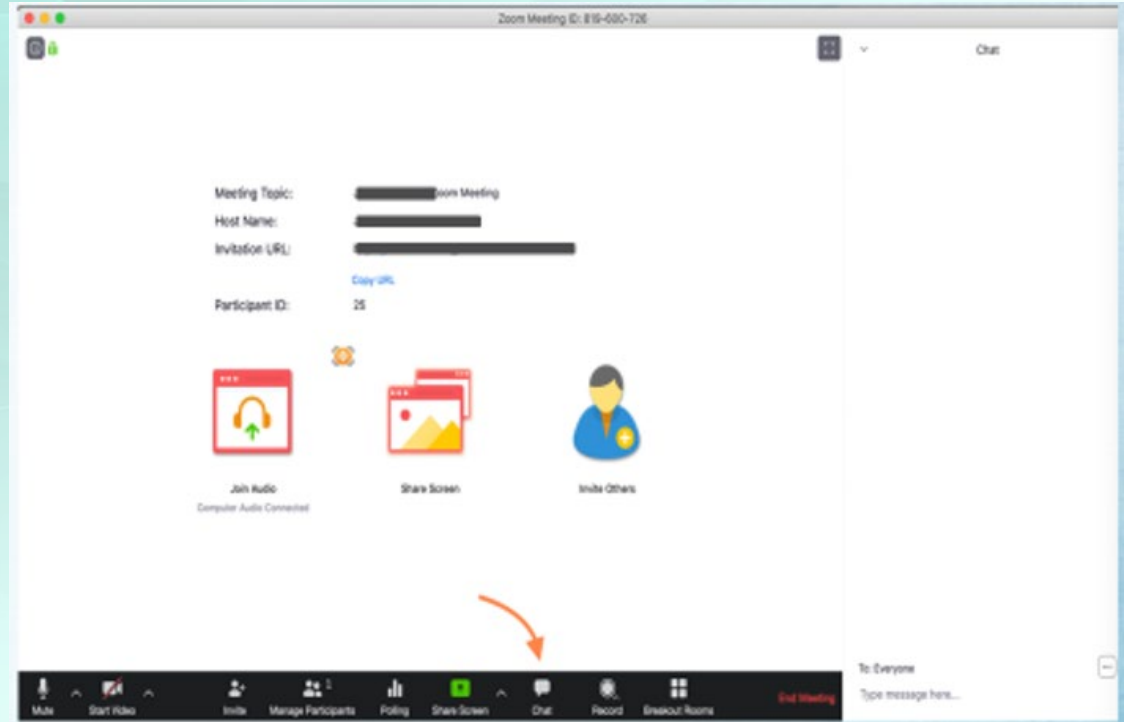
Click **Participants**, then **Raise Hand**. We'll also ask those on the phone.





# Chat

Click on the **chat** icon near the center bottom of your screen. You can choose to chat with the Host or Co-host in a “private” chat. Private chats are archived.

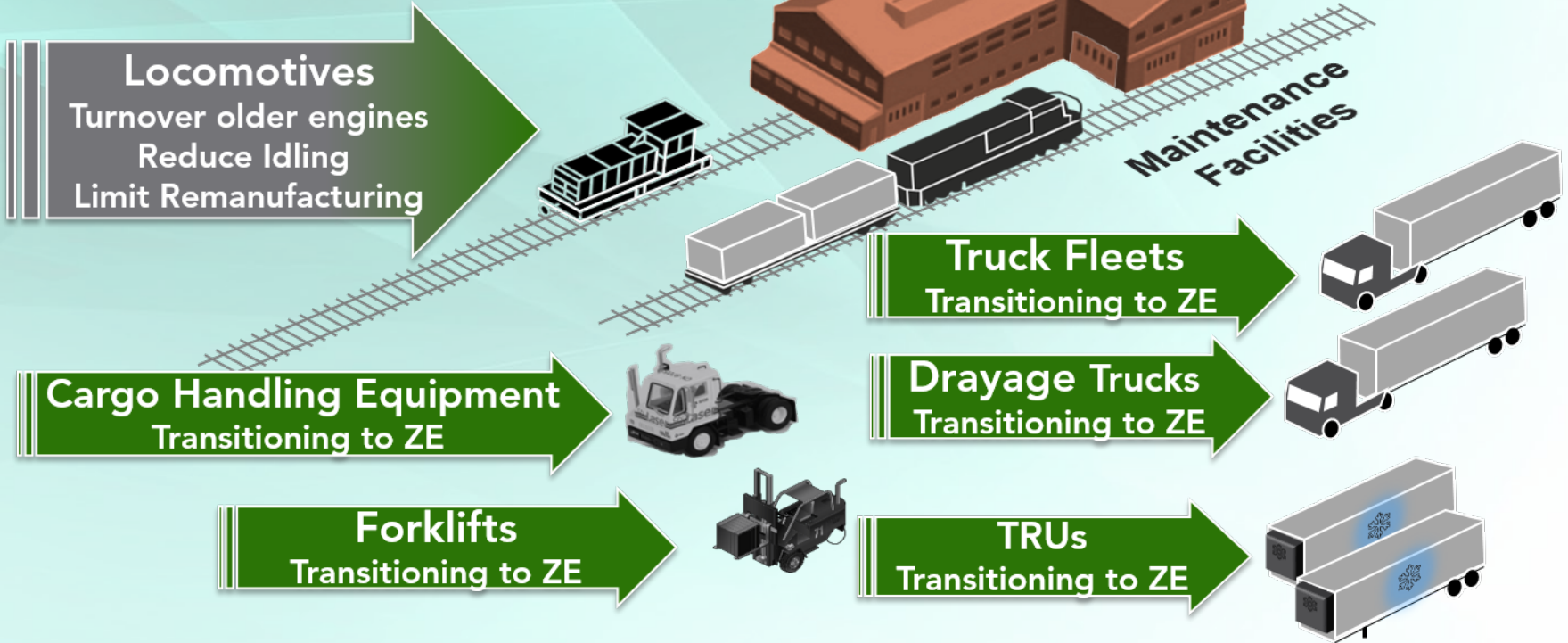


# Purpose of Listening Session

- Tell us about your experiences living and/or working near railyards
- What concerns do you have about railyards?
- Tell us how CARB can help!



# Railyard Equipment



# Categories of Railroads

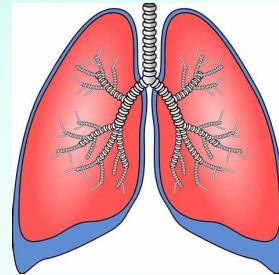
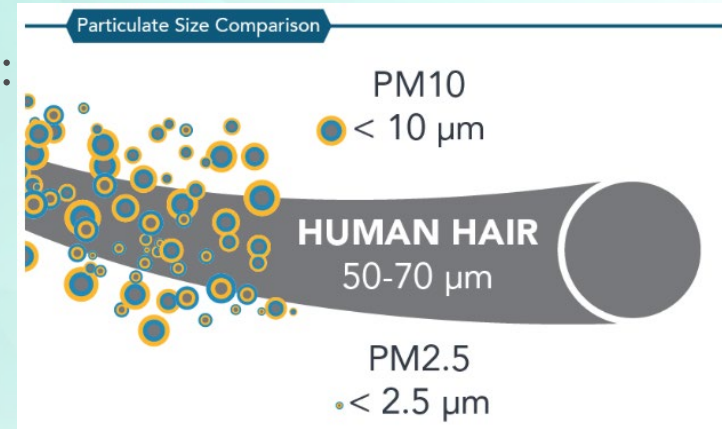
- Class 1 – 24/7 activity pulling freight nationwide
- Class 3 – Daily activity pulling freight within State
- Military and Industrial – Used as needed to deliver goods or move railcars within a facility
- Passenger – Daily activity transporting passengers



# Health Risks and Impacts

Exposure to diesel exhaust/PM2.5 can lead to:

- Acute respiratory symptoms
- Asthma exacerbations; emergency room visits for asthma
- Bronchitis; chronic obstructive pulmonary disease (COPD)
- Heart attacks
- Nervous system effects (e.g., cognitive deficits)
- Lost work days
- Premature death
- Increased risk for cancer



# For More Information

The screenshot shows the CARB website interface. At the top, there is a navigation bar with social media icons, a search bar, and language options. Below the navigation bar is a header with the CARB logo and a menu. The main content area features a large image of a train and a title 'Reducing Rail Emissions in California'. A sidebar on the left lists various resources. The main text describes CARB's efforts to reduce locomotive and railyard emissions. A central box highlights 'Concepts to Reduce Emissions from Locomotives and Railyards' with a 'LEARN MORE' button. Below this are three featured articles with images and titles: 'Draft Truck vs. Train Emissions Analysis', 'Beyond Tier 4 Locomotives', and 'Enforceable Agreements'.

**Reducing Rail Emissions in California** < BACK TO ALL PROGRAMS

**Reducing Rail Emissions in California**

About  
Resources  
Concepts to Reduce Emissions  
Meetings & Workshops  
Verifications, Demonstrations, and Incentives  
Subscribe

**PRIMARY CONTACT**  
Freight Transport Branch  
Email [freight@arb.ca.gov](mailto:freight@arb.ca.gov)  
Phone (916) 322-8382

**CATEGORIES**  
**Topics** Freight & Goods Movement, Trains & Railyards  
**Division** Transportation and Toxics Division

CARB has developed and implemented measures to understand and reduce locomotive and railyard emissions in California, including studies, regulations, enforceable agreements, and funding of clean technology.  
[MORE ABOUT THIS PROGRAM >](#)

**Concepts to Reduce Emissions from Locomotives and Railyards**

In the absence of federal action to address harmful emissions from locomotives CARB is developing a regulation to reduce criteria pollutants, toxic air contaminants, and greenhouse gas emissions for locomotives in-use. [LEARN MORE](#)

**Draft Truck vs. Train Emissions Analysis**  
Comparison of Truck and Train Emissions

**Beyond Tier 4 Locomotives**  
CARB Locomotive Petition to U.S. EPA

**Enforceable Agreements**  
CARB Agreements with Class 1 Railroads

Visit CARB's [Reducing Rail Emissions](https://ww2.arb.ca.gov/our-work/programs/reducing-rail-emissions-california) webpage at:

<https://ww2.arb.ca.gov/our-work/programs/reducing-rail-emissions-california>

# We Want to Hear From You!

## Getting Started – Discussion Follow Up

- Additional health impacts?
- Connecting with Railyard Operators

## Questions for You

- How has living/working near a railyard impacted you?
- How can CARB staff help to address your concerns?
- What do you want to see in upcoming regulations?

# Contact Us!

Freight Transport Branch Webpage:  
[Reducing Rail Emissions in California](#)

Program Email:  
[freight@arb.ca.gov](mailto:freight@arb.ca.gov)

CARB Environmental Justice Blog  
<https://carbej.blogspot.com/>