

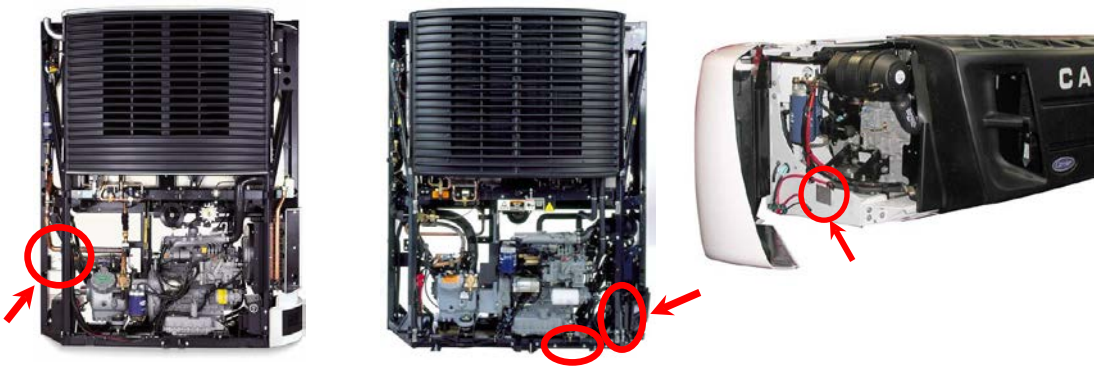


# Carrier TRU Reporting For ARB Equipment Registration (ARBER)

Per TRU Advisory 08-06, you need the unit make, model, model year and serial number to register the TRU. Registration is mandatory for California based fleets and voluntary for non-California based fleets.

## STEP 1: ID your Fleet

Locating the TRU Serial Number

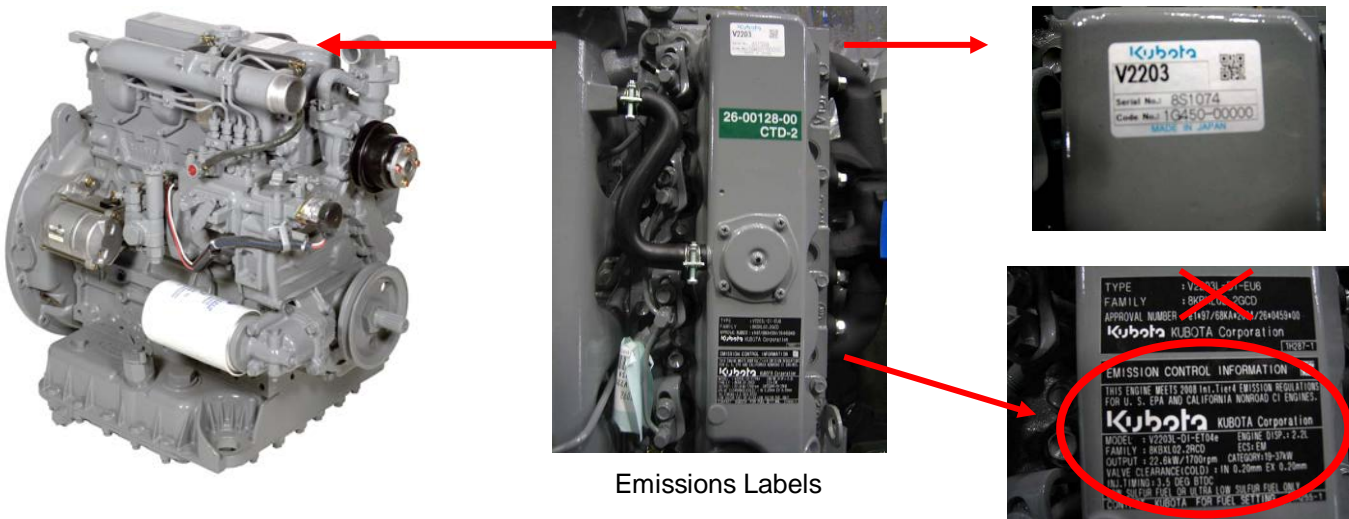


Carrier		Athens, Ga.	
Model Name:	X2 2100A		
Serial No.:	NAE91228487		
Model No.:	NL334.A-AB-B		
Warranty ID:	708267		
Refrigerant:	R484A 20 lbs.		
Standby:			
Max. Op. Press. LP:	180psig / HP: 465psig		
COMPONENT	MONTHS	MONTH	
Basic Unit	12	1 2 3	
Engine	24 36	4 5 6	
Compressor	24 36	7 8 9	
Elec. Step. Vlv.	24 36	10 11 12	
Ref. Coils/Rad	24 36		
Solenoid Valves	24 36	YEAR	
Microprocessor	24 36	2010	
Gear Box	24 36	2011	
Fan Shaft	24 36	2012	
Fuel Pumps	24 36	2013	
Standby Motor			
Unit - Parts & Labor, Unlimited Hours			
8000 - Parts & Labor, 8000 Hour Limit			
DATE IN SERVICE		DAY	
1 2 3 4 5 6 7 8 9 10 11		12	
12 13 14 15 16 17 18 19 20 21 22		23 24 25 26 27 28 29 30 31	
22 24 26 28 30			
Made in USA			

Unit Serial Number Label

## STEP 2: ID your Engine

Locating the Engine Emissions Labels



Emissions Labels

# STEP 3: Register with CARB

## Fill Out: TRANSPORT REFRIGERATION UNIT ATCM MODEL-ENGINE-COMPLIANCE INFORMATION FORM SSD/EAB-FORM #TRU-MEC (#30)

[http://www.arb.ca.gov/arber/documents/trudocs/tru\\_mec\\_05\\_09.pdf](http://www.arb.ca.gov/arber/documents/trudocs/tru_mec_05_09.pdf)

### Enter TRU Unit Information

#### TRU/TRU Generator Set Unit Information

\*indicates required field

Provide TRU/TRU Generator Set unit information here. Do not provide engine information on this page. The engine information must be entered on the compliance information page (page 3 of this form).

TRU/TRU Generator Set Unit Type\*  TRU  TRU Generator Set

TRU/TRU Generator Set Unit Manufacturer*	Carrier Transicold
TRU/TRU Generator Set Unit Model*	
TRU/TRU Generator Set Unit Model Year*	
TRU/TRU Generator Set Unit Serial Number*	
TRU/TRU Generator Set Unit ID	Leave blank - N/A for Carrier

Use the TRU serial number to determine the model year.

Sample Serial Number: **ABC12345678**

If the 1 <sup>st</sup> digit is	and the 3 <sup>rd</sup> digit is	TRU Model Year is
A thru G	A thru Z	2001 or earlier
H	A thru M	
H	N thru Z	2002
J	A	
J	B thru N	2003
J	P thru Z	
K	A or B	2004
K	C thru P	
K	R thru Z	2005
L	A thru C	
L	D thru R	2006
L	S thru Z	
M	A thru D	2007
M	E thru S	
M	T thru Z	2008
N	A thru E	
N	F thru T	2009
N	U thru Z	
P	A thru F	2010
P	G thru U	
P	V thru Z	2011
R	A thru G	
R	H thru V	2012
R	W thru Z	
S	A thru H	2013
		2014
		2015
		2016



Unit Serial Number Label

**TRU Engine Information (all fields required)**

TRU Engine Manufacturer

Kubota

Power Rating

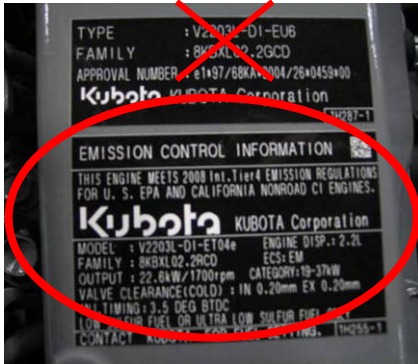
<25HP (<19kW)

≥25HP (≥19kW)

TRU Engine Model

TRU Engine Model Year

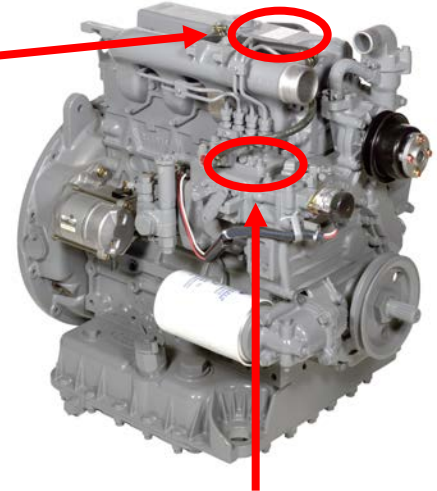
TRU Engine Serial Number



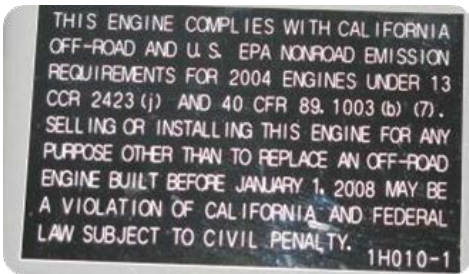
Engine Model, Model Year & Power Rating



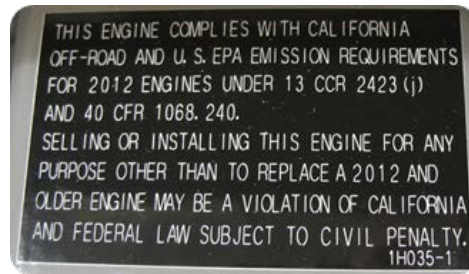
Serial Number



Alternate Serial Number location Stamped on engine block



Engines incorporating this REPLACEMENT ENGINE label on the valve cover are Tier 2 engines and are considered a 2007 Engine Model Year regardless of engine build year.



Engines incorporating this REPLACEMENT ENGINE label on the valve cover are Tier 4i engines and are considered a 2012 Engine Model Year regardless of engine build year.

## STEP 4: Contact your local Carrier Transcold Dealer

[www.carrier.com/truck-trailer](http://www.carrier.com/truck-trailer)

[www.carrier.com/performance-parts](http://www.carrier.com/performance-parts)

