

Sustainable Communities

Sustainable **buildings, cities,
communities and **infrastructure**
that are clean, healthy, and
livable and improve quality of
life **for all**.**

Legislation

SB 375, SB 535, AB 1550, SB 1000, SB 862, AB 2722

communities driving projects

Policy

**Sustainable Communities Strategies, Climate Action Plans,
Safeguarding, Transformative Climate Communities**

Partnerships

**Community Watershed Resilience Program
Enterprise Community Partners**

**Sustainable buildings, cities,
communities and infrastructure
that are clean, healthy, and
livable and improve quality of
life for all.**

zero emission buildings

Legislation

AB 758, AB 802, SB 350

Policy

New construction codes and appliance standards

2019 New Constuction Standards

Partnerships

With local jurisdictions developed photovoltaic model ordinance

Declartation

pledge to enact regulations to ensure new buildings are net zero carbon by 2030; existing buildings by 2050

Sustainable **buildings, cities,
communities and **infrastructure**
that are clean, healthy, and
livable and improve quality of
life **for all**.**

Policy

75% organics diversion by 2025; mattress recycling by 2020

zero waste & infrastructure

Partnerships

Pacific Coast Collaborative

Declaration

pledge to reduce the amount of waste generated by at least 15% per capita by 2030

infrastructure

Green and Healthy Streets

**pledge to make a major area of their city zero emission by 2030
and encourage shift to biking, walking, and transit**

Sustainable **buildings, cities,
communities and **infrastructure**
that are clean, healthy, and
livable and improve quality of
life **for all**.**

for all



George Steinmetz, New York Times





for all

| Day | Session Title |
|-----|--|
| 1 | HIGH AMBITION VISION (plenary) |
| | ACHIEVING AN EQUITABLE LOW-CARBON TRANSITION (plenary) |
| | Challenge Area 3 Session 1: GREEN AND HEALTHY STREETS |
| | Challenge Area 3 Session 2: TOWARDS ZERO WASTE |
| | Challenge Area 3 Session 3: NET ZERO EMISSION BUILDINGS |
| 2 | LONG-TERM STRATEGIES FOR A 1.5 DEG WORLD (plenary) |
| | RESEARCH & INNOVATION TO ACCELERATE THE TRANSITION (plenary) |
| | TOGETHER4CLIMATE: PARTNERSHIPS FOR CLIMATE ACTION |
| 3 | RESILIENT COMMUNITIES FOR A CLIMATE SAFE FUTURE |

CHViz

127.0.0.1:5545

Apps CHPRs outlook.office.com Citation Machine: Bill music CDPHIntra Office of Health Equ capAndTrade R CCB ResilientCA ABAG Planning: Reg The Challenge - A G TIMS - Transportat ColorBrewer Other bookmarks

CCHViz About Vulnerability County Snapshot Single Indicator Query the Data How to Use

Welcome to CCHViz

CCHViz is the interactive data visualization platform for the Climate Change & Health Vulnerability Indicators for California (CCHVIs). It is produced by the CA Department of Public Health's [Office of Health Equity](#).

The CalBRACE Project produced Climate Change and Health Vulnerability Indicators to help stakeholders better understand the people and places that are more susceptible to adverse health impacts associated with climate change. They are a suite of 21 indicators (below) of climate exposure, population sensitivity, and adaptive capacity to the impacts of climate change. These indicators are being used by local and state programs to plan to meet the needs of the communities most at risk of harm from climate change.

Indicator data are available for download on the 'Download Your Data' tab or from the [CalBRACE website](#). You can also download narratives describing each indicator's significance to climate change and health, the evidence that links the indicator to health outcomes, data sources, bibliographic references, methodology, and limitations that impact the interpretation of the indicator.

Our Indicators

Exposures

- Projected number of extreme heat days | [description](#) | [data](#)
- Three-year ozone concentration exceedance | [description](#) | [data](#)
- Annual Mean Ambient Concentration of Fine Particulate Matter (PM_{2.5}) | [description](#) | [data](#)
- % of population currently living in very high wildfire risk areas | [description](#) | [data](#)
- Population living in sea level rise inundation areas | [description](#) | [data](#)

Sensitive Populations

- % of population age less than 5 years | [description](#) | [data](#)
- % of population aged 65 years or older | [description](#) | [data](#)
- Overall, concentrated, and child (0 to 18 years of age) poverty rate | [description](#) | [data](#)
- High School or Greater Educational Attainment in the Population Aged 25 Years and Older | [description](#) | [data](#)
- % of population employed and aged > 16 working outdoors | [description](#) | [data](#)
- % of households with no vehicle ownership | [description](#) | [data](#)
- % of households with no one aged > 14 years speaking English | [description](#) | [data](#)
- % of population with a mental or physical disability | [description](#) | [data](#)
- % of adults aged 18-64 without health insurance | [description](#) | [data](#)
- Number of Violent Crimes per 1,000 Population | [description](#) | [data](#)

Adaptive Capacity

- % of households without air conditioning | [description](#) | [data](#)
- % without tree canopy coverage | [description](#) | [data](#)
- % impervious surface cover | [description](#) | [data](#)

| | | |
|-------------------------|-----------------------------------|--|
| ENVIRONMENTAL EXPOSURES | Extreme Heat Days | Projected number of extreme heat days ¹ |
| | Air Quality (PM _{2.5}) | Three-year annual mean concentration of particulate matter (PM _{2.5}) ^{3, 6} |
| | Air Quality (ozone) | Three-year ozone concentration exceedance above state standard ^{3, 6} |
| | Wildfires | Percent of population currently living in high risk fire hazard zone ^{4, 6} |
| | Sea Level Rise (in coastal areas) | Percent of population living in 100-year flood zone and 55 inches of sea level rise ^{12, 6} |
| POPULATION SENSITIVITY | Children | Percent of population aged less than 5 years ⁴ |
| | Elderly | Percent of population aged 65 years or older ⁴ |
| | Poverty | Percent of population whose income in the past year was below poverty level ⁷ |
| | Education | Percent of population aged ≥ 25 years with less than high school educational attainment ⁷ |
| | Outdoor Workers | Percent of population employed and aged ≥ 16 years working outdoors ⁷ |
| | Vehicle Ownership | Percent of occupied households with no vehicle ownership ⁷ |
| | Linguistic Isolation | Percent of households with no one aged > 14 years speaking English ⁷ |
| | Physical Disability | Percent of population with physical disability (ambulatory disability) ⁸ |
| | Mental Disability | Percent of population with mental disability (cognitive disability) ⁸ |
| | Health Insurance | Percent of population without health insurance ⁹ |
| ADAPTIVE CAPACITY | Violent Crime Rate | Number of violent crimes per 1,000 residents ¹⁰ |
| | Air Conditioning | Percent of households without air conditioning ^{11, 6} |
| | Tree Canopy | Percent of area not covered by tree canopy ^{12, 6} |
| | Impervious Surfaces | Percent of area covered by impervious surfaces ^{12, 6} |

**Indicator is weighted by population, which means the value of the indicator will be higher or lower depending on population density in the locality.*

Data Sources:

1: CalAdapt, Scripps Institute of Oceanography (projected 2050, 2090), accessed 12/2016

2: CalAdapt; Pacific Institute; U.S. Geological Survey (USGS) (projected 2100), accessed 12/2016

3: California Air Resources Board (2009-2011); CalEnviroScreen 2.0 (2009-2011) 4: California Department of Forestry and Fire (CAL FIRE) (2007)

7: American Community Survey (ACS) by U.S. Census Bureau (2006-2010)

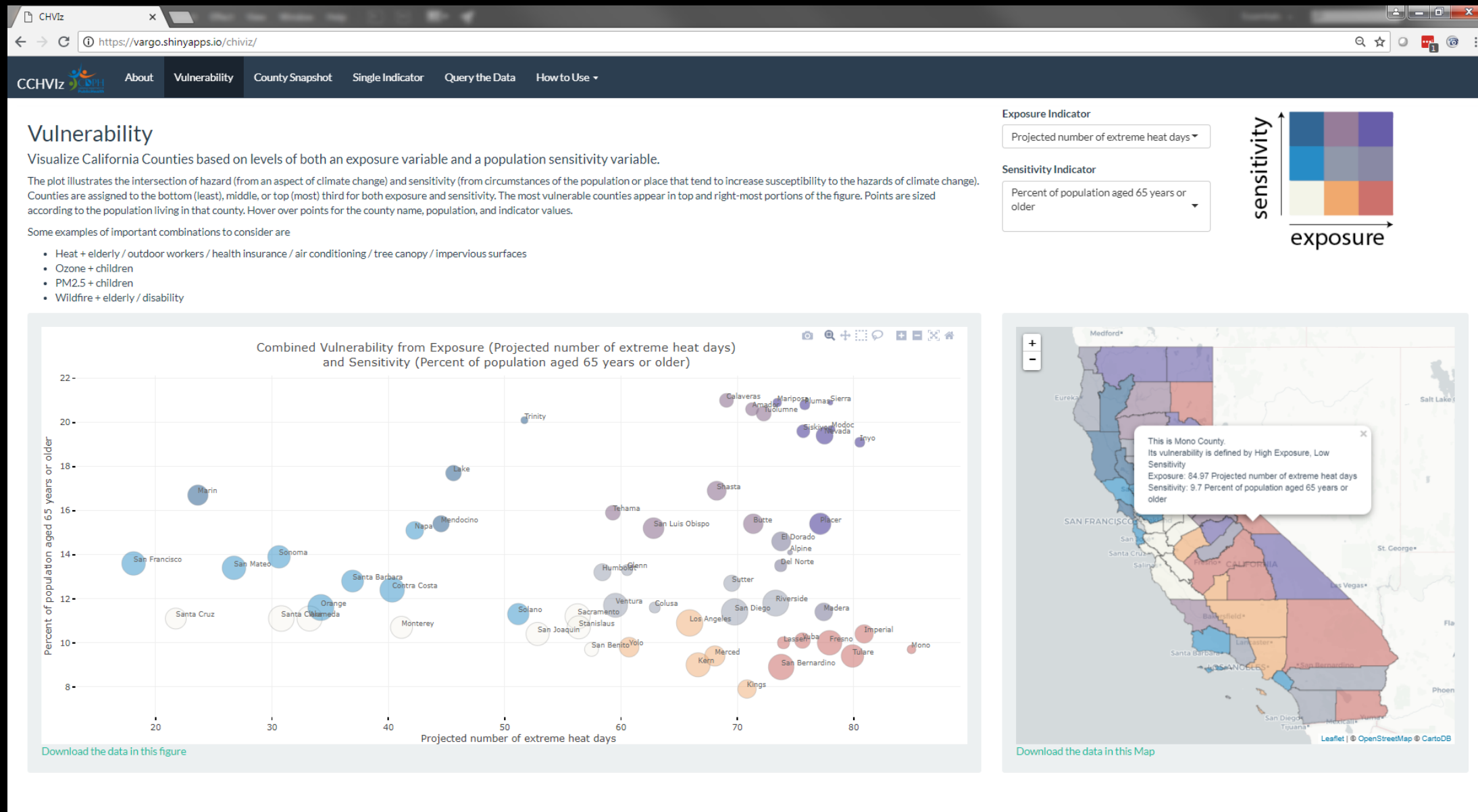
8: American Community Survey (ACS) by U.S. Census Bureau, (2008-2012)

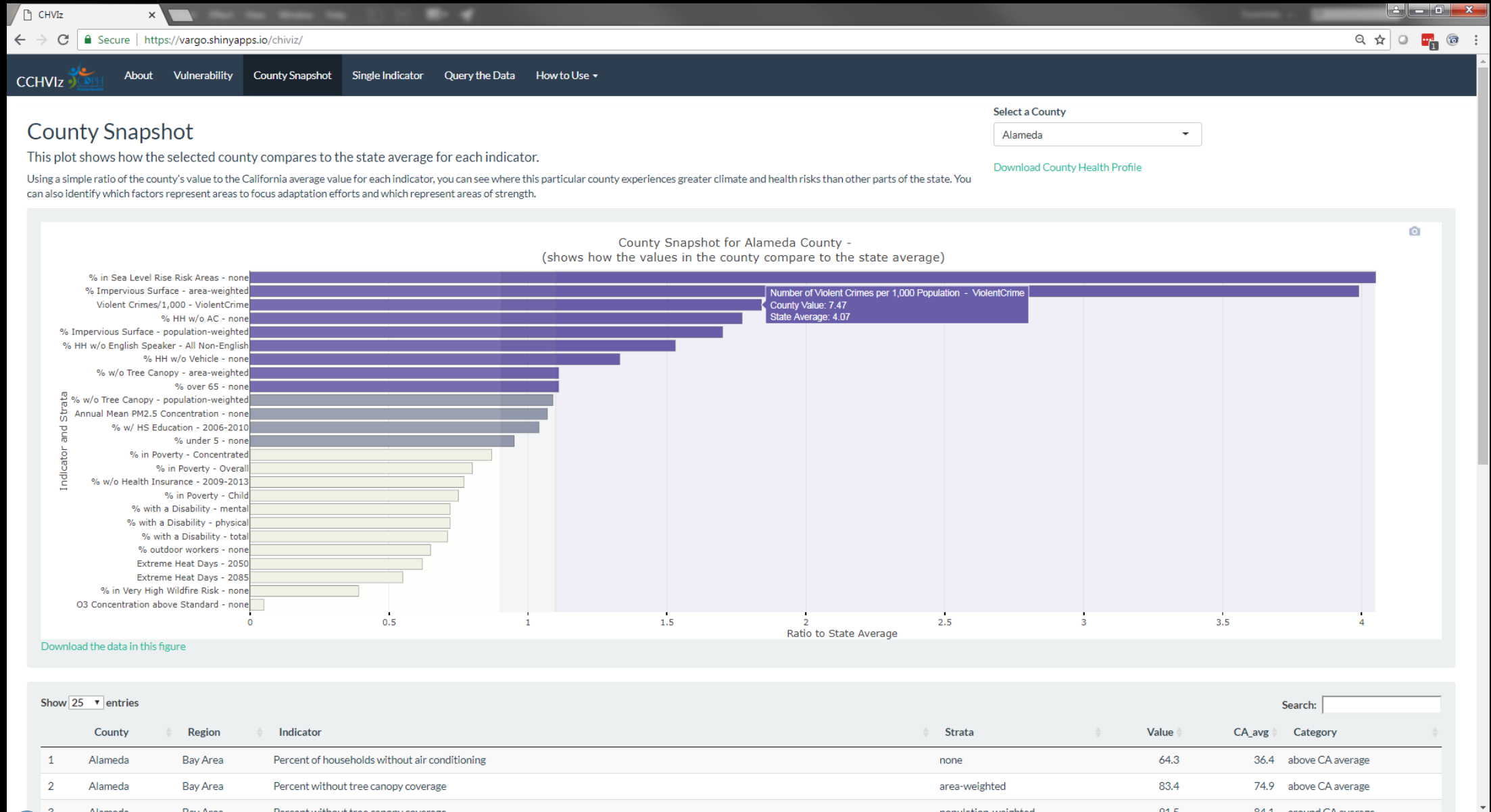
9: American Community Survey (ACS) by U.S. Census Bureau, (2009-2013, 2011-2013)

10: Uniform Crime Reports from U.S. Federal Bureau of Investigation (2013)

11: Residential Appliance Saturation Survey (RASS)

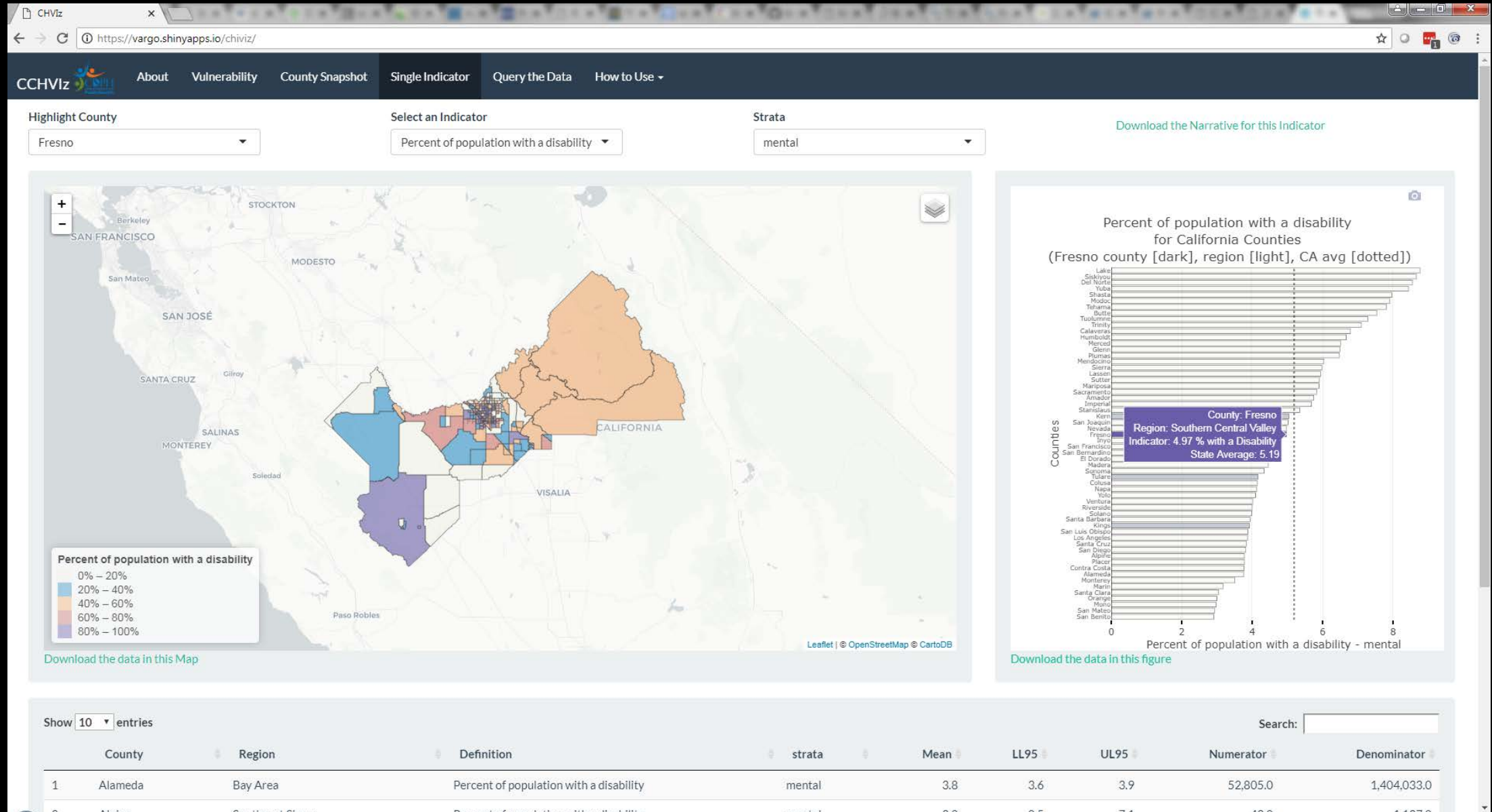
Latest Updates





CCHViz

https://discovery.cdph.ca.gov/ohe/CCHViz/



CCHViz

https://discovery.cdph.ca.gov/ohe/CCHViz/

CHViz

https://vargo.shinyapps.io/chviz/

CCHViz

AboutVulnerabilityCounty SnapshotSingle IndicatorQuery the DataHow to Use

Select a County

Contra Costa

Select an Indicator

Population living in sea level rise inundation areas

Download Selected Data

Show 25 entries

Search:

| | County | Region | Definition | Strata | Race | Mean | LL95 | UL95 | Numerator | Denominator |
|---|--------------|----------|--|--------|-----------|------|------|------|-----------|-------------|
| 1 | Contra Costa | Bay Area | Population living in sea level rise inundation areas | none | AIAN | 1.2 | 0.8 | 1.6 | 37 | 2,984 |
| 2 | Contra Costa | Bay Area | Population living in sea level rise inundation areas | none | Asian | 0.8 | 0.7 | 0.8 | 1,162 | 148,881 |
| 3 | Contra Costa | Bay Area | Population living in sea level rise inundation areas | none | AfricanAm | 1.9 | 1.8 | 2.0 | 1,761 | 93,604 |
| 4 | Contra Costa | Bay Area | Population living in sea level rise inundation areas | none | Latino | 1.4 | 1.3 | 1.4 | 3,549 | 255,560 |
| 5 | Contra Costa | Bay Area | Population living in sea level rise inundation areas | none | NHOPI | 1.2 | 0.9 | 1.5 | 53 | 4,382 |
| 6 | Contra Costa | Bay Area | Population living in sea level rise inundation areas | none | White | 0.4 | 0.4 | 0.4 | 2,090 | 500,923 |
| 7 | Contra Costa | Bay Area | Population living in sea level rise inundation areas | none | Multiple | 0.7 | 0.6 | 0.8 | 282 | 39,569 |
| 8 | Contra Costa | Bay Area | Population living in sea level rise inundation areas | none | Other | 1.4 | 1.0 | 1.8 | 43 | 3,122 |
| 9 | Contra Costa | Bay Area | Population living in sea level rise inundation areas | none | Total | 0.9 | 0.8 | 0.9 | 8,977 | 1,049,025 |

Showing 1 to 9 of 9 entries

Previous

1

Next