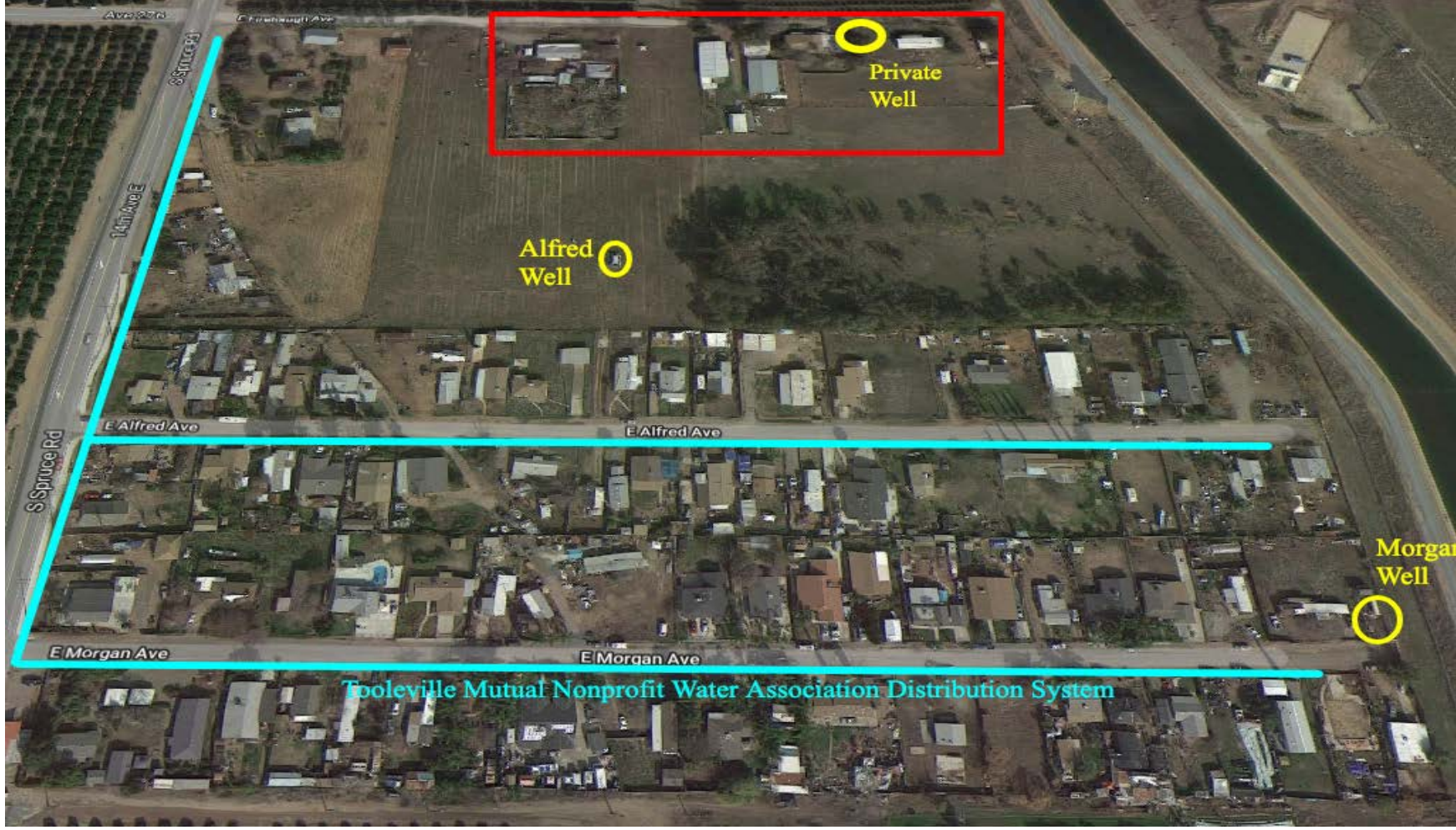

Tooleville Community Vulnerability Assessment



Pedro Hernandez
Leadership Counsel for Justice & Accountability



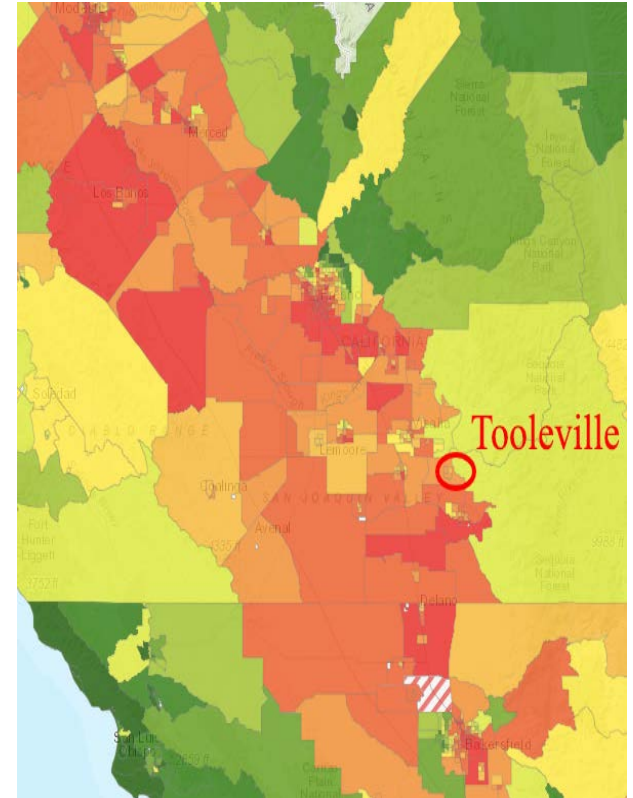
Tooleville, Tulare County California



Drinking Water Infrastructure in Tooleville

Environmental and Social Vulnerability

- Groundwater Quality and Levels during Drought
 - Critically overdrafted basin
 - Community water system is stressed in Summer, affecting water access and swamp coolers
 - Contaminations include Nitrate, Arsenic, Chrom - 6, Electrical Conveyance
- Economic
 - State Public Resources Code 75005 designates Tooleville as a “Severely Disadvantaged Community.” The Community average household income is \$29,455, 30% lower than the Tulare County average of \$42,031 and 52% lower than the state average of \$61,818.
 - Minimal state funding for Operations and Maintenance
 - Limited funding for replacement water program
- Social
 - Linguistic Isolation
 - Barriers to Health Care
- Additional Considerations
 - Increased temperatures and projected increase in population



-
- Specific impacts of high temperatures reported include reports of dehydration, sunburn, and concern for children who can't go outside when the temperatures are too high.
 - Five out the eighteen respondents also indicated that low water pressure may limit the effectiveness of swamp coolers during high temperatures.
 - Only 6% of respondents' households use tap water for cooking and none of the respondents use it for drinking, while all respondents use tap water for non-potable uses such as watering plants, and washing clothes and dishes



Recommendations

- Secure Statewide Funding for Safe and Affordable Drinking Water
 - Partner w/ CBOs and Community Groups
 - Dedicate Local Staff to Establishing Relationships
 - Conduct Further Localized Examinations into Environmental Vulnerability
-

Contact Information

Pedro Hernandez
Policy Advocate,
Leadership Counsel for Justice &
Accountability

phernandez@leadershipcounsel.org

(559) 369 - 2790
