

# Mobile Monitoring Platform Update

California Air Resources Board/UCLA

Kathleen Kozawa, Arthur Winer

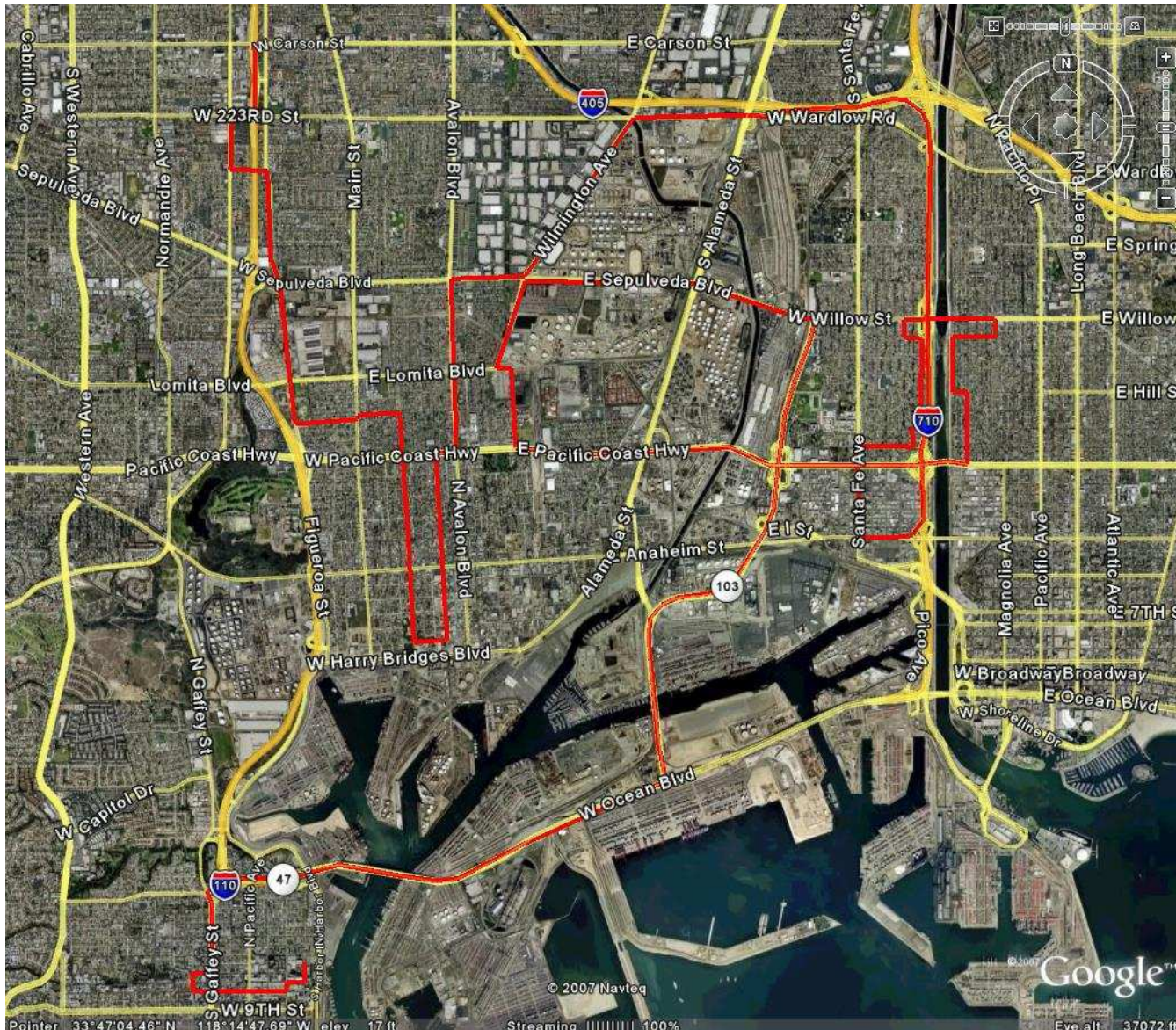
[kkozawa@arb.ca.gov](mailto:kkozawa@arb.ca.gov)

August 1, 2007

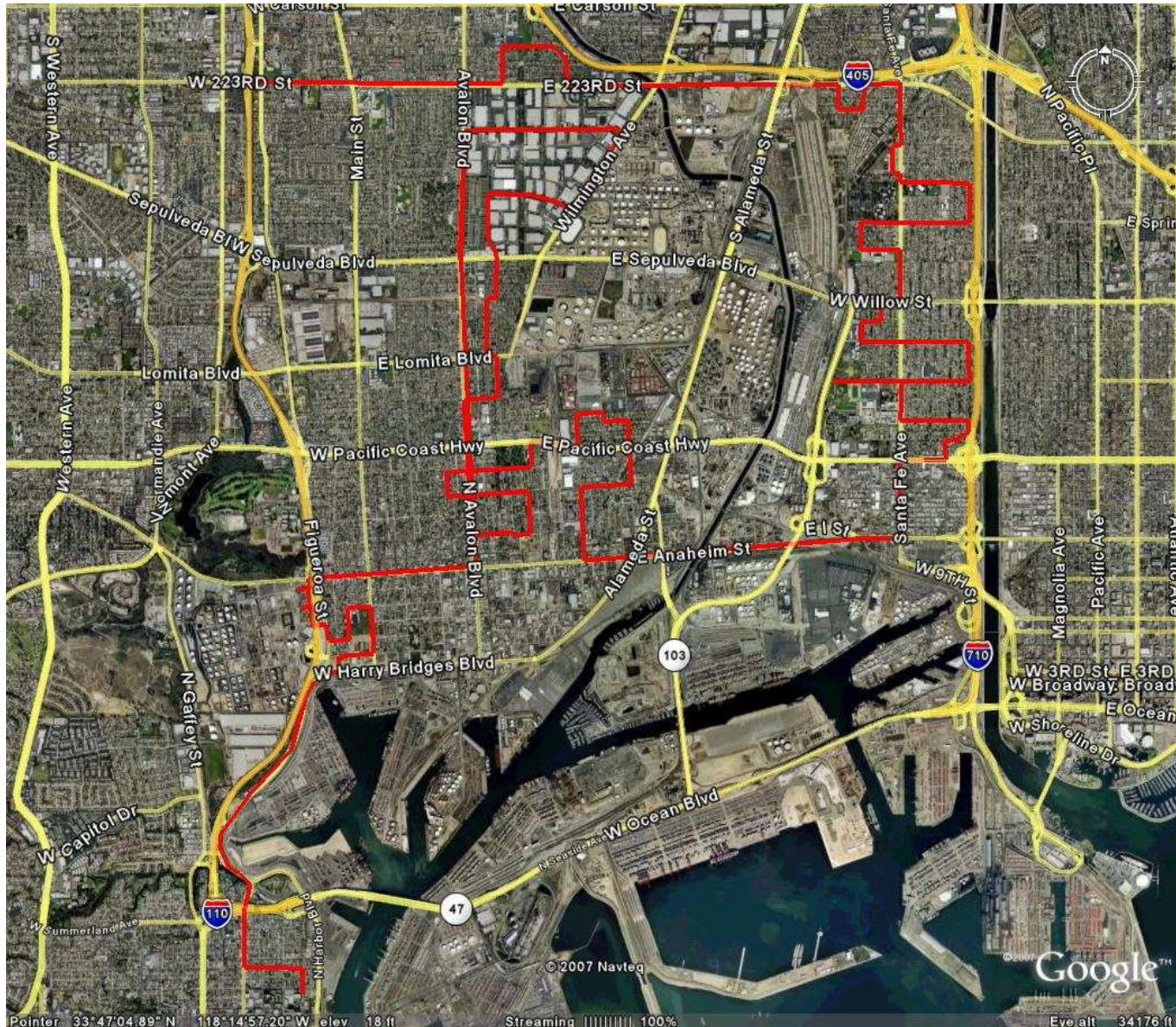
# Mobile Platform

- Overall Goals
  - Tool for assessing community exposure
  - Local versus regional sources
- Main Study
  - Winter Sampling February-March 2007
  - Summer Sampling July-August 2007
- Methods
- Results (DRAFT)

# Port/Freeway/Truck Route

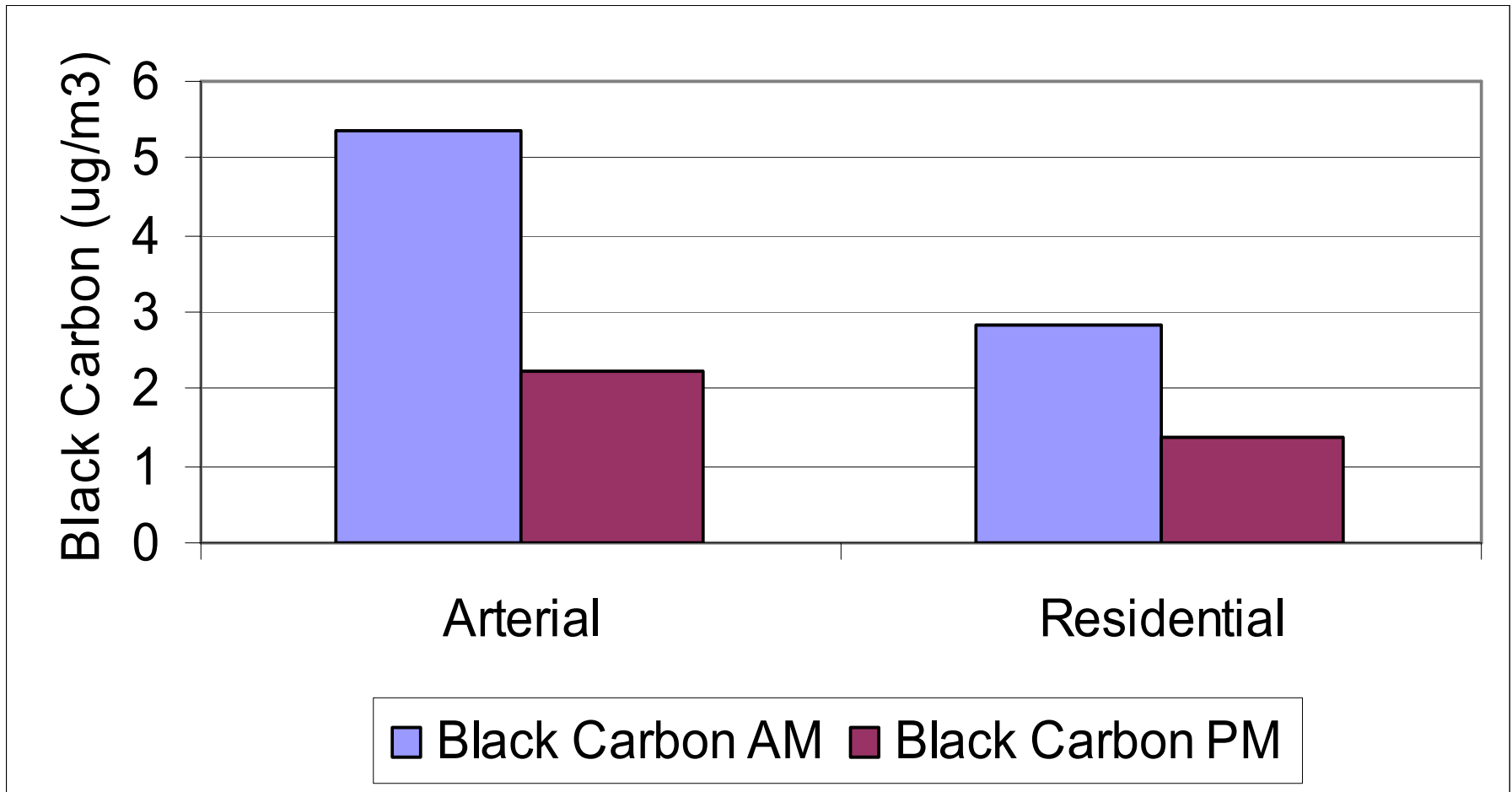


# Residential Route



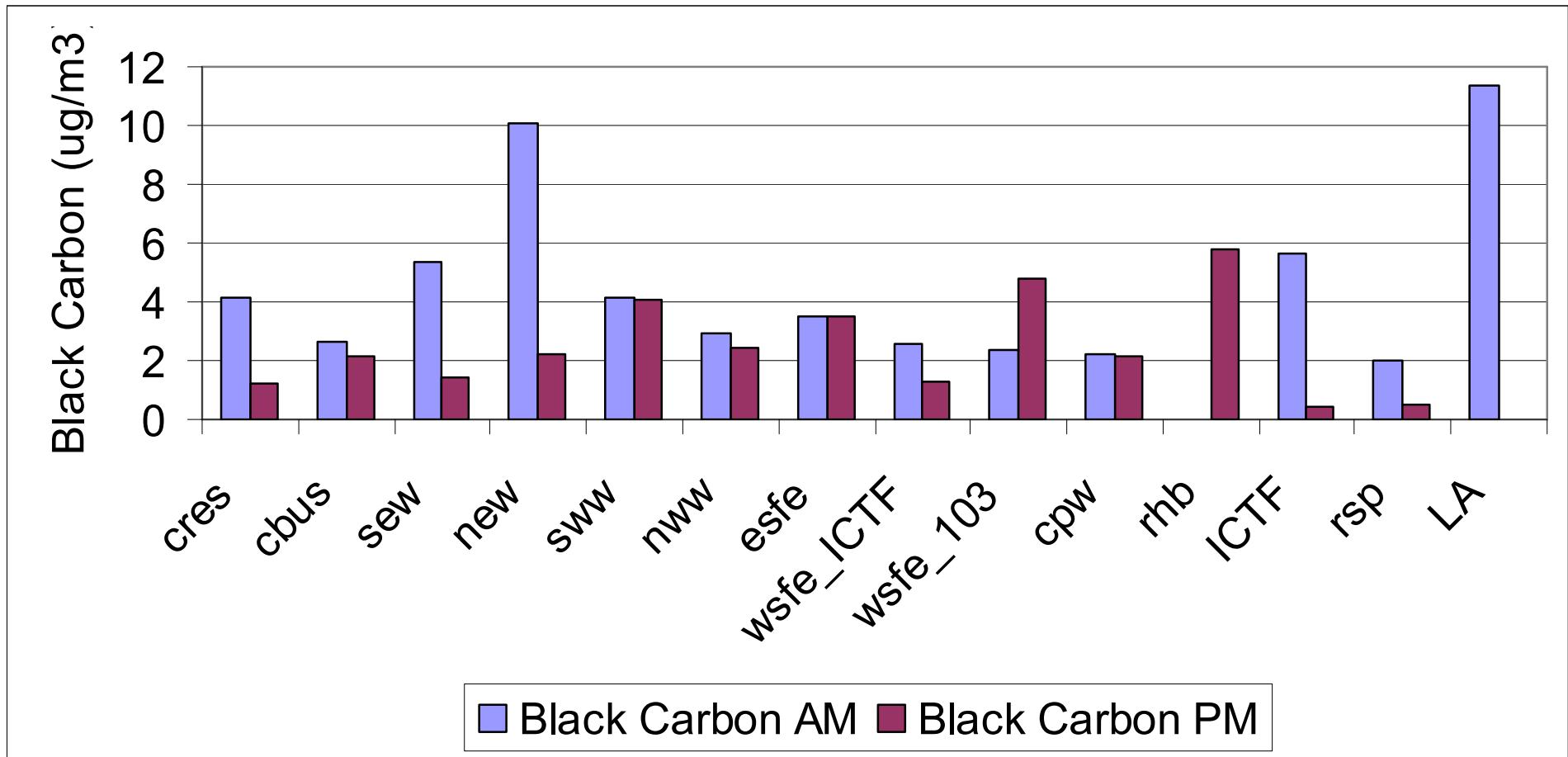
# DRAFT Winter Results

## Effect of Road Type and Time of Day



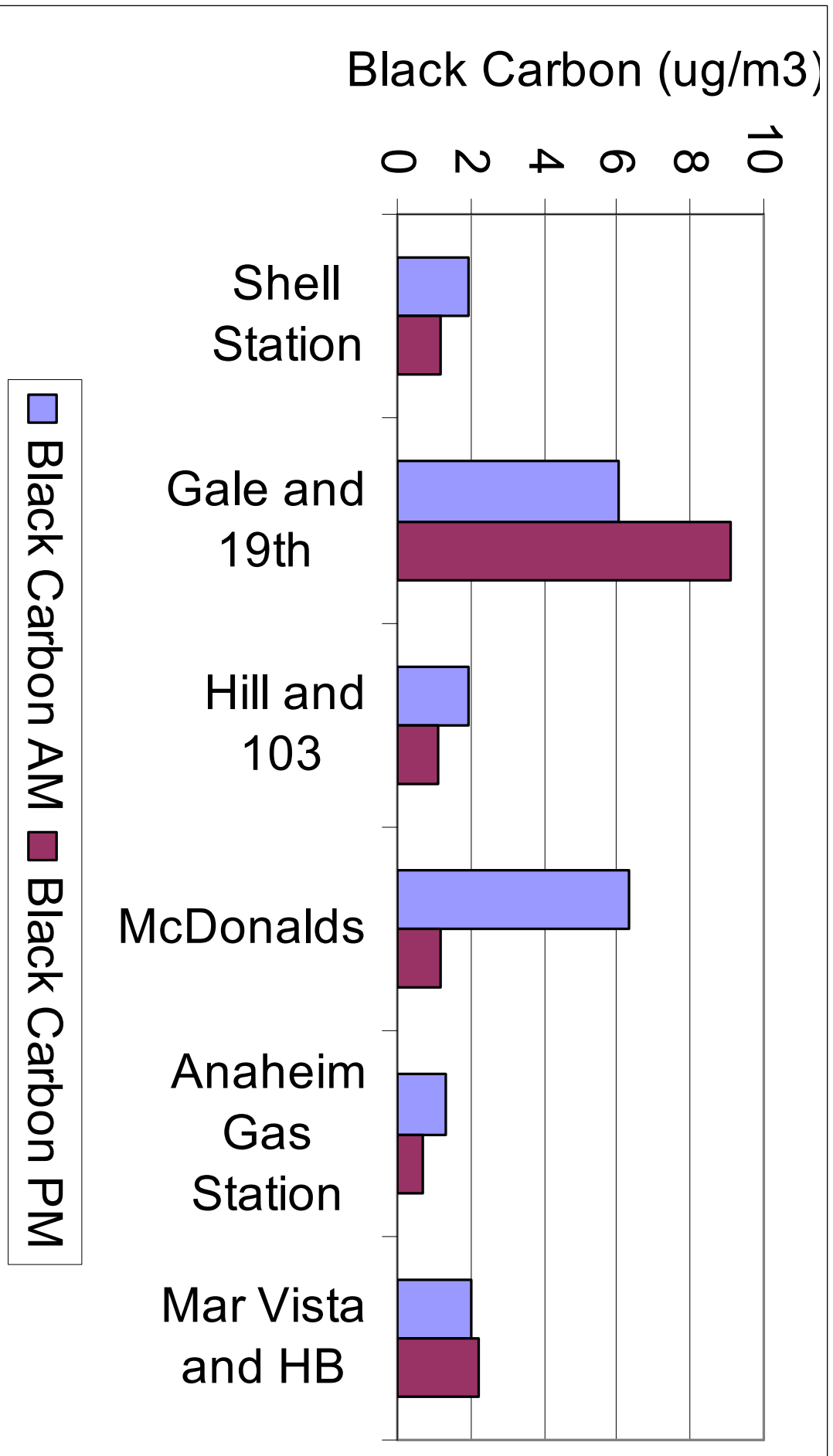
# DRAFT Winter Results

## Effect of Location and Time of Day



# DRAFT Winter Results

## Stationary Data



# Summary

- Winter Study Results
  - Increased concentrations in the morning relative to the afternoon
  - Variability between neighborhoods
  - Importance of wind direction
- Important addition of Stationary Sites for near-road exposures
- Summer Study (July-August 2007)
  - Observations (lower AM concentrations, higher WS in PM, different WD), addition of LA loop



# Acknowledgements

- Scott Fruin, USC
- ARB Staff
- Port of Los Angeles

# DRAFT Winter Results

## Effect of Location and Time of Day

