

An aerial photograph of a coastal city, likely Wilmington, California, showing a mix of urban development, green spaces, and a harbor area. The city is nestled between a dark blue ocean on the left and a large body of water on the right. In the background, there are rugged, green mountains. The text is overlaid on the image.

Harbor Communities Monitoring Meeting

April 17, 2008

Wilmington Senior Center

1371 Eubank Street
Wilmington, CA 90744
6:00 p.m. – 8:30 p.m.

Agenda

- **Introductions**
- **Overview of CARB's Harbor Communities Monitoring Study**
- **Overview of preliminary results**
 - **Desert Research Institute Air Quality Study**
 - **UCLA Mobile Platform Study**
 - **USC Ultra-fine Particle Count Study**
- **Continuing/planned monitoring efforts**
 - **SCAQMD**
 - **Ports of Los Angeles and Long Beach**
 - **UCLA Time-Location Activity Study**
- **General Q&A/discussion**
- **Technical Q&A/discussion**

Major Objectives of the HCMS

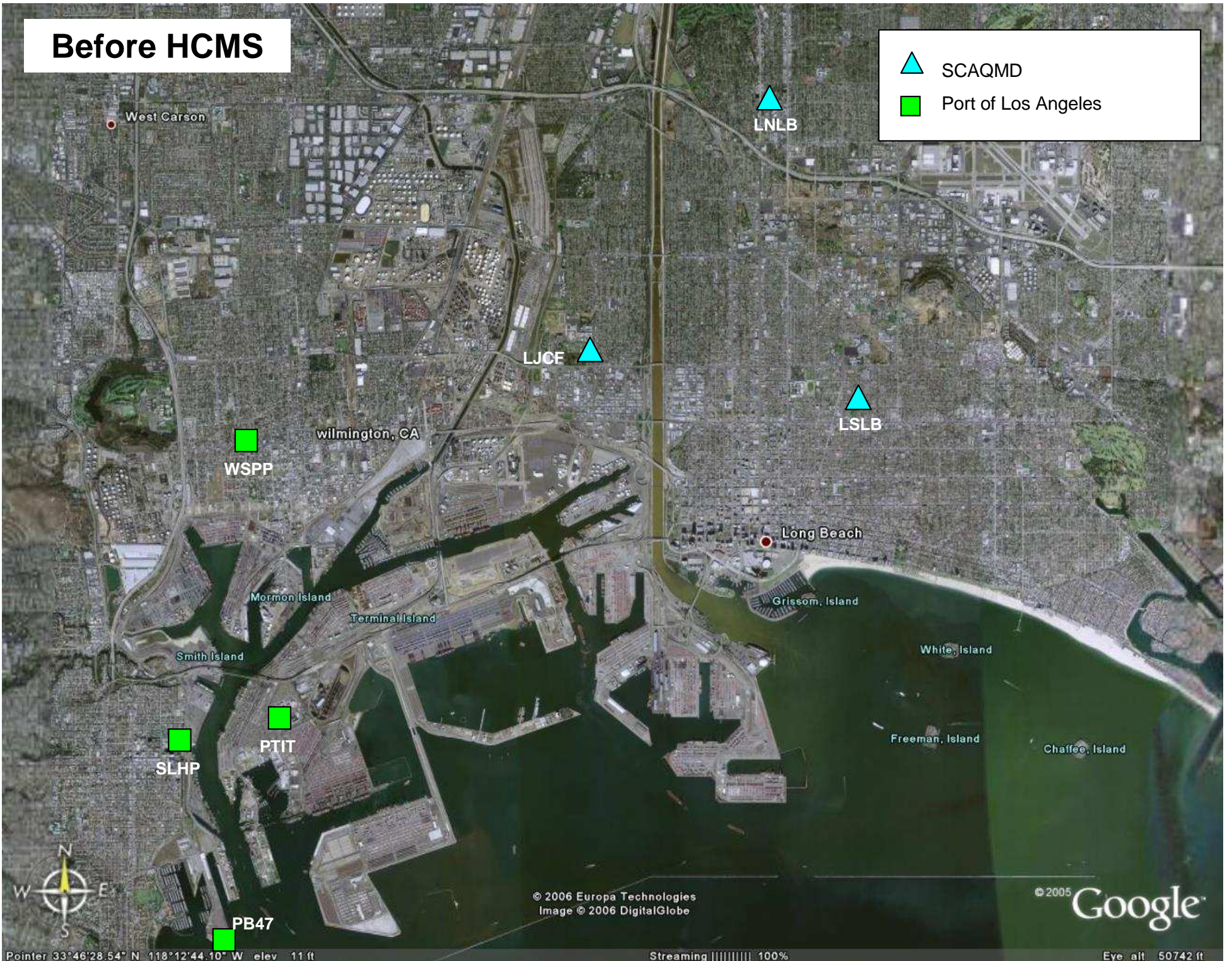
- 1) Characterize spatial & temporal variations in pollutants – assess permanent network
- 2) Characterize pollutant concentration gradients near various types of emission sources
- 3) Characterize baseline conditions as various emission reduction programs take effect
- 4) Investigate lower cost approach for estimating annual mean concentrations of toxic compounds

Major Sampling Efforts in HCMS

- 1) DRI – various air quality measurements
 - 23 sites, 4 seasons, 4 weeks/season
- 2) UCLA – mobile monitoring platform
 - 12-15 days (am/pm)/season (winter/summer/+)
- 3) USC – particle counts
 - 12 sites, continuous (mid-Feb – mid-Dec)

Before HCMS

- ▲ SCAQMD
- Port of Los Angeles



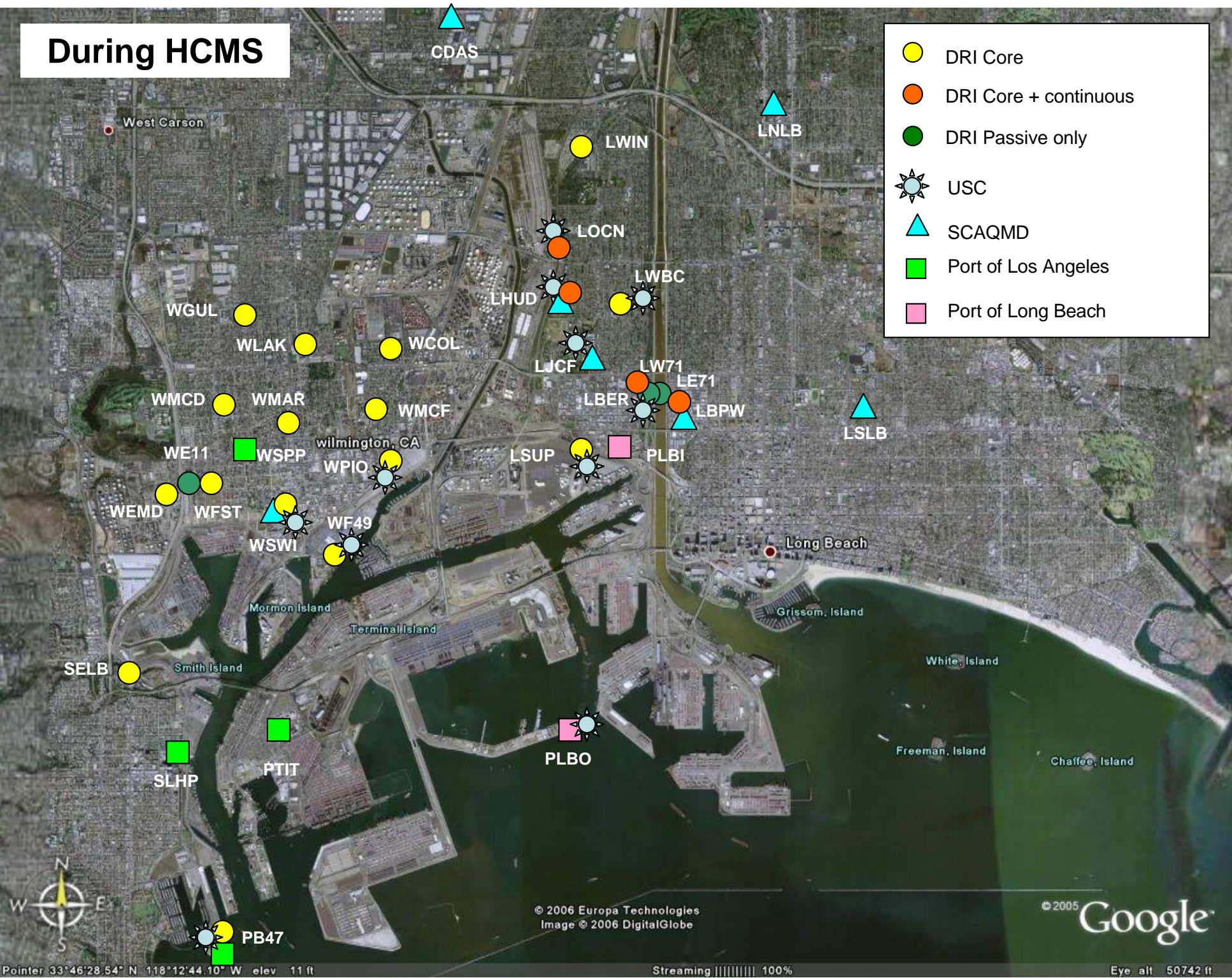
Pointer 33°46'28.54" N 118°12'44.10" W elev 11 ft

Streaming ||||| 100%

Eye alt 50742 ft

During HCMS

- DRI Core
- DRI Core + continuous
- DRI Passive only
- ☼ USC
- ▲ SCAQMD
- Port of Los Angeles
- Port of Long Beach



Pointer 33°46'28.54" N 118°12'44.10" W elev 11 ft

© 2006 Europa Technologies
Image © 2006 DigitalGlobe

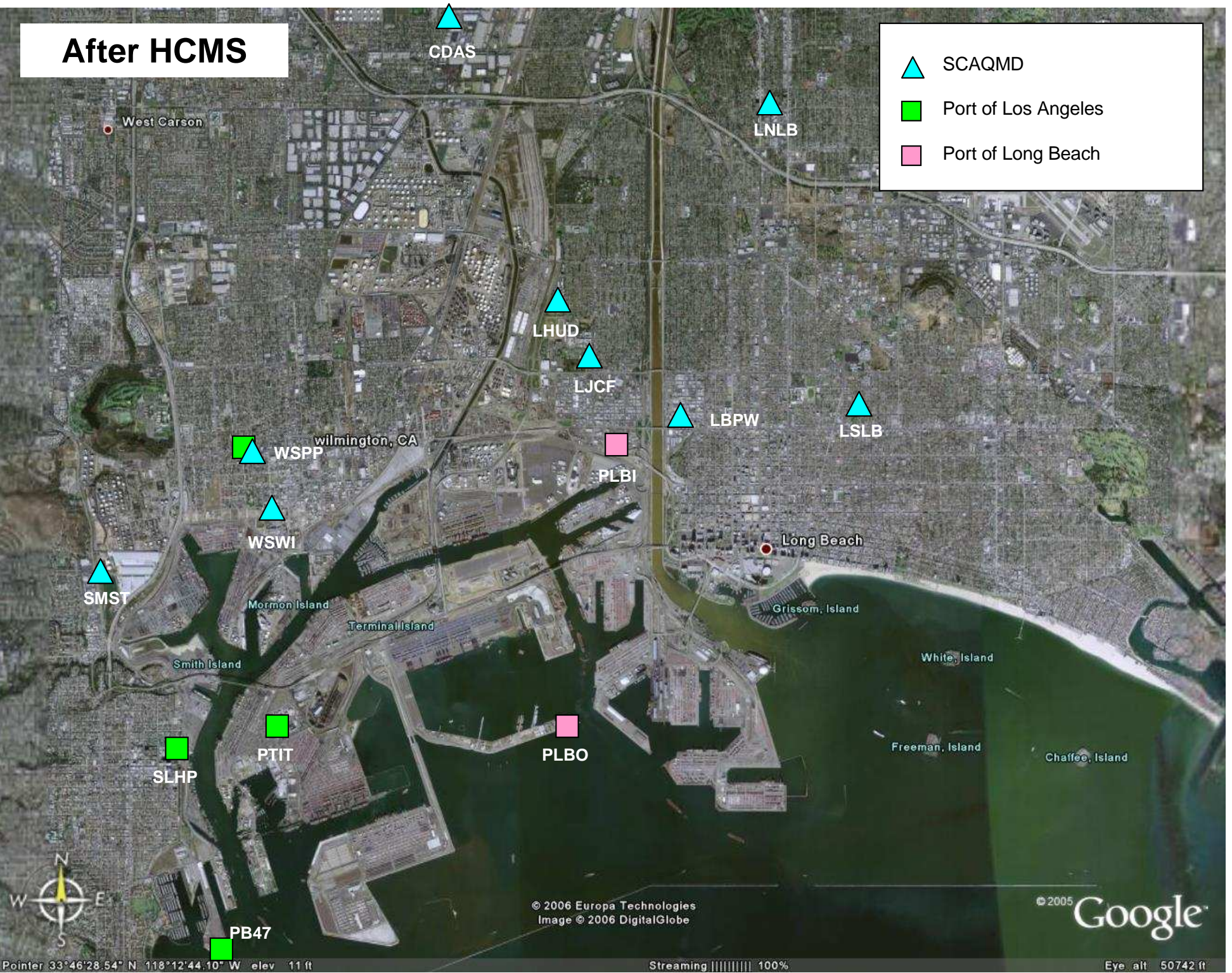
© 2005 Google

Streaming ||||| 100%

Eye alt 50742 ft

After HCMS

- ▲ SCAQMD
- Port of Los Angeles
- Port of Long Beach



Pointer 33°46'28.54" N 118°12'44.10" W elev 11 ft

Streaming ||||| 100%

Eye alt 50742 ft

Major Issues/Questions to be Addressed by the HCMS

❑ Measurement Methods Assessment

- Can lower-cost passive sampling characterize annual concentrations?

❑ Spatial & Temporal Characterization

- How do wind and pollution patterns vary seasonally & diurnally?
- Does the long-term monitoring network characterize pollution in the HC?
- Is air pollution greater in the HC than in other communities of SoCAB?

❑ Characterization of Pollution Sources

- Can the AQ measurements be deconstructed to characterize the relative contributions of regional, neighborhood, and local pollution sources?
- Were previous modeling assessments accurate in predicting the distribution of pollutants in the HC?

What's Next?

Tentative schedule:

- 1) August - finish data validation & analysis
- 2) October – populate database & publish papers
- 3) December - final reports & community briefing

HCMS Website:

<http://www.arb.ca.gov/research/mobile/hcm/hcm.htm>

