



CalEnviroScreen 3.0

A Tool for Evaluating
California Communities

Walker Wieland

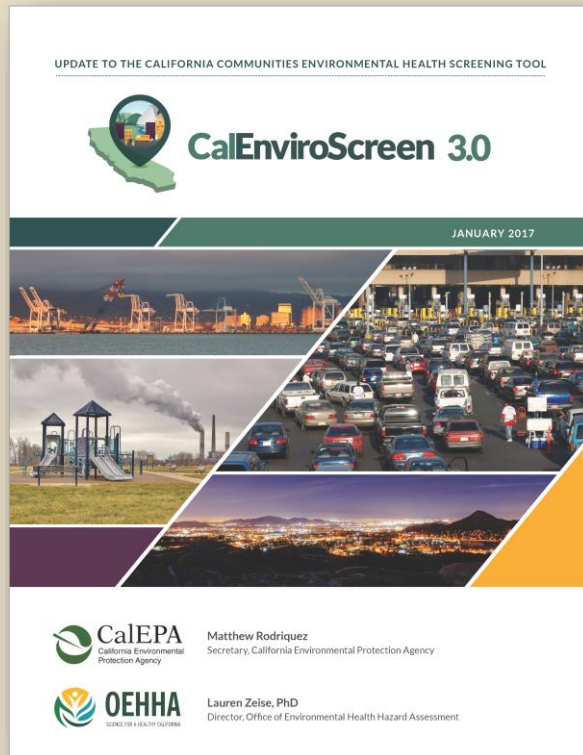
Office of Environmental Health Hazard Assessment

November 11th, 2017



CalEnviroScreen 3.0

Released January 2017



- Spatial analysis of relative burdens in California communities from pollution and population vulnerability.
- 20 indicators combined into a single ranked score.
- Census tract scale (~8,000).

Available at: <http://oehha.ca.gov/calenviroscreen/report/calenviroscreen-30>



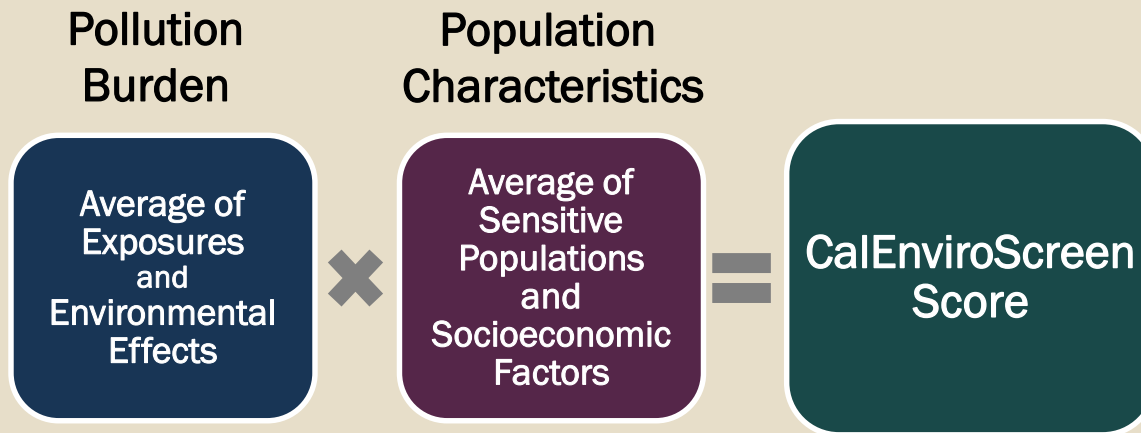


CalEnviroScreen 3.0

Indicators

Pollution Burden		Population Characteristics	
Exposures	Environmental Effects	Sensitive Populations	Socioeconomic Factors
Ozone PM2.5 Diesel Particulate Matter Drinking Water Contaminants Toxic Releases from Facilities Traffic Pesticide Use	Solid Waste Sites and Facilities Cleanup Sites Groundwater Threats Impaired Water Bodies Hazardous Waste Generators and Facilities	Asthma NEW Cardiovascular Disease Low Birth Weight Infants	Educational Attainment Housing Burden NEW Linguistic Isolation Poverty Unemployment

Calculating CalEnviroScreen Scores



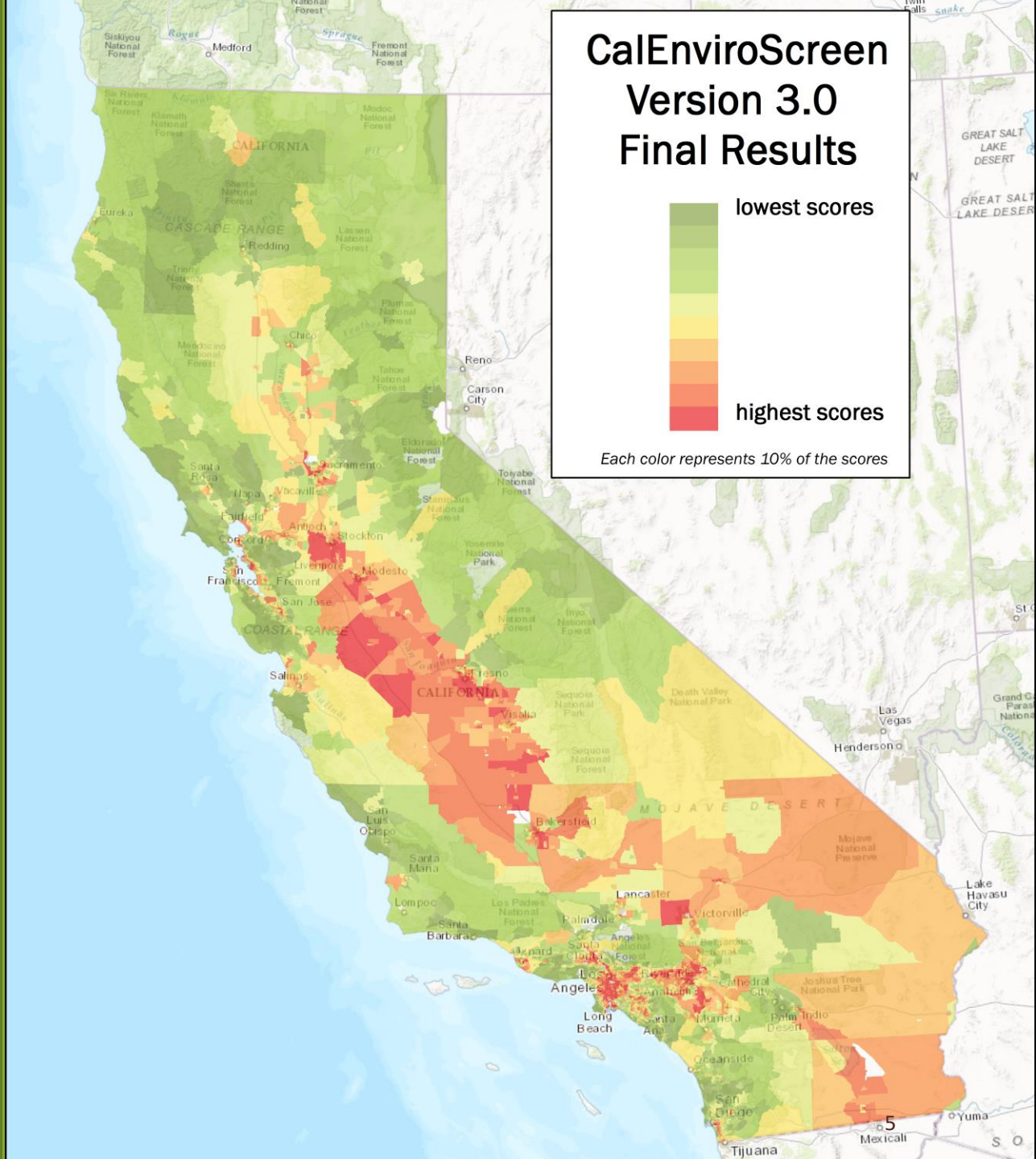
- CalEnviroScreen score is calculated by combining all indicator scores; allows for comparison of different areas
- Higher scores mean greater pollution burdens and population vulnerability.



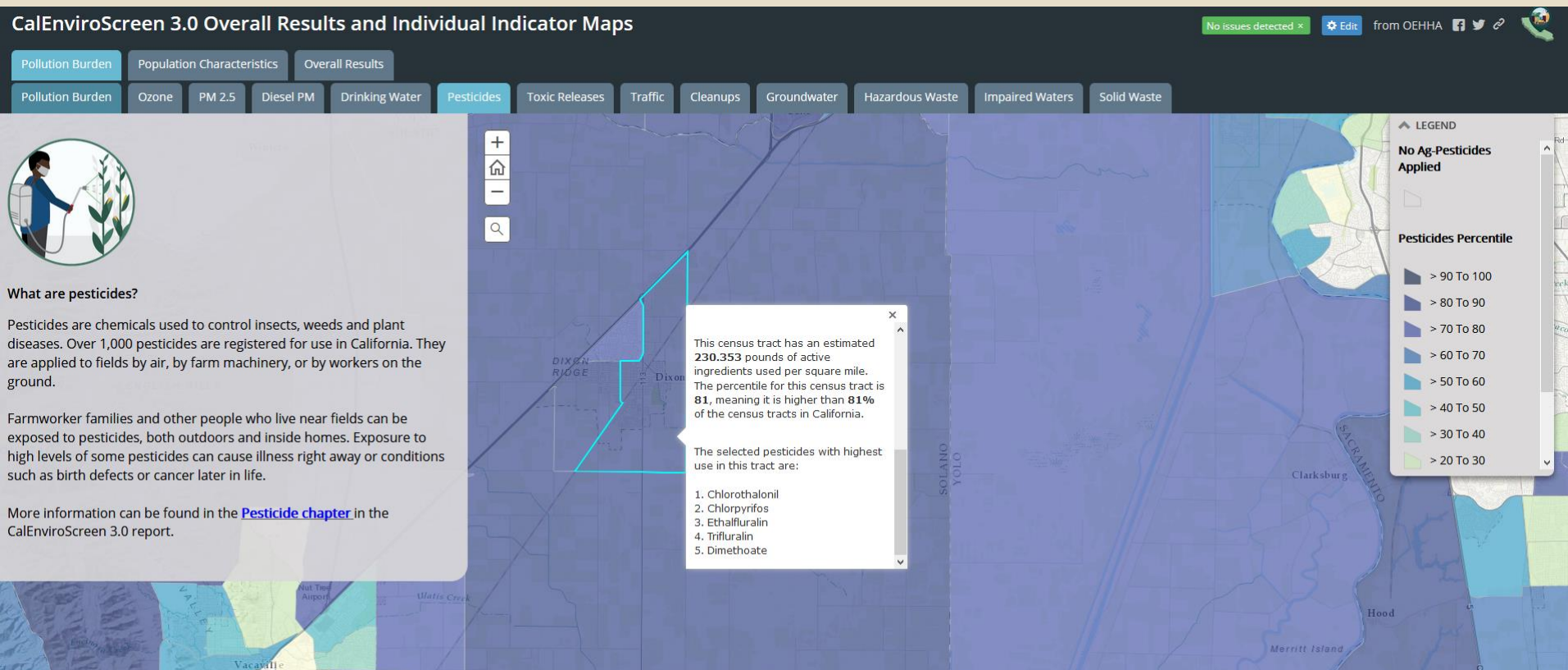


Results

Available as an
interactive web
map



Indicator Maps



Publicly Available Results

CalEnviroScreen Report

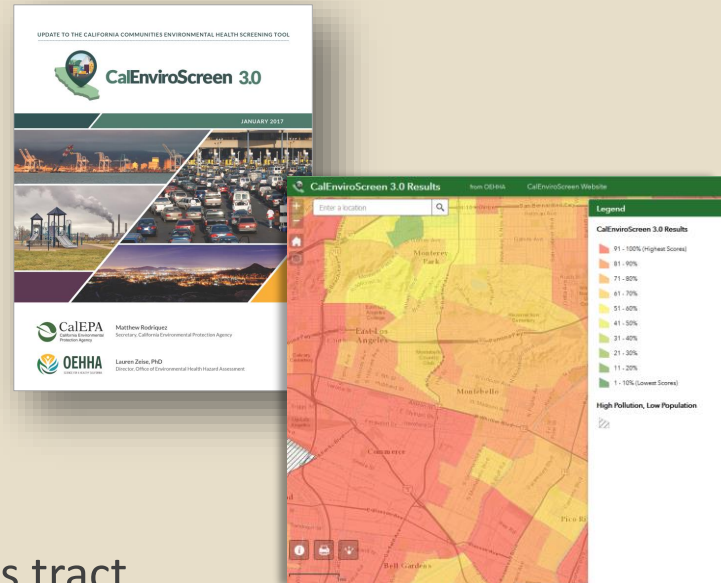
- Maps for individual indicators
- Description of each indicator

Mapping Tool

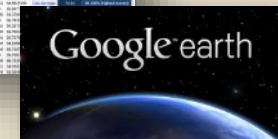
- Interactive web maps of results

Other Data

- Excel spreadsheet of results by census tract
- Google Earth file
- ArcGIS geodatabase



The image shows a screenshot of an Excel spreadsheet containing data for various census tracts. The columns include 'Census Tract', 'Score', 'Population', and 'High Pollution, Low Population'. The data is organized in a grid format, with each row representing a different census tract and its corresponding scores and population data.



www.oehha.ca.gov/calenviroscreen



Using CalEnviroScreen

Ongoing planning and decision-making within CalEPA

- EJ Small Grant Program
- EJ Compliance and Enforcement Working Group
- Trainings and outreach

Using CalEnviroScreen

SB 535 (de León, 2012) and updated
AB 1550 (Gomez, 2016)

Investment Plan Greenhouse Gas Reduction Fund

“CalEPA shall identify ‘disadvantaged communities’ for investment opportunities based on **geographic**, **socioeconomic**, **public health** and **environmental hazard** criteria.”

>25%

Projects located in disadvantaged communities

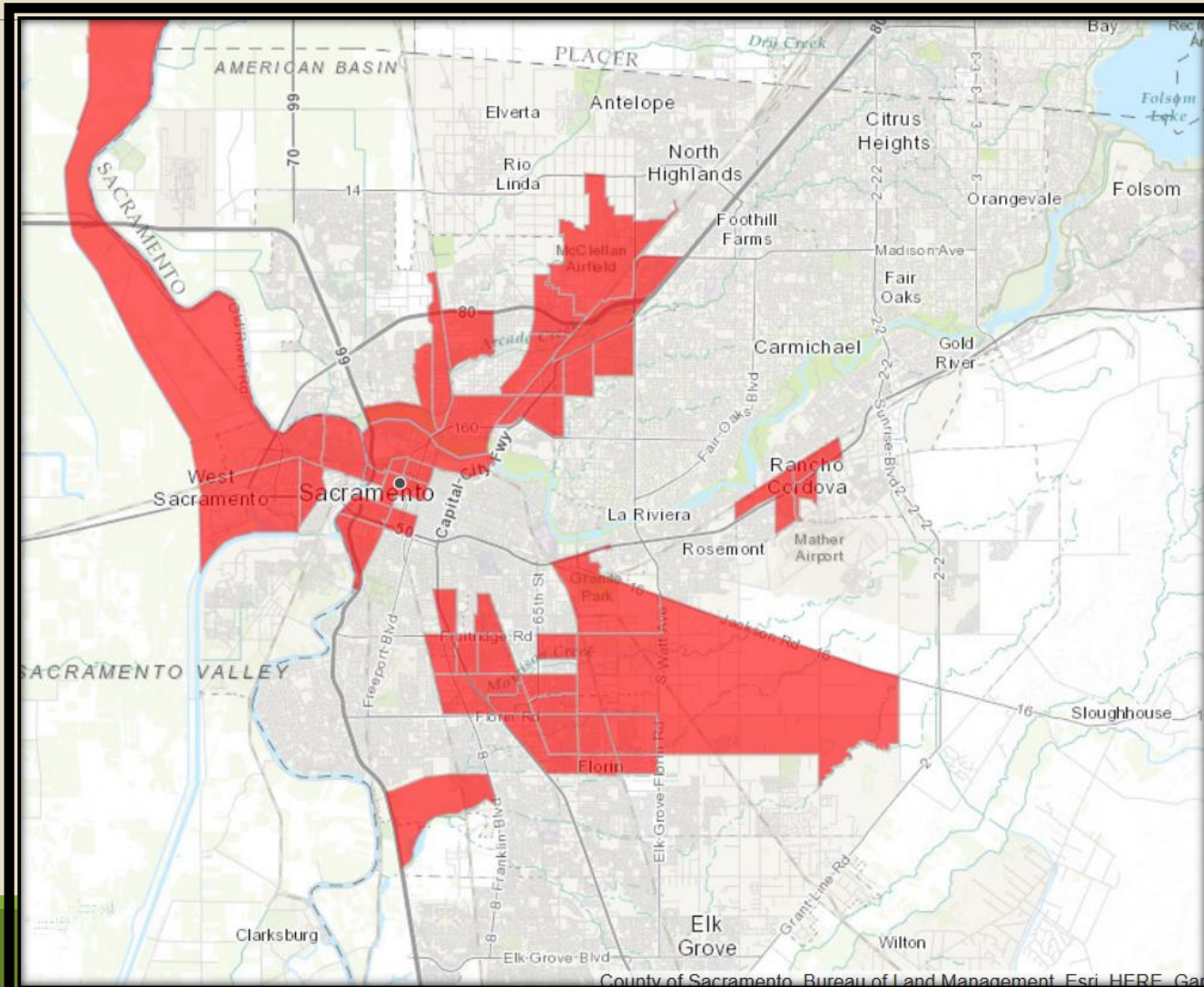
>5%

Projects within ½ mile of a disadvantaged community

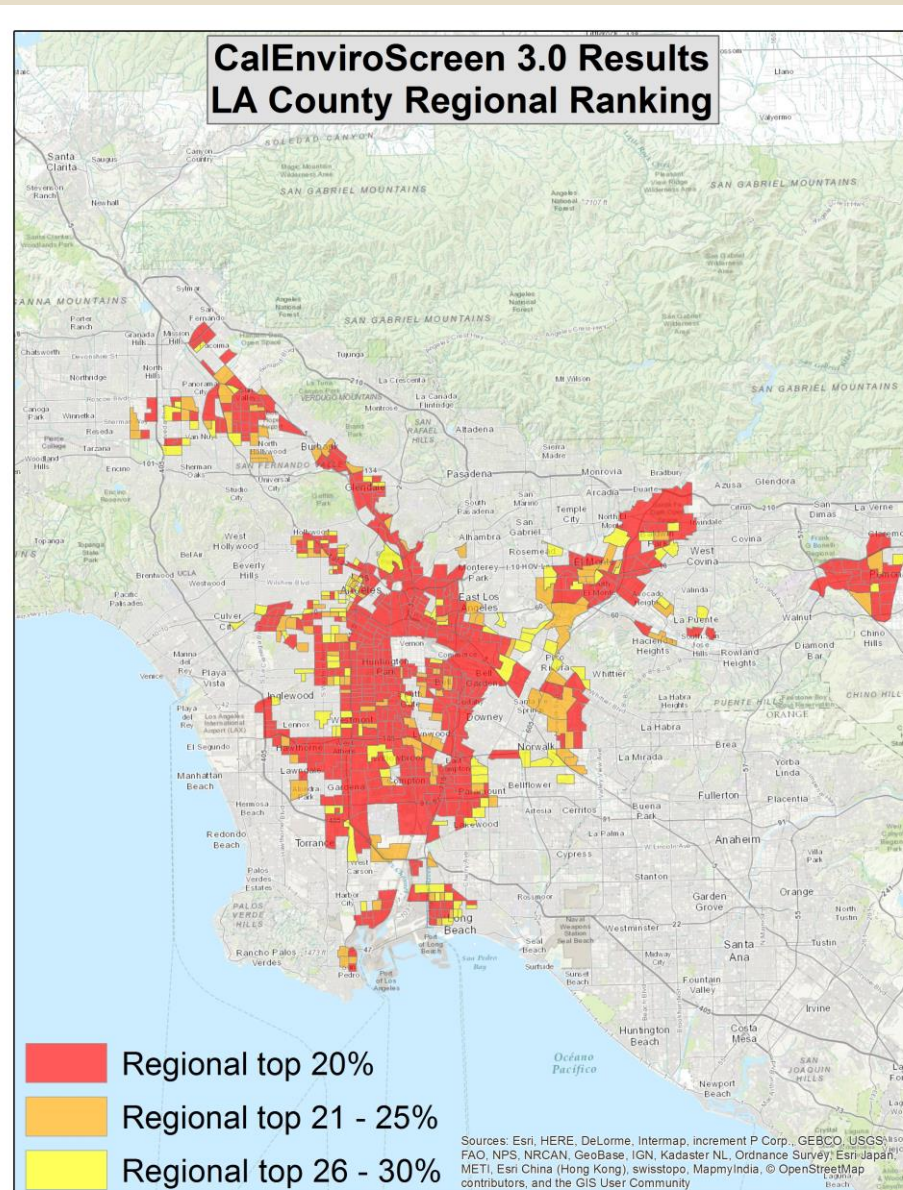
>5%

Projects within low-income areas

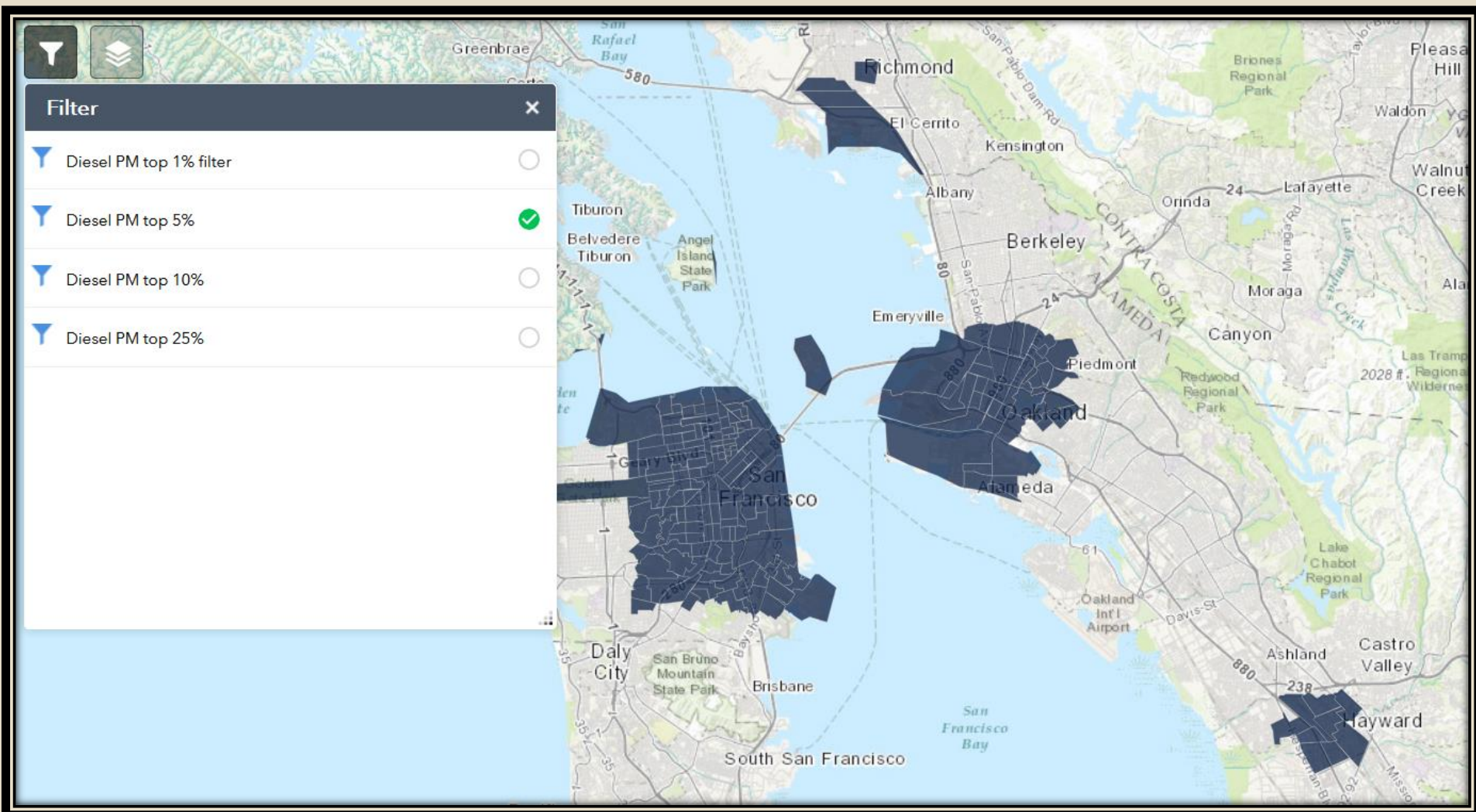
SB 535 Disadvantaged Communities in Sacramento Area



Other approaches – Regional Ranking



Other approaches – Custom Cutoff



Other approaches – Subset of Indicators

