



YOLO-SOLANO
AIR QUALITY MANAGEMENT DISTRICT

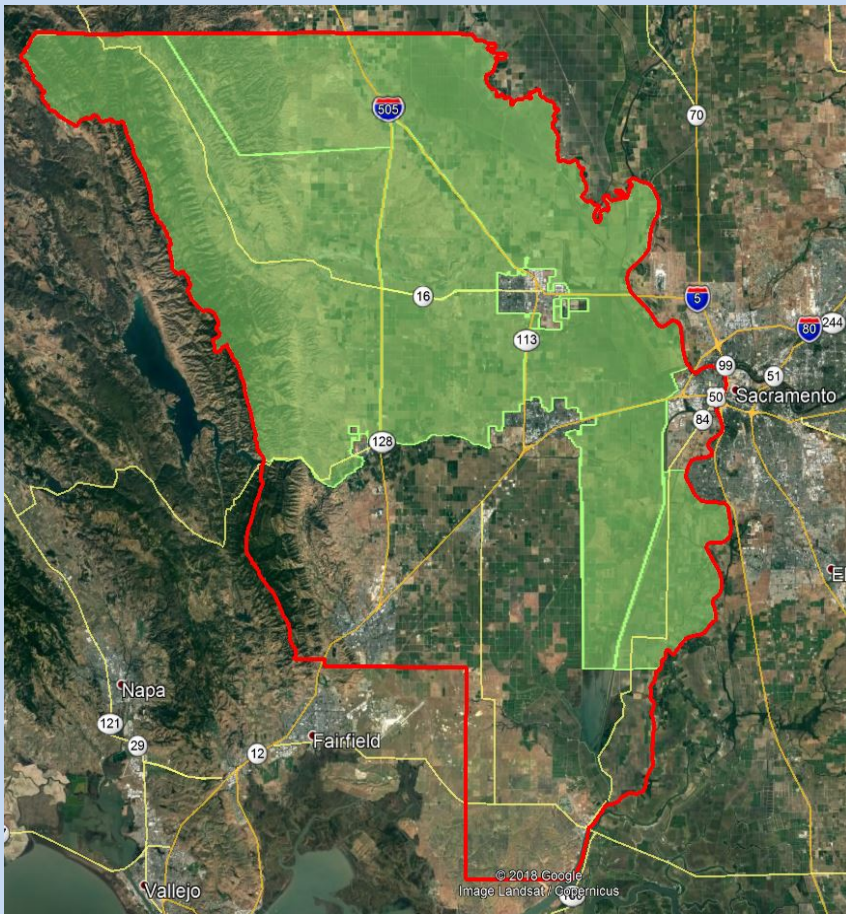
Enforcement Symposium
October 4, 2019

Cannabis Industry

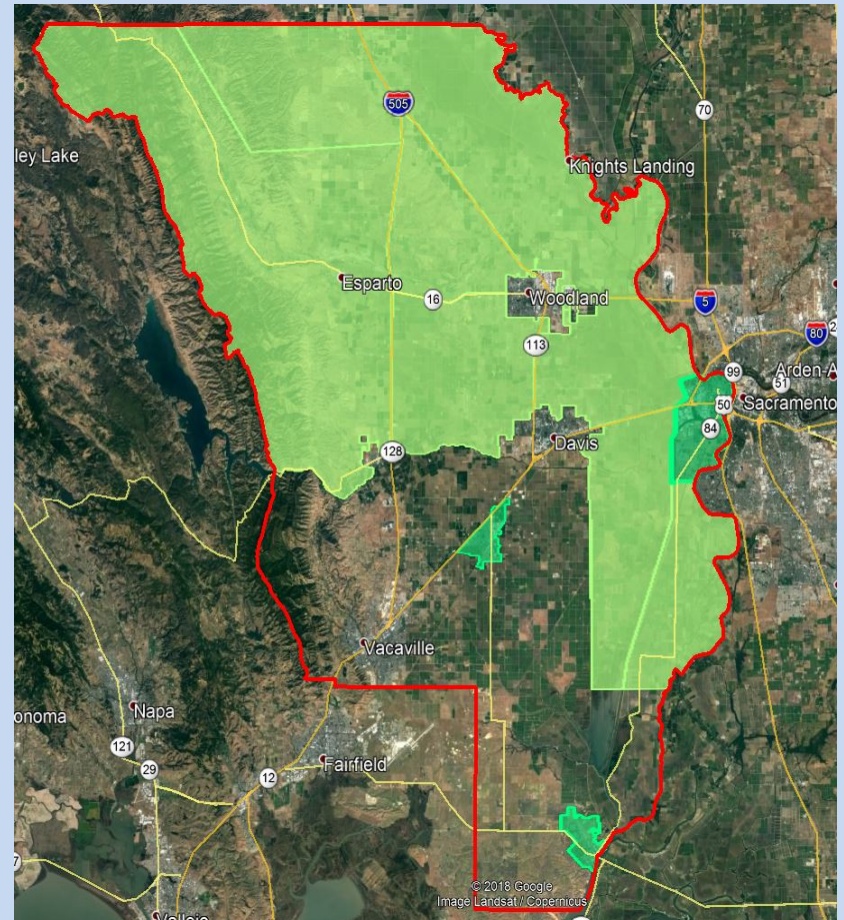


Allowed Cultivation

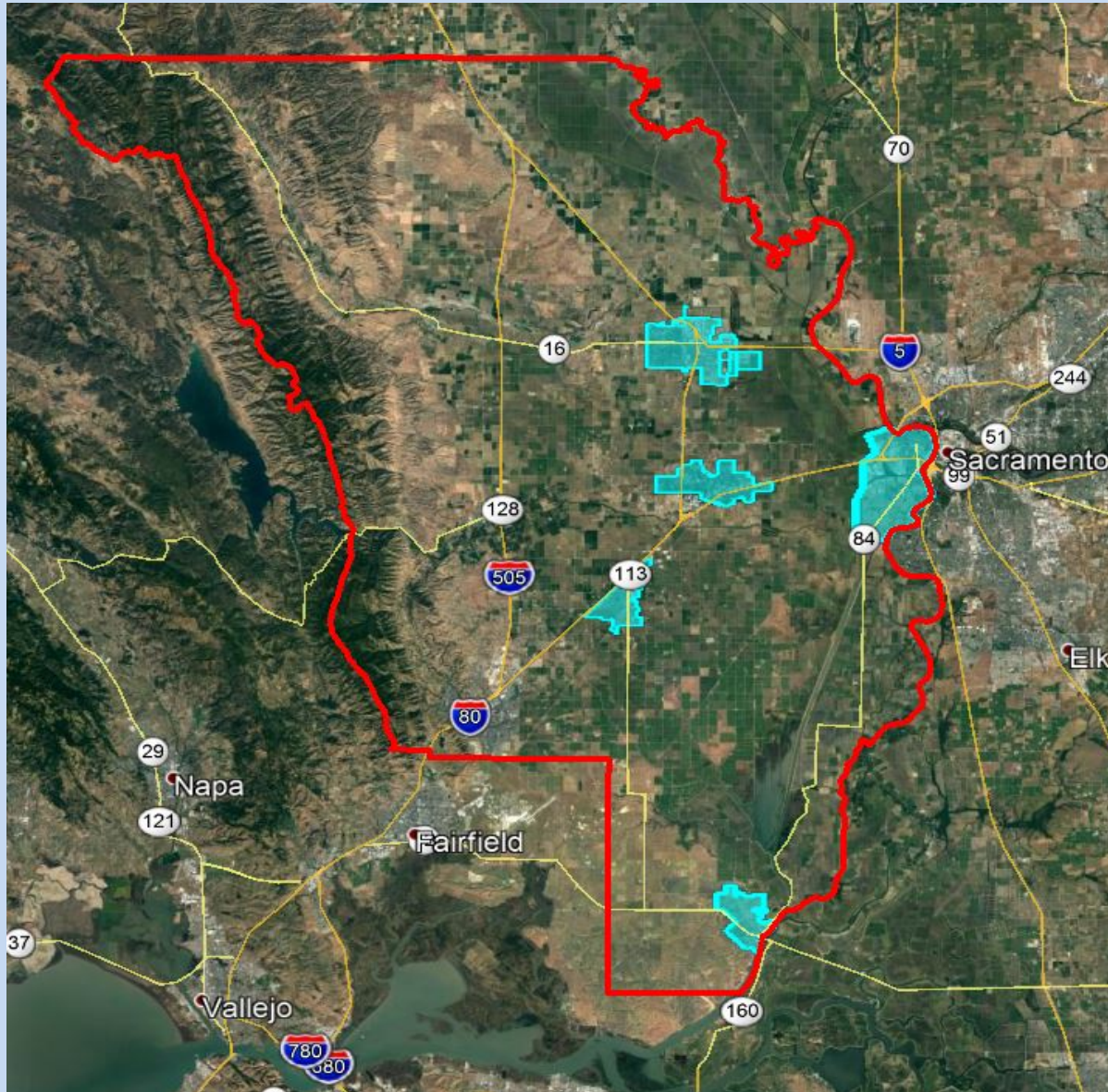
Outdoor



Indoor



Commercial Manufacturing and Testing



Permitting

- Identifying Cannabis Stationary Sources
 - Building and Planning Departments
 - Surveillance
 - Interagency Working Groups
- District Outreach and Follow-Up
 - Circle Back Periodically
- Currently three permitted manufacturing facilities
 - (2) Propane/Butane Extraction
 - (1) CO₂ Extraction w/ Ethanol Filtration & Vacuum Distillation
 - Solvent Cleaning

Extractors

Emotek OBE



ETS MiniMEP



Eden Labs HiFlo



Permitting Issues

- Application detail, or lack thereof
- District unfamiliarity with the process
- Changes discovered during start-up inspections
 - Additional equipment/processes
 - Solvent Cleaning
- Confidentiality Concerns
 - No Photos
- Recordkeeping

Cultivation

- Exempt from District Permitting Requirements
- Engines may need District Registration
- Odor – Local Planning agency – CUP
- Agricultural Burning

Previous non-Cannabis crop residue

NO BURNING CANNABIS WASTE

Lessons Learned

- Work with the planning agencies
- Contact possible sources and explain requirements
- Conduct surveillance inspections
- Circle back
- Ask questions and try to understand the process
- Discuss emissions and recordkeeping early in the permitting process

Questions

Jeff Pinnow

Compliance Manager

jpinnow@ysaqmd.org

530-757-3662

Ben Beattie

Engineering Manager

bbeattie@ysaqmd.org

530-757-3667

Paul Hensleigh

Deputy APCO

phensleigh@ysaqmd.org

530-757-3665



YOLO-SOLANO

AIR QUALITY MANAGEMENT DISTRICT