

Assembly Bill (AB) 617: Community Emissions Reduction Plans



YEAR 1 COMMUNITIES

Key elements of AB 617



Community Air
Monitoring and
Emission
Reduction
Plans



Clean
Technology
Investments



Best Available
Retrofit Control
Technology
(BARCT) Rules



Easier Access
to Emissions
Data

Key Milestones

Oct 2018

- Deadline for CARB to set statewide strategy (select Year 1 communities, guidelines, and benchmarks)

July 2019

- Deadline for South Coast AQMD to deploy air monitoring for Year 1 communities

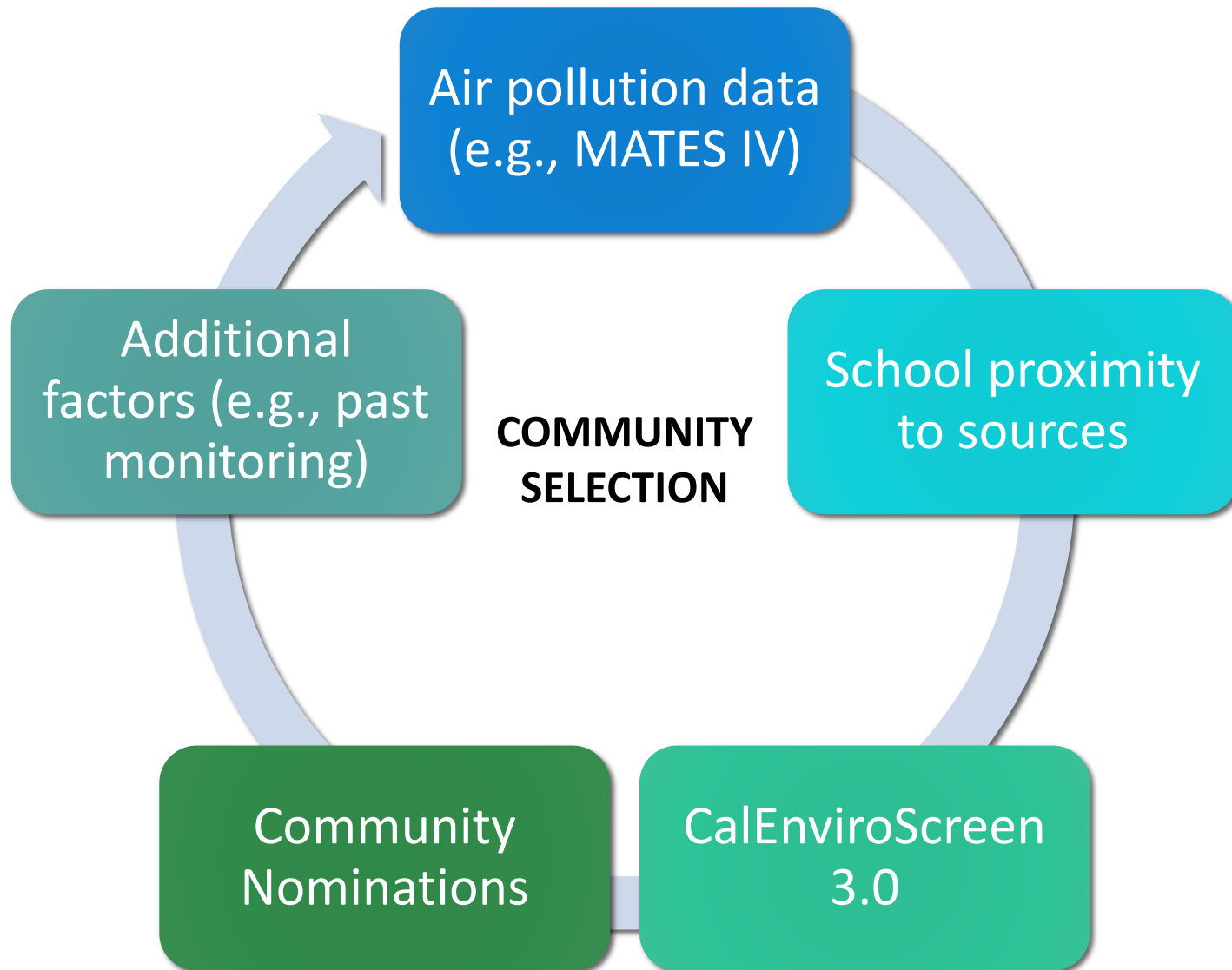
Oct 2019

- Deadline for South Coast AQMD to adopt CERPs for Year 1 communities

Dec 2023

- December 31 – Deadline for South Coast AQMD to implement Best Available Retrofit Control Technology (BARCT)

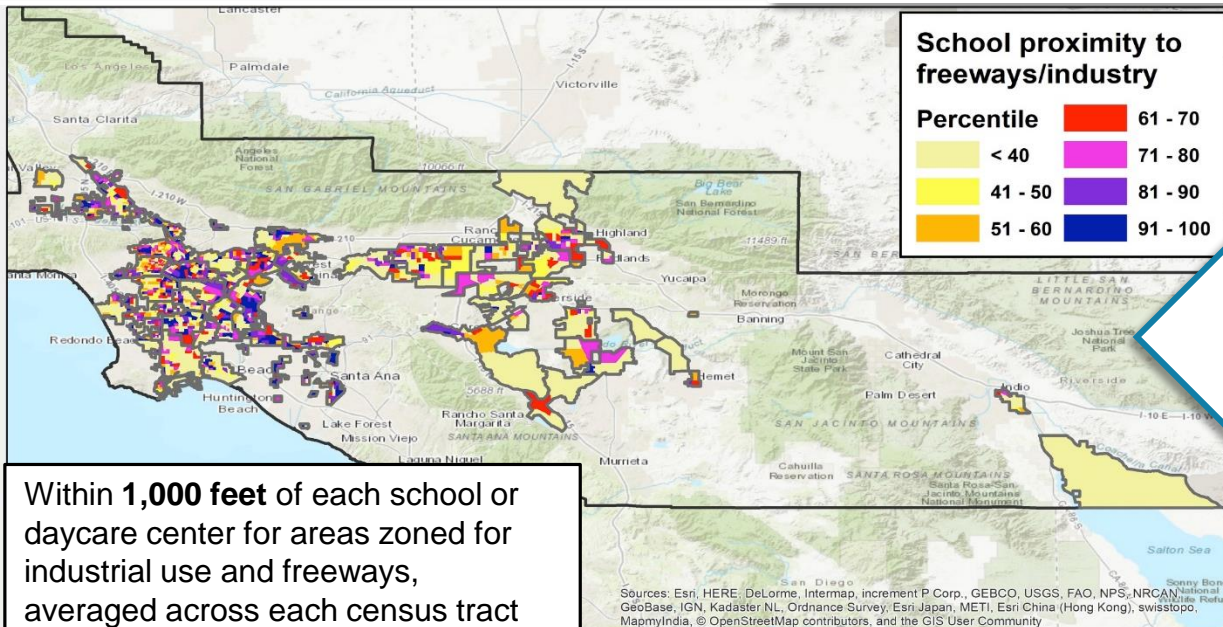
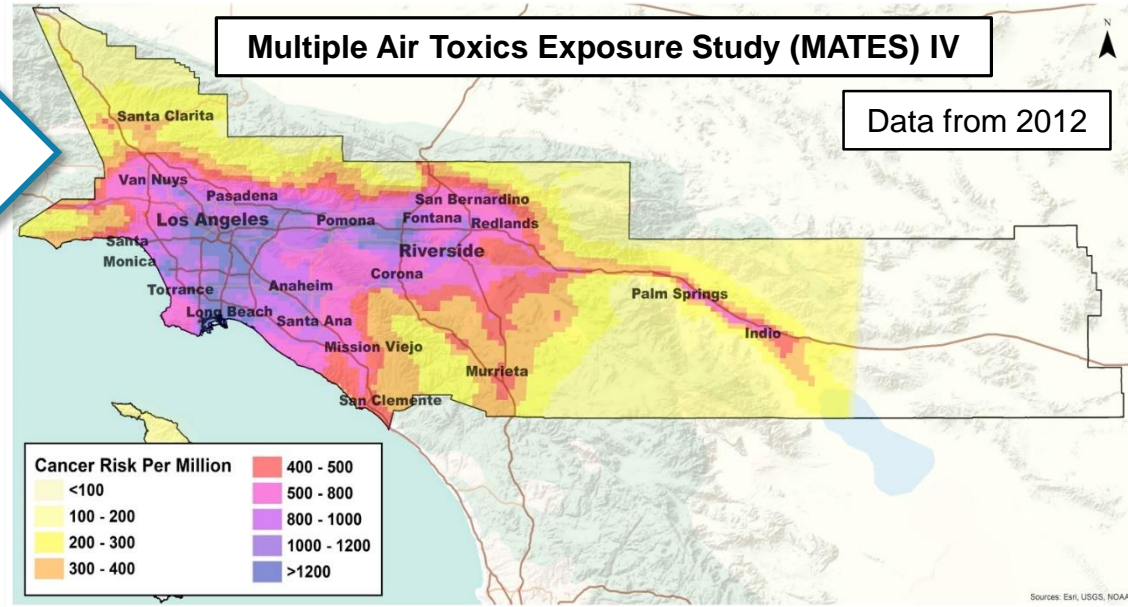
Community Selection - Considerations



Community Selection

Air pollution data (e.g., MATES IV)

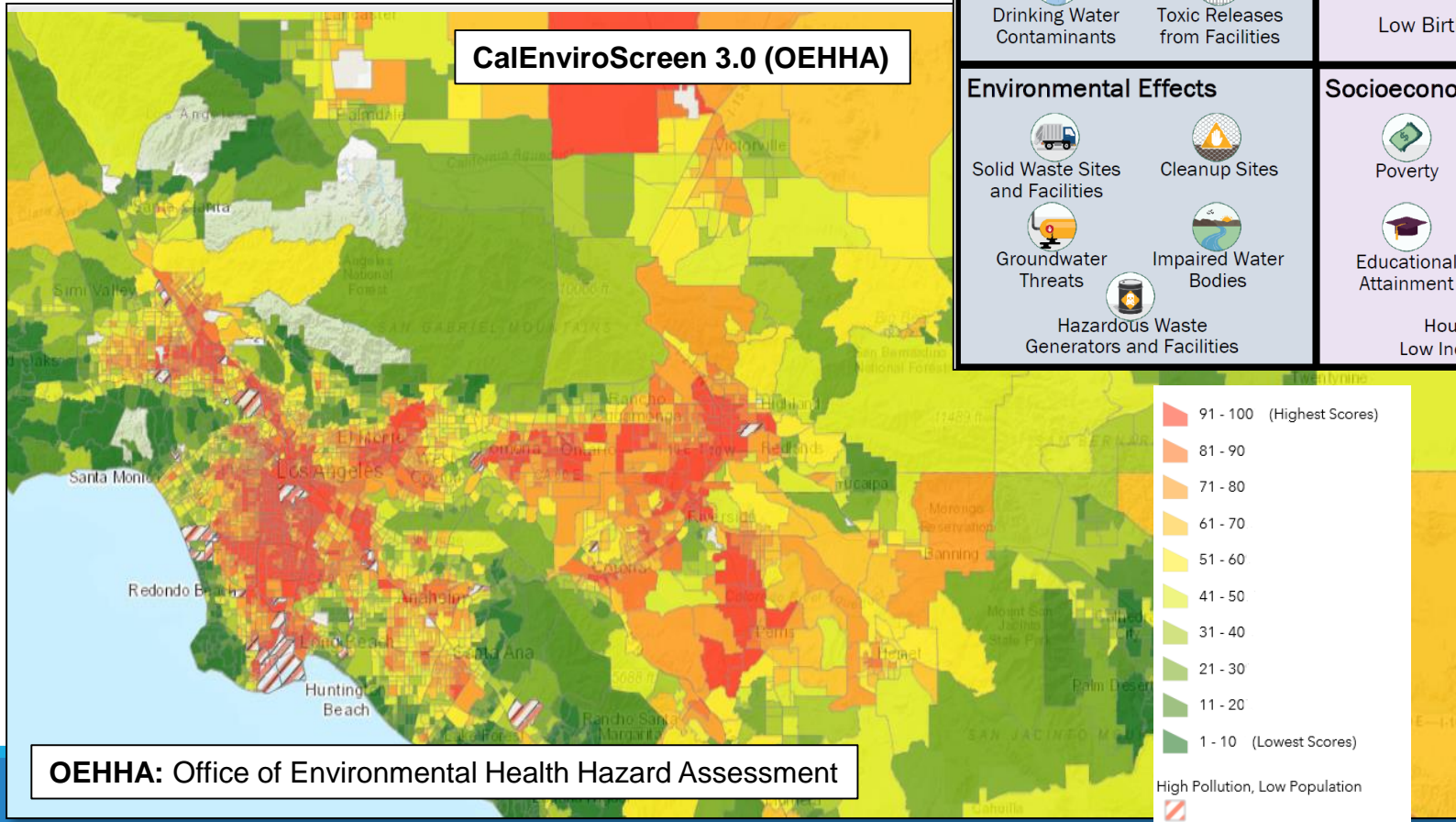
- Regional air toxics study
- Air toxics cancer risk
- Diesel particulate matter accounts for 2/3 of risk
- Multiple pollution sources



School proximity to sources

Community Selection (continued)

CalEnviroScreen 3.0



Pollution Burden	Population Characteristics
Exposures Ozone PM2.5 Diesel PM Pesticide Use Traffic Drinking Water Contaminants Toxic Releases from Facilities	Sensitive Populations Asthma Cardiovascular Disease Low Birth-Weight Infants
Environmental Effects Solid Waste Sites and Facilities Cleanup Sites Groundwater Threats Impaired Water Bodies Hazardous Waste Generators and Facilities	Socioeconomic Factors Poverty Unemployment Educational Attainment Linguistic Isolation Housing Burdened Low Income Households

Community Selection (continued)

Additional factors for consideration



Community
Nominations



Past or
current air
monitoring
study
findings

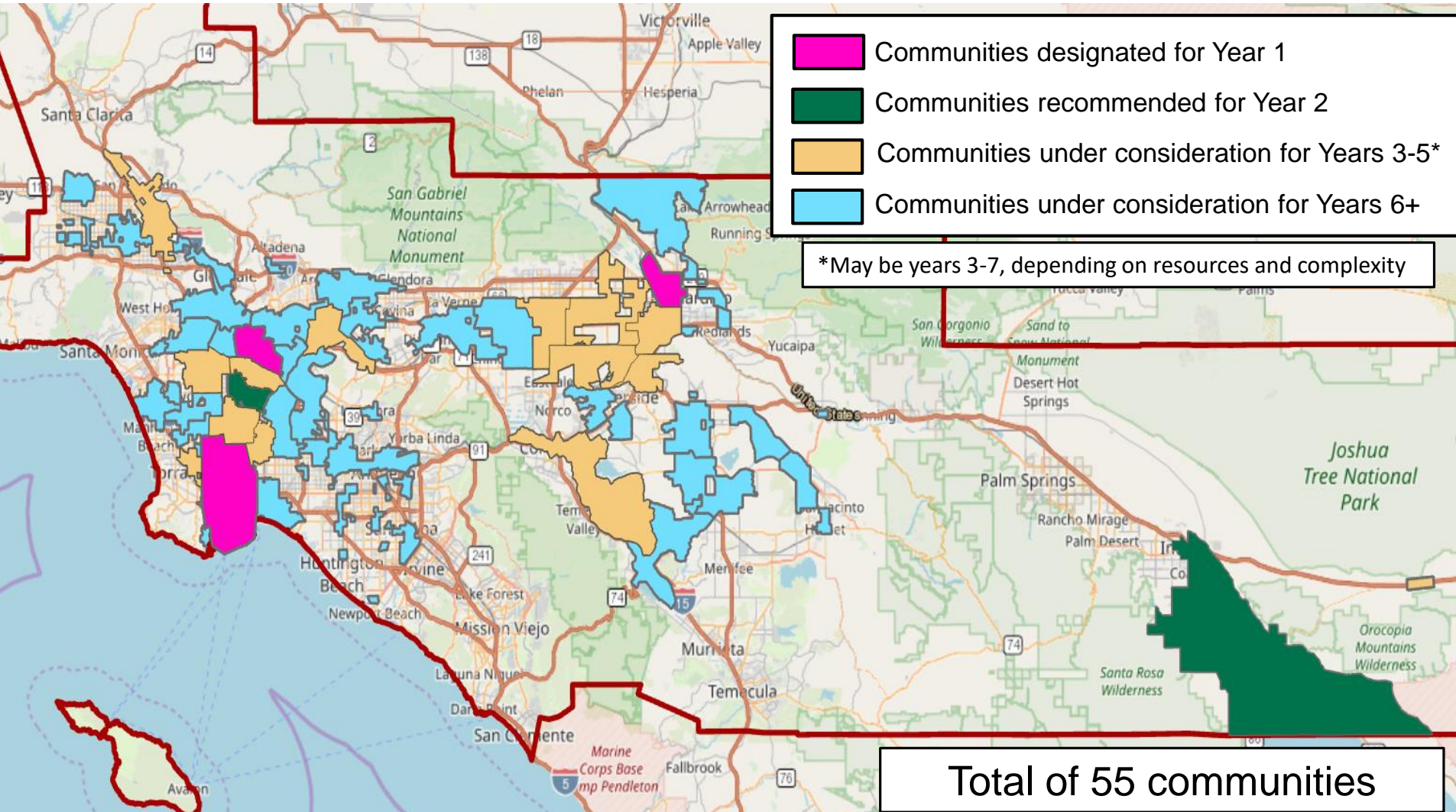


Past or
current
community
plans or
programs



Community
support,
experience
and
willingness to
collaborate
with diverse
stakeholders

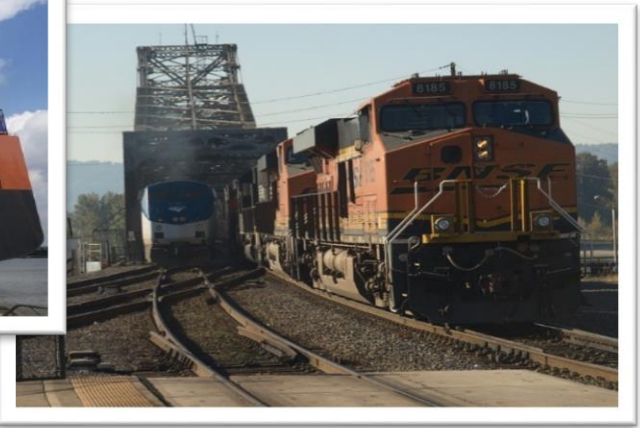
Designated & Potential Future Communities



AB 617 Year 1 Communities

September 2018, CARB designated three Year 1 Communities:

- Wilmington, Carson, West Long Beach
- San Bernardino, Muscoy
- Boyle Heights, East Los Angeles, West Commerce



Community Steering Committees (CSCs)

- CSCs were formed for each of the three communities
- Discussed the community boundary
- Identify and prioritize air pollution concerns
- Guided strategies and provide input for CERPs

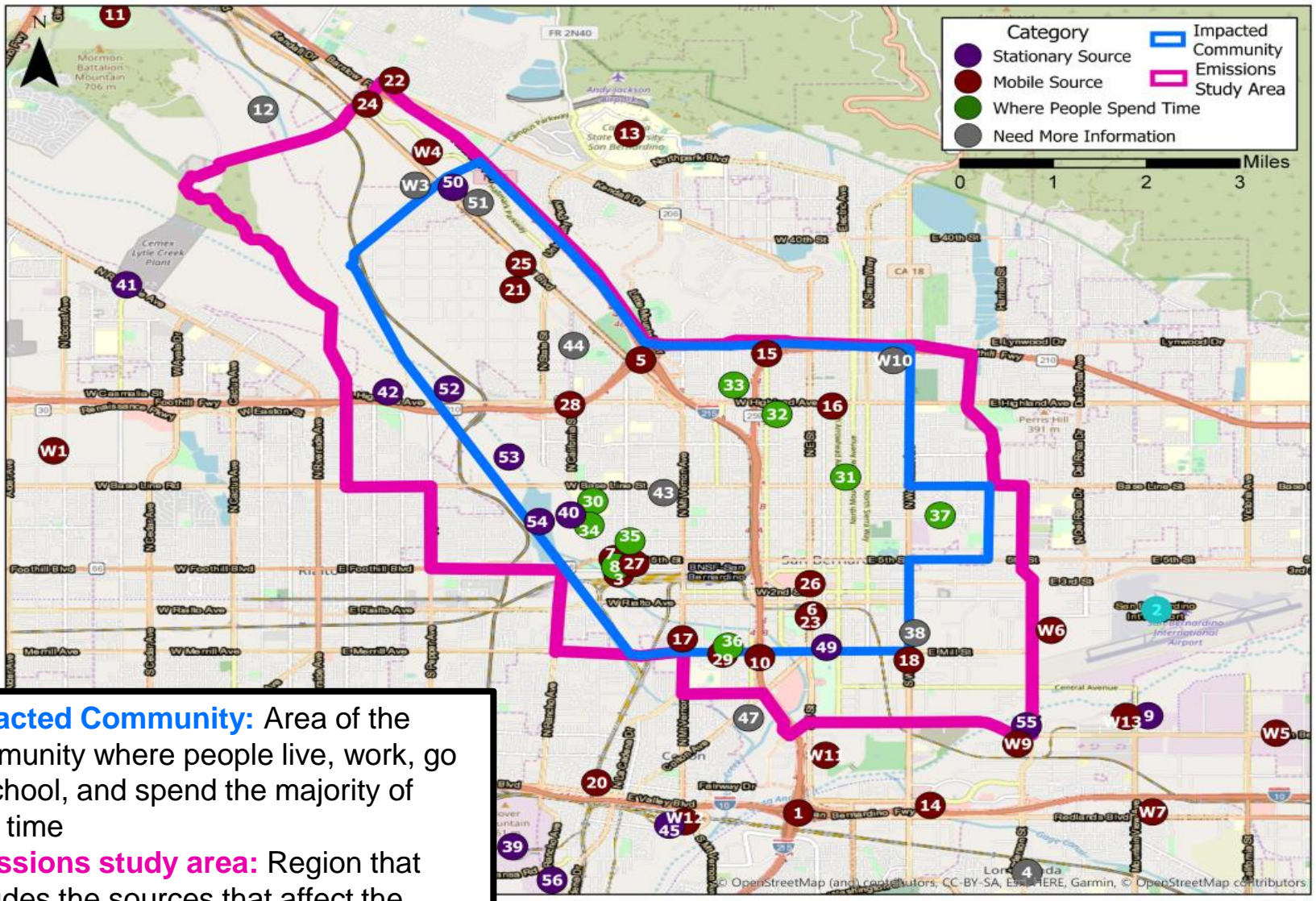
Members include:

- Active residents and community leaders
- Local business owners or workers, labor unions
- Community organizations
- Local agencies
- Schools
- Hospitals
- Elected officials

Land use agencies represented:



Community Boundary - Example



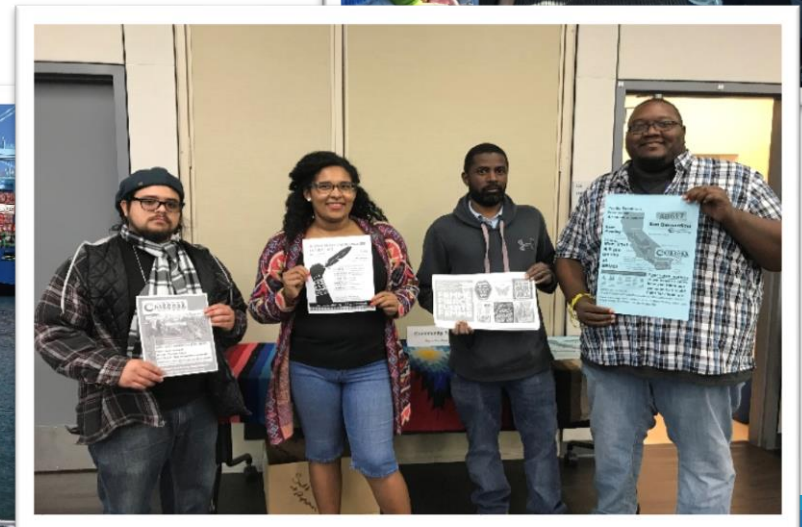
Impacted Community: Area of the community where people live, work, go to school, and spend the majority of their time

Emissions study area: Region that includes the sources that affect the Impacted Community

Community Outreach

Extensive Community Outreach:

- 3 Community Steering Committees (CSCs)
- 27 CSC meetings
- 60+ individual meetings
- 2 community bus tours
- 3 Technical Advisory Group meetings
- 6 community workshops



Air Quality Priorities

Wilmington, Carson, West Long Beach Community



Ports



Neighborhood Truck Traffic



Railyards



Refineries



Oil Drilling and Production



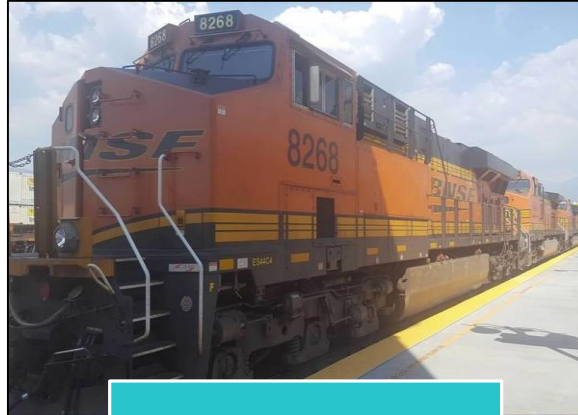
Schools, Childcare Centers, Homes

Air Quality Priorities

San Bernardino, Muscoy Community



Nighborhood Truck Traffic



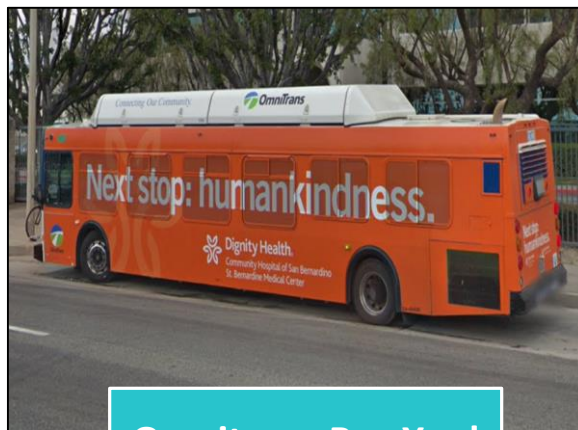
Railyards



Warehouse
On-Site Emissions



Concrete Batch Plants



Omnitrans Bus Yard



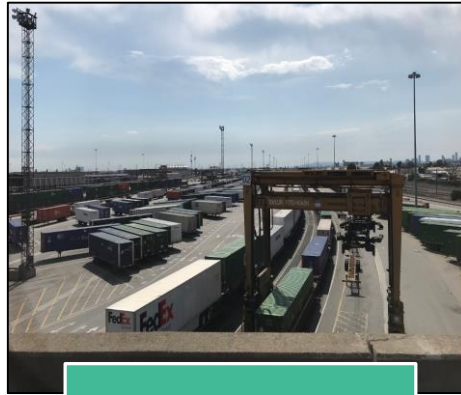
Schools, Childcare Centers,
Community Centers,
and Homes

Air Quality Priorities

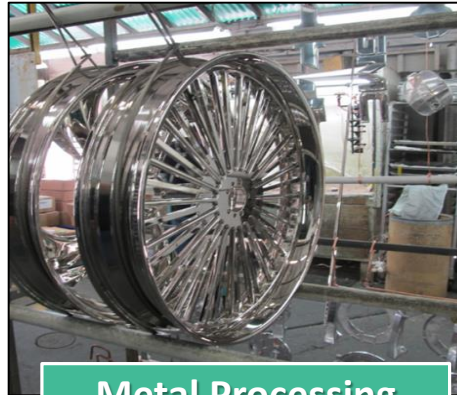
East Los Angeles, Boyle Heights, West Commerce Community



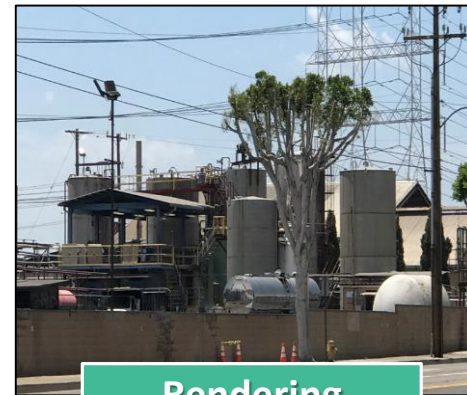
Neighborhood and Freeway Truck and Automobile Traffic



Railyards



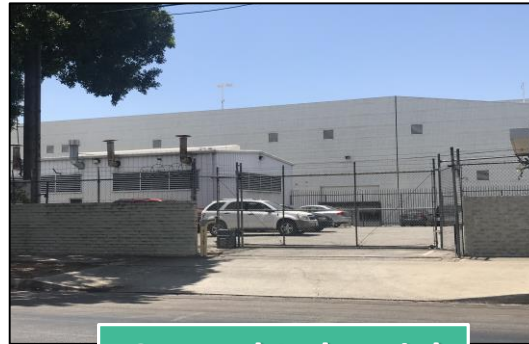
Metal Processing Facilities



Rendering Facilities



Auto Body Shops



General Industrial Facilities, etc.



Schools, Childcare Centers, Community Centers, Libraries and Public Housing Projects

CERP Development

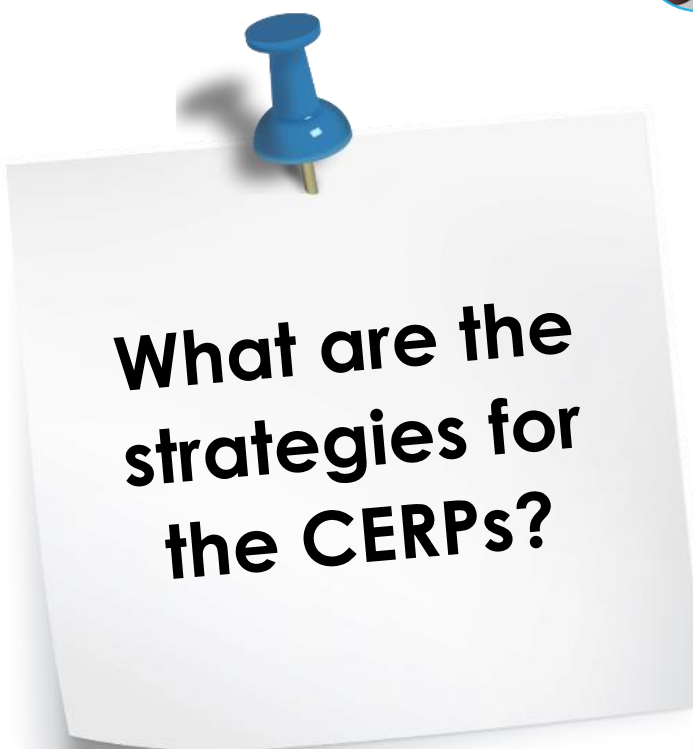
Community-Driven Efforts to Develop the CERPs

- 49 actions (approx. 160 steps) across the 3 CERPs*
- 28 are emission reduction actions
- Each action includes:
 - Suite of strategies
 - Steps
 - Timeline/milestones
 - Metrics to track progress
 - Collaborating entities



*Plans are flexible to adapt to new information

CERP Strategies



What are the strategies for the CERPs?



Examples of Actions to Reduce Mobile Source Emissions



Ports

- Oil tanker VOC leak surveillance
- Incentives for cleaner ships and harbor craft
- Rule development/Memorandum of Understanding (MOU): Ports MOU, Rule 1142, CARB At-Berth, CARB Commercial Harbor Craft



Neighborhood Truck Traffic

- Truck idling sweeps & inspections
- Incentives & outreach for cleaner heavy-duty trucks (e.g., Automated License Plate Reader (ALPR) systems)
- Outreach for reporting idling trucks
- Work with cities on truck routes & enforcement
- Regulations: CARB Advanced Clean Truck, Heavy-Duty Low NOx, Heavy-Duty Vehicle Inspection & Maintenance



Railyards

- Work with CARB to develop new requirements to reduce railyard emissions
- Incentives for cleaner equipment or infrastructure
- Rule development: Railyard Indirect Source Rule (ISR)



Examples of local entities:



CSC members

Examples of Actions to Reduce Stationary Source Emissions (continued)



Rendering Facilities

- Mobile air measurements, follow-up inspections
- Community training on air quality complaints



Auto Body Shops

- Small Business Assistance Program outreach
- Work with fire departments to inspect auto body shops
- Mobile air measurements, follow-up inspections



Concrete Batch Plants

- Air monitoring and follow-up
- Outreach to operators
- Enforcement actions as needed



Examples of Actions to Reduce Stationary Source Emissions

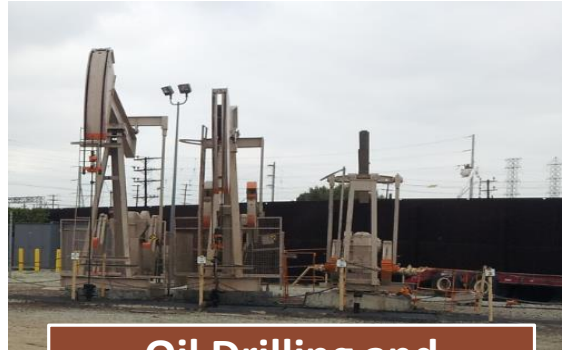


Refineries

- Mobile measurements to screen all refineries
- VOC leak detection & repair
- Refinery flaring notifications
- Rule development: Rules 1118, 1178, and 1109.1

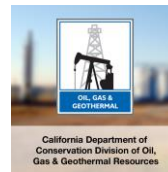


Refineries



Oil Drilling and Production

- Mobile measurements to screen all wells, collaborate with organizations
- Leak detection and repair
- Oil well notifications
- Rule development: Rule 1148 series (3 rules) and Rule 1173



Community Based Organizations



Metal Processing Facilities

- Mobile air measurements, follow-up inspections
- Outreach and training for local business owners



Example of Actions for Exposure Reduction



Schools, Childcare Centers, Community Centers, Libraries and Public Housing Projects

Public Outreach and Community Organization Collaboration

- Asthma management programs
- School-based programs
- Improve health messaging and conduct outreach

Reduce exposure to air pollutants

- Air filtration systems



Examples of community based organizations:

AltaMed

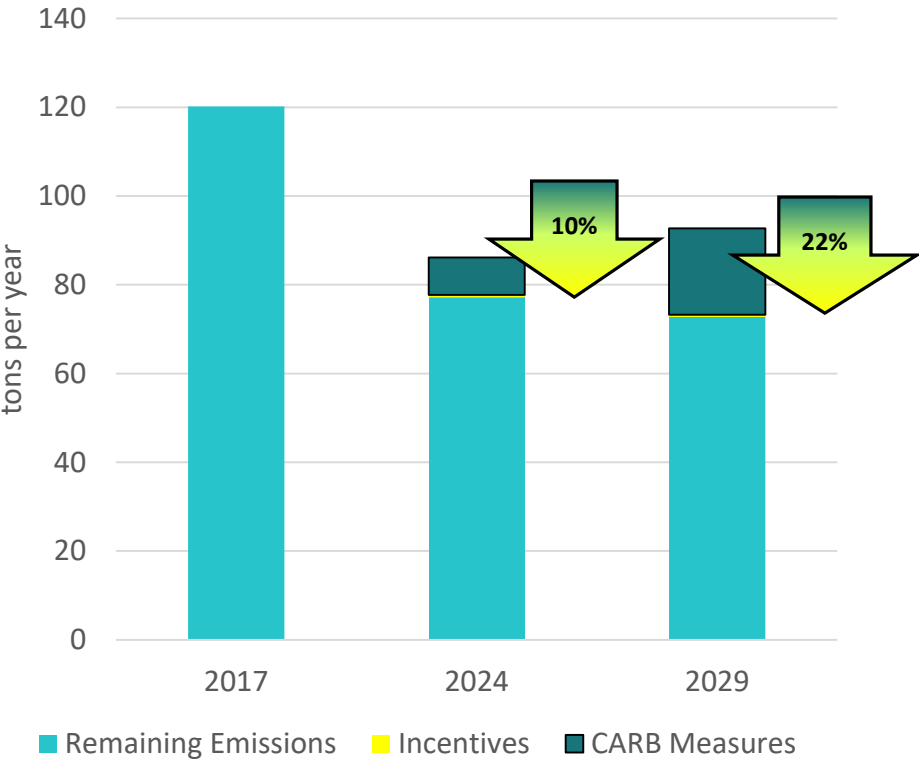


Emissions Reduction Targets

Wilmington, Carson, West Long Beach Community

SOUTH COAST AQMD AND CARB ACTIONS

CERP Diesel Particulate Matter (DPM) Reductions in 2024 and 2029:



Emissions ^a	NOx	SOx	VOC	DPM
2017 Emissions (tpy)	10,614	1,437	5,641	120
Projected 2024 Emissions Baseline (tpy)	8,819	1,659	5,306	86
Emission Reductions from CERP, by 2024 (tpy)	606	--	20.6	9
Emission Reductions from CERP, by 2024 ^b (%)	7	--	<1	10
Projected 2029 Emissions Baseline (tpy)	9,250	1,715	5,256	93
Emission Reductions from CERP, by 2030 (tpy)	3,207 ^c	11	64	20
Emission Reductions from CERP, by 2030 ^c (%)	35% ^d	<1%	<1%	22%

^aPer CARB guidance, the emissions baseline was estimated for 2017, and milestone years 2024 and 2029. However, the emission reductions in this table target a 2030 completion date. While the baseline emissions were not calculated for 2030, staff expects the emissions to be similar to the 2029 estimates.

^bPercent calculated based on 2024 emissions baseline

^cBased on maximum NOx emission reductions that may be achieved from the adoption of Rule 1109.1 – Refinery Equipment

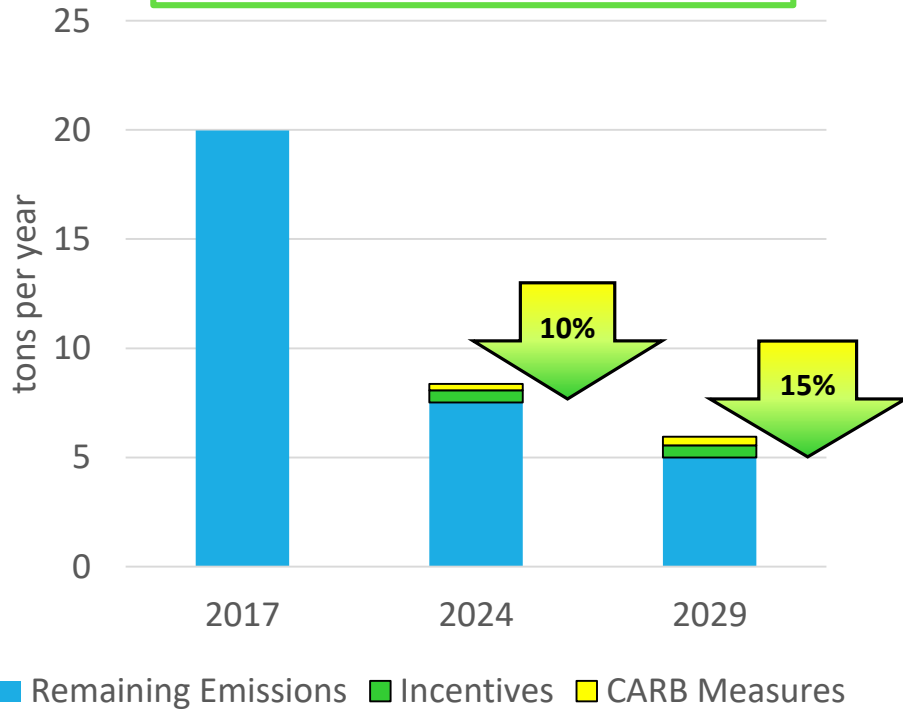
^dPercent calculated based on 2029 emissions baseline

Emissions Reduction Targets

San Bernardino, Muscoy Community

SOUTH COAST AQMD AND CARB ACTIONS

**CERP Diesel Particulate Matter (DPM)
Reductions in 2024 and 2029:**



Emissions ^a	NOx	DPM
2017 Emissions (tpy)	1140	19.97
Projected 2024 Emissions Baseline (tpy)	726	8.37
Emission Reductions from CERP, by 2024 (tpy)	75.1	0.86
Emission Reductions from CERP, by 2024 ^b (%)	10	10
Projected 2029 Emissions Baseline (tpy)	602	5.95
Emission Reductions from CERP, by 2029 (tpy)	127.9	0.91
Emission Reductions from CERP, by 2029 ^c (%)	21	15

^aPer CARB guidance, the emissions baseline was estimated for 2017, and milestone years 2024 and 2029

^bPercent calculated based on 2024 emissions baseline

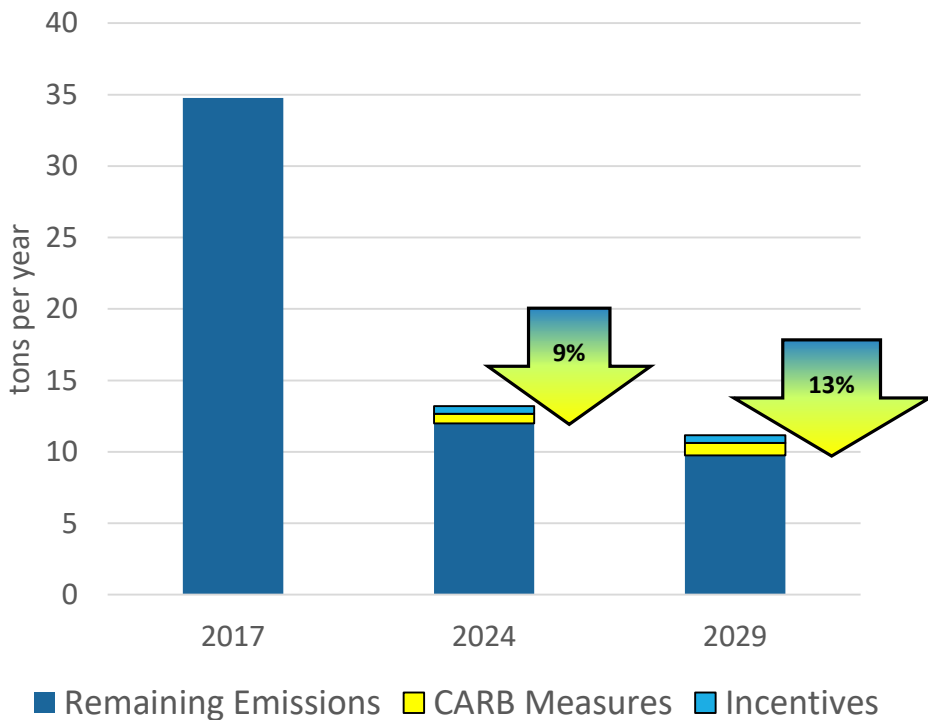
^cPercent calculated based on 2029 emissions baseline

Emissions Reduction Targets

East Los Angeles, Boyle Heights, West Commerce Community

SOUTH COAST AQMD AND CARB ACTIONS

**CERP Diesel Particulate Matter (DPM)
Reductions in 2024 and 2029:**



Emissions ^a	NOx	DPM
2017 Emissions (tpy)	2,710	34.8
Projected 2024 Emissions Baseline (tpy)	1,841	13.2
Emission Reductions from CERP, by 2024 (tpy)	143	1.2
Emission Reductions from CERP, by 2024 ^b (%)	8	9
Projected 2029 Emissions Baseline (tpy)	1,851	11.2
Emission Reductions from CERP, by 2029 (tpy)	377	1.4
Emission Reductions from CERP, by 2029 ^c (%)	20	13

^aPer CARB guidance, the emissions baseline was estimated for 2017, and milestone years 2024 and 2029

^bPercent calculated based on 2024 emissions baseline

^cPercent calculated based on 2029 emissions baseline

More Information on the CERPs



Wilmington, Carson, West Long Beach:

<http://www.aqmd.gov/docs/default-source/Agendas/Governing-Board/2019/2019-sep6-025c.pdf>

San Bernardino, Muscoy:

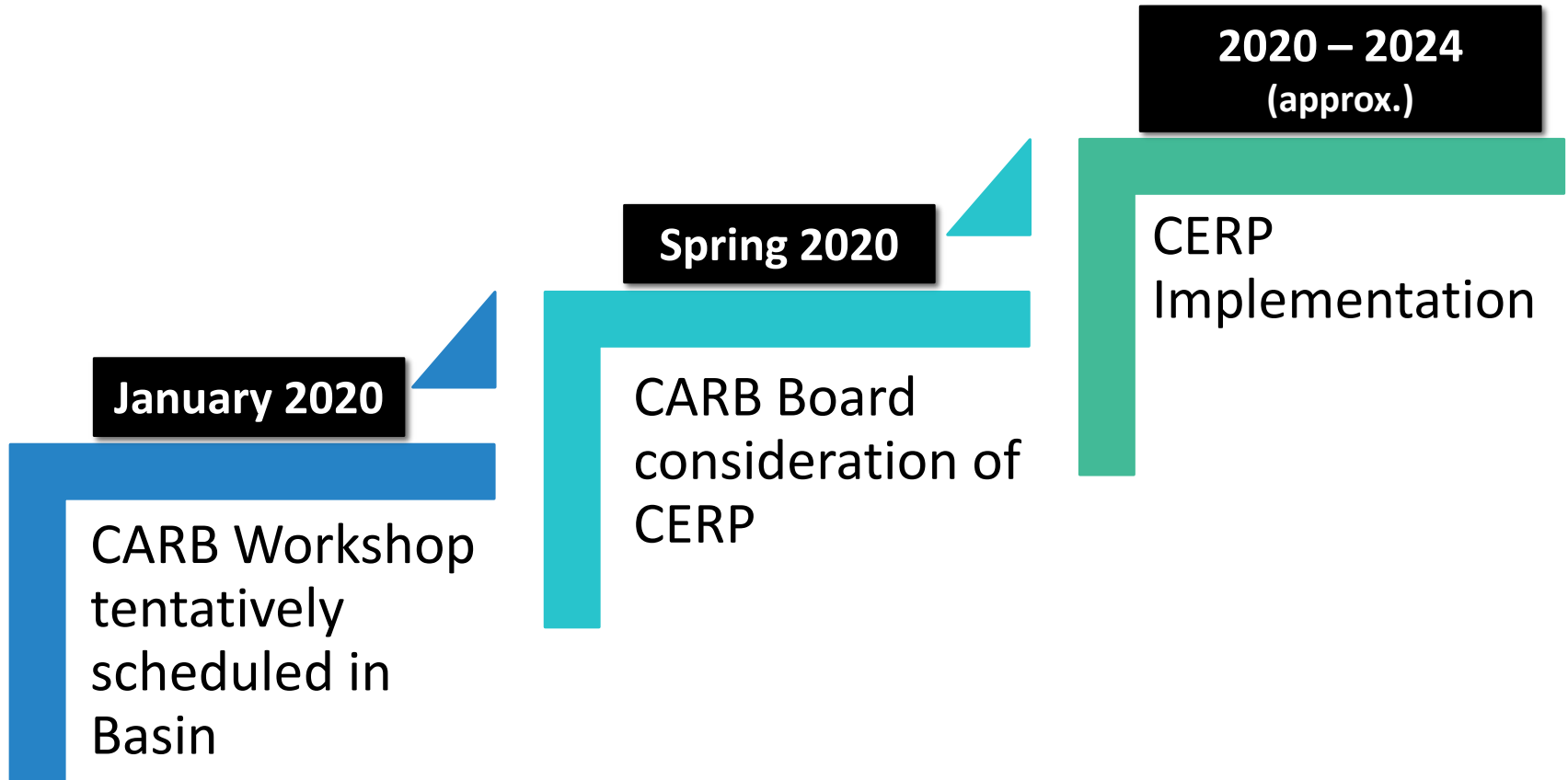
<http://www.aqmd.gov/docs/default-source/Agendas/Governing-Board/2019/2019-sep6-025a.pdf>



East Los Angeles, Boyle Heights, West Commerce:

<http://www.aqmd.gov/docs/default-source/Agendas/Governing-Board/2019/2019-sep6-025b.pdf>

Next Steps for Year 1 Communities



For Additional Information

AB 617 website: www.aqmd.gov/AB617

Email: AB617@aqmd.gov

Follow us @SouthCoastAQMD

