



San Diego County APCD

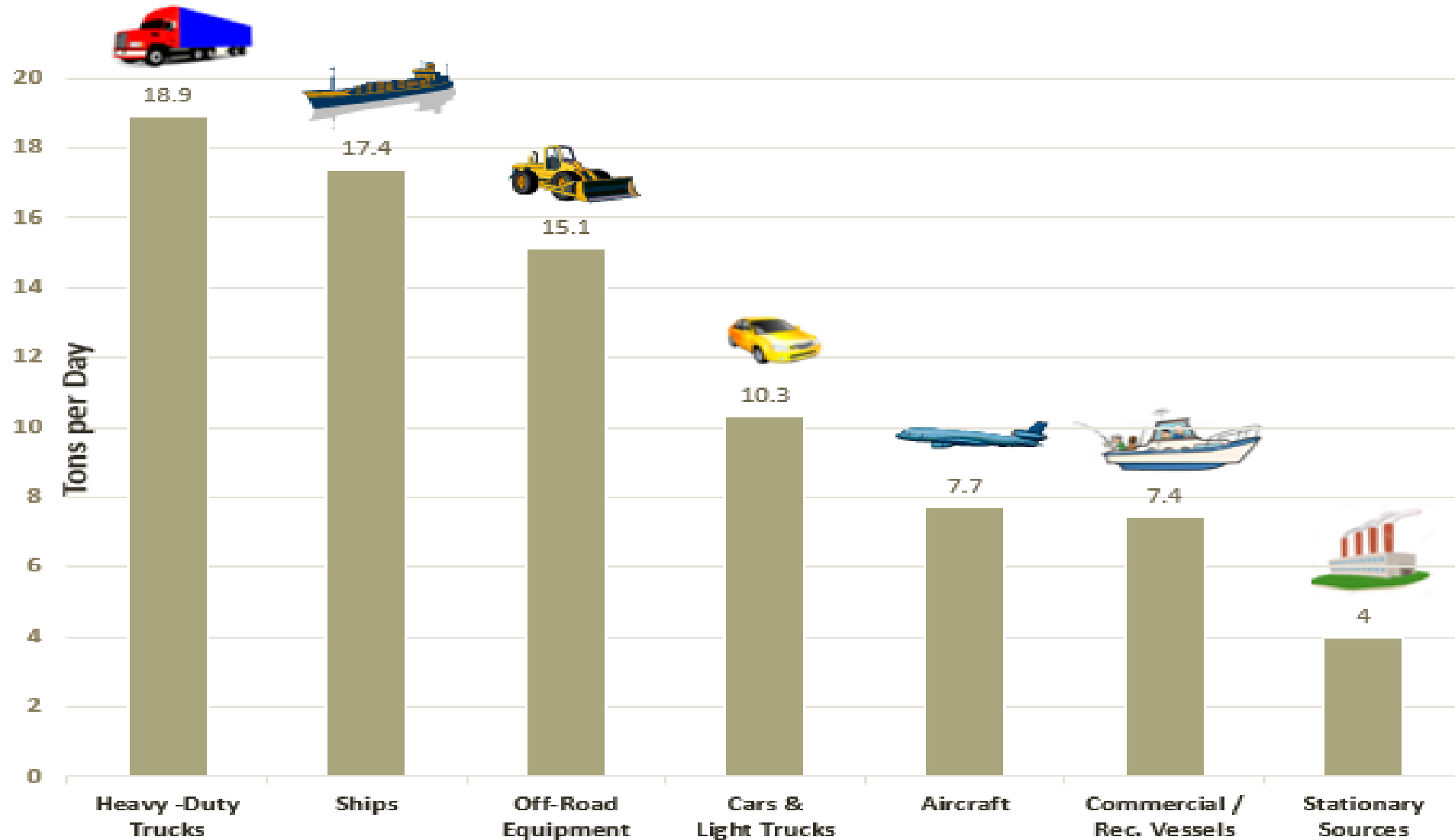
Mobile Source Program

Topics

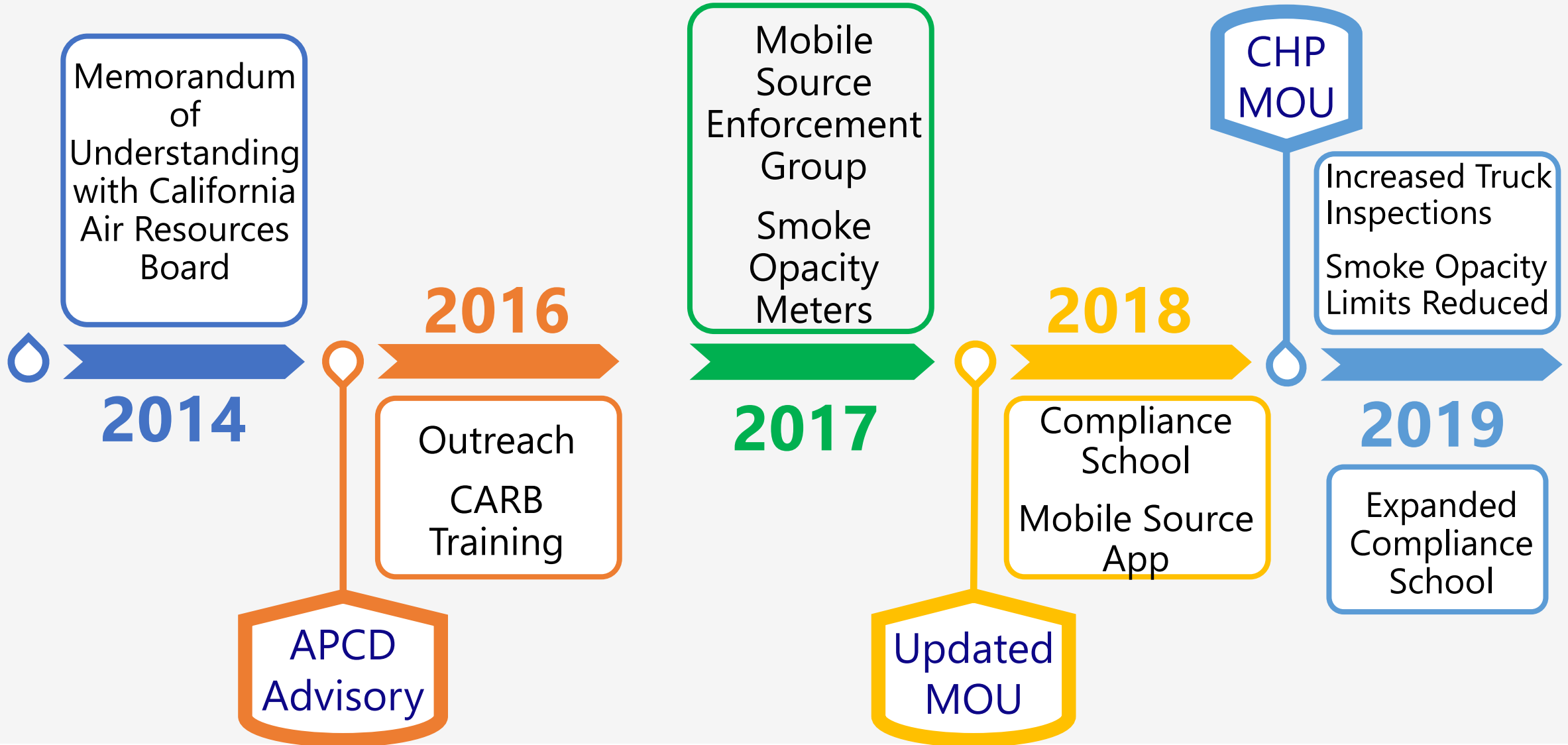
- Program Overview
- Inspections:
 On-Road and Off-Road
- Enforcement Stats
- Commercial Vehicle Idling Reg.
- Questions



Top Sources of NOx



Program Milestones

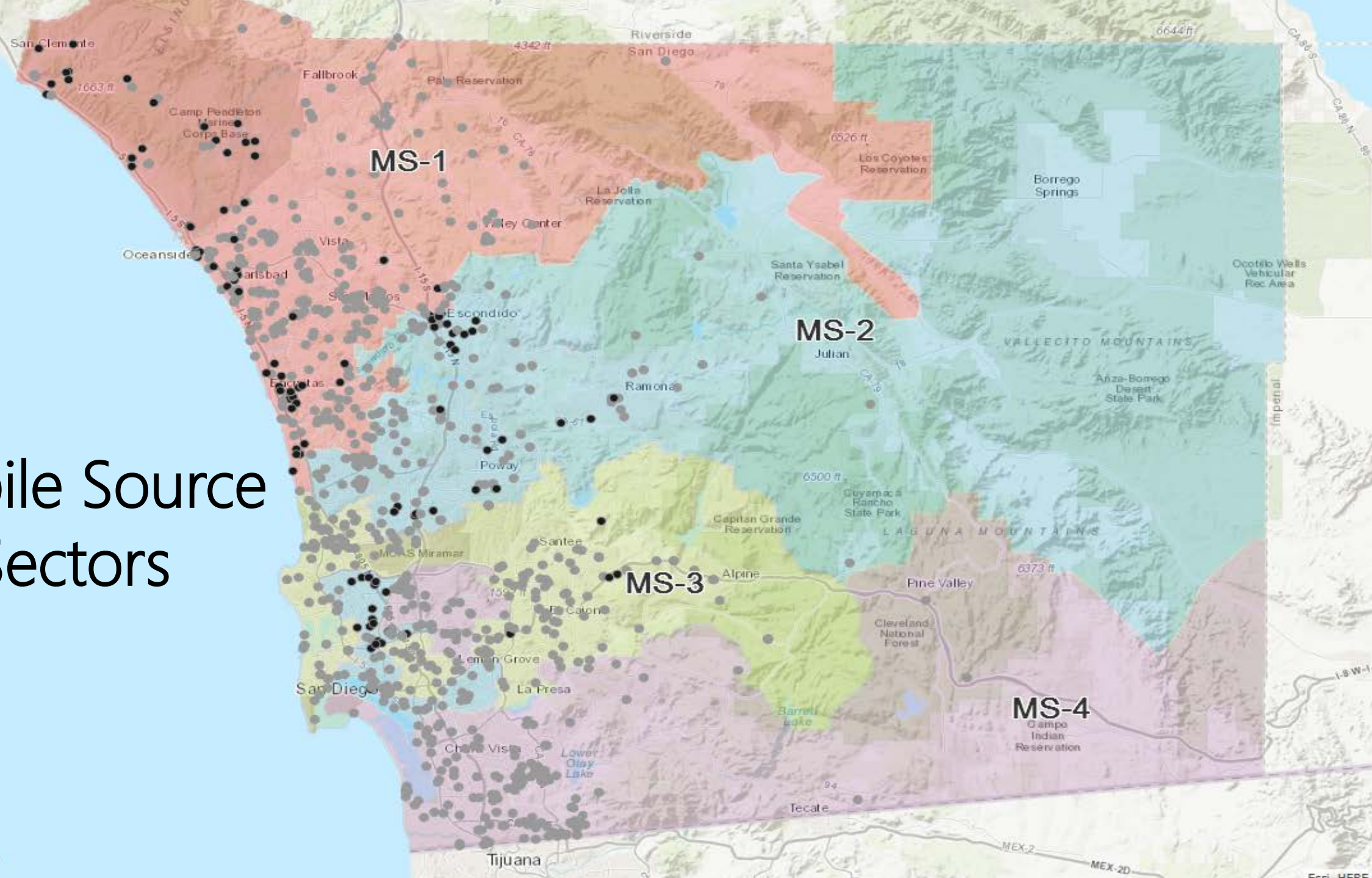


Mobile Source Regulations



- | | |
|--|------------|
| 1. Off-Road Equipment | 13CCR 2449 |
| 2. Commercial Vehicle Idling | 13CCR 2485 |
| 3. School Bus Idling | 13CCR 2480 |
| 4. Statewide Truck and Bus | 13CCR 2025 |
| 5. Heavy-Duty Vehicle Inspection Program | 13CCR 2182 |
| 6. Drayage Trucks | 13CCR 2027 |
| 7. Transportation Refrigeration Units | 13CCR 2477 |

Mobile Source Sectors



Off-Road Inspections

Registered to current owner

EIN labels posted on both sides of vehicle

Idling Limit

Low-use vehicles under 200 hours

Fleet requirements

- Emission targets and annual reporting

Adding vehicle restrictions



EIN Mishaps

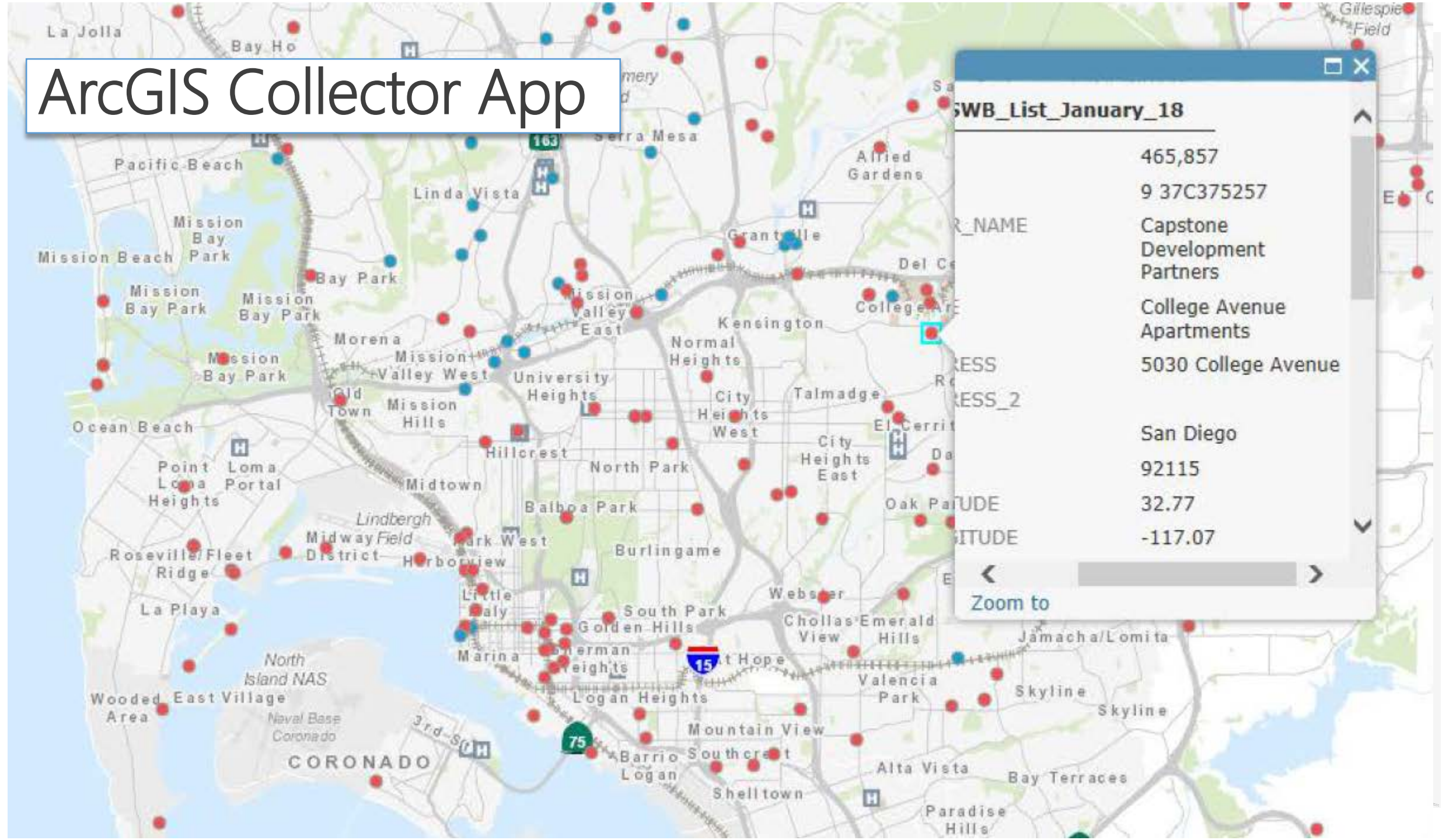


ArcGIS Collector App

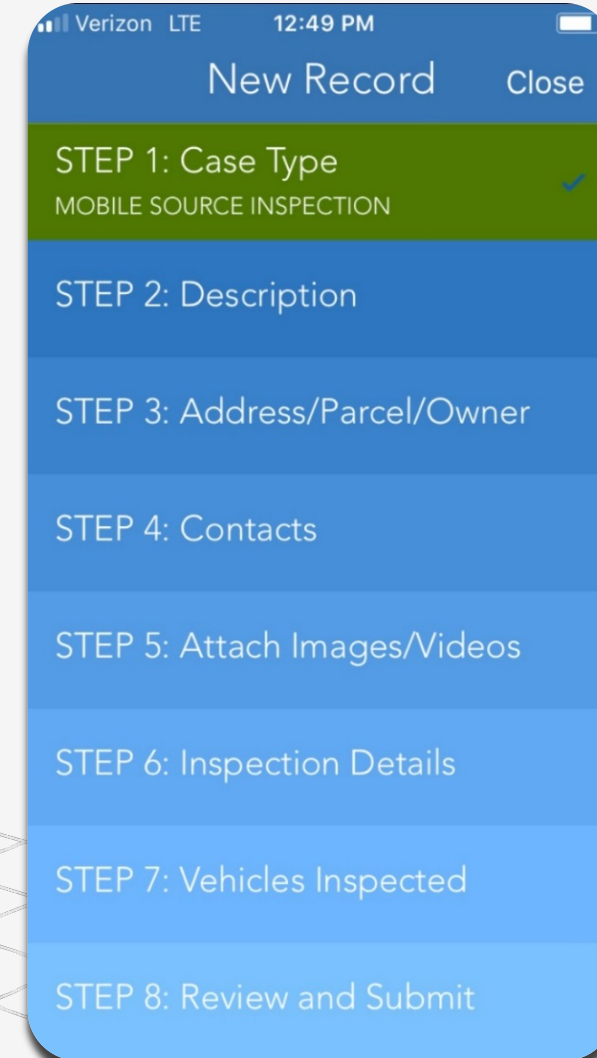
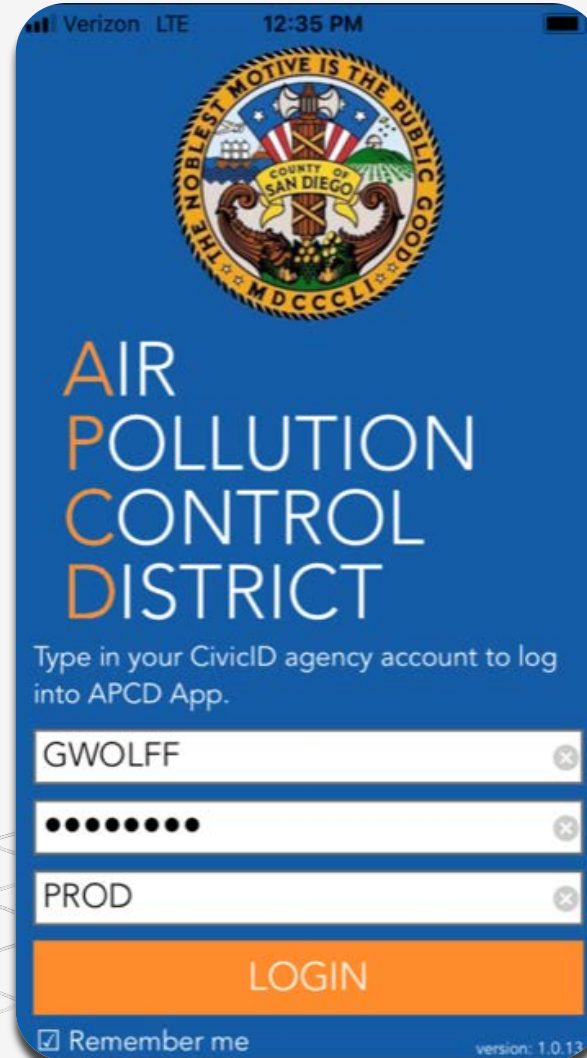
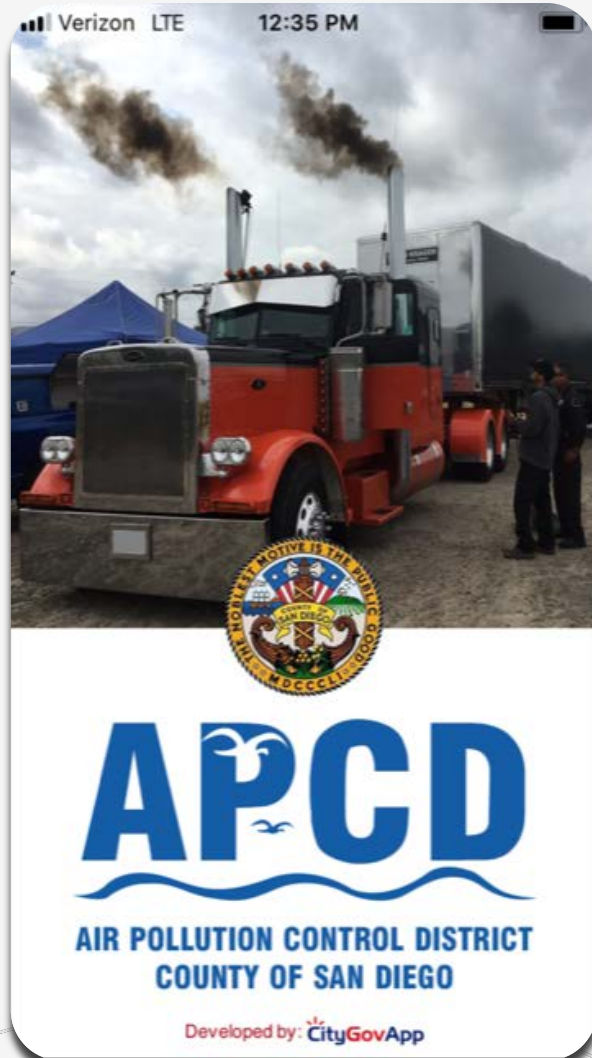
SWB_List_January_18

| | |
|------------|-------------------------------|
| AREA | 465,857 |
| OBJECTID | 9 37C375257 |
| OWNER_NAME | Capstone Development Partners |
| ADDRESS | College Avenue Apartments |
| ADDRESS_2 | 5030 College Avenue |
| CITY | San Diego |
| ZIP | 92115 |
| LONGITUDE | 32.77 |
| LATITUDE | -117.07 |

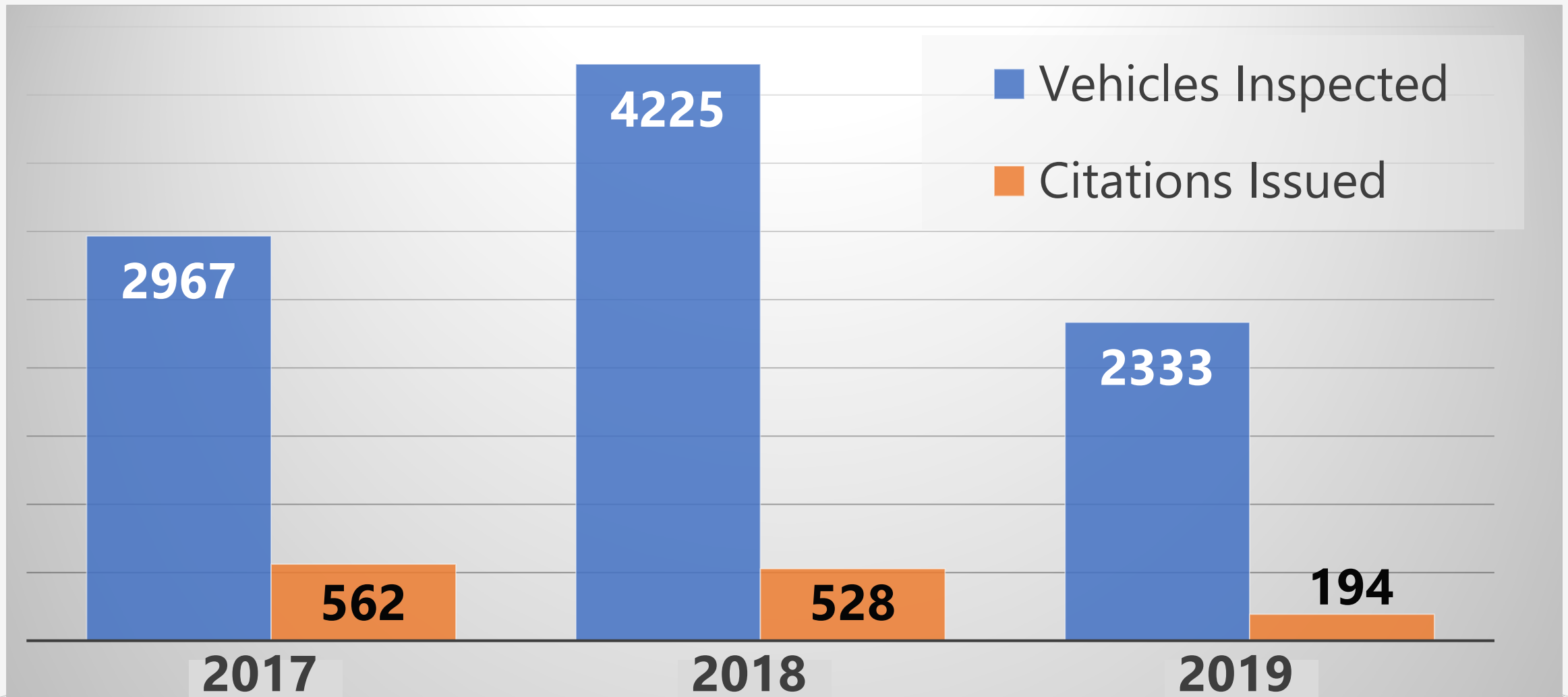
Zoom to



Mobile Source App



Enforcement Stats Off-Road Equipment



Heavy Duty Truck Inspections

CHP Inspection Facilities

Construction Sites

Ports

Idling Complaints

Cold Storage Facilities

Truck Stops



Truck Inspections and TRU/Reefers



TERPILLAR INC. IMPORTANT ENGINE INFORMATION / AVIS IMPORTANT 1995 5EK5885

| MODEL / MODELE MOTEUR | DISPLACEMENT / CYL. | 14.6 L | VALVE LASH INT / JEU SOUPAPES ADM | 0.28 mm | EXH / EXHAP | 6.78 mm | | | | | |
|-----------------------|---------------------|-----------------------|-----------------------------------|--------------------------|--------------------------|-----------------------|--|--------------------|------------------------|---------------------------|------|
| 4E CODE ADV | MAX KW (HP) | MAX RATED SPEED (RPM) | MAX REGIME NOMINAL (RPM) | MAX LOW IDLE SPEED (RPM) | MAX REGIME VALENTI (RPM) | FUEL RATE MAX KW (HP) | DEBIT/DINJ A PUIS MAXI (mm ³ /STROKE) | INITIAL CALAGE 3MM | INITIAL DYNJ (DEGREES) | EXHAUST EMISSION CONT SYS | DISP |
| C | 324.5 (435) | 1800 | 1800 | 600 | 600 | 242 | 242 | ELECTRONIC | EM. D. TC. | | |

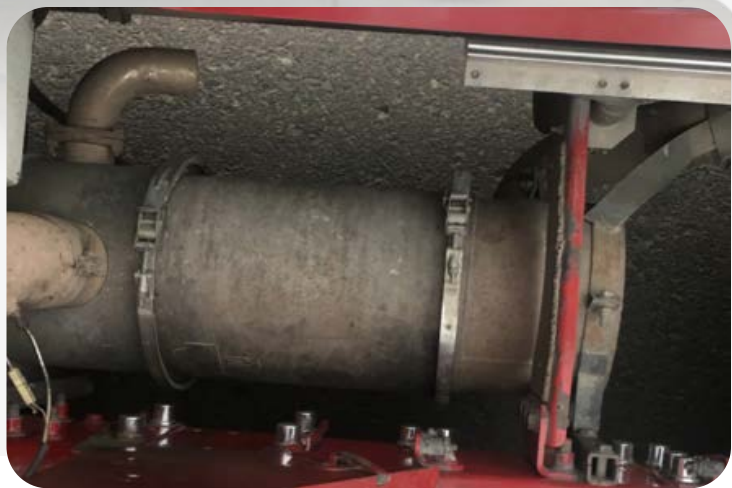
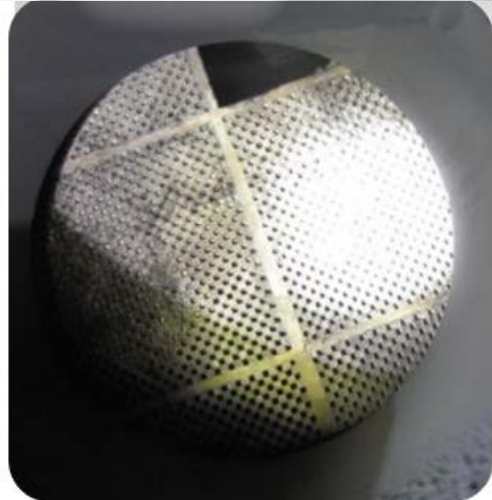
APPLICABLE TO 1995 MODEL YEAR NEW HEAVY DUTY DIESEL ENGINES AND HAS A PRIMARY HEAVY/HEAVY-DUTY ENGINE. THIS ENGINE IS NOT CERTIFIED FOR USE IN AN URBAN BUS AS DEFINED AT 40 CFR 10.103-2. SALE OF THIS ENGINE IS IN VIOLATION OF FEDERAL LAW UNDER THE CLEAN AIR ACT. THIS ENGINE IS CERTIFIED TO OPERATE ON DIESEL FUEL.

entièrement destiné à des applications de Service très-lourdes, est conforme aux réglementations de l'Agence américaine de protection de l'environnement pour nouveaux moteurs diesel lourds construits en 1995. Ce moteur n'est pas homologué pour les bus des transports publics urbains, mais il est autorisé pour l'utilisation dans les bus des transports publics urbains. Cette utilisation constitue une violation de la Loi fédérale sur la propreté de l'air (Clean Air Act).

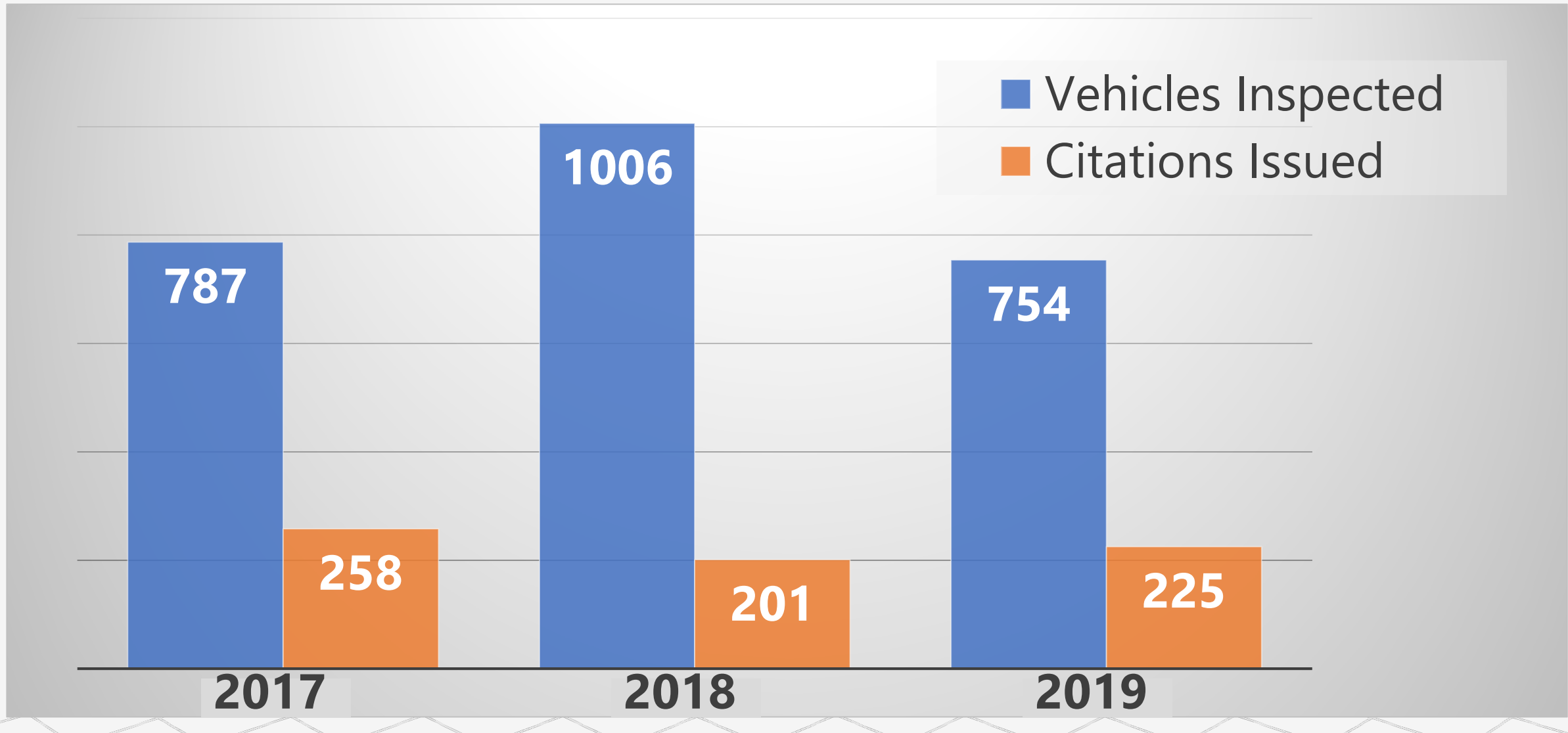
DATE OF MANUFACTURE MONTH / DE FABRICATION MOIS: 08



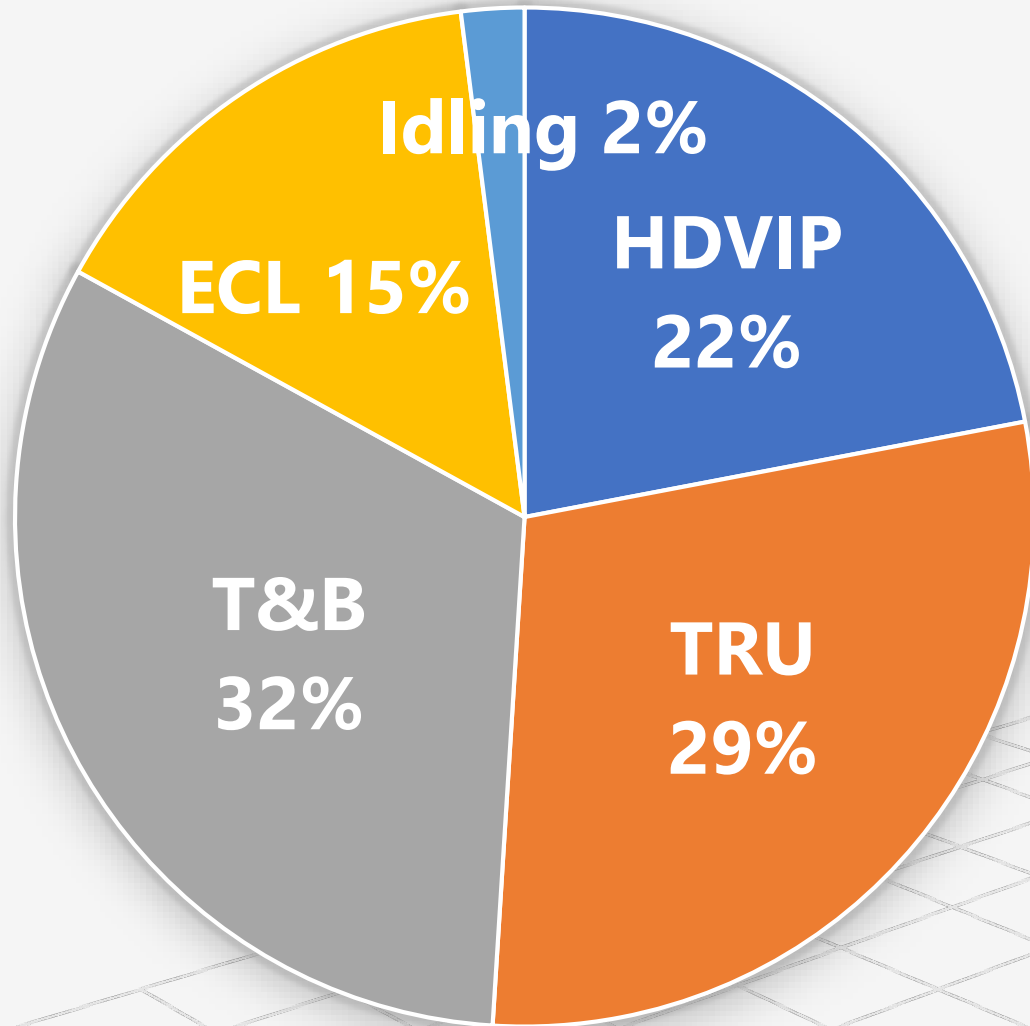
Truck Inspections



Enforcement Stats - Truck Inspections

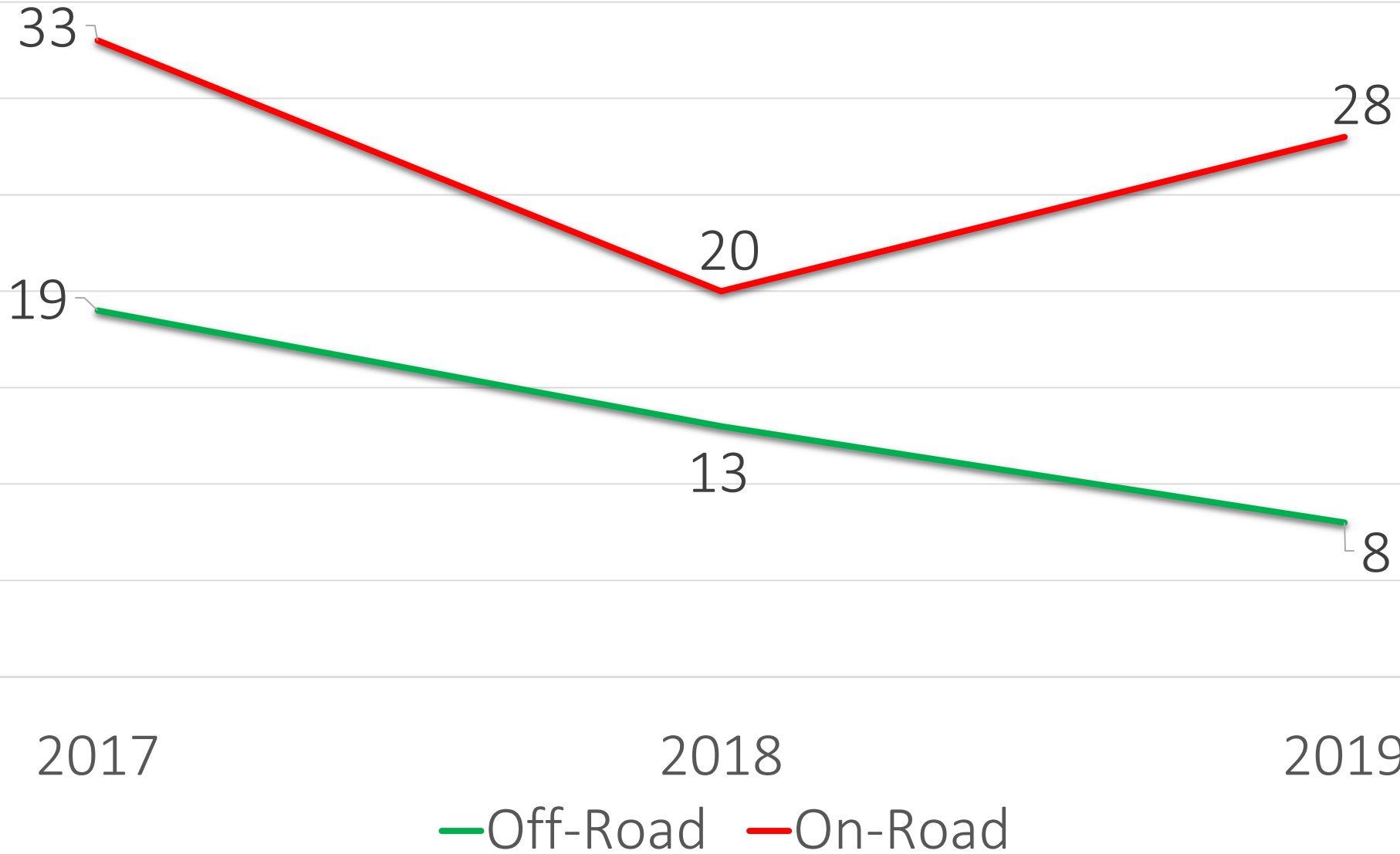


2019 Citation Types (Truck Inspections)



- Emission Control Label
- Heavy Duty Vehicle Inspection Program
 - *Smoke opacity violation or DPF failure alarm*
- Transportation Refrigeration Units
- State Truck and Bus

% Non-Compliance



Commercial Vehicle Idling Regulation

Heavy-duty diesel vehicles with a Gross Vehicle Weight Rating (GVWR) of 10,000 lbs. or heavier. Limited to 5 minutes for non-essential idling.



Restricted areas include housing units, schools, hotels, motels, hospitals, senior care facilities or childcare facilities.



City Delivery



Conventional Van



Landscape Utility



Large Walk In



Mini Bus



Beverage



Rack



School Bus



Single Axle Van



Stake Body

Senate Bill 1 and Field Enforcement



UPDATED SMOKE OPACITY STANDARDS

Engines Equipped with a Diesel Particulate Filter (DPF)

5% Opacity Limit

Pre-2007 Model Year (MY) Engines without a DPF

1997 – 2006 MY Engines

20% Opacity Limit

1991 – 1996 MY Engines

30% Opacity Limit

Pre-1991 MY Engines

40% Opacity Limit

Engines Equipped with a Level 2 Verified Diesel Emission Control Strategy (VDECS)

20% Opacity Limit

Two-Engine Cranes Driven by a non-DPF Off-Road Engine

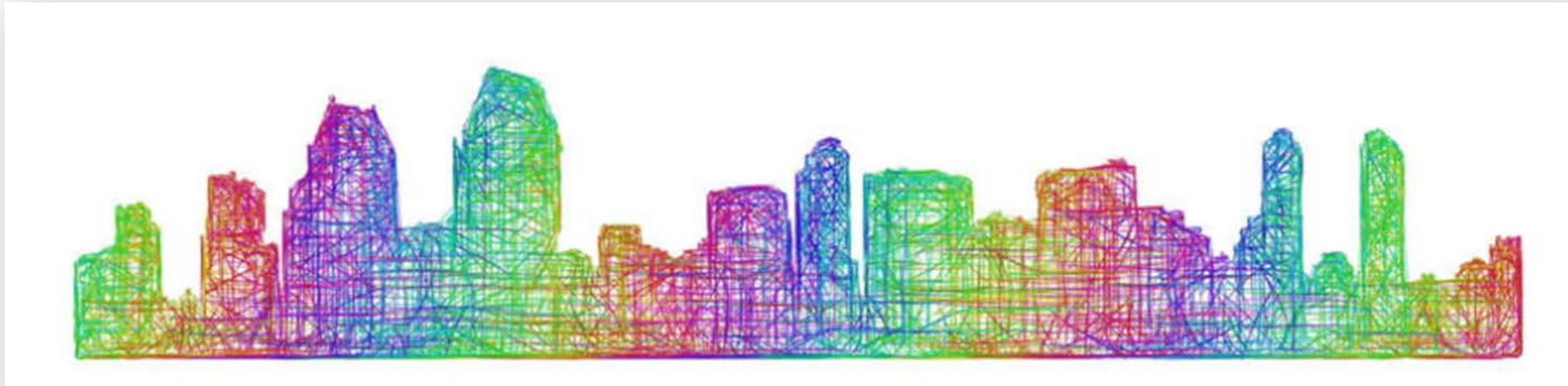


LOW-USE VEHICLES

Diesel Particulate Filter Warning Lights



Questions



Mobile Source Program Contact:

Tim Wolff (858) 586-2677

tim.wolff@sdcounty.ca.gov