

CALIFORNIA
AIR RESOURCES BOARD

SF6 REGULATORY WORKSHOP

AMENDMENTS TO GAS INSULATED SWITCHGEAR REGULATION

Public Workshop

Tuesday, November 28, 2017

WORKSHOP AGENDA

- Introductions
- Staff Presentation
- Public Comments
- Next Steps

BACKGROUND

AB 32: California Global Warming Solutions Act of 2006

- Requires California to reduce its GHG emissions to 1990 levels by 2020.
 - ✓ ARB must adopt regulations to achieve the maximum technologically feasible and cost-effective GHG emission reductions.

SB 32 & AB 197: 2030 Climate Change Goals

- Requires California to reduce GHG emissions to 40 percent below 1990 levels by 2030

BACKGROUND CONT.

Sulfur Hexafluoride (SF6) Emission Reductions from Gas Insulated Switchgear

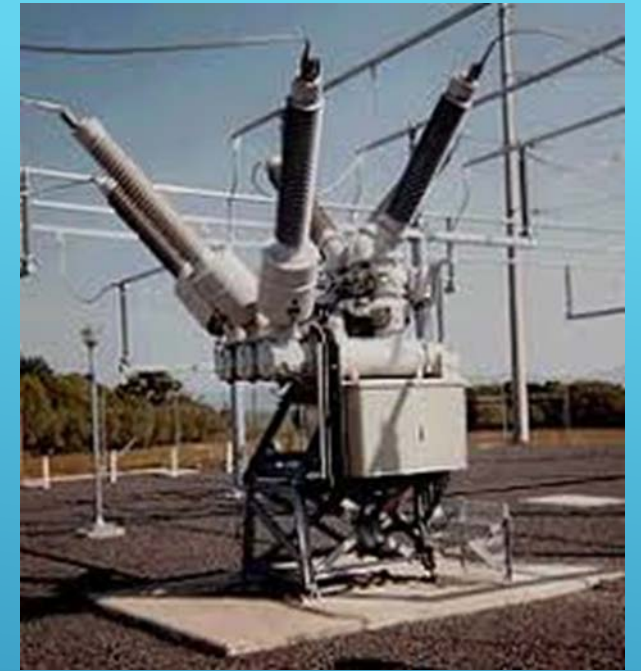
- ✓ Current CARB SF6 Regulation sets an annual emission rate limit for SF6 as a percentage of an entity's cumulative GIS nameplate capacity.
- ✓ Maximum allowable annual SF6 emission rate decreases one percent per year until 2020, thenceforth it will remain one percent.

KEY POTENTIAL AMENDMENTS

- ✓ Nameplate capacity adjustments
- ✓ Provide credit for the use of non-SF6 insulating gases
- ✓ Phase-out of SF6

NEXT STEPS

- Submit comments by December 19, 2017
- Hold additional workshops throughout spring and summer of 2018, as necessary
- Begin formal rulemaking process in fall of 2018
- Present regulatory amendments to the Board in winter of 2018



Thank you! For more information contact:

- **ARB Climate Change Webpage**
<https://www.arb.ca.gov/cc/cc.htm>
- **ARB SF6 from GIS Webpage**
<https://www.arb.ca.gov/cc/sf6elec/sf6elec.htm>
- **Dave Mehl**
(916) 323-1491
dmehl@arb.ca.gov