

# Direct and Indirect Effects of Climate Change on Public Health and the Environment

Lauren Zeise

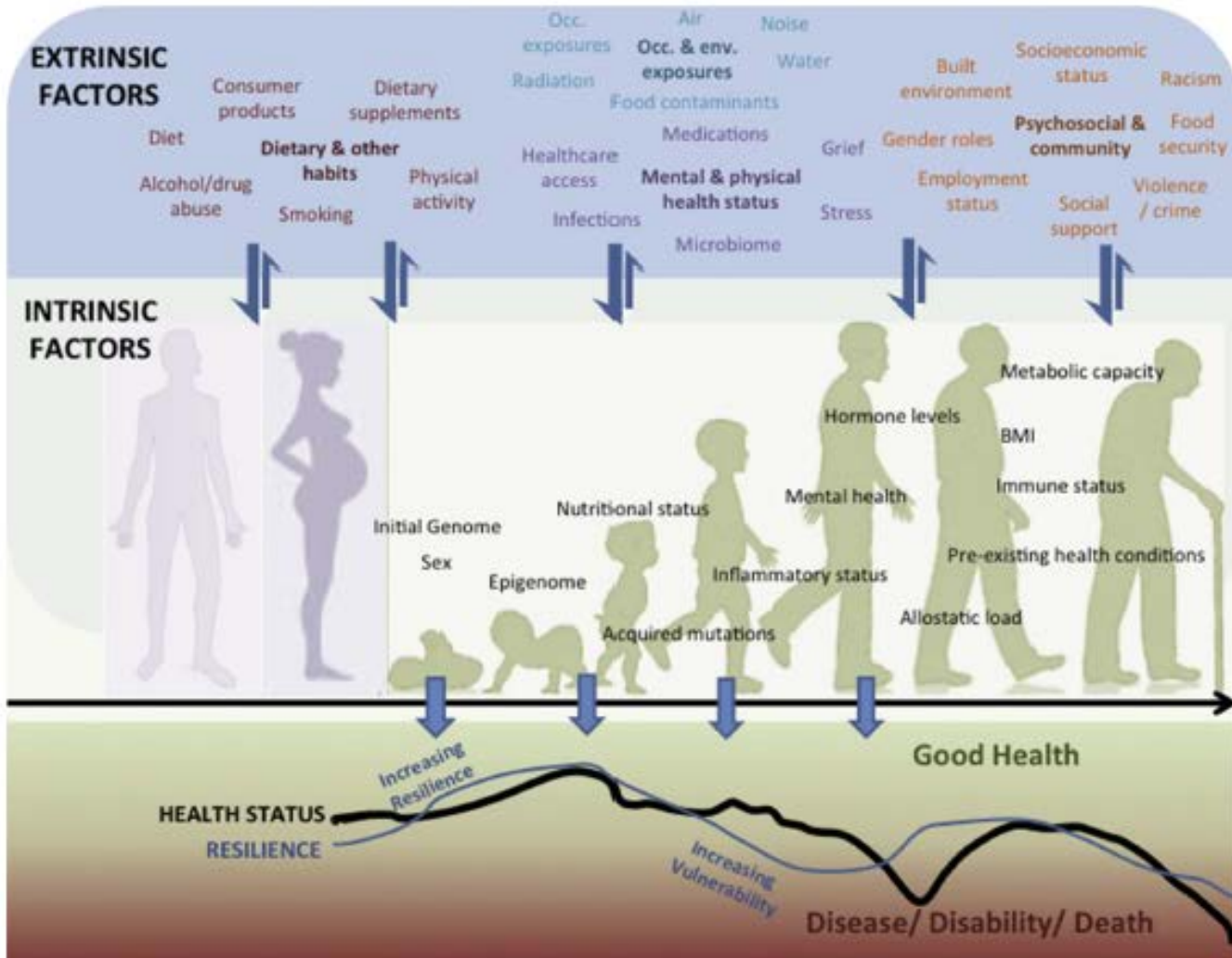
Office of Environmental Health Hazard Assessment  
California EPA

---

July 13, 2018



# Context and Perspective



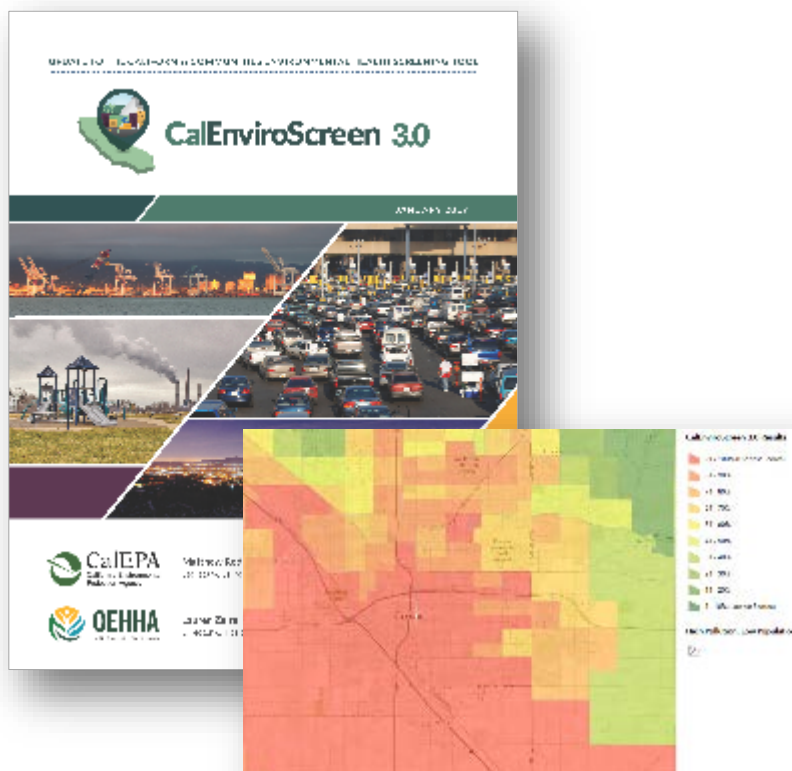
McHale CM, Osborne G, Morello-Frosch R, Salmon AG, Sandy MS, Solomon G, Zhang L, Smith MT, Zeise L. Assessing health risks from multiple environmental stressors: Moving from G×E to I×E. *Mutat Res.* 2018 775:11-20.

# Topics

- CalEnviroScreen
- Climate Change Indicators
- Health Impact Profiling



# CalEnviroScreen 3.0























- Spatial analysis of relative burdens in California communities from pollution and population vulnerability
- 20 indicators combined into a single score
- Census tract scale

Available at: <http://oehha.ca.gov/calenviroscreen/report/calenviroscreen-30>



# Indicators

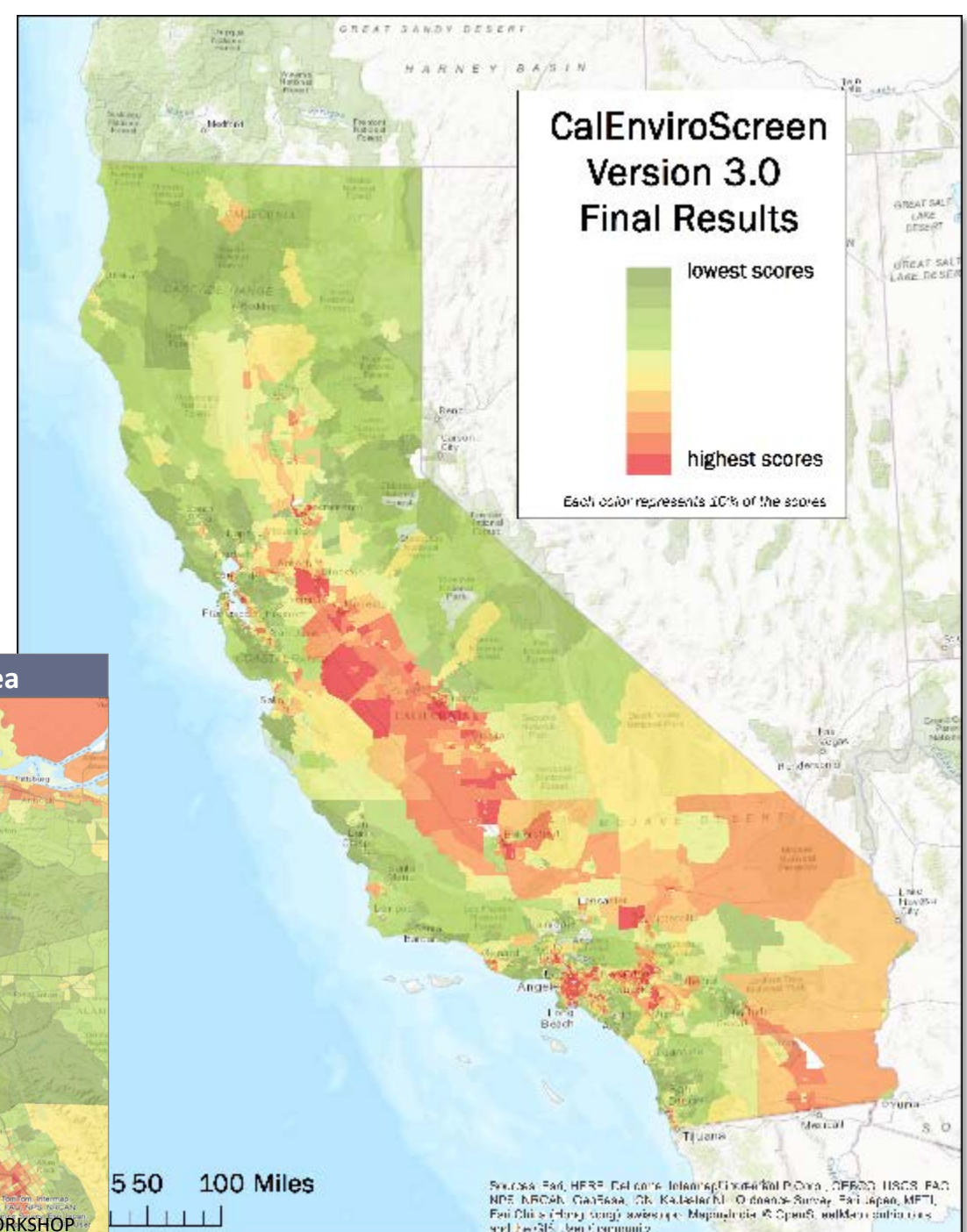
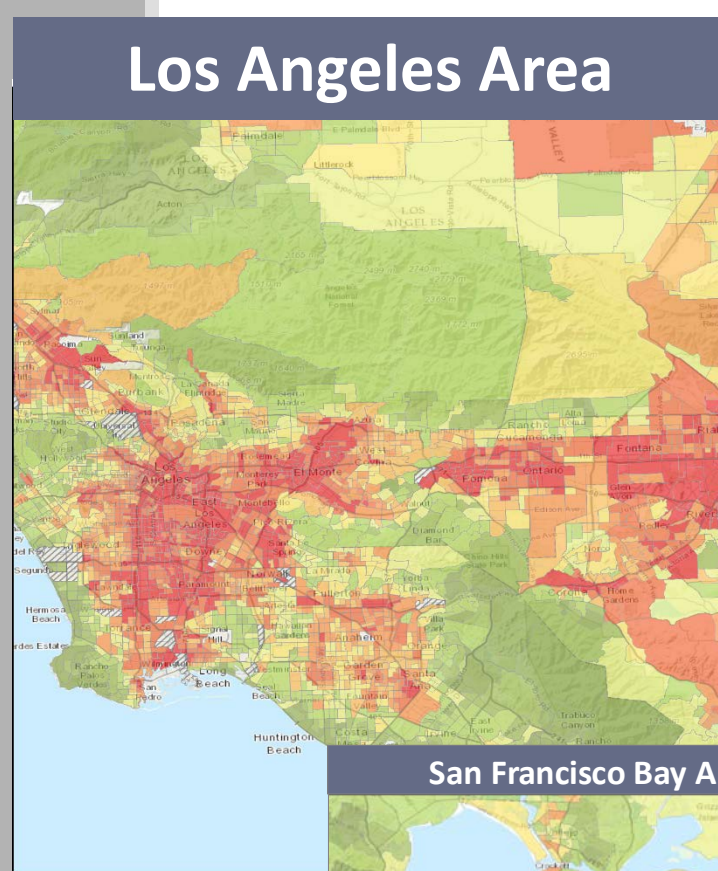


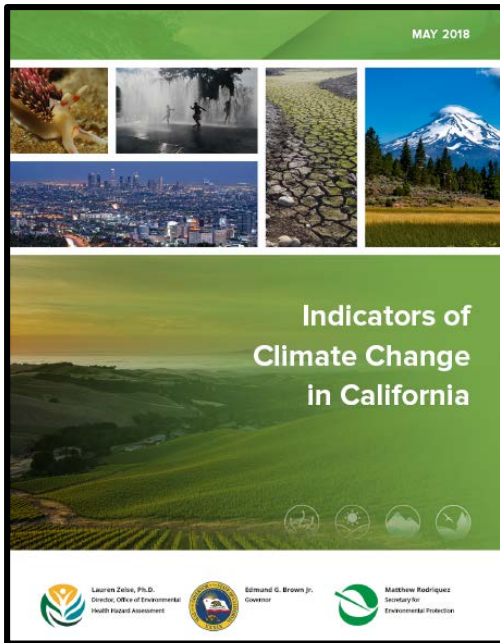
Pollution Burden		Population Characteristics	
Exposures	Environmental Effects	Sensitive Populations	Socioeconomic Factors
 Ozone  PM2.5  Diesel Particulate Matter  Drinking Water Contaminants  Toxic Releases from Facilities  Traffic  Pesticide Use	 Solid Waste Sites and Facilities  Cleanup Sites  Groundwater Threats  Impaired Water Bodies  Hazardous Waste Generators and Facilities	 Asthma  Cardiovascular Disease  Low Birth Weight Infants	 Educational Attainment  Housing Burdened Low Income Households  Linguistic Isolation  Poverty  Unemployment





# Results





## INDICATORS OF CLIMATE CHANGE IN CALIFORNIA

**CLIMATE CHANGE DRIVERS**

- Greenhouse gas emissions
- Atmospheric greenhouse gas concentrations

- Atmospheric black carbon concentrations
- Acidification of coastal waters

**CHANGES IN CLIMATE**

- Annual air temperature
- Extreme heat events
- Winter chill

- Cooling and heating degree days
- Precipitation
- Drought

**IMPACTS OF CLIMATE CHANGE ON PHYSICAL SYSTEMS**

- Snowmelt runoff
- Snow-water content
- Glacier change
- Lake water temperature

- Coastal ocean temperature
- Sea level rise
- Dissolved oxygen in coastal waters

**IMPACTS OF CLIMATE CHANGE ON BIOLOGICAL SYSTEMS**

*On humans*

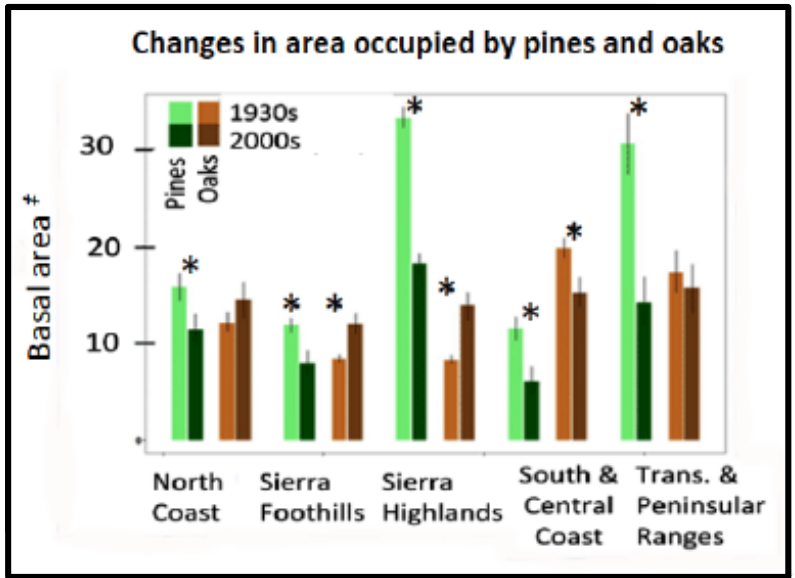
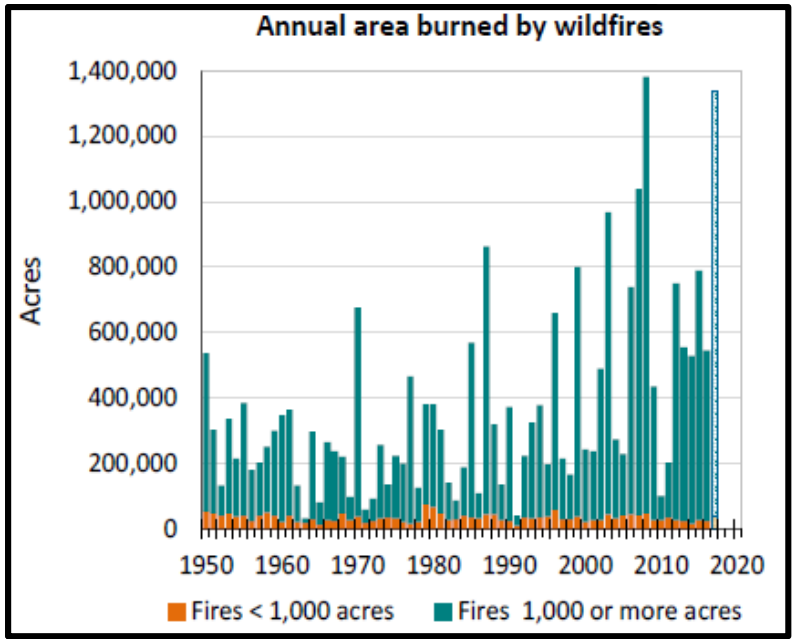
- Vector-borne diseases
- Heat-related mortality and morbidity

*On vegetation*

- Forest tree mortality
- Wildfires
- Ponderosa pine forest retreat
- Vegetation distribution shifts
- Changes in forests and woodlands
- Subalpine forest density
- Fruit and nut maturation time

*On wildlife*

- Spring flight of Central Valley butterflies
- Migratory bird arrivals
- Bird wintering ranges
- Small mammal and avian range shifts
- Effects of ocean acidification on marine organisms (*Type III*)
- Nudibranch range shifts
- Copepod populations
- Sacramento fall-run Chinook salmon abundance
- Cassin's auklet breeding success
- California sea lion pup demography



# Predicting and Quantifying Health Effects

---



# Epidemiology studies

## Criteria Air Pollutants

- Particulate matter (e.g., PM2.5, Coarse particles)
- NO<sub>2</sub> and Ozone



## Traffic Exposure, e.g.,

- Miscarriage/Sensitive Populations
- Children's respiratory health

## Temperature, e.g.,

- Heat and infant death
- Heat wave morbidity and mortality
- Temperature and emergency room visits
- Temperature and preterm delivery

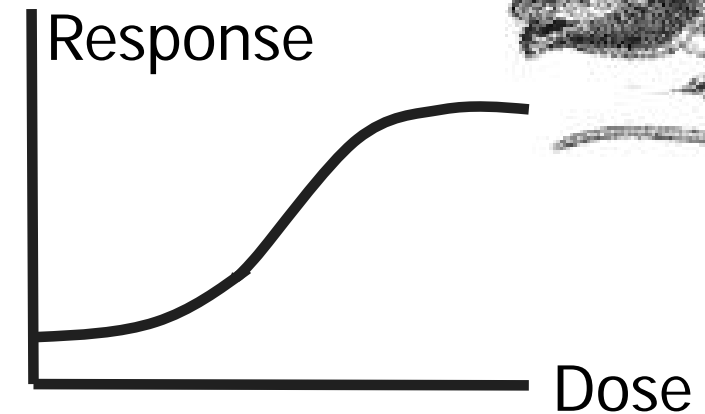
# Toxicology

## Hazard Identifications

- Endpoints and hazard traits

## Dose Response Assessments

- Reference Exposure Levels
- Cancer Potency Values





# Predicting health impacts of actions

