

Framework for the Health Analysis of the Scoping Plan

Barbara Weller
Research Division

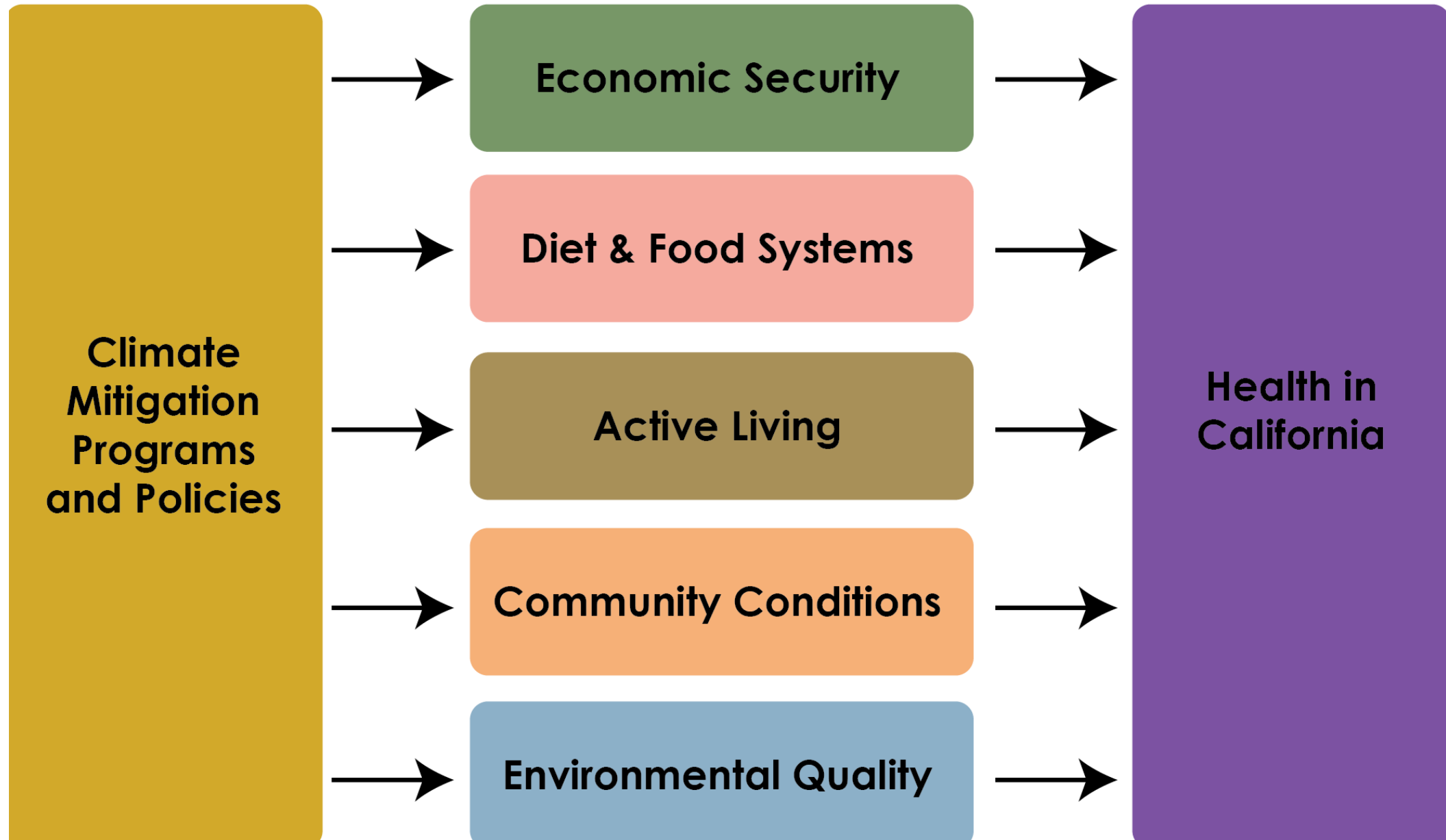
Scope of Framework

- Includes pathways from the programs in the Scoping Plan to drivers of health
- State, regional, and localized health impacts included
- Both positive and negative health impacts will be assessed
- Includes quantitative and qualitative analysis
- Includes additional factors that can impact health
 - E.g., social inequalities, economic inequities, and living conditions
- Does not include contributions towards global impacts

Framework Development Process

- Collaboration among CARB, CDPH, and OEHHA
- Documents reviewed
 - 2017 Scoping Plan Update
 - Lancet 2009 Series on Climate and Health
 - Global Burden of Disease (GBD)
 - Can easily compare mortality and morbidity from different causes
 - CEQA Scoping Plan documents
 - Identifies other drivers of health: jobs/employment security, housing quality, food access
- Identified five health drivers with the greatest impact on health in California

Pathway from Climate Action to Health



Health Drivers for Analysis

Economic Security

Income, jobs, economic mobility, affordability (food, energy, housing, transportation)

Diet & Food Systems

Food deserts, local access to healthy food, meat consumption, agriculture land preservation and practices

Active Living

Public and active mobility
accessibility to work, school, green and open space, amenities for all

Community Conditions

Housing, segregation/displacement, community design, civic engagement, social cohesion and capital, urban/rural.

Environmental Quality

Air, water, and soil quality (e.g. air pollution, energy, industry, natural and working lands, indoor air quality)
Exposure to toxins, Life cycle of materials in green technologies (e.g. toxins, pesticides, etc.)

Factors to Consider for Each Driver in Planning

- Strength of the scientific health literature
 - (e.g., air pollution effects are well established in the literature)
- Magnitude of impact on overall health in a population
 - E.g., air pollution is one of many impacts on public health
- Availability of tools to analysis the health impacts in sectors
 - Some areas have well established tools
 - Cancer/Non-cancer health risks calculations for air pollutants
 - Integrated Transportation and Health Impacts Model (ITHIM)
- Cross-cutting factors
 - Urban vs. rural impacts
 - Mental, emotional, social functioning
 - Access to health care

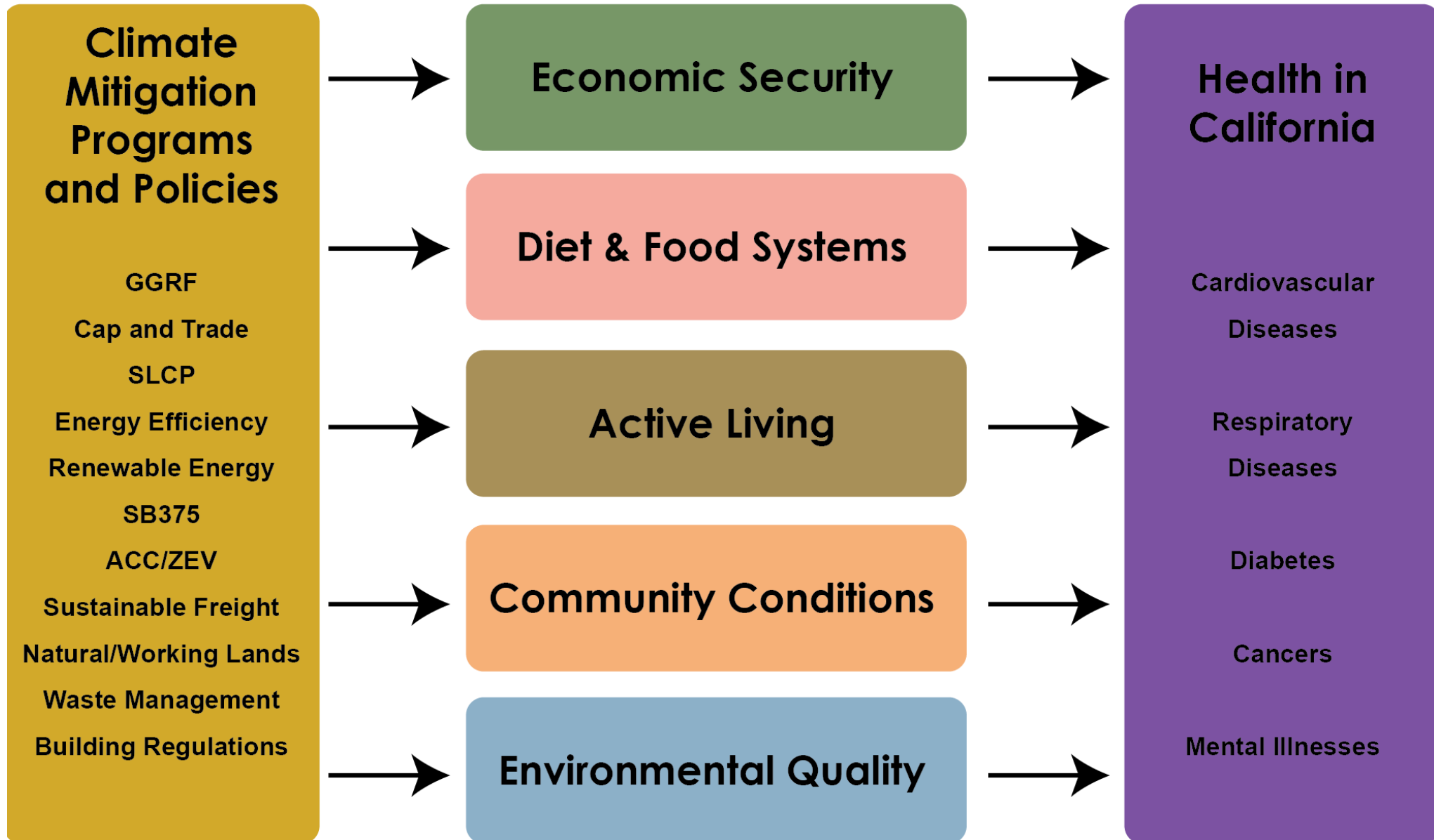
Scoping Plan Program Impacts on Health

- Many interactions between the health drivers and the programs of the Scoping Plan
- The strength of these relationships not the same for all health drivers
 - May be a benefit or disbenefit

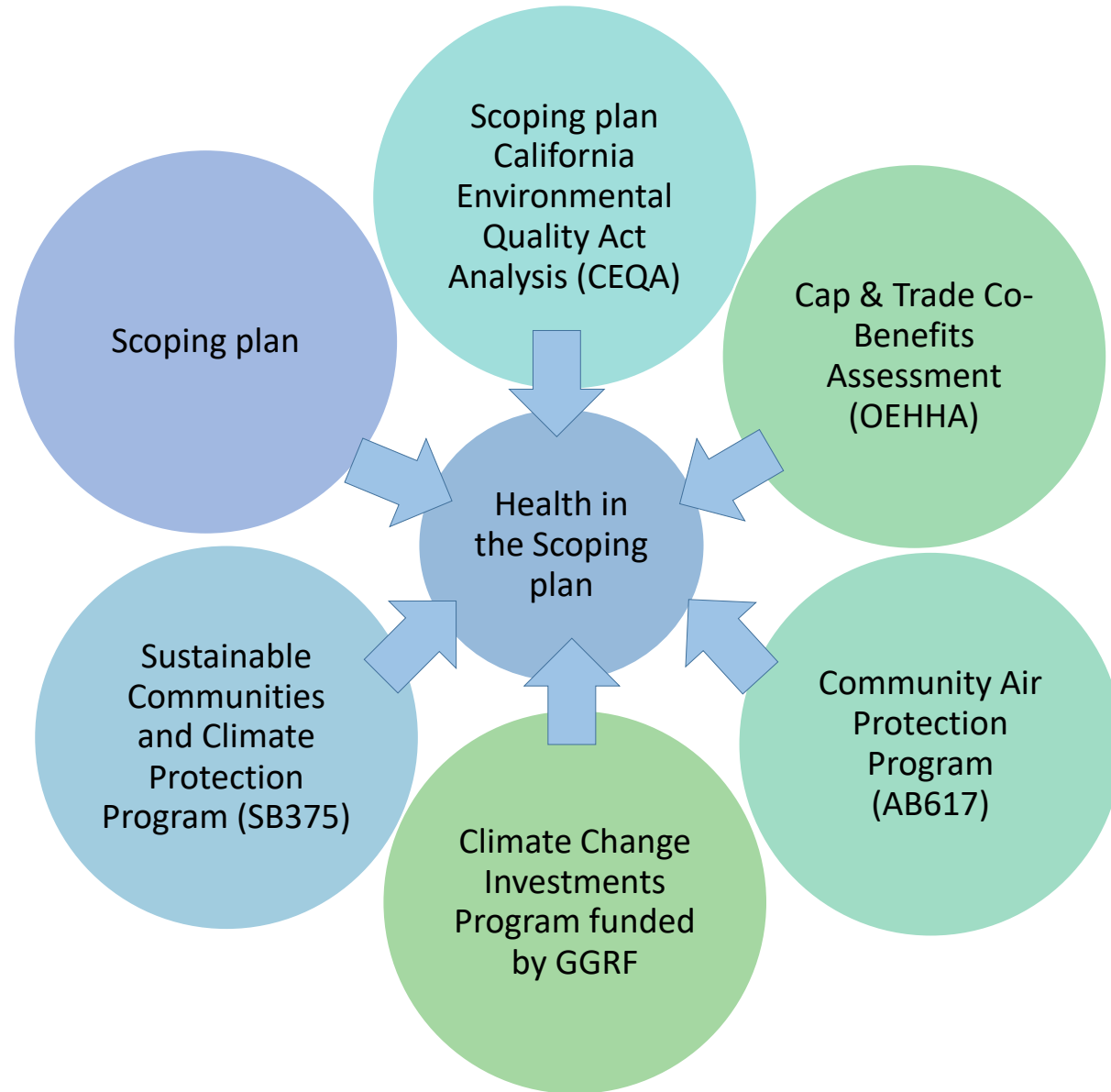
Health Drivers	GGRF	Cap and Trade	SLCP	Energy Efficiency	Renewable Energy	SB375	ACC/ZEV	LCFS	Sustainable Freight	Natural/Working Lands	Waste Management	Building Regulations
Environmental Quality	++	++		+	+	+/-	+/-	++	+++	+		
Air Pollution												
Equity-Vulnerability												
Materials in Green Technology			+	+	+		+/-	+/-	+/-			
Active Living	++					++						
Economic Security	+/-	+/-	+/-	+/-	+/-	+/-	+/-	+/-	+/-	+/-	+/-	+/-
Community Conditions	+			+/-	+	+/-						++
Diet and Food Systems	+	+	+	+	+	+		+/-		+	++	

Strength of relationship : +++, strong; ++, moderate; +, weak; +/-, mixed (benefits and disbenefits). Blank, not applicable

Pathway from Climate Action to Health



Coordination with Other Climate-related Programs



Next Steps and Timeline

2018	Jul	Form Advisory Committee
	Aug	Develop draft Health Analysis Action Plan
	Aug	CDPH and OEHHA review Plan
	Sep	Advisory Committee review of draft Plan
	Sep	Public input on draft Plan
	Oct	CDPH and OEHHA review of revised Plan
	Oct	Advisory Committee review of revised Plan
	Nov	Board presentation on Plan
2019	Jun	Refined methodology (example: ITHIM and Intake Fraction contract results)

Comments and Questions

- Please email any questions to Barbara Weller at barbara.weller@arb.ca.gov or call (916) 324-4816, or by mail to:

**Barbara Weller
California Air Resources Board
1001 I Street
Sacramento, CA 95814**

- Please submit comments to the link on our website at:
 - <https://ww2.arb.ca.gov/resources/documents/july-workshop-health-analysis-climate-change>