

# California Dairy Overview

Joint Dairy Subgroups Meeting

July 26, 2018

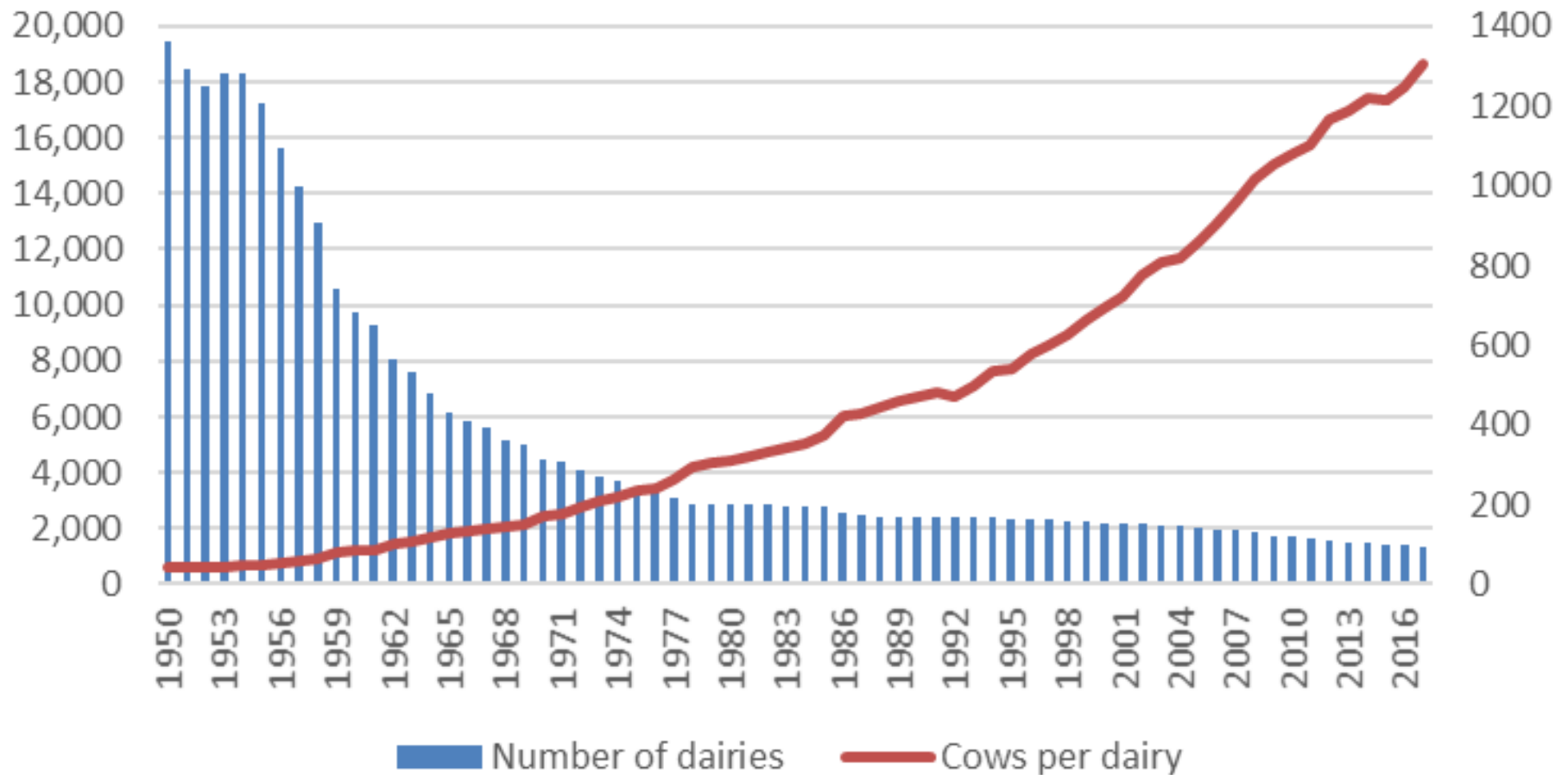
# Background

- \* California is the number 1 milk producing state
  - \* Producing 18.5% of national production
- \* 1390 dairies
- \* Primarily family owned
- \* Average size 1258



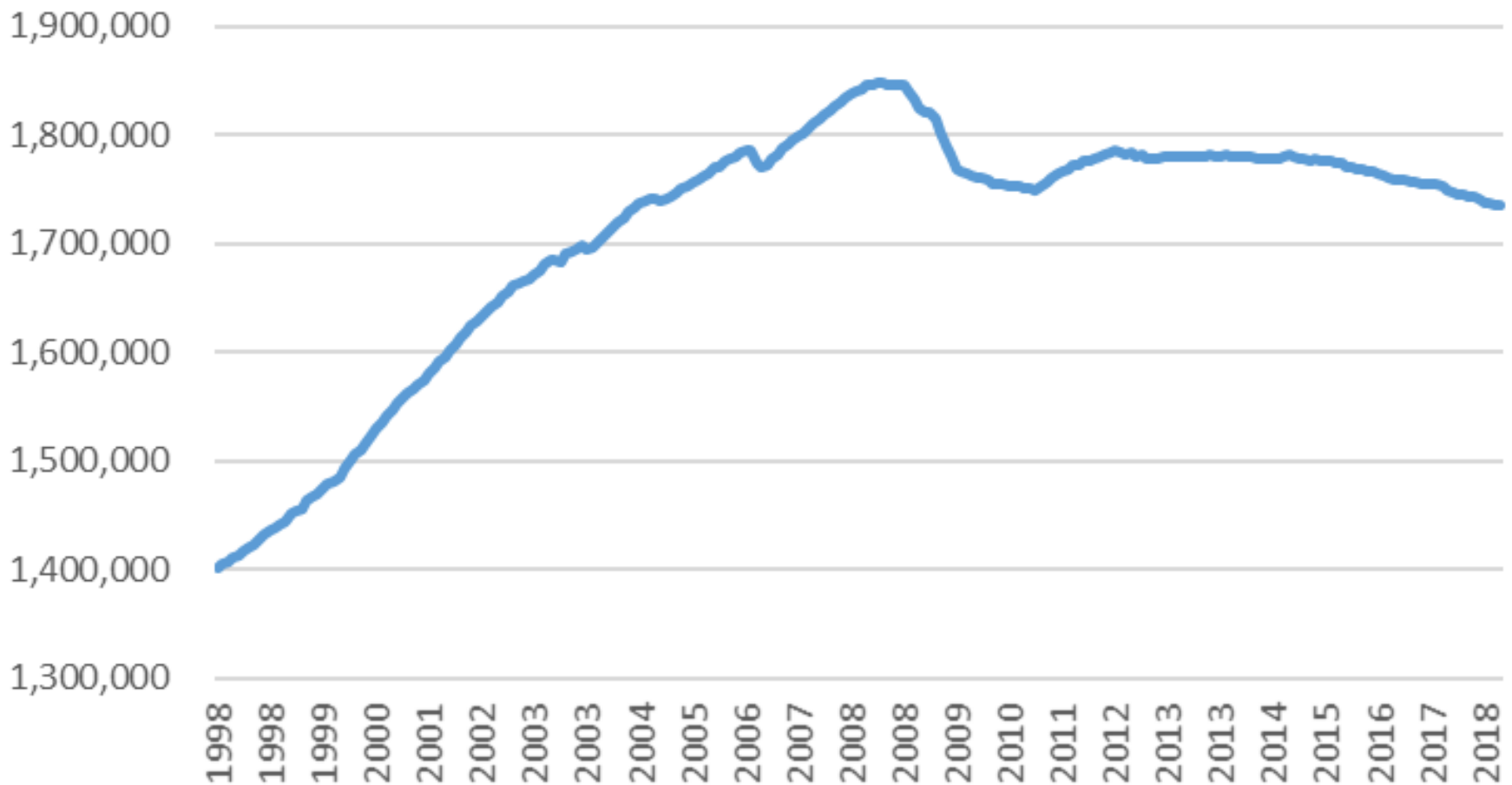
# Trends

## California Number of Dairies and Cows per Dairy



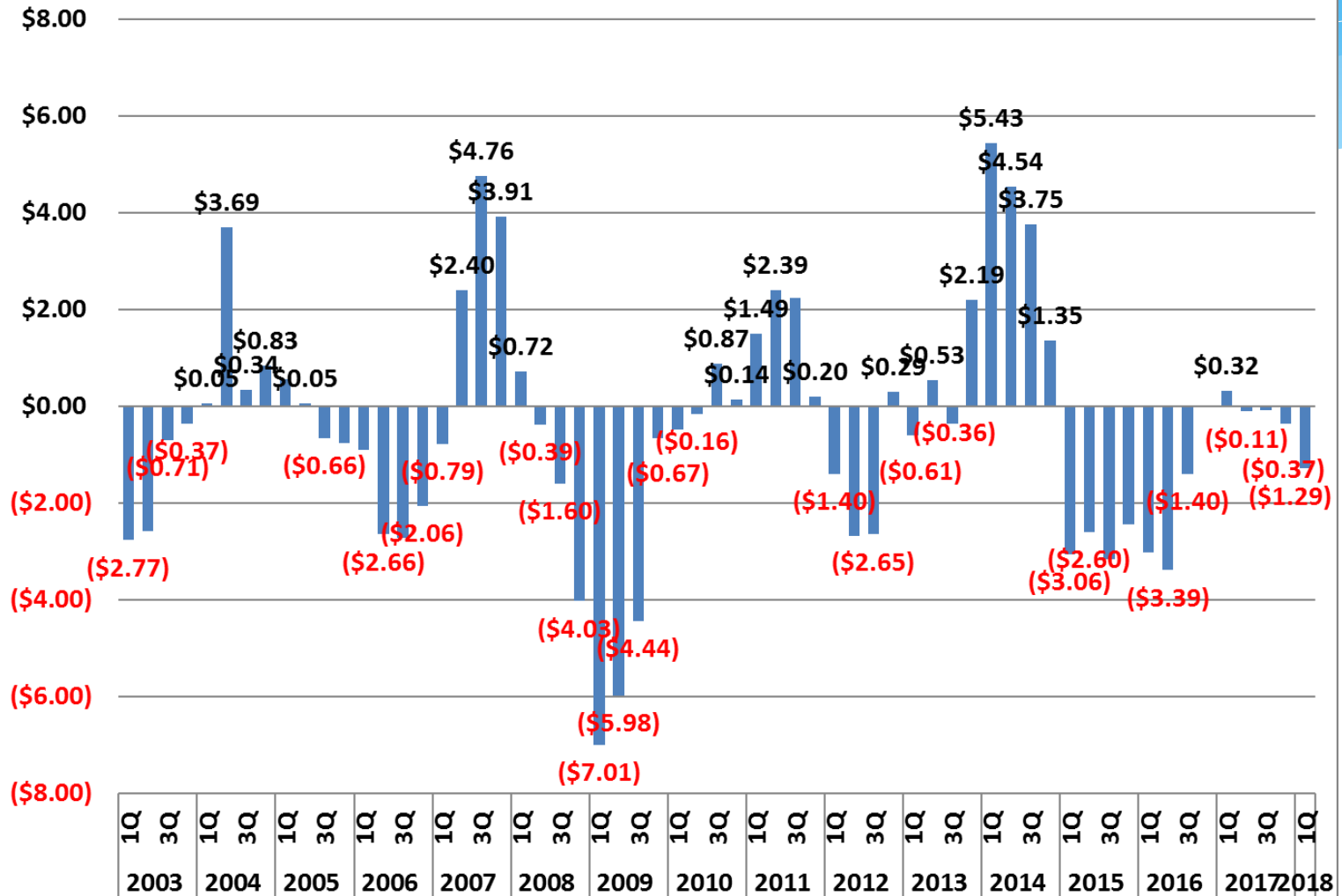
# Cow Numbers

## California Cow Numbers

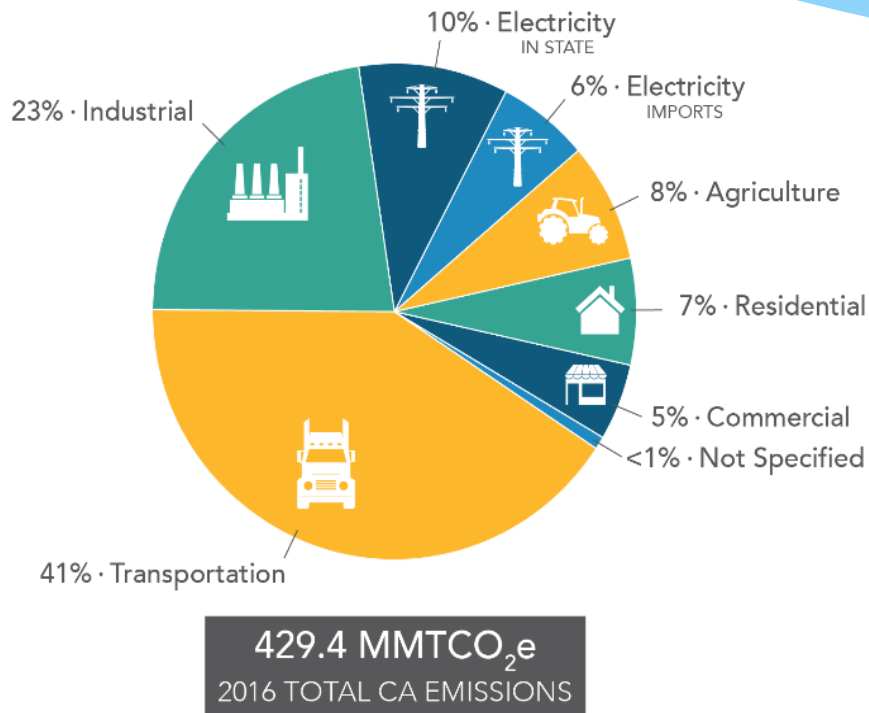


# Economics

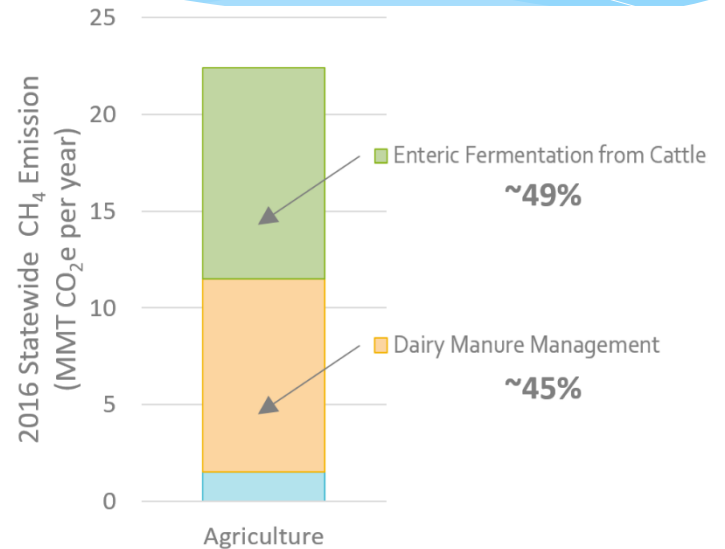
## Revenue minus cost of production



# GHG Emissions



Breakdown of GHG emissions in California (California's 2016 Statewide GHG Emission Inventory, 2018 Edition).



Breakdown of CH<sub>4</sub> emission from the agricultural sector using California's 2016 Statewide GHG Emission Inventory (2018 Edition).

# Where we've been.

- \* Resources to produce milk 1944 to 2007
  - \* 21% of the animals
  - \* 23% of the feedstuffs
  - \* 35% of the water
  - \* 10% of the land
- \* Carbon footprint of a glass of milk in 2007 was 37% of what is was in 1944

\* Capper, Jude & Cady, Roger & Bauman, D.E.. (2009). The environmental impact of dairy production: 1944 compared with 2007. *Journal of animal science*. 87. 2160-7. [10.2527/jas.2009-1781](https://doi.org/10.2527/jas.2009-1781).



# Where are we going?

- \* Topic for discussion
- \* Significant interest in digesters and alternatives with commensurate methane reductions
- \* SB 1383 calls for a 40% reduction in manure methane emissions by 2030
- \* Goal will require coordinated effort by industry, researchers and the State
- \* Continued incentives and addressing barriers

# Questions?

